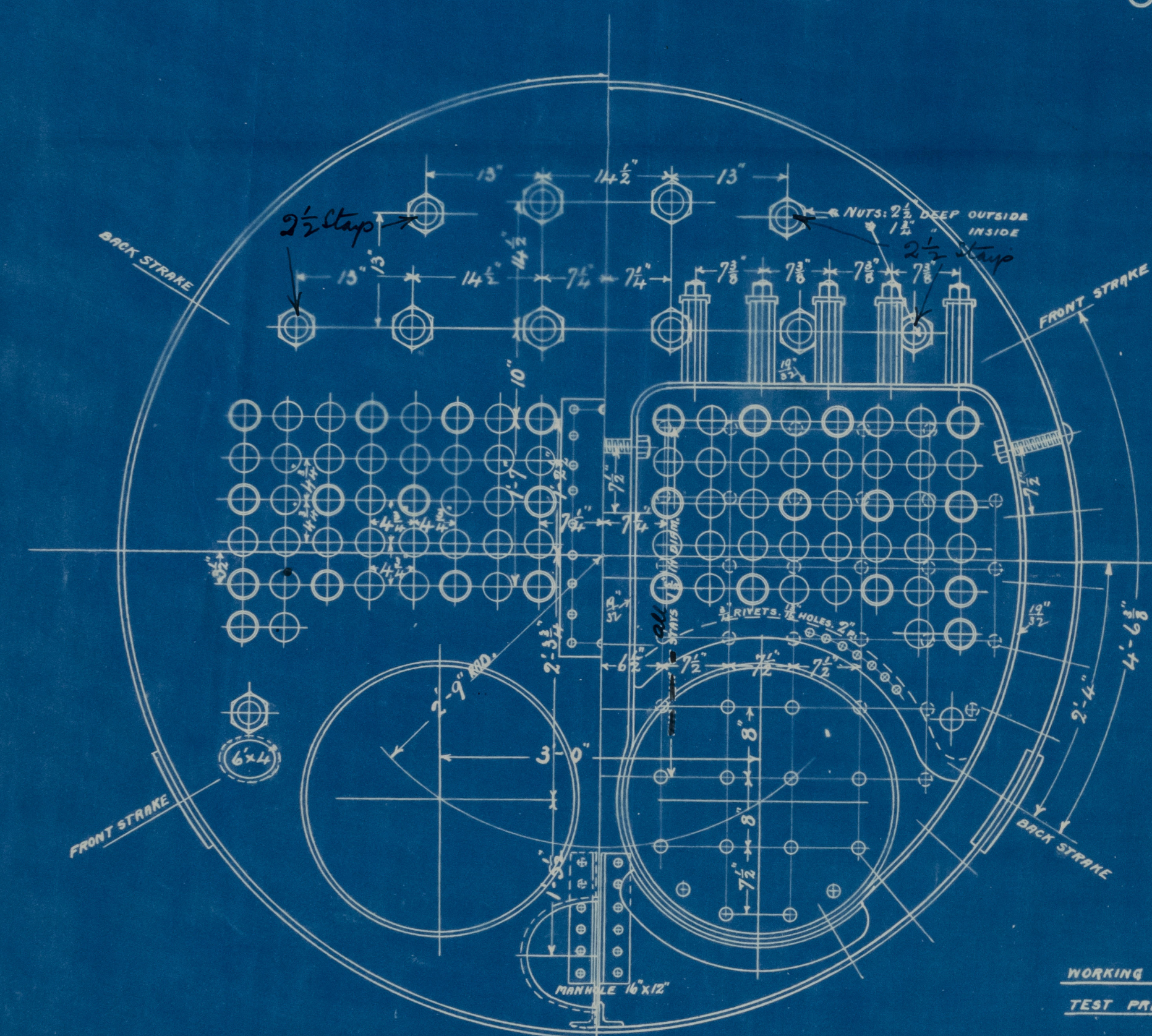
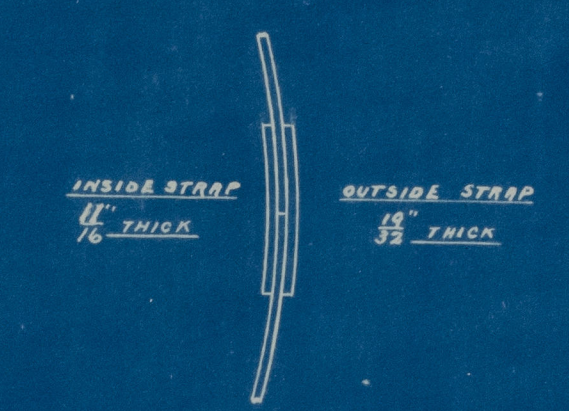
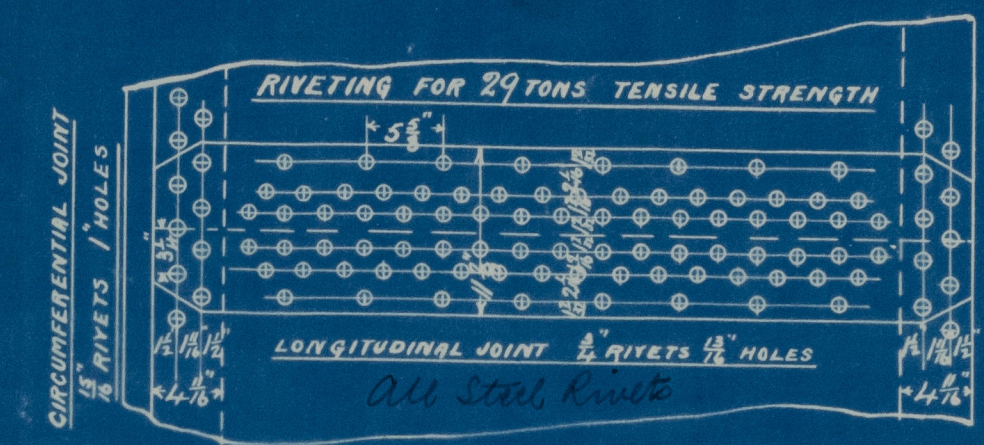
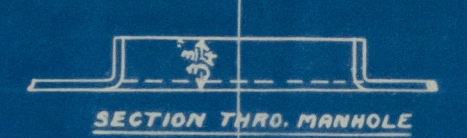


10: 6: 98

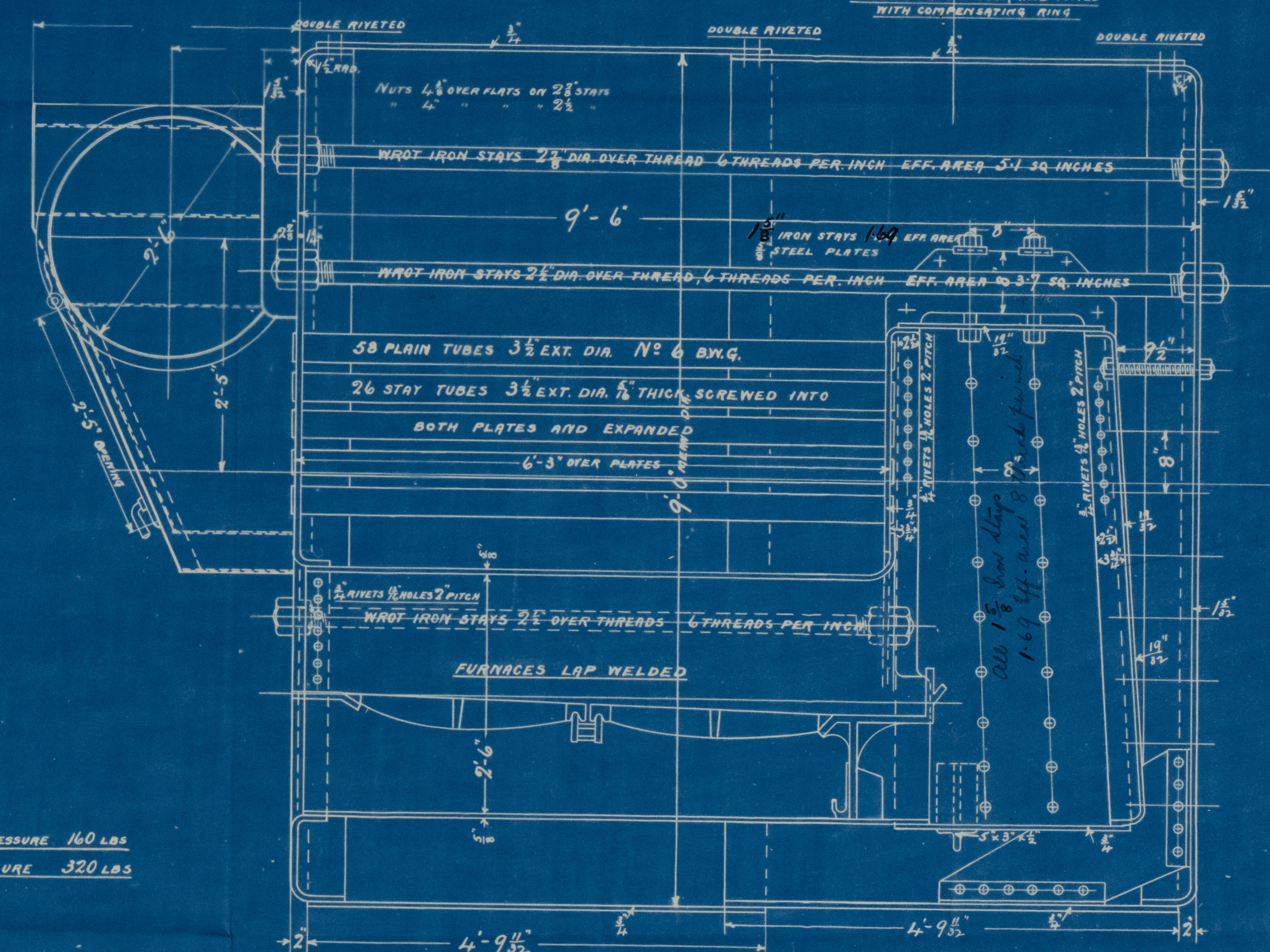
PERCENTAGES			
	BOARD OF TRADE	LLOYDS	
LONGITUDINAL JOINT	PLATE SECTION 85.5%	85.5%	ALL HOLES
	RIVET " 88.3%	91%	DRILLED
CIRCUMFERENTIAL JOINT	PLATE " 69.2%	69.2%	IN PLACE
	RIVET " 78%	81.6%	



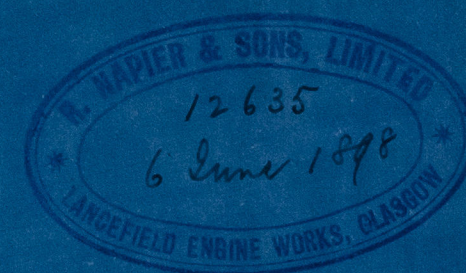
WORKING PRESSURE 160 LBS
TEST PRESSURE 320 LBS



HEATING SURFACE	
TUBES	484.44 SQ. FT.
FURNACES	50.73 "
BACK TUBE PLATE	16.32 "
BACK COMB. CHAMBER	28.00 "
TOP "	15.90 "
SIDES "	40.60 "
TOTAL	635.95 "



TENSILE STRENGTH OF SHELL & STRAPS 29-32 TONS
" " " OTHER PARTS 26-30 "

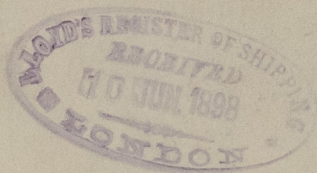


22m
10/6/98

DONKEY BOILER
S.S. AUSTRALASIAN
SCALE 1"=1'-0"

GL5269-0111

R. Kaper Hons
Sentry Boiler
for
S. S. "Australasian"
J. R. P.
No. 16402



GLS269-011



© 2021
Lloyd's Register
Foundation