

Received 11/1/98 Jm
Contract hereby agreed to 10 Dec. 97.

4.1.98
4.3.98
10.3.98

Messrs John Fullerton & Co

Midship Section of S. S. No 142.

To Class 100 A 1 and to be built under special survey
Scale 1/2 Inch = one Foot

S.S. May

See amended section.
arrow

Equipment No 5545

- ✓ 2 Bower Anchors @ 5 3/4 cwt. ex stock
- ✓ 1 Stream " 1 1/2 " " "
- ✓ 1 Hedge " 3/4 " " "
- ✓ 165 fathoms 7/16 stud chain cable weight as per rule 64.1.11
- ✓ 45 " 2 1/4" steel wire
- ✓ 45 " 6/16 towline
- ✓ 90 " 4" hawser

Length	as per rule	129' 0"
Breadth	" " "	20' 9 1/2" = 6.16 Bin L ✓
Depth	" " "	10' 9 1/2" = 11.82 Din L. ✓
Raised Quarter deck		47' 9" x 3' 6" above main deck
Bridge		7' 0" x 6' 9" " " "
Top Gallant Forecastle		23' 0" x 6' 9" " " "

Riveting. Keel, Stem & Sternpost, lap butts of stringer plate, lap butts of shell before and abaft half length, landings to turn of bilge and lower edge of sheerstrake, all double riveted. Lap butts of shell treble riveted for half length amidships.

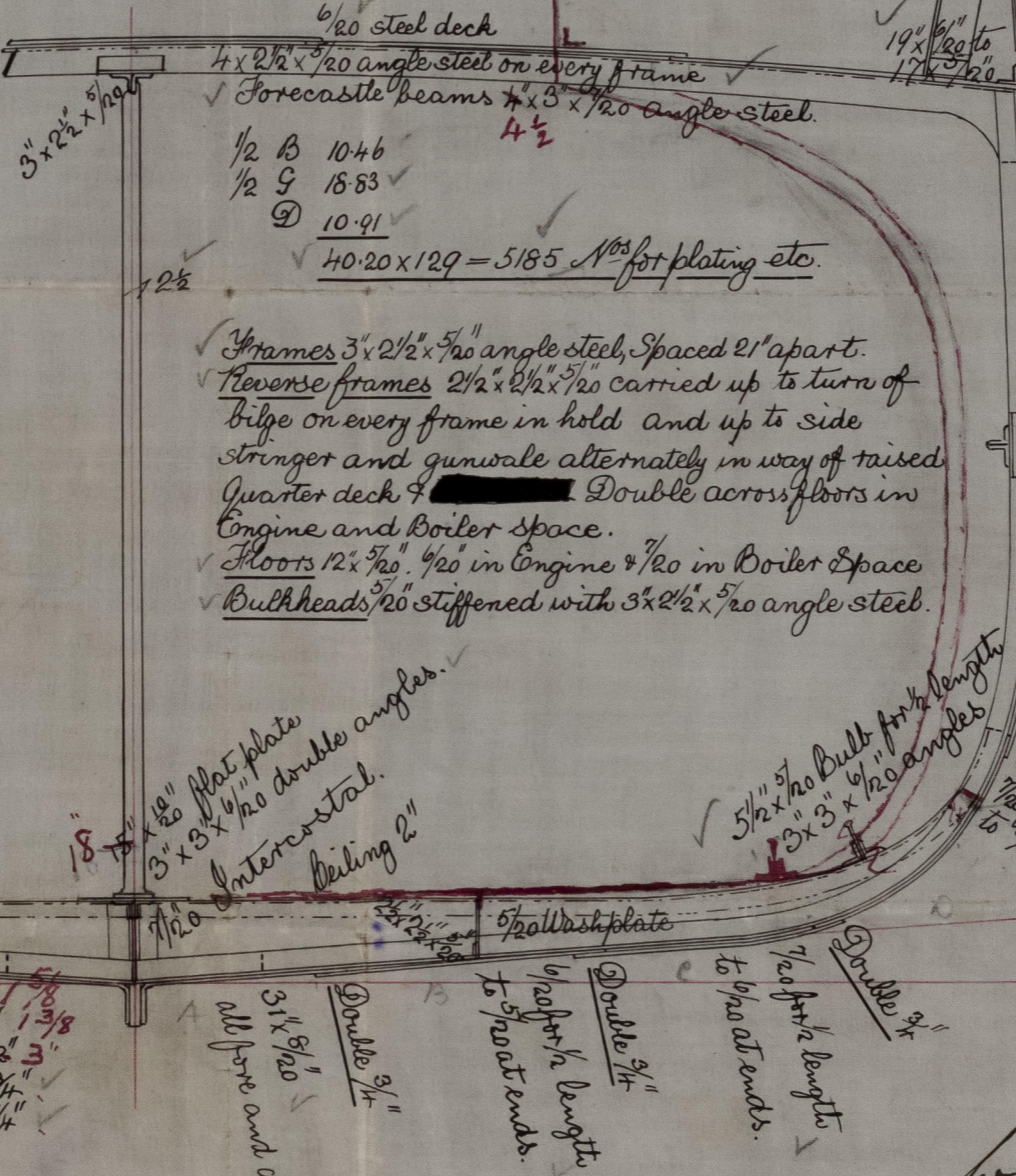
Side Stringer

in way of raised quarter deck
12" 7/16 plate & 3" 3/4 x 7/16 angles.

Brackets to
surround
substructure

Keel 6" x 7 1/2" 1 5/8
Stem 6" x 14" 1 3/8
Sternpost 6" x 2 1/2" 3
Rudder head 3 3/4
" heel 2 1/4

Double 3/4"
to 5/16 at ends.
Double 3/4"
to 5/16 at ends.
Double 3/4"
to 5/16 at ends.



Bulwarks 5/16
Quarter deck sides 7/16
to 5/16 and 7/16 at break
Top Gall Forecastle 5/16

Single 3/4"
3 x 3 x 7/16 angle steel ✓
31' x 7/16 for 3/4" length to 7/16
at ends doubled with 7/16
plates 1/2" long at break. as per profile
Double 1/4"

3 x 2 1/2 x 7/16 angle steel
3 x 5/8" rope iron
6" x 6" American Elm.

7/16 for 1/2 length
to 7/16 at ends
3 x 3 x 7/16 angle steel

Single 3/4"
7/16 for 1/2 length
to 7/16 at ends.

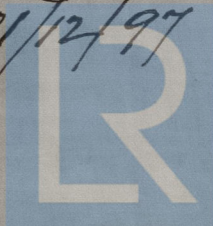
Single 3/4"

7/16 for 1/2 length
to 7/16 at ends



WAL
Gls 31/12/97

47.6
4/1/98



J. Fullerton & Co.

N^o 142

Midship Auction.

S.S. "May".

Gls 16324

GLS269-0053

20/1/10
J.C.



© 2021

Lloyd's Register
Foundation