

"Angelo" - Glasgow Report No.
"Buffalo" - " " "

MIDSHIP SECTION
OF
STEEL SCREW STEAMERS, N^{os} 79-80
TO CLASS A COASTING RIVER & CANAL PURPOSES
— SCALE $\frac{1}{2}$ " = 1 FOOT —

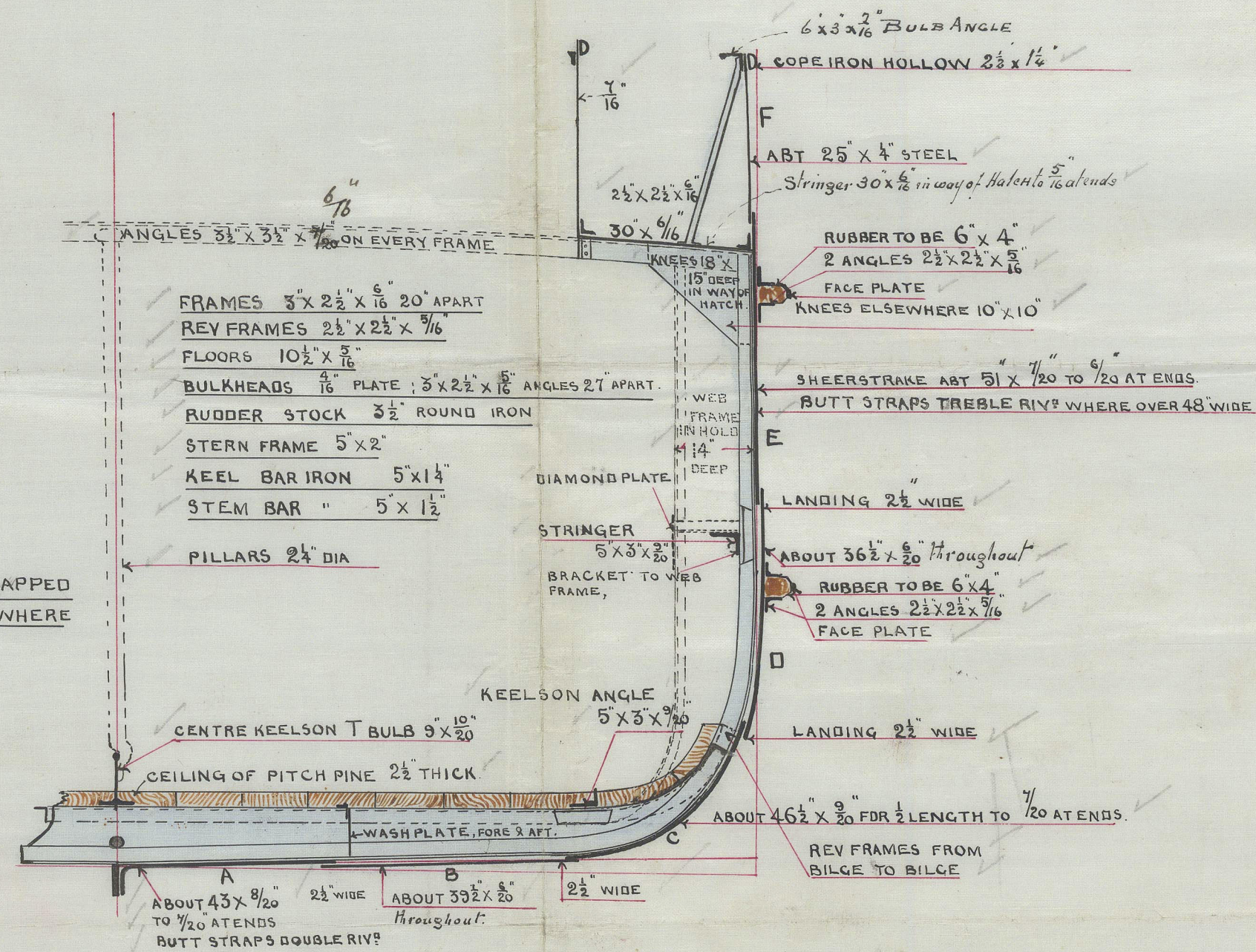
As built
SES
J. Thomson
15.1.94

DIMENSIONS

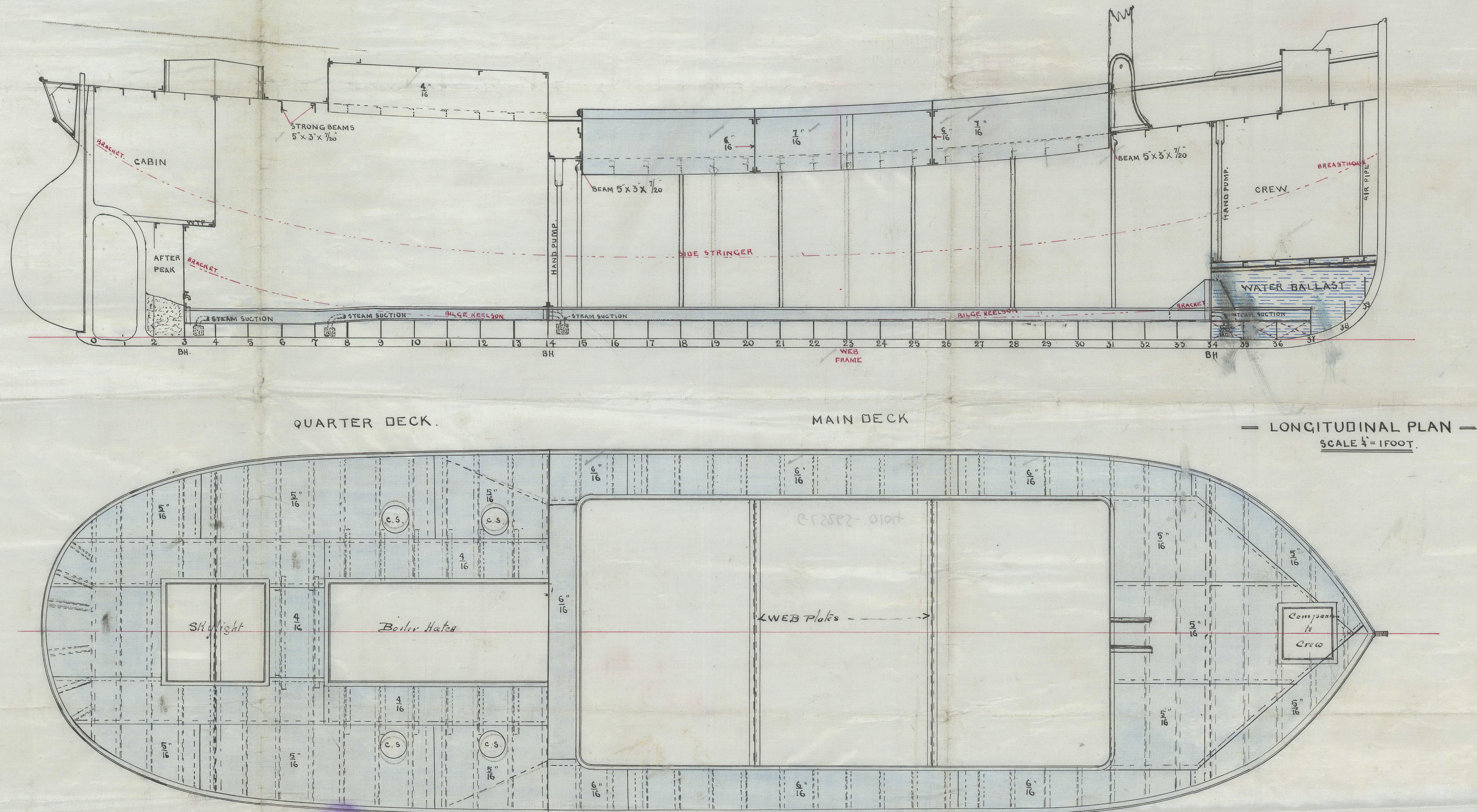
| | |
|------------------------|-------|
| HALF MOULEBBO BREADTH | 8.0 |
| DEPTH FROM TOP OF KEEL | 8.91 |
| HALF MIDSHIP GIRTH | 16.3 |
| LENGTH AS PER RULE | 64.67 |

NUMERALS

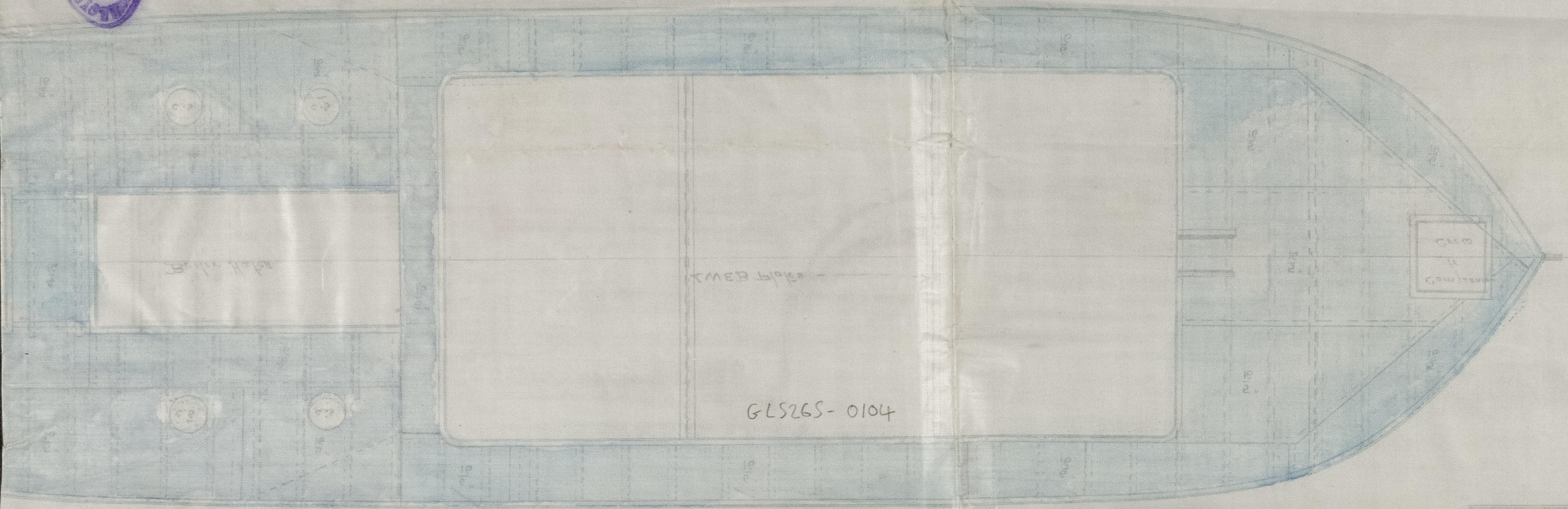
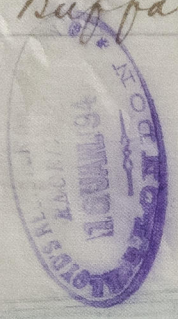
| | |
|--|-------------|
| $9 \cdot 0'' + 8 \cdot 9'' + 16 \cdot 3'' = 34 \cdot 2$ | THWARTSHIPS |
| $9 \cdot 0'' + 8 \cdot 9 + 16 \cdot 3 \times 64 \cdot 67 = 2211 \cdot 7$ | LONGIT |



NOTE-ALL SHELL BUTTS TO BE LAPPED
AND DOUBLE RIVET, EXCEPT WHERE
SHOWN.



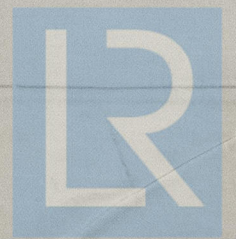
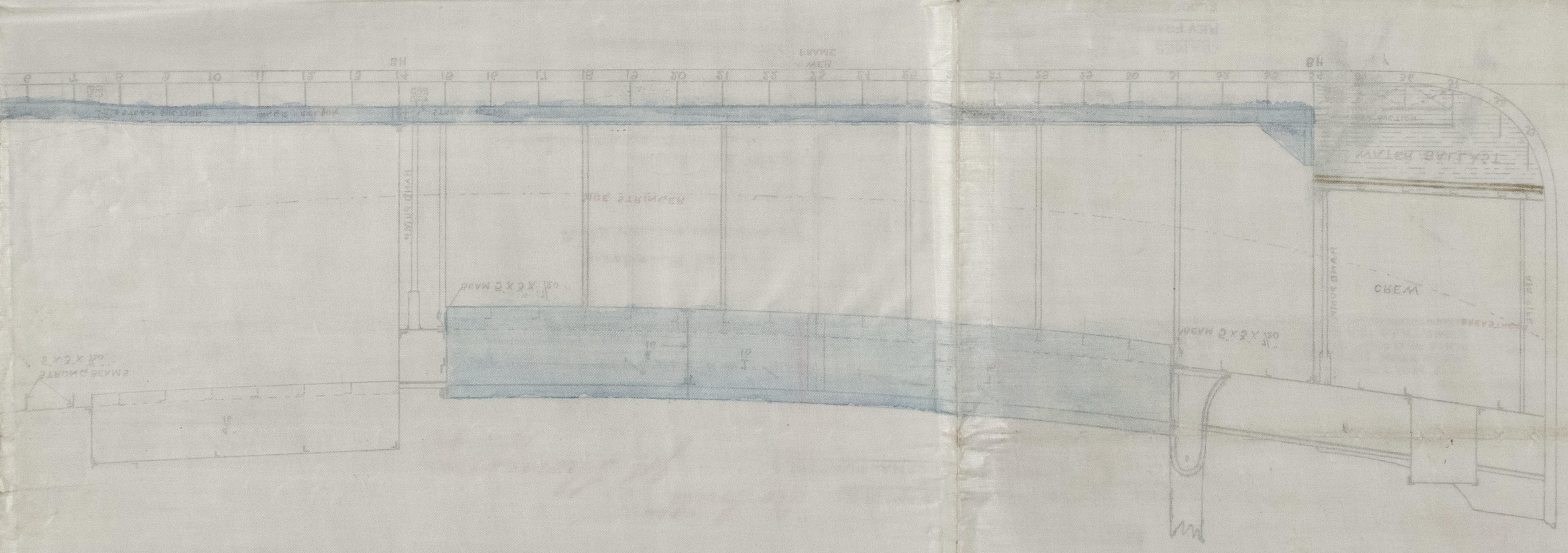
"Angelo" - Glasgow Report No 12684.
 "Buffalo" - " " " 12688.



QUARTER DECK

MAIN DECK

SCALE 1" = 1000' — LONGITUDINAL PLAN —



© 2021
 Lloyd's Register
 Foundation