

5.9.43

6. 10. 93

6.11.93

Equipment as per Rules

EQUIPMENT 62-2344

1 ANCHOR 5 cwt (INCLUDING STOCK)

1 " 2 av

75 FATHOMS  $\frac{7}{8}$ " SHORT LINK CHAIN

~~100 FEET  $\frac{1}{2}$ " TESTED CHAIN (FOR WINCH)~~

~~60 FATHOMS 5½" MANILLA~~

20 " HEADING LINE

MIDSHIP  
SECTION.

SCALE  $\frac{3}{4}'' = 1 \text{ FT.}$

Note. ALL SHELL BUTTS TO BE LAPPED  
AND <sup>double</sup> SINGLE RIVETED.

### DIMENSIONS

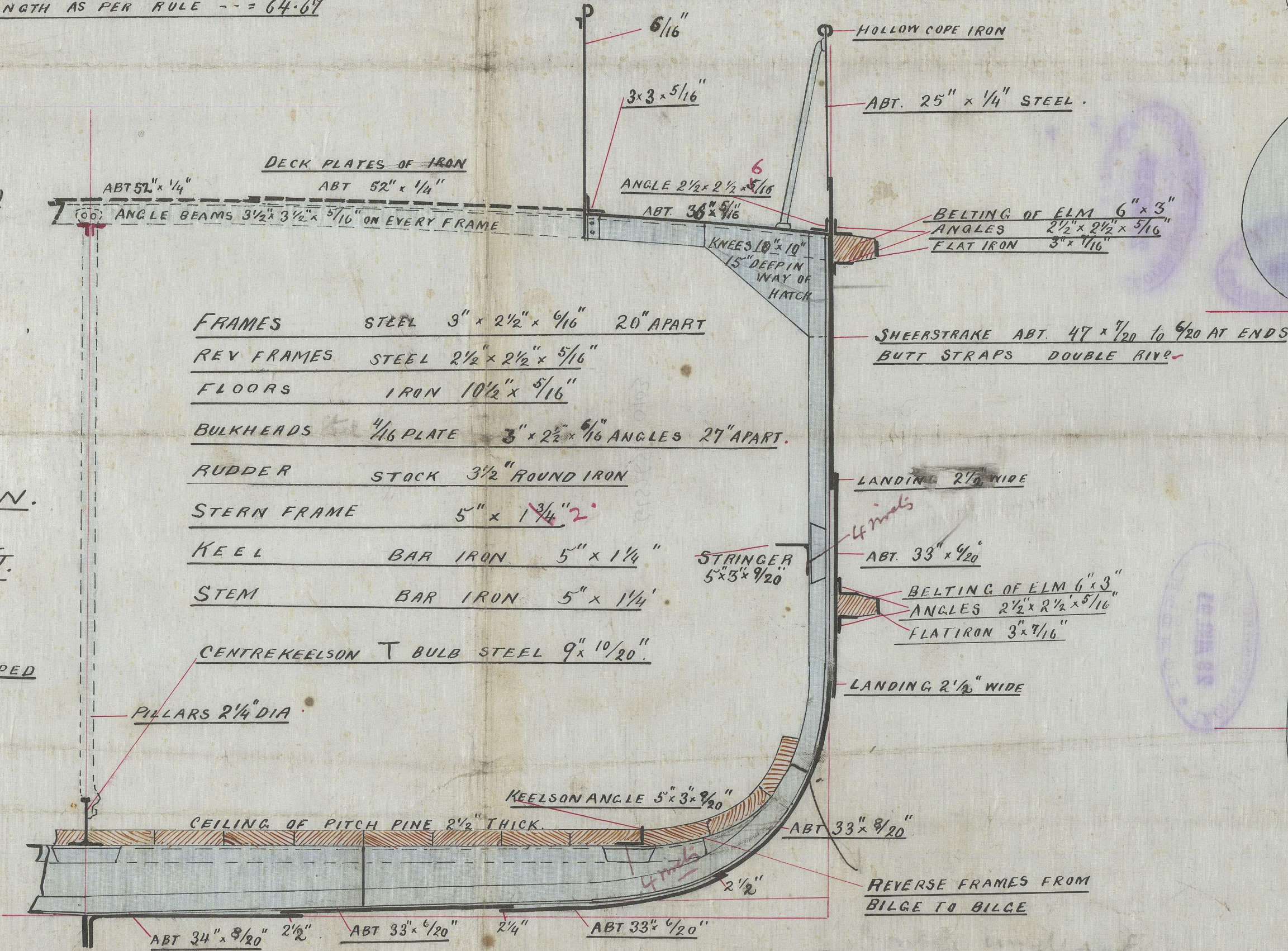
HALF MOULDED BREADTH --- = 9.0

DEPTH FROM TOP OF KEEL - = 8.91

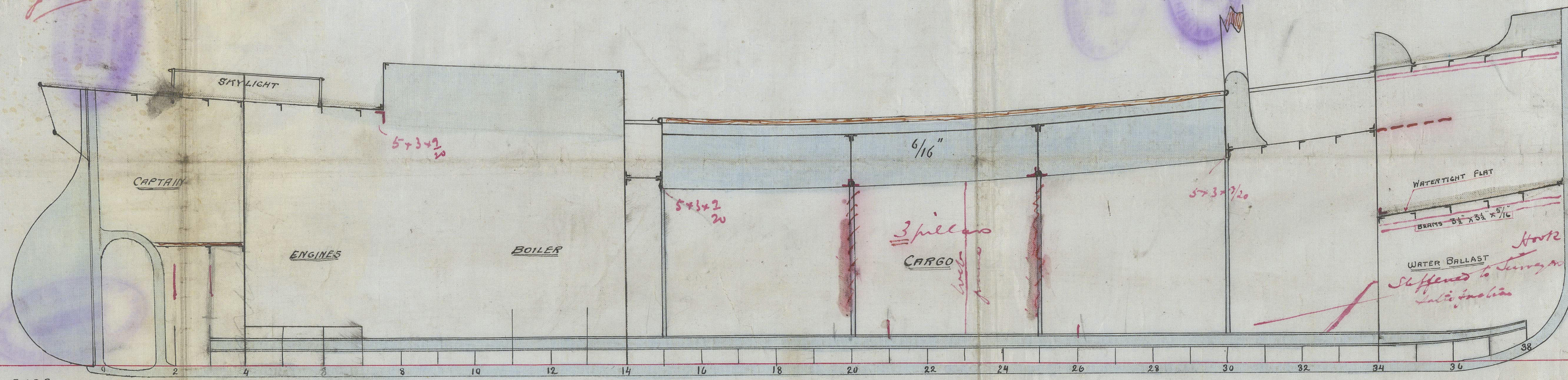
LENGTH AS PER RULE -- = 64.6'

---

## NUMERALS

$$9.0 + 8.9 + 16.3 = 34.2 \text{ THWARTSHIPS}$$
$$(9.2 + 8.3 + 16.3) \times 64.67 = 2211.7 \text{ LONGIT.}$$


See amended tracing  
J. P.

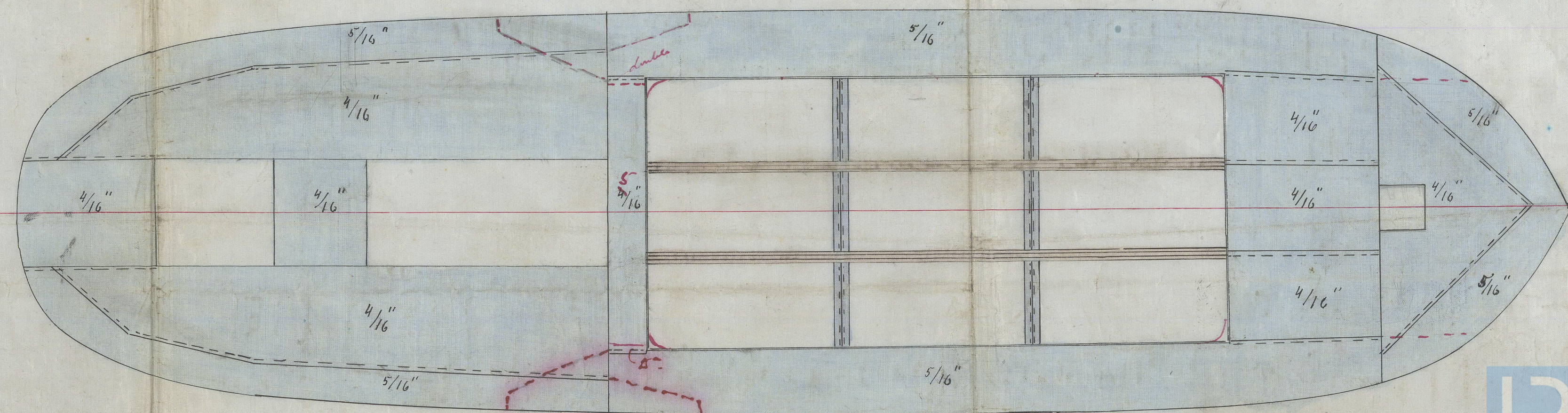


PROPOSED STEEL SCREW STEAMER.

TO CLASS A COASTING RIVER AND CANAL PURPOSES.

SCALE  $\frac{1}{4}" = 1 \text{ FT.}$

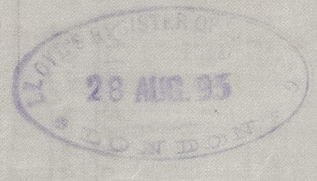
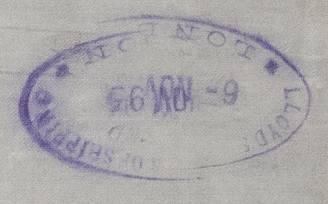
No 79 & 80







08295280



SHIP'S CHARTER  
HARTFORD LONDON

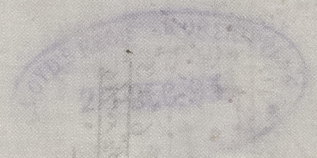
CHARTERED BY  
HARTFORD LONDON

SHIP'S CHARTER  
HARTFORD LONDON

SHIP'S CHARTER  
HARTFORD LONDON

SHIP'S CHARTER  
HARTFORD LONDON

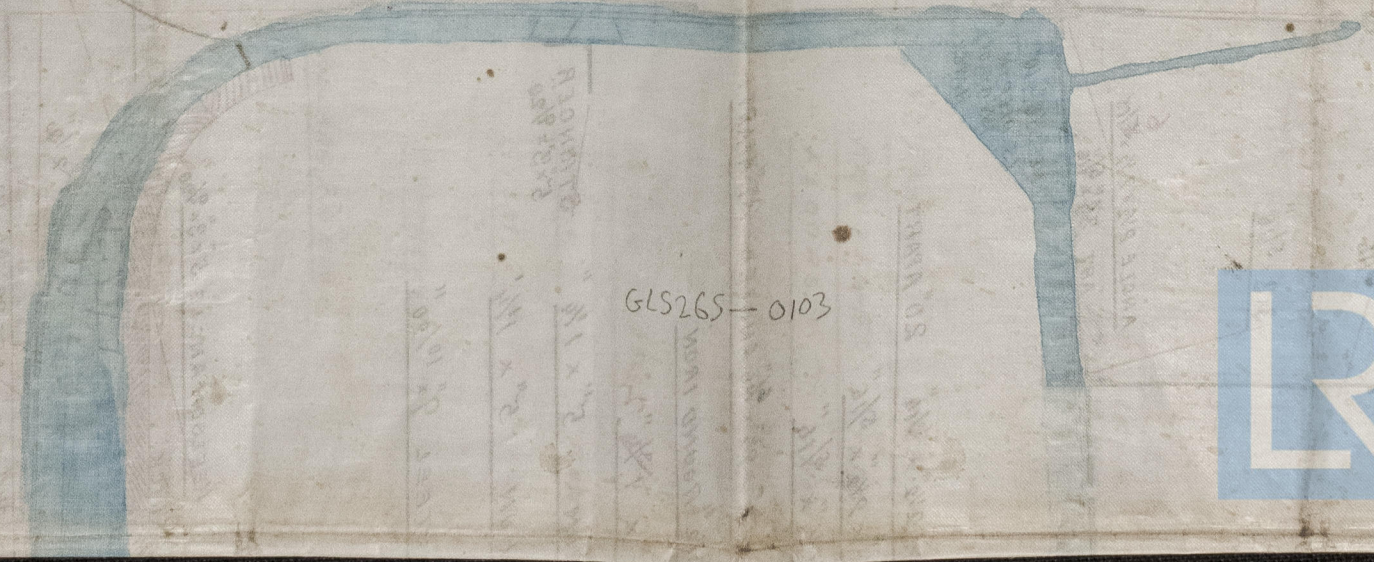
SHIP'S CHARTER  
HARTFORD LONDON



SHIP'S CHARTER  
HARTFORD LONDON

SHIP'S CHARTER  
HARTFORD LONDON

SHIP'S CHARTER  
HARTFORD LONDON



GLS265-0103



© 2021  
Lloyd's Register  
Foundation