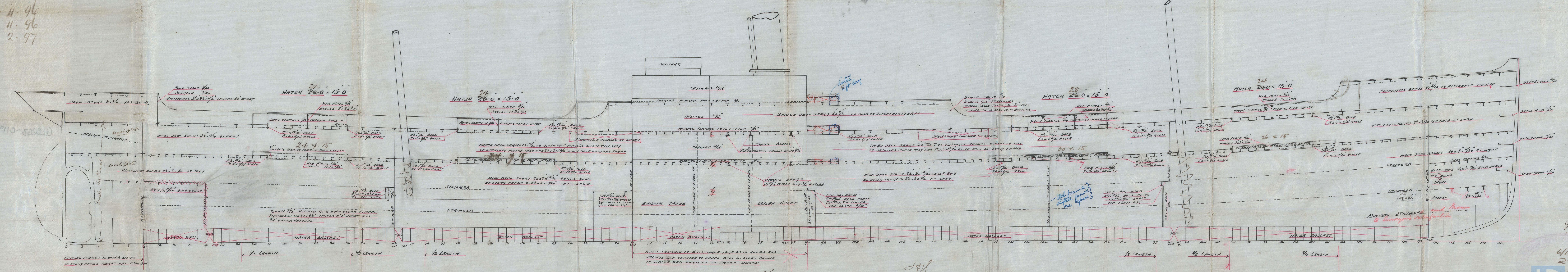


12. 11. 96  
 23. 11. 96  
 2. 2. 97  
 0 p.m.  
 110-50210

S.S. No. 290  
 Longitudinal Section  
 Dimensions 370 x 48.0 x 27.6 to Upper Deck  
 Scale 1/8" = 1 Foot

See amended plan as built

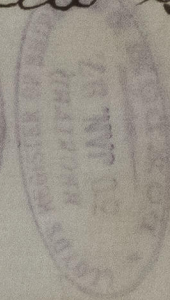
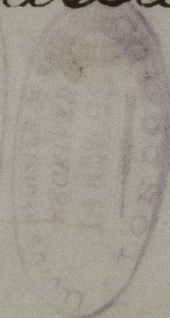
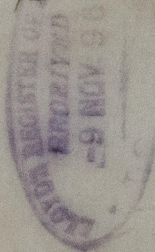


See amended arrangement of  
 strong beams in 8 x 18 space (attached)  
 dated 23/11/96.

6/11/96  
 2908  
 10/2021

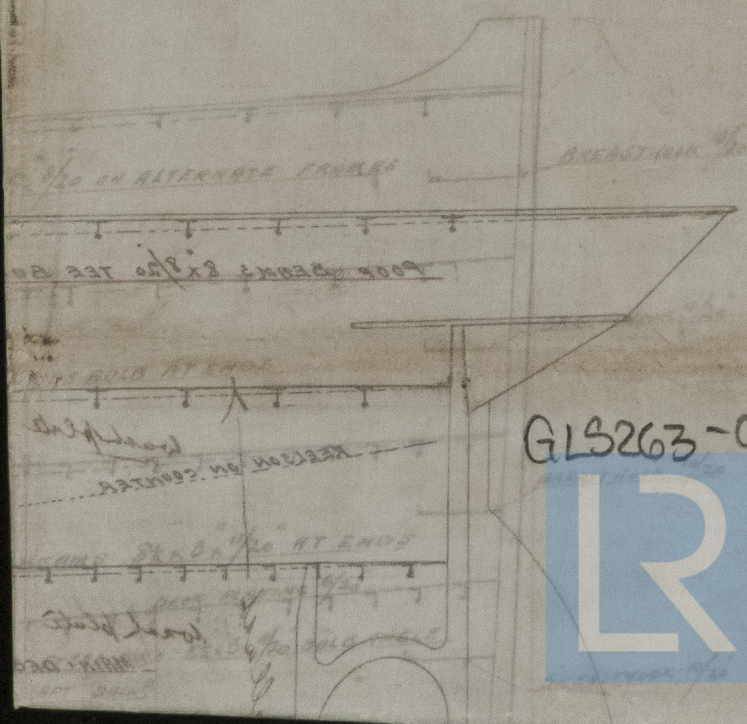


*S. S. "Kassala" Glasgow Report*  
*No. 155341-*



*dp 11.21*  
*dp 11.20*  
*dp 11.20*

*290*



GLS263-0119



© 2021

Lloyd's Register  
 Foundation