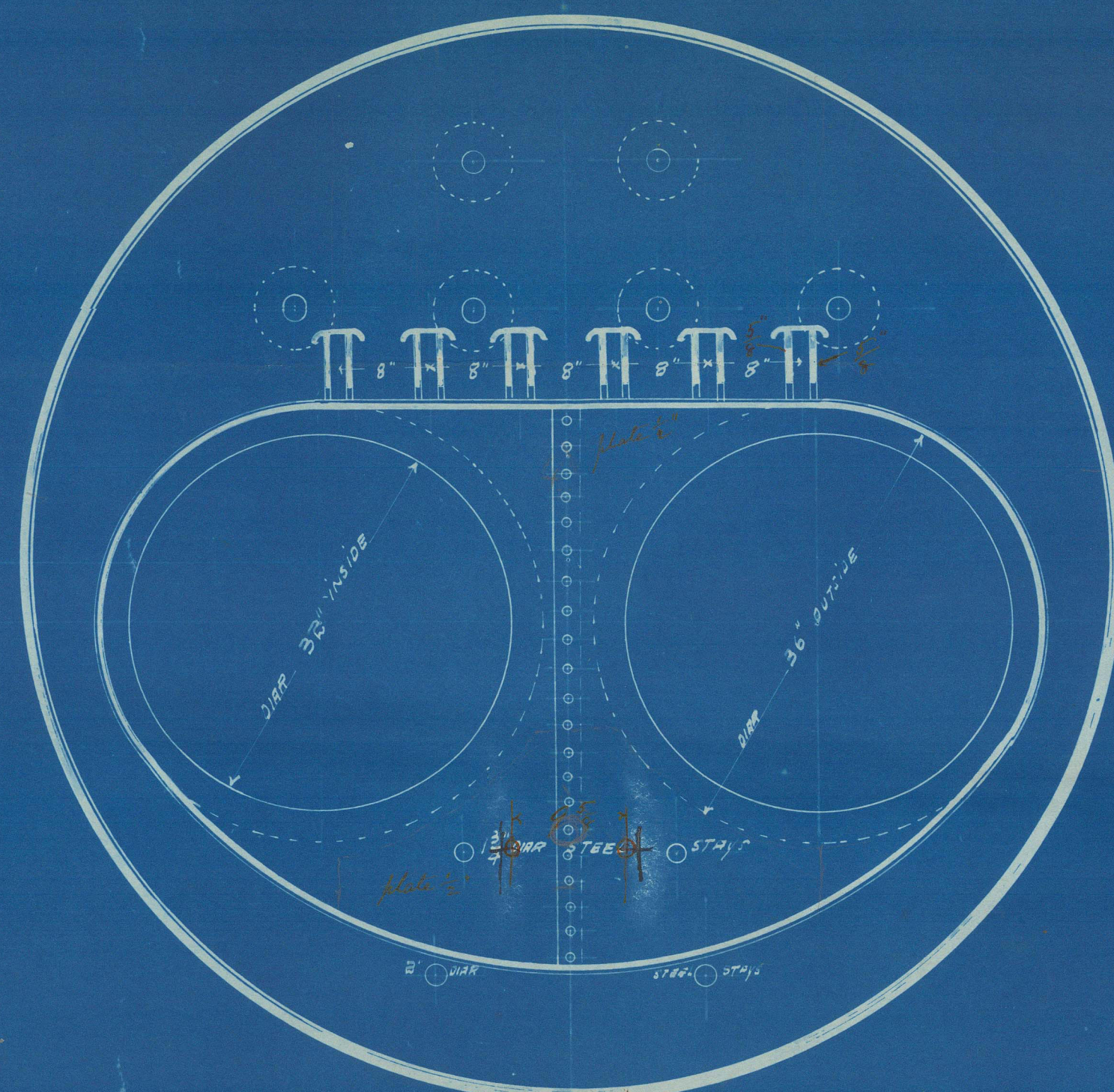
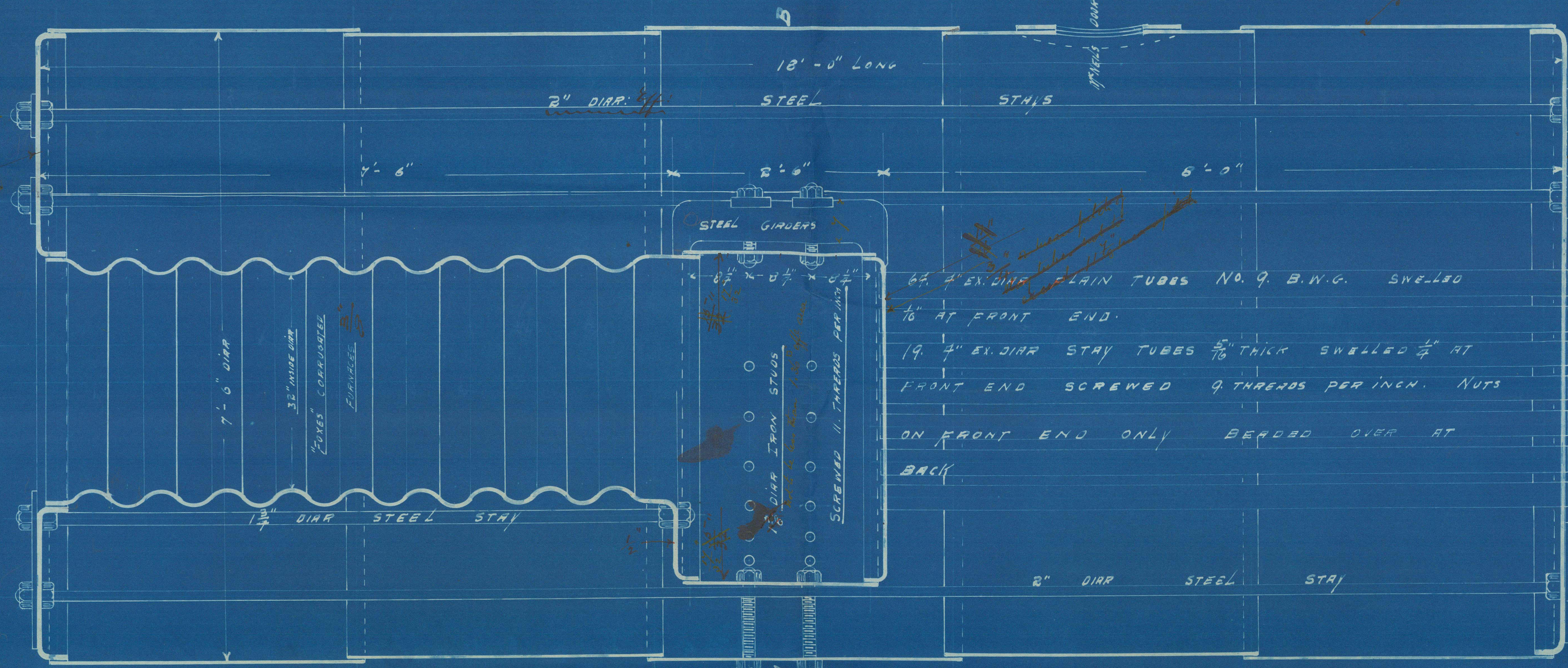


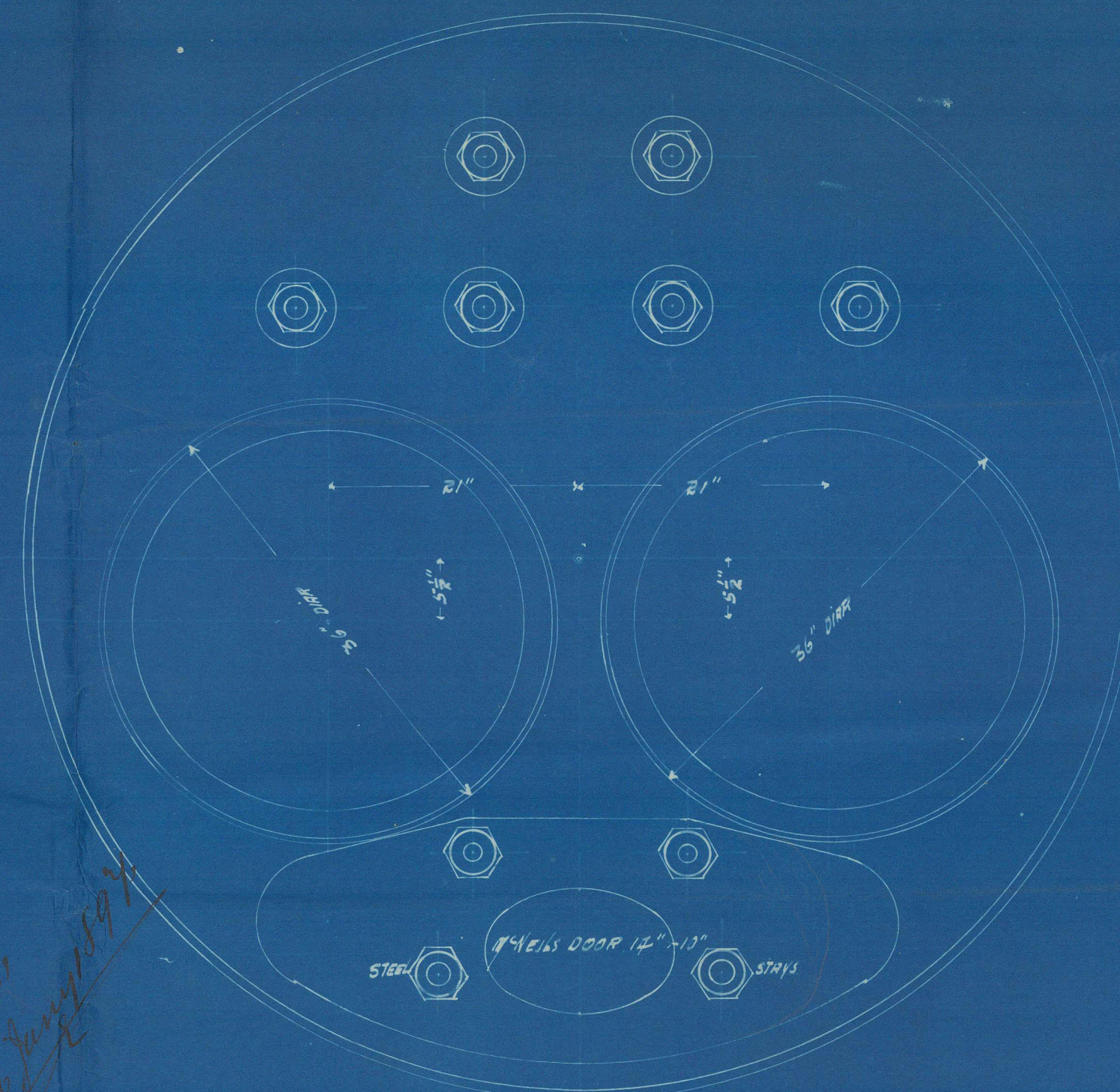
CROSS SECTION ON A.B.
LOOKING ON FRONT



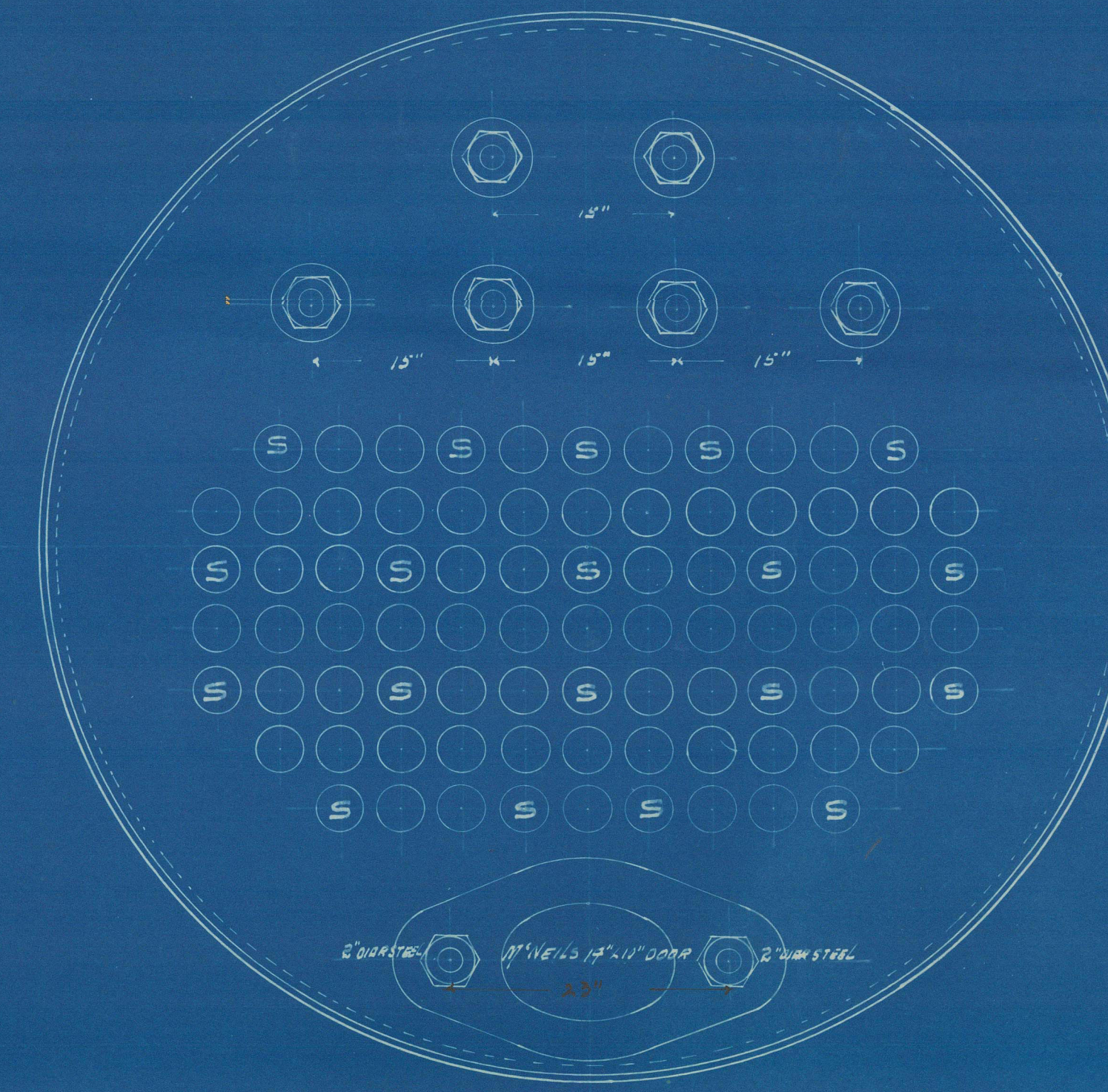
CROSS SECTION ON A.B.
LOOKING ON BACK



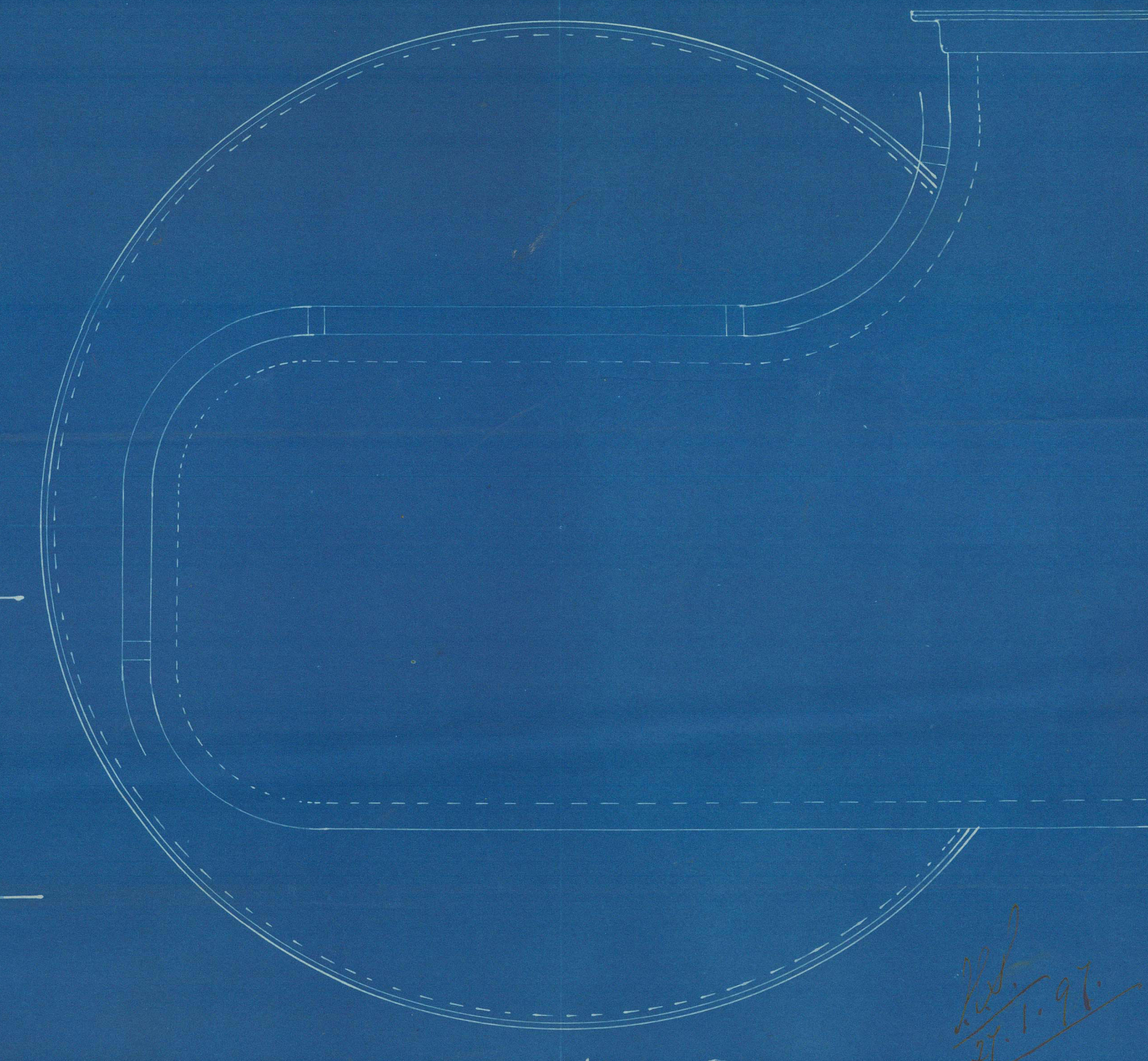
LONGITUDINAL SECTION



FRONT

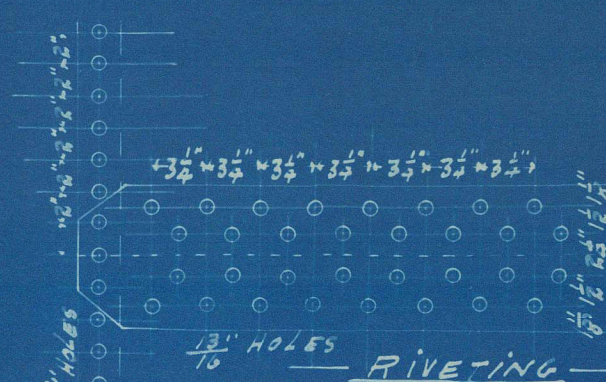


BACK



BACK WITH SMOKEBOX

| HEATING SURFACE | GRATE SURFACE |
|--------------------|-----------------|
| TUBES 645.33 sq ft | 27 sq ft |
| FURNACES 76.25 " | |
| CHAMBER 42.5 " | RATIO G.S. = 1. |
| TUBEPLATE 20.5 " | H.S. 30. |
| TOTAL 834.58 " | |



RIVETING
And Sump 1/2 inch

TWO STEEL COMPOUND BOILERS. 18'-0" LONG. x 7'-6" DIAM.

FOR

120 LBS. WORKING PRESSURE.

TO

"B.O.T." AND "LLOYDS" SURVEY. SCALE. 1" = 1. FOOT.

NO. 100/97

Boilers for Messrs
Kirkie & Partners
No 108-9.
Made by A Nicholson & Co
for
Messrs Shearer & Co No 524.

120 lbs working pressure

524 }
525 }



© 2021

Lloyd's Register
Foundation

J. S. Chelucto - Report - No 15424

465262-0122

225
24575

$$\frac{325 - 8725}{525} \times 100 = 75$$

$$\frac{52 \times 2 \times 1.75 \times 85}{325 \times 595} = 80$$

$$\frac{20 \times 75 (9.5 \times 1)}{90} = 125 \text{ lb}$$

cc

cc Stay

cc Corners

cc Find in

Remains

the top

cc Stay

Tub plate

Stay tubes



© 2021

Lloyd's Register
Foundation