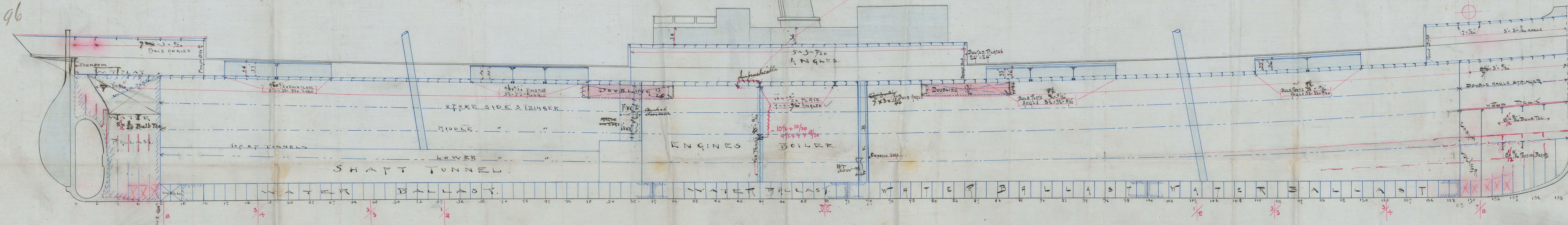


20035
No 4-5 4

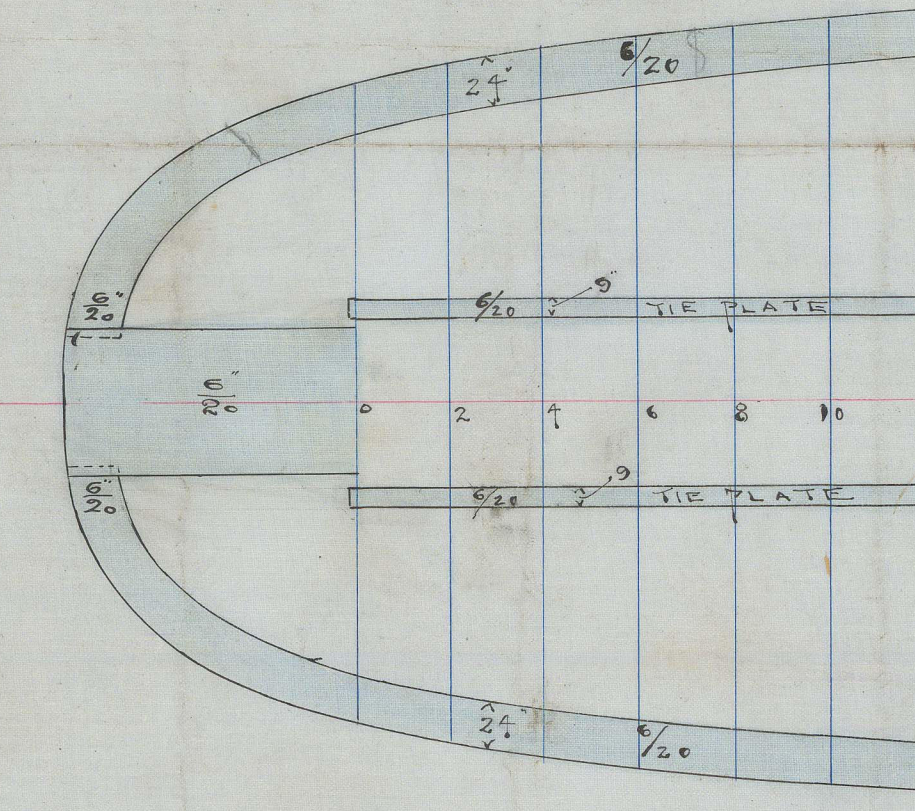
— ARRANGEMENT OF BULKHEADS, BEAMS, AND ETC. —
— BUILDERS DIMENSIONS 280'-0" X 40'-0" X 21'-6" MOULDED —
Scale $\frac{1}{8}$ " INCH = ONE FOOT.

17.10.96

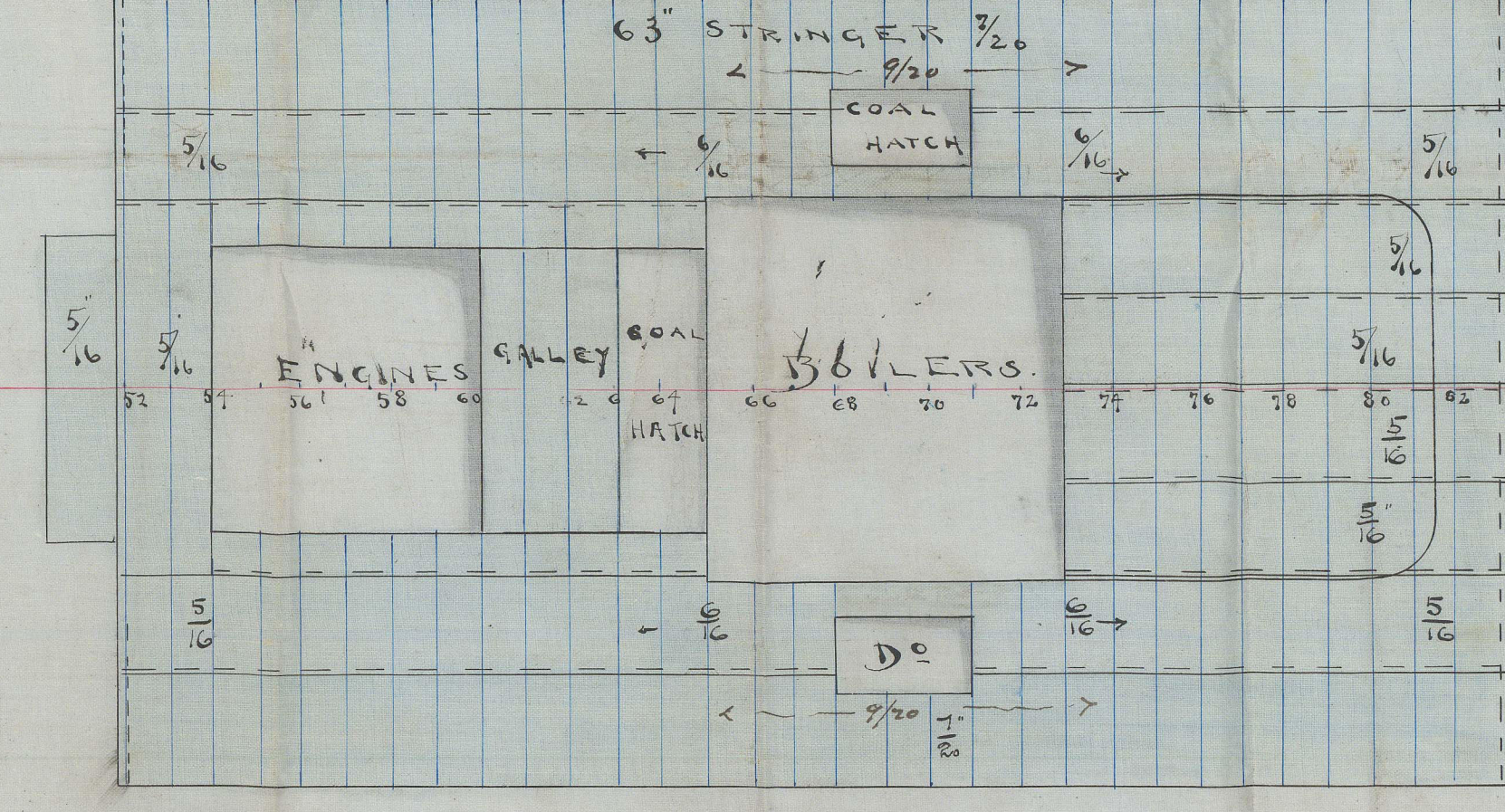
— PROFILE —



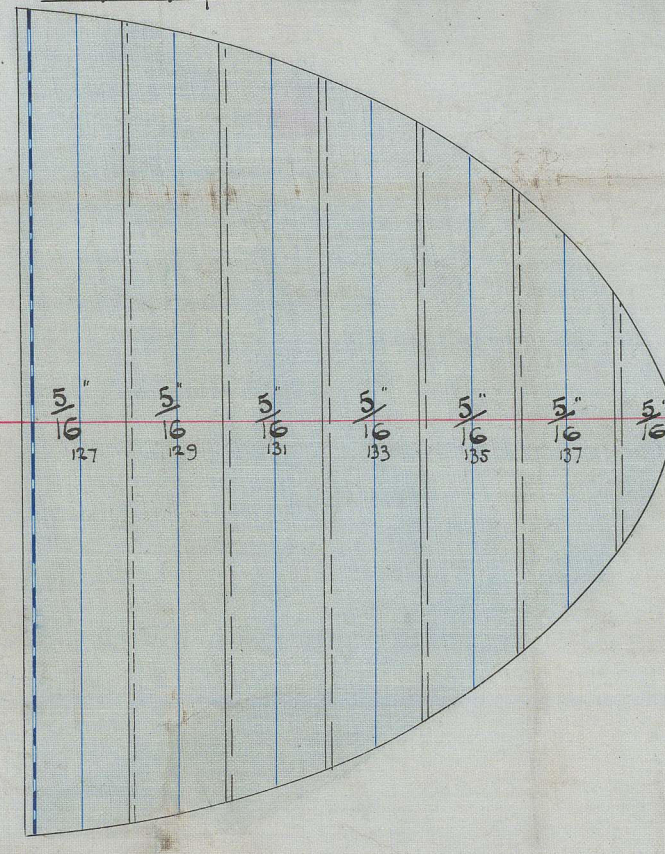
— POOP DECK —



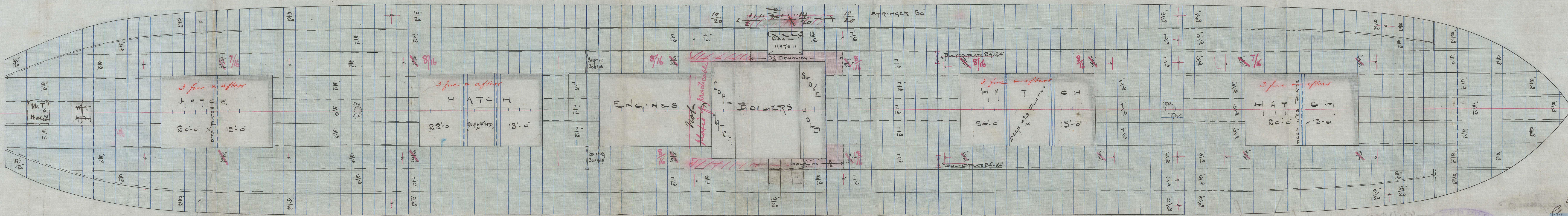
— BRIDGE DECK —



— FORECASTLE DECK —



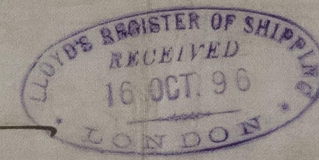
— UPPER DECK —



B. NAPIER & CO. LTD.
SHEPPARD
18/10/96

17/10/96
18/10/96
19/10/96

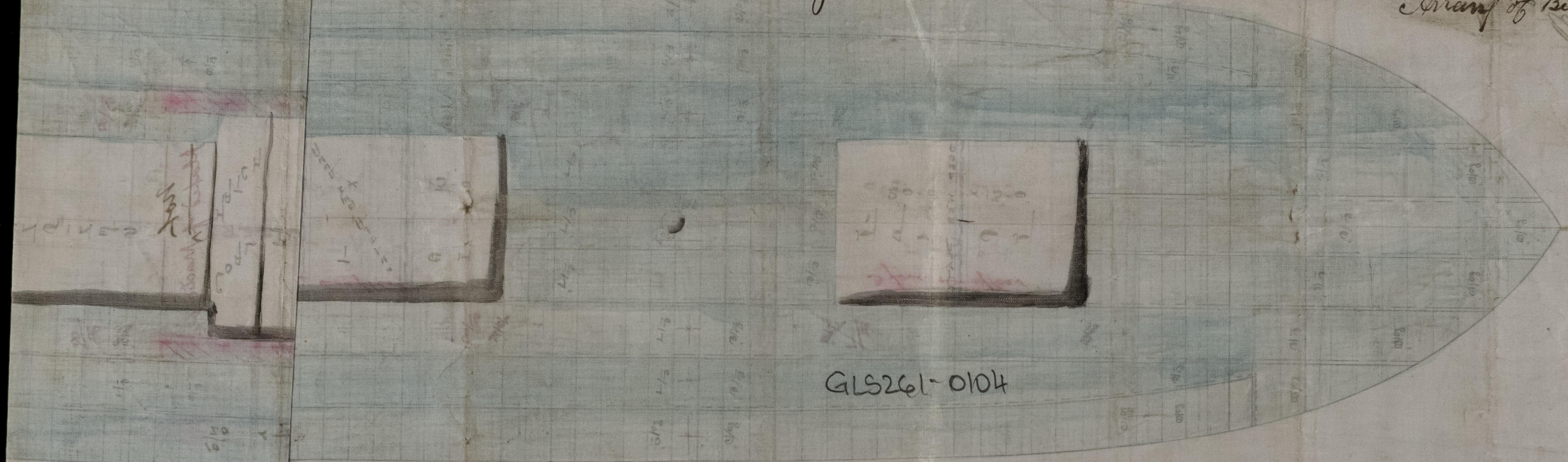
S.S. "Nile" Glasgow Report N° 15265.



2

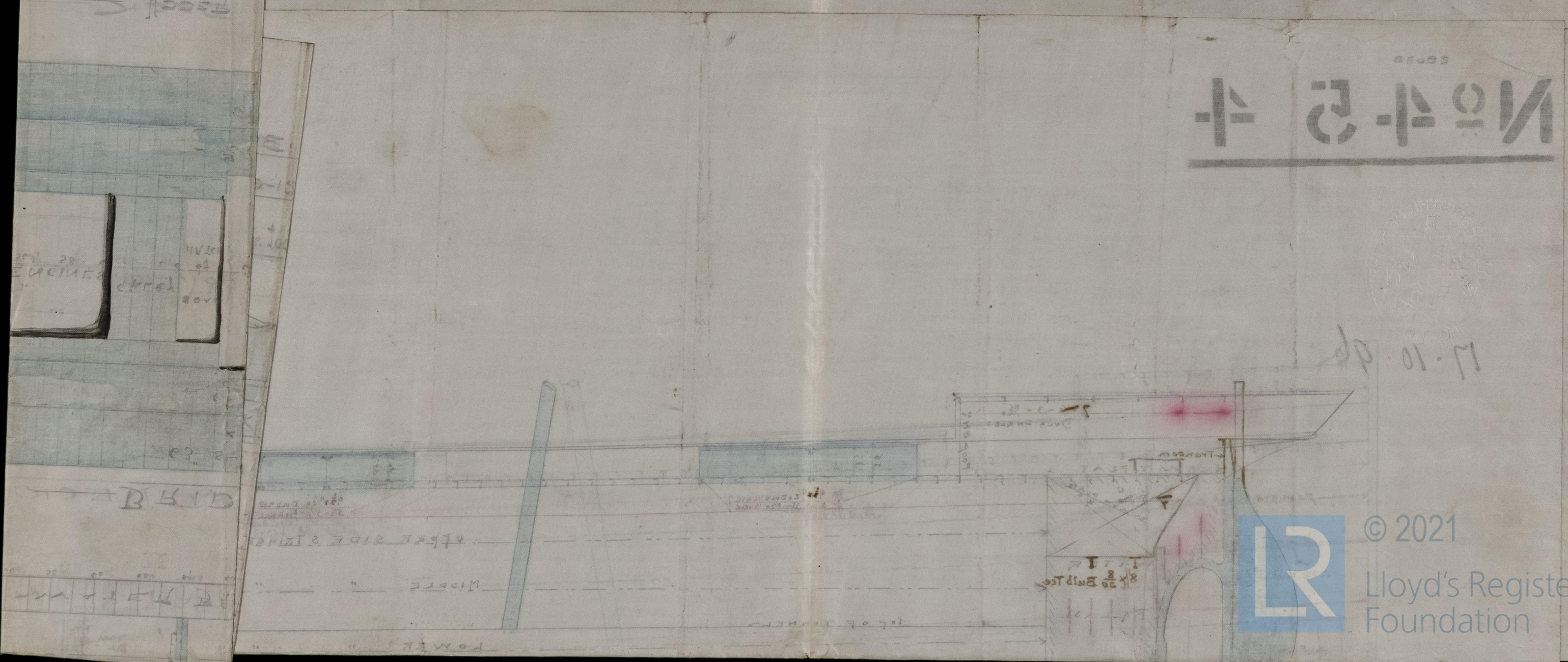
Lloyds

Plan of Bulkheads & Beams etc.



GLS261-0104

Not a



© 2021
Lloyd's Register
Foundation