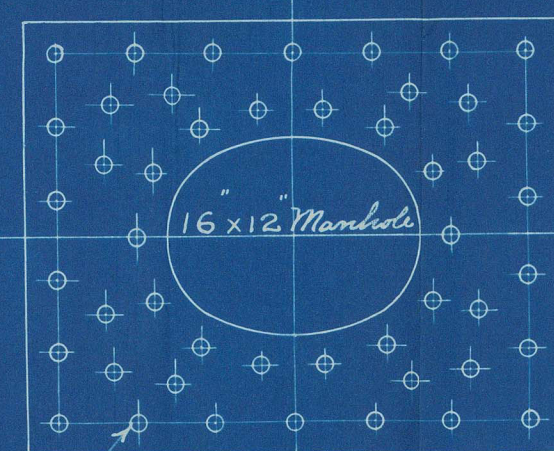


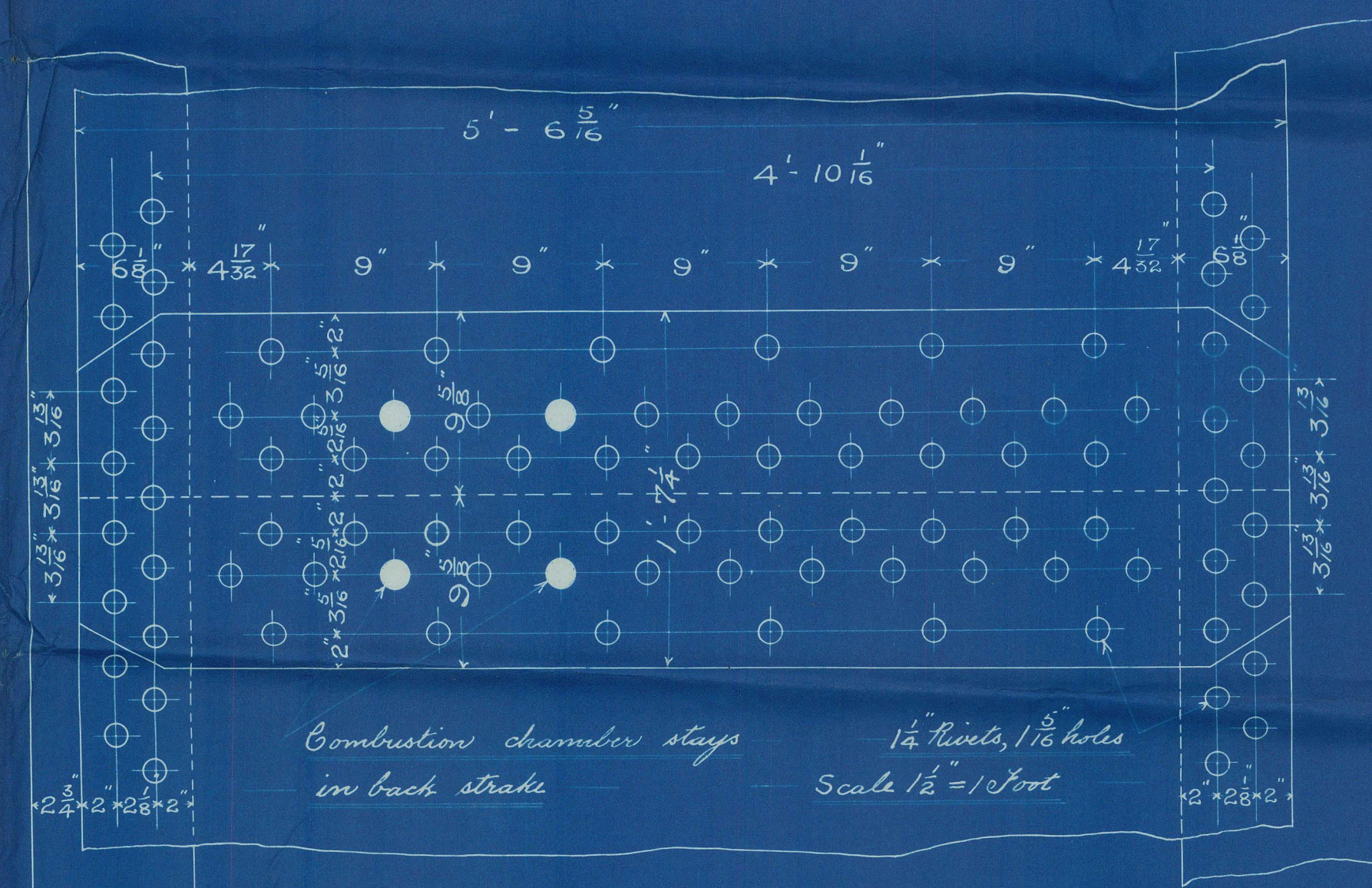
214
12-11-96



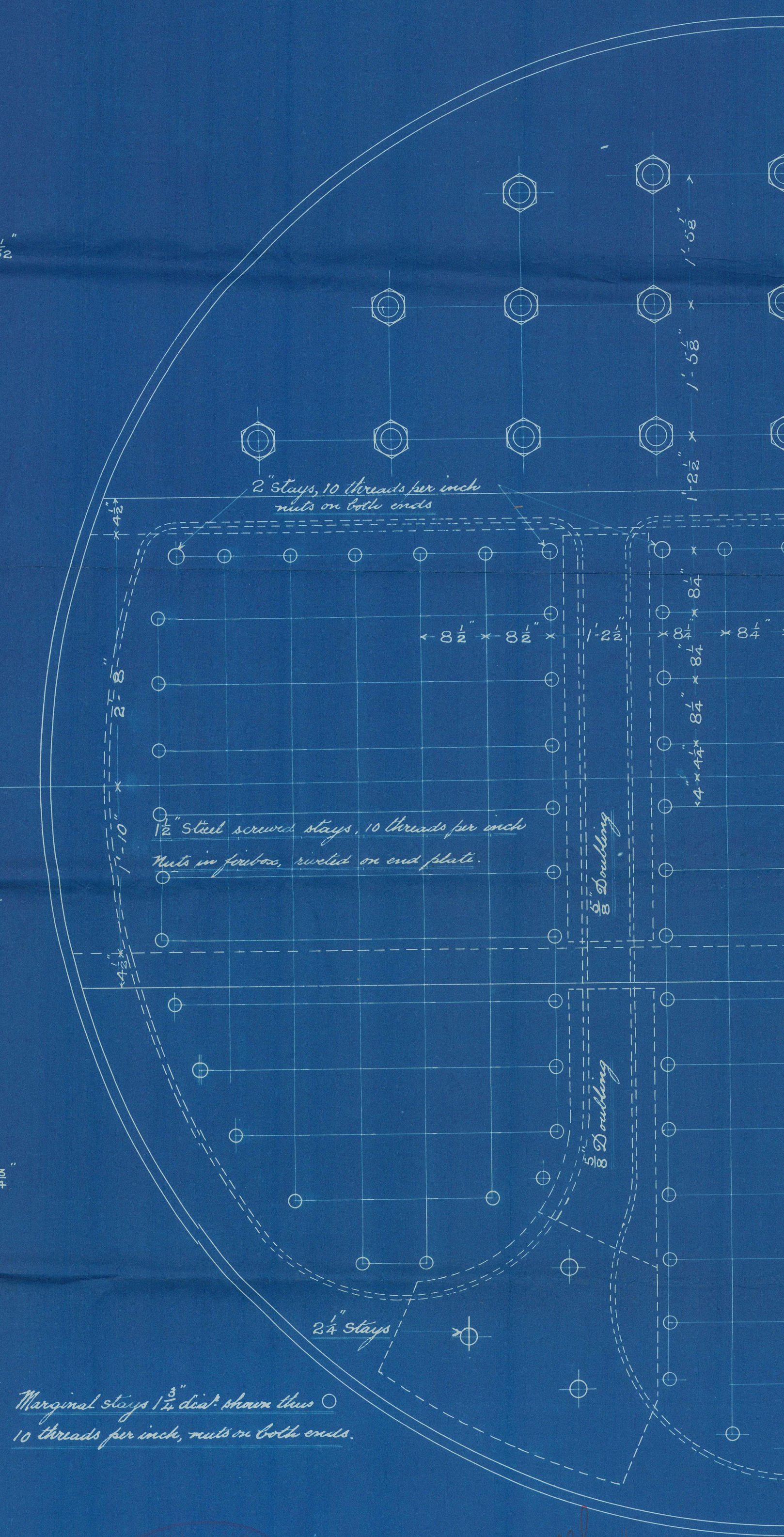
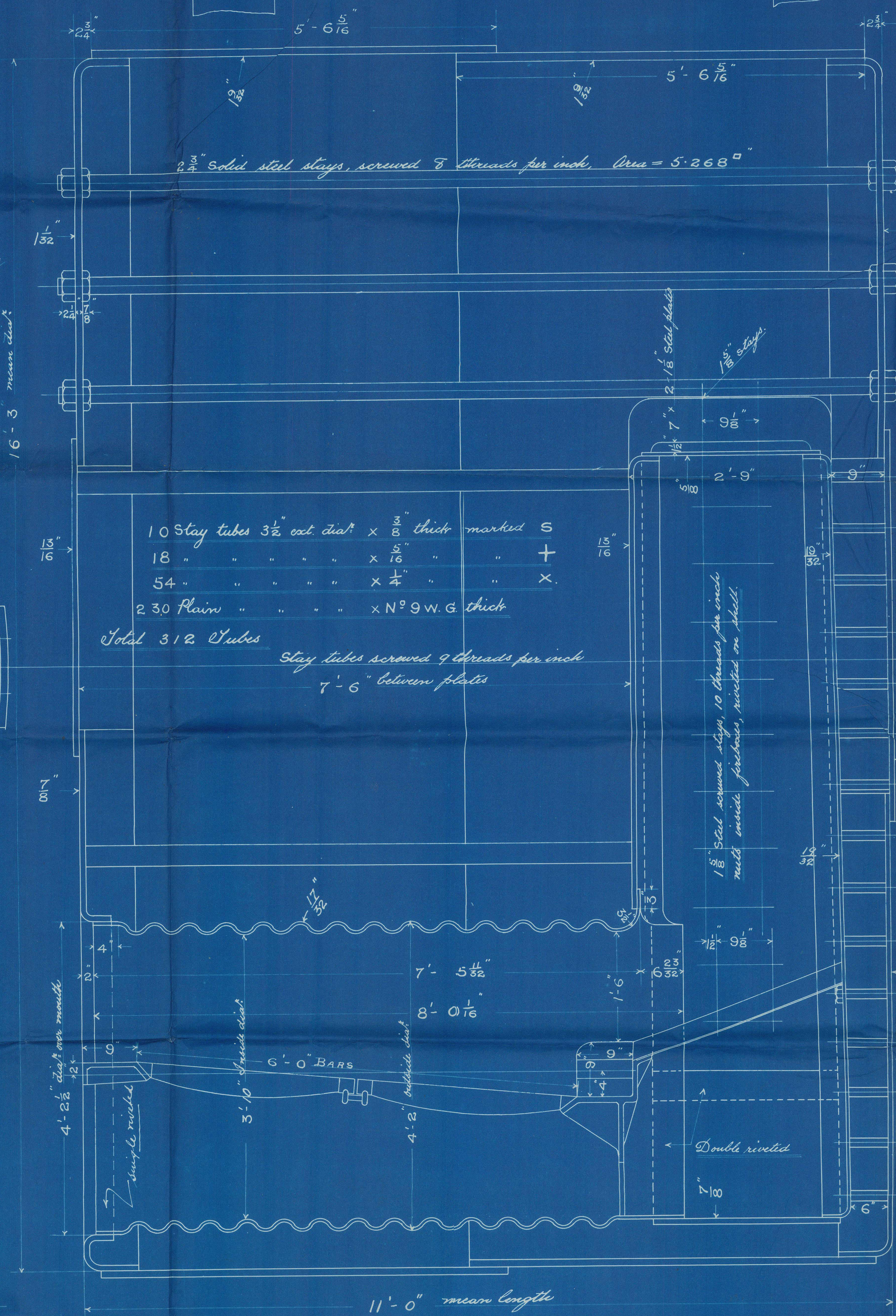
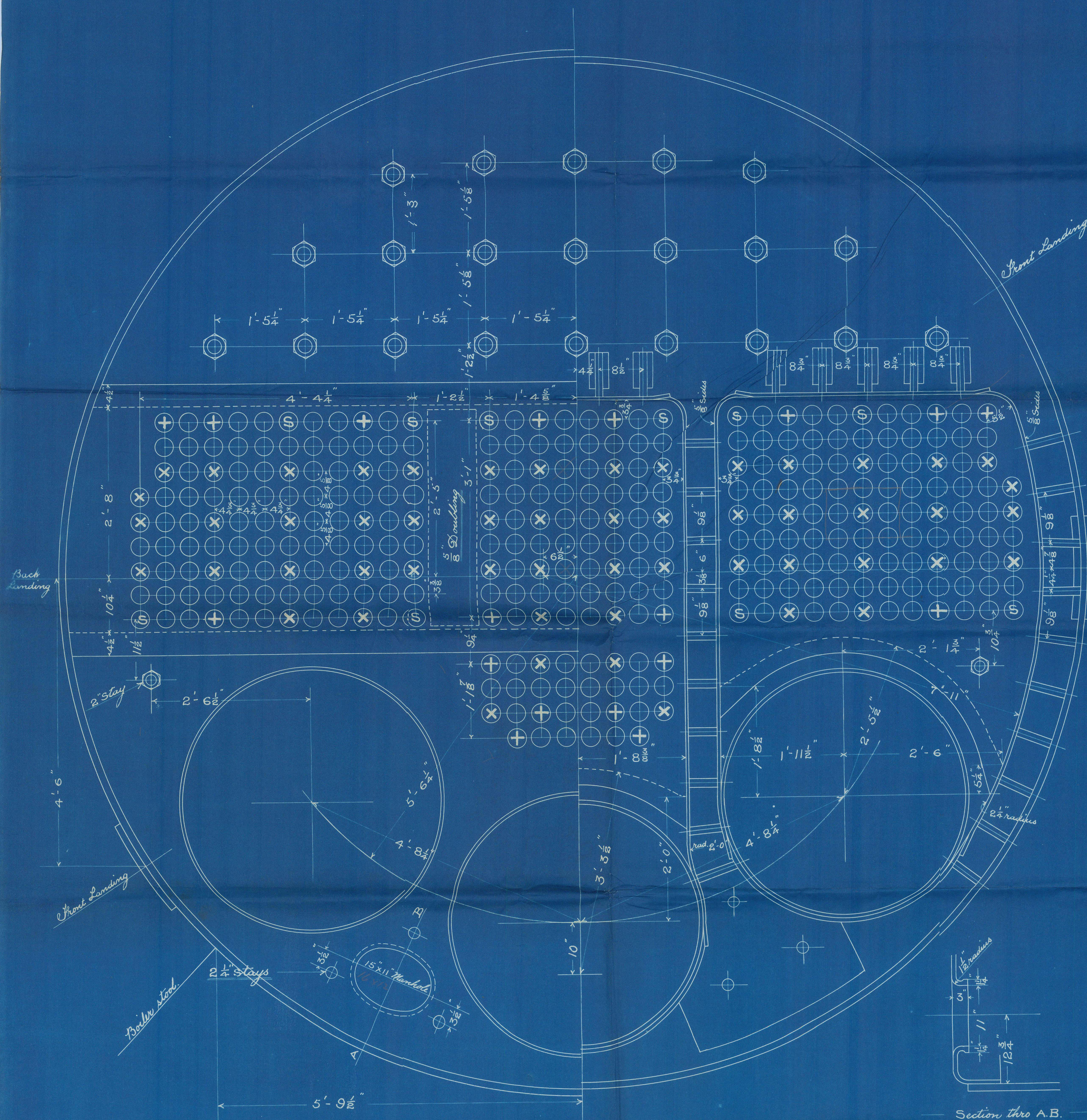
1" Rivets, 1/2" Holes
Shell compensating plate, 1 3/8" thick

Particulars

Heating Surface - tubes	= 2144.1 sq
" 3 furnaces	= 173.0 sq
" 3 Comb. dia.	= 256.5 sq
" Total	= 2573.6 sq
Grate surface - (6 ft bars)	= 69 sq



Shell 1 3/8", Rivets 1 1/2", Holes 1 1/8"
Long pitch = 9", Circ. pitch = 3 1/8"
Plate = 85.41%, Rivets = 54.07%
Inner butt straps 1 1/8" thick, Outer butt straps 1" thick.
All holes drilled in place
Border steel, tubes iron
To Lloyd's requirements for a
working pressure of 160 lbs per sq.



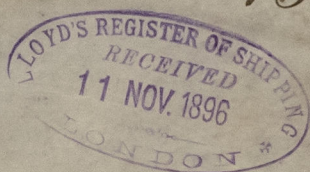
STEEL BOILER N° 185.

WORKING PRESSURE = 160 LBS. PER SQUARE INCH UNDER LLOYD'S SURVEY.

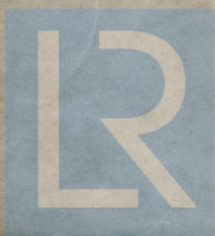
SCALE ~ 1 INCH = 1 FOOT.

GL5261-0099

Boilers
S. S. "Vile"
Glasgow Report No. 15265,



GLS261-0099



© 2021

Lloyd's Register
Foundation