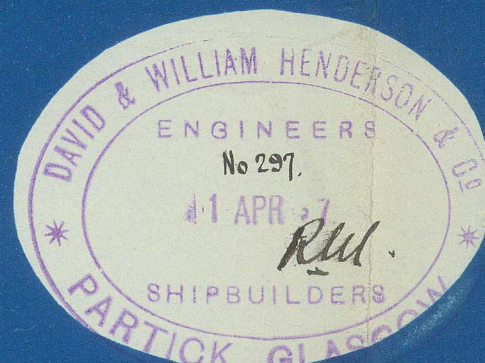


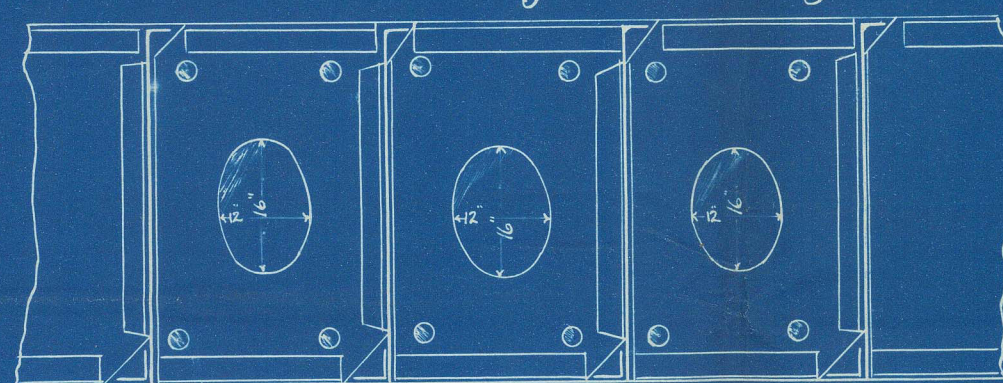
SCALE $\frac{1}{2}$ INCH = 1 FOOT



Erections.

$$\begin{array}{r} 113.01 \\ \underline{443} \\ 50063.43 \\ \underline{3178.40} \\ 53241.83 \end{array}$$
 Equipment Number

3" Holes for drainage



Centre Girders 18" x 20" to 30". Butts trouble
riveted overlaps all fore and aft. 1p Boiler
space $\frac{1}{2}$ 2 ir. p.
Centre Girders to be watertight in E & B.
space where shown on profile

Numerals

$\frac{1}{2}$ Breadth = 24.58
 $\frac{1}{2}$ Girth = 53.91
 Depth = 34.52

$$\begin{array}{r} 7.00 \\ 106.01 \\ \hline 443 \\ 46962.43 \end{array} \quad \begin{array}{l} \text{Frame No} \\ \text{Plating No} \end{array}$$

Diagram of a 7 1/2 inch fore peak. The peak has a top width of 3 inches and a base width of 8 inches.

Pillars $5\frac{3}{4} \times 7\frac{1}{2}$ from Tank top to lower Deck. Pillars between main and lower Decks $3\frac{1}{2}$ solid.

Frames $6\frac{1}{2} \times 3\frac{1}{2} \times \frac{110}{100}$ to form 10 $\frac{1}{2}$ Binder with reverse frames, all frames doubled to Upper Deck abaft after Peak Bulkhead. Frames up both peaks $6\frac{1}{2} \times 3\frac{1}{2}$ only. Frames on web frames to lap 5" only. Rib frames $4\frac{1}{2} \times 3\frac{1}{2}$. Frames with cellular bottom $3\frac{1}{2} \times 3\frac{1}{2} \times \frac{120}{100}$. Frames spaced 3" apart except in fore, and after Peaks which are spaced 2" apart. Frames from 10 to 21 are 158-170 are $6\frac{1}{2} \times 3\frac{1}{2} \times \frac{150}{100}$. Reverse frames of 7' 8 $\frac{1}{2}$ x $\frac{110}{100}$ extending to Upper Deck on every frame with $\frac{1}{2}$ length amidships. Before, and abaft the 4' length to extend to main, and Upper Deck alternately except in way of Torcible where they extend to peak and main Deck alternately. Reverse frames from 10-21, and from 158-179 are $6\frac{1}{2} \times 3\frac{1}{2}$ also in Torcible.

Bulkheads $\frac{8\frac{1}{2}}{20}$, bottom plate $\frac{10}{20}$ instead of brackets to Tank Top. Stiffened vertically by angles $6\frac{1}{2} \times \frac{3}{4}$ spaced 3" apart.

Stiffened horizontally in bulk angles, or collision bulkhead, and all bulkheads exceeding 4'-0" in width, of $8\frac{1}{2} \times 3\frac{1}{2}$ all attached to vessel's sides with brackets. All bulkheads exceeding 5' and under 4'-0" additionally stiffened by a central, vertical, web from Tank Top to top of lower Deck, and BHS, exceeding 4'-0" in width to have 2 vertical webs, stiffened by semi Box Beams.

Connections to Tank Top of $4\frac{1}{2} \times 8\frac{1}{2} \times \frac{10\frac{1}{2}}{20}$ double.

Floors at ends of Vessel $\frac{9\frac{1}{2}}{20}$. Transom $4\frac{1}{2} \times 8\frac{1}{2}$.

Pop, Bridge, and Fore'sie Decks of Tank 5' x 5' Tie Plate 15' x 7' 20"

Bridge Deck Stringer 36' x 1/2" Pop + tie 7/20 Butts double riveted. Bridge Deck 36' x 1/2" Pop + tie 7/20 Butts double riveted. Bridge Deck 36' x 1/2" Pop + tie 7/20 Butts double riveted.

Bridge Beams of Bulb Tee 8' x 1/2" on alternate frames. Tie Beams of 7' x 3' x 1/2" Bulb Tee Angle on every frame. Pop Beams of Bulb Tee 8' x 1/2" on alternate frames.

Under 40 Feet

Stringer Plate 67' x 1/2" for 1/2 length reduced to 1/2 length for 1/2 length further reduced to 1/2 length for 1/2 length. Butts double overlapped for 1/2 length. Remainder treble Angle 5' x 5' 10' x 1/2" 10' x 1/2" 10' x 1/2"

Double straps treble riveted double riveted landing edge

1/2" in way of Pop, Bridge, + Fore'sie Double Riveted Butts 7/20 Thick

Bulwark 5' steel Butts single riveted.

3' lap

Sh. Strake 6' x 1/2" in place of doubling for 1/2 length, 1/2 for 1/2 length + further reduced to 1/2 at ends. Double Butts treble riveted fore and aft with rivets. Butts outside 1/2, inside 1/2 for 1/2 length remainder per table doubled at ends of Bridge

5' x 1/2" for 1/2 length reduced to 1/2 for 1/2 length, + further reduced to 1/2 at ends. Double Butts treble riveted outer straps 1/2, + inner straps 1/2 with rivets for 1/2 length, remainder per table

15' x 1/2" Butts treble riveted fore, + aft, + 1/2 thicker for 1/2 + 1/2 at ends.

11' x 1/2" Butts treble overlapped

6' lap

Butts treble overlapped

14' x 1/2" Butts treble overlapped

15' x 1/2" Butts treble overlapped

16' x 1/2" Butts treble overlapped

17' x 1/2" Butts treble overlapped

18' x 1/2" Butts treble overlapped

19' x 1/2" Butts treble overlapped

20' x 1/2" Butts treble overlapped

21' x 1/2" Butts treble overlapped

22' x 1/2" Butts treble overlapped

23' x 1/2" Butts treble overlapped

24' x 1/2" Butts treble overlapped

25' x 1/2" Butts treble overlapped

26' x 1/2" Butts treble overlapped

27' x 1/2" Butts treble overlapped

28' x 1/2" Butts treble overlapped

29' x 1/2" Butts treble overlapped

30' x 1/2" Butts treble overlapped

31' x 1/2" Butts treble overlapped

32' x 1/2" Butts treble overlapped

33' x 1/2" Butts treble overlapped

34' x 1/2" Butts treble overlapped

35' x 1/2" Butts treble overlapped

36' x 1/2" Butts treble overlapped

37' x 1/2" Butts treble overlapped

38' x 1/2" Butts treble overlapped

39' x 1/2" Butts treble overlapped

40' x 1/2" Butts treble overlapped

41' x 1/2" Butts treble overlapped

42' x 1/2" Butts treble overlapped

43' x 1/2" Butts treble overlapped

44' x 1/2" Butts treble overlapped

45' x 1/2" Butts treble overlapped

46' x 1/2" Butts treble overlapped

47' x 1/2" Butts treble overlapped

48' x 1/2" Butts treble overlapped

49' x 1/2" Butts treble overlapped

50' x 1/2" Butts treble overlapped

51' x 1/2" Butts treble overlapped

52' x 1/2" Butts treble overlapped

53' x 1/2" Butts treble overlapped

54' x 1/2" Butts treble overlapped

55' x 1/2" Butts treble overlapped

56' x 1/2" Butts treble overlapped

57' x 1/2" Butts treble overlapped

58' x 1/2" Butts treble overlapped

59' x 1/2" Butts treble overlapped

60' x 1/2" Butts treble overlapped

61' x 1/2" Butts treble overlapped

62' x 1/2" Butts treble overlapped

63' x 1/2" Butts treble overlapped

64' x 1/2" Butts treble overlapped

65' x 1/2" Butts treble overlapped

66' x 1/2" Butts treble overlapped

67' x 1/2" Butts treble overlapped

68' x 1/2" Butts treble overlapped

69' x 1/2" Butts treble overlapped

70' x 1/2" Butts treble overlapped

71' x 1/2" Butts treble overlapped

72' x 1/2" Butts treble overlapped

73' x 1/2" Butts treble overlapped

74' x 1/2" Butts treble overlapped

75' x 1/2" Butts treble overlapped

76' x 1/2" Butts treble overlapped

77' x 1/2" Butts treble overlapped

78' x 1/2" Butts treble overlapped

79' x 1/2" Butts treble overlapped

80' x 1/2" Butts treble overlapped

81' x 1/2" Butts treble overlapped

82' x 1/2" Butts treble overlapped

83' x 1/2" Butts treble overlapped

84' x 1/2" Butts treble overlapped

85' x 1/2" Butts treble overlapped

86' x 1/2" Butts treble overlapped

87' x 1/2" Butts treble overlapped

88' x 1/2" Butts treble overlapped

89' x 1/2" Butts treble overlapped

90' x 1/2" Butts treble overlapped

91' x 1/2" Butts treble overlapped

92' x 1/2" Butts treble overlapped

93' x 1/2" Butts treble overlapped

94' x 1/2" Butts treble overlapped

95' x 1/2" Butts treble overlapped

96' x 1/2" Butts treble overlapped

97' x 1/2" Butts treble overlapped

98' x 1/2" Butts treble overlapped

99' x 1/2" Butts treble overlapped

100' x 1/2" Butts treble overlapped

101' x 1/2" Butts treble overlapped

102' x 1/2" Butts treble overlapped

103' x 1/2" Butts treble overlapped

104' x 1/2" Butts treble overlapped

105' x 1/2" Butts treble overlapped

106' x 1/2" Butts treble overlapped

107' x 1/2" Butts treble overlapped

108' x 1/2" Butts treble overlapped

109' x 1/2" Butts treble overlapped

110' x 1/2" Butts treble overlapped

111' x 1/2" Butts treble overlapped

112' x 1/2" Butts treble overlapped

113' x 1/2" Butts treble overlapped

114' x 1/2" Butts treble overlapped

115' x 1/2" Butts treble overlapped

116' x 1/2" Butts treble overlapped

117' x 1/2" Butts treble overlapped

118' x 1/2" Butts treble overlapped

119' x 1/2" Butts treble overlapped

120' x 1/2" Butts treble overlapped

121' x 1/2" Butts treble overlapped

122' x 1/2" Butts treble overlapped

123' x 1/2" Butts treble overlapped

124' x 1/2" Butts treble overlapped

125' x 1/2" Butts treble overlapped

126' x 1/2" Butts treble overlapped

127' x 1/2" Butts treble overlapped

128' x 1/2" Butts treble overlapped

129' x 1/2" Butts treble overlapped

130' x 1/2" Butts treble overlapped

131' x 1/2" Butts treble overlapped

132' x 1/2" Butts treble overlapped

133' x 1/2" Butts treble overlapped

134' x 1/2" Butts treble overlapped

135' x 1/2" Butts treble overlapped

136' x 1/2" Butts treble overlapped

137' x 1/2" Butts treble overlapped

138' x 1/2" Butts treble overlapped

139' x 1/2" Butts treble overlapped

140' x 1/2" Butts treble overlapped

141' x 1/2" Butts treble overlapped

142' x 1/2" Butts treble overlapped

143' x 1/2" Butts treble overlapped

144' x 1/2" Butts treble overlapped

145' x 1/2" Butts treble overlapped

146' x 1/2" Butts treble overlapped

147' x 1/2" Butts treble overlapped

148' x 1/2" Butts treble overlapped

149' x 1/2" Butts treble overlapped

150' x 1/2" Butts treble overlapped

151' x 1/2" Butts treble overlapped

152' x 1/2" Butts treble overlapped

153' x 1/2" Butts treble overlapped

154' x 1/2" Butts treble overlapped

155' x 1/2" Butts treble overlapped

156' x 1/2" Butts treble overlapped

157' x 1/2" Butts treble overlapped

158' x 1/2" Butts treble overlapped

159' x 1/2" Butts treble overlapped

160' x 1/2" Butts treble overlapped

161' x 1/2" Butts treble overlapped

162' x 1/2" Butts treble overlapped

163' x 1/2" Butts treble overlapped

164' x 1/2" Butts treble overlapped

165' x 1/2" Butts treble overlapped

166' x 1/2" Butts treble overlapped

167' x 1/2" Butts treble overlapped

168' x 1/2" Butts treble overlapped

169' x 1/2" Butts treble overlapped

170' x 1/2" Butts treble overlapped

171' x 1/2" Butts treble overlapped

172' x 1/2" Butts treble overlapped

173' x 1/2" Butts treble overlapped

174' x 1/2" Butts treble overlapped

175' x 1/2" Butts treble overlapped

176' x 1/2" Butts treble overlapped

177' x 1/2" Butts treble overlapped

178' x 1/2" Butts treble overlapped

179' x 1/2" Butts treble overlapped

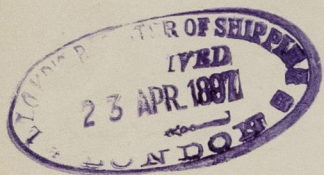
180' x 1/2" Butts treble overlapped

181' x 1/2" Butts treble overlapped

182' x 1/2" Butts treble overlapped

183'

S.S. "Wakasa Maru" Glasgow Report No. 15163



~~For~~ sister vessel to the S.S. "Kanagawa Maru" Gl. 14870

and S.S. "Wakata Maru" Gl. 15019.



© 2021

Lloyd's Register
Foundation

GLS261-0058