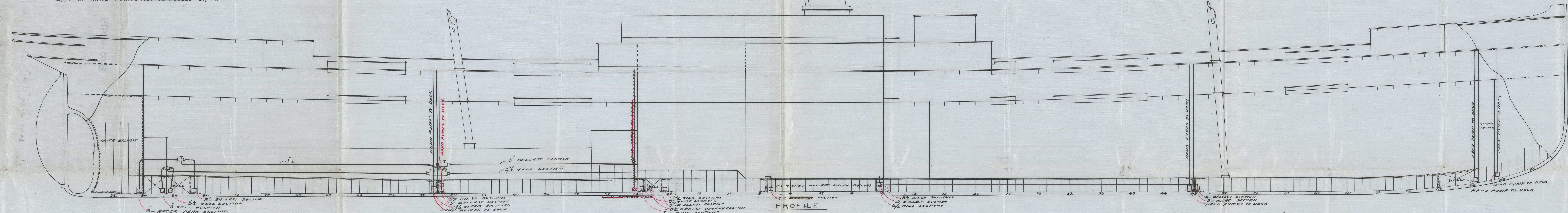


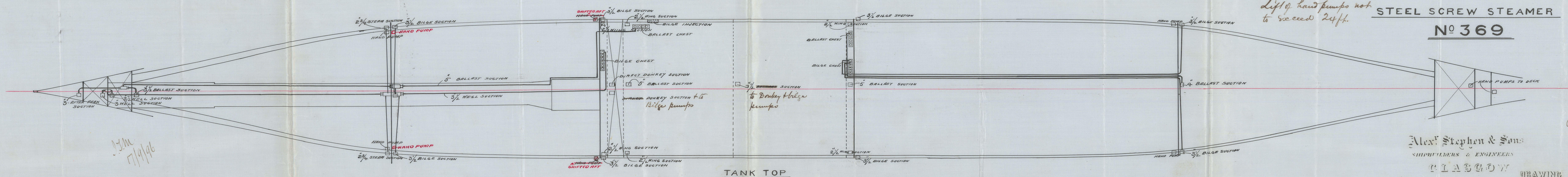
14.9.96
17/9/96
14.9.96

PUMPING ARRANGEMENT

NOTE: UNDER DECK TONNAGE ABOUT 4000 TONS
LIFT OF HAND PUMPS NOT TO EXCEED 24 FEET



PROFILE



TANK TOP

Lift of hand pumps not to exceed 24 ft.

STEEL SCREW STEAMER
No 369

SCALE 1/8" INCH TO A FOOT

17/9/96

Alex. Stephen & Sons
SHIPBUILDERS & ENGINEERS

GLASGOW DRAWING No 7942

GLS259-0033

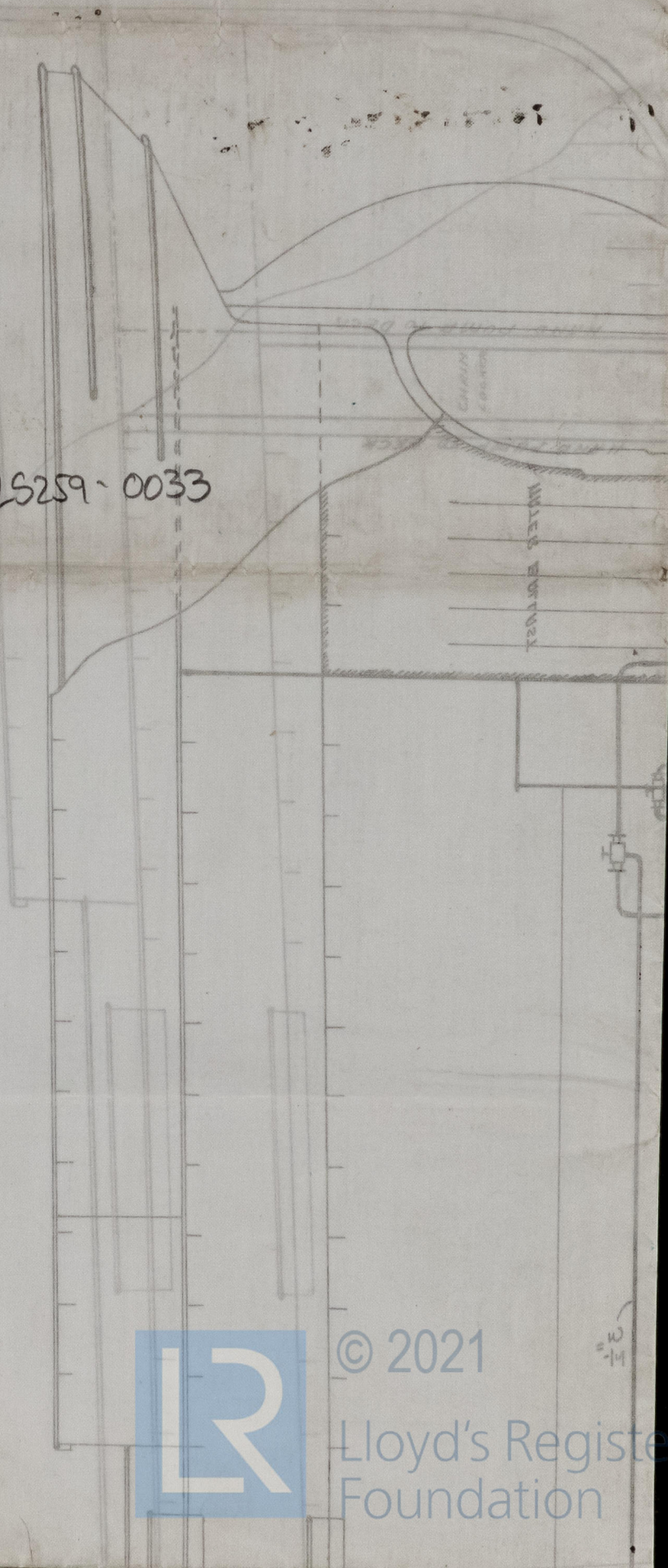
16.9.96

"S. S. Pisa" Glasgow Report No. 14892.-



FIELD OF HAND BOUNDS NOT TO EXCEED 54 FEET
MOLE UNDER DECK LOWEST ABOUT 2000 TONS

GLS259-0033



© 2021

Lloyd's Register
Foundation

21