

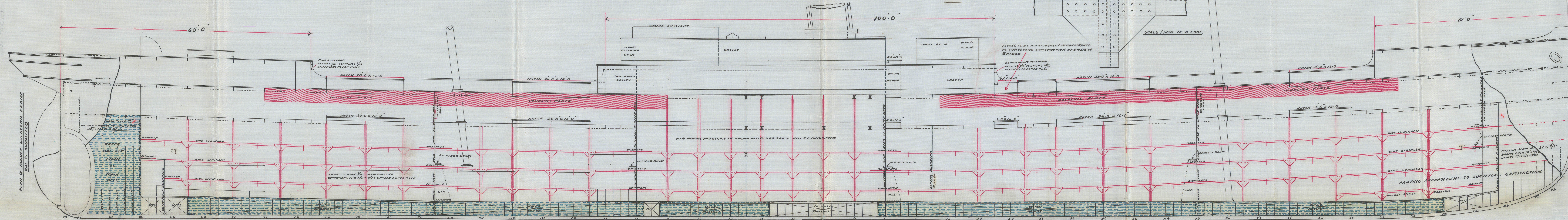
-N<sup>o</sup> 369.- Profile as built

NOTE.

DECK PLANS WILL BE SUBMITTED SHEWING PLATING  
INCREASED IN WAY OF OPENINGS

<u>SKETCH OF</u>	<u>DIAMOND PLAT</u>
------------------	---------------------

SCALE 1 INCH TO A FOOT



SCALE  $\frac{1}{8}$  INCH TO A FOOT

STRONG BEAMS; PLATE 12" <sup>12</sup>/<sub>20</sub>" 4 ANGLES 5 1/2" 4" x 9/20  
PLACED WHERE PRACTICABLE  
DECK PLANS WILL BE SUBMITTED

Alex<sup>r</sup> Stephen & Sons

SHIPBUILDERS &amp; ENGINEERS.

GLASGOW

DRAWING № 8049

18/11/96 W.H.C.

© 2025

Lloyd's Register  
Foundation



S. S. "Pisa" Glasgow Report No. 14892.—

GLS259-0026

PLAN OF RUDDER AND STEER FRAME  
WILL BE SUBMITTED



SCITE 81/100 TO A FOOT

6700 IN GINCKVH



© 2021

Lloyd's Register  
Foundation