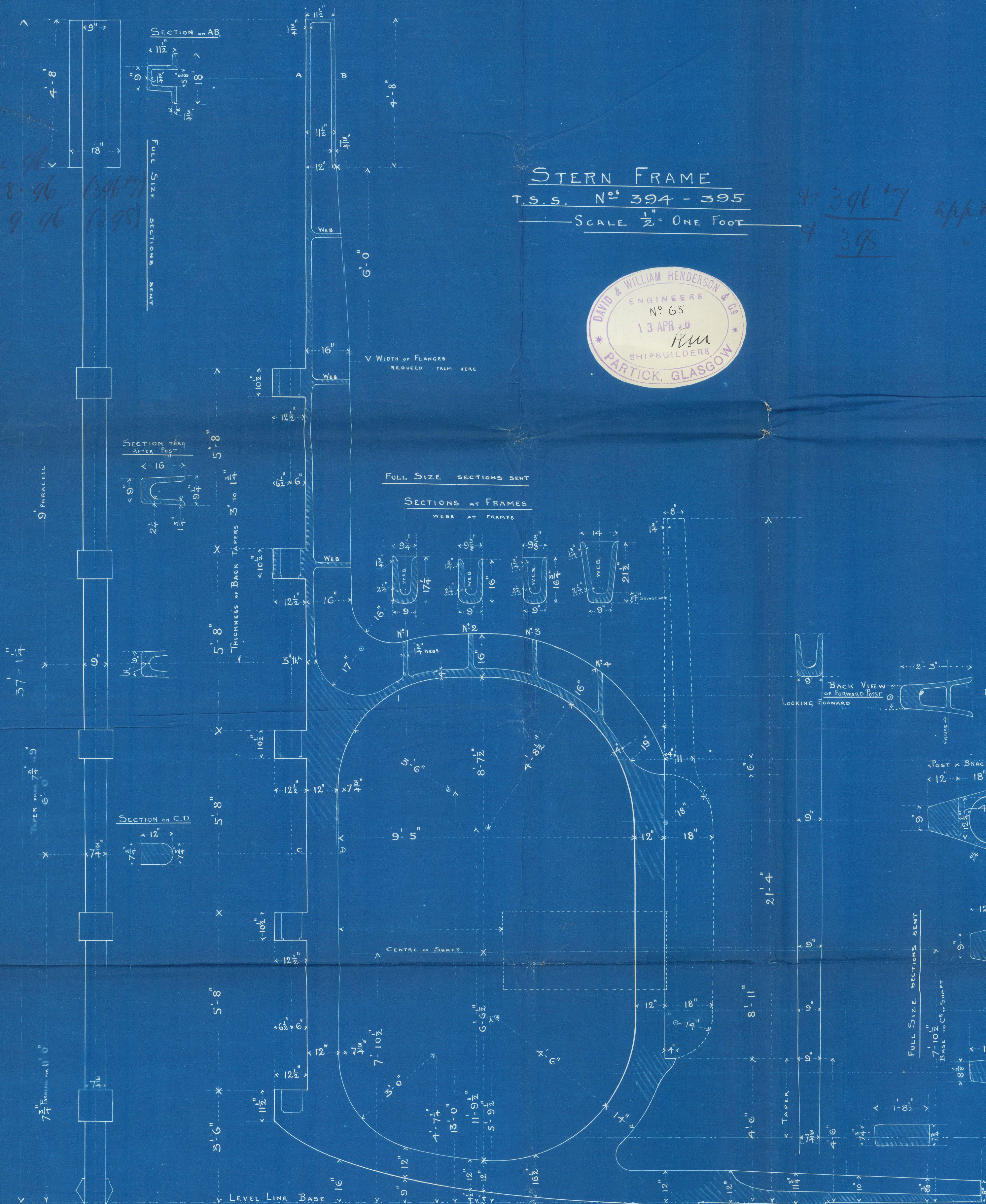


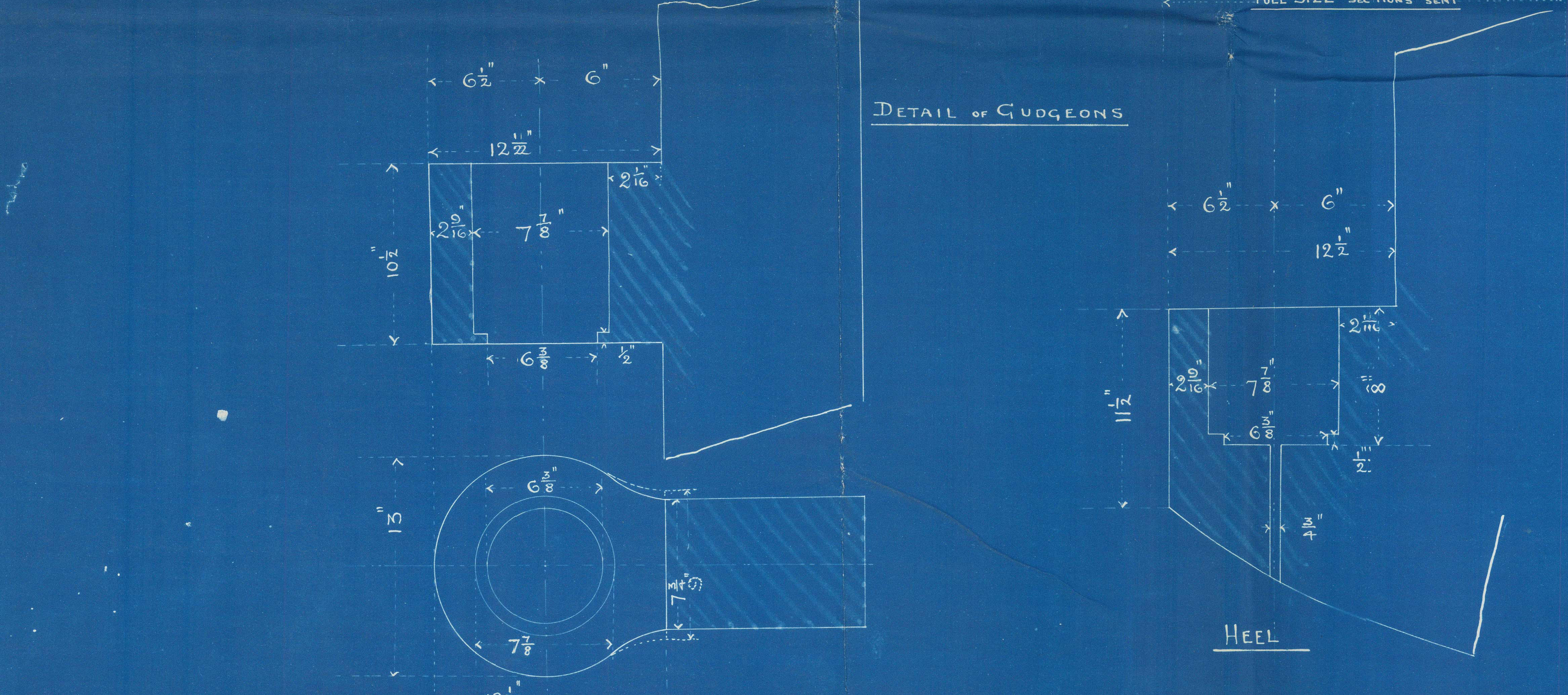
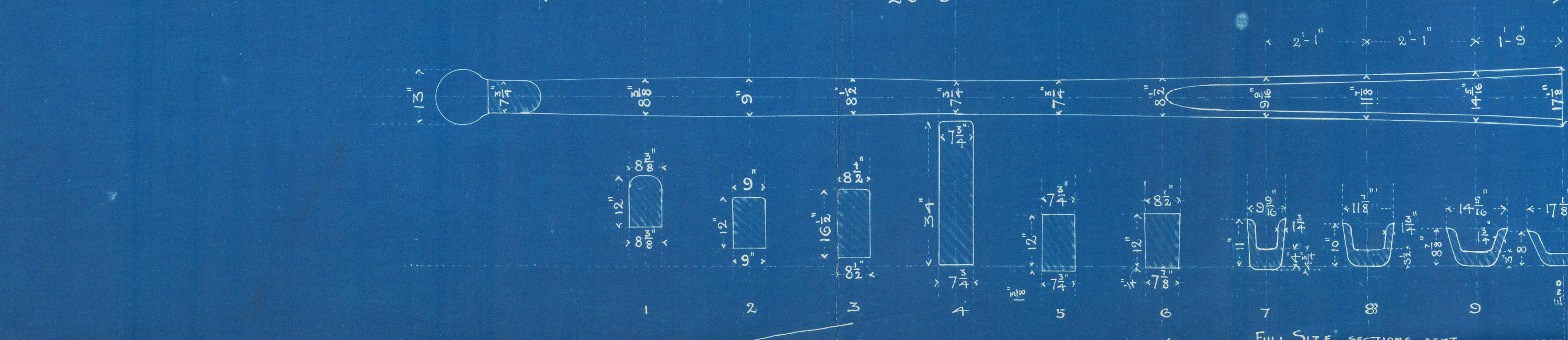
16.4.96
6.8.96
3.9.96

STERN FRAME
T.S.S. N° 394-395
SCALE 1/2" = ONE FOOT

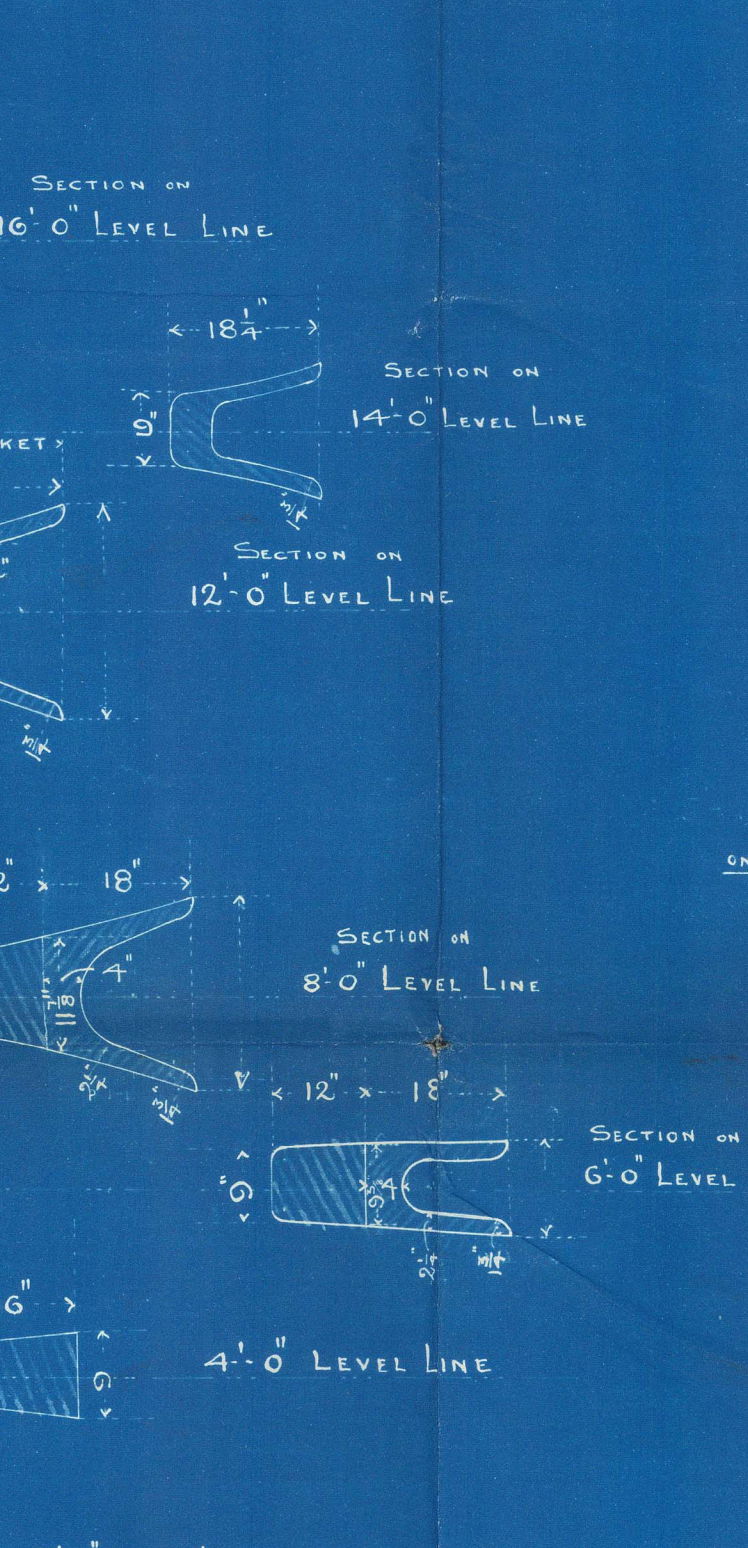
473967
47398
APPD 4/9/96
3/9/96



BACK VIEW OF AFTER PORT
Looking Forward



HEEL



TO N° 0 FRAME
ON STAND SIDE

TO N° 0
ON PORT SIDE

TO N° 0
ON PORT SIDE

TO N° 0
ON PORT SIDE

TO N° 0
ON PORT SIDE

TO N° 0
ON PORT SIDE

TO N° 0
ON PORT SIDE

TO N° 0
ON PORT SIDE

TO N° 0
ON PORT SIDE

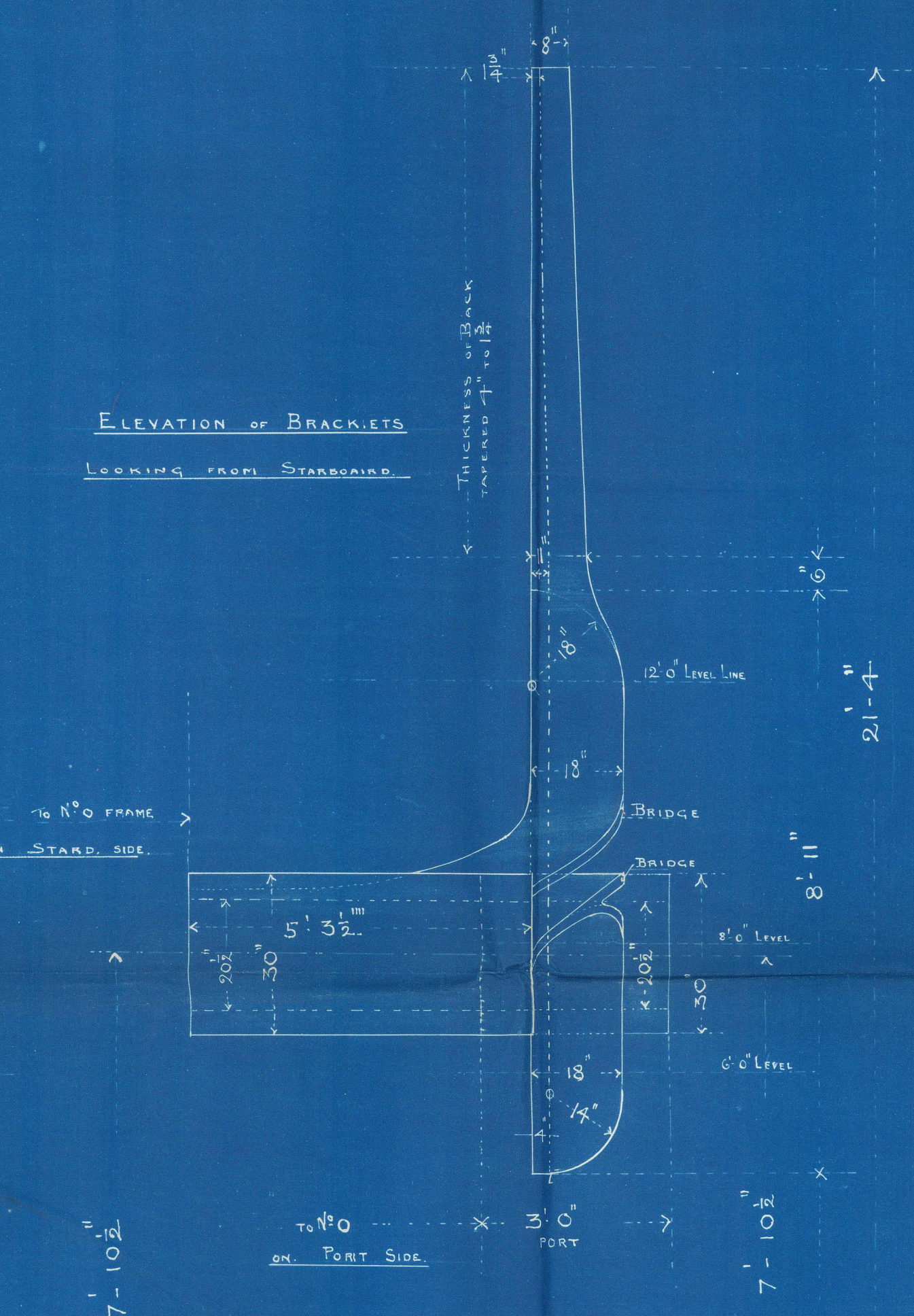
TO N° 0
ON PORT SIDE

TO N° 0
ON PORT SIDE

TO N° 0
ON PORT SIDE

TO N° 0
ON PORT SIDE

TO N° 0
ON PORT SIDE



TO N° 0 FRAME
ON STAND SIDE

TO N° 0
ON PORT SIDE

TO N° 0
ON PORT SIDE

TO N° 0
ON PORT SIDE

TO N° 0
ON PORT SIDE

TO N° 0
ON PORT SIDE

TO N° 0
ON PORT SIDE

TO N° 0
ON PORT SIDE

TO N° 0
ON PORT SIDE

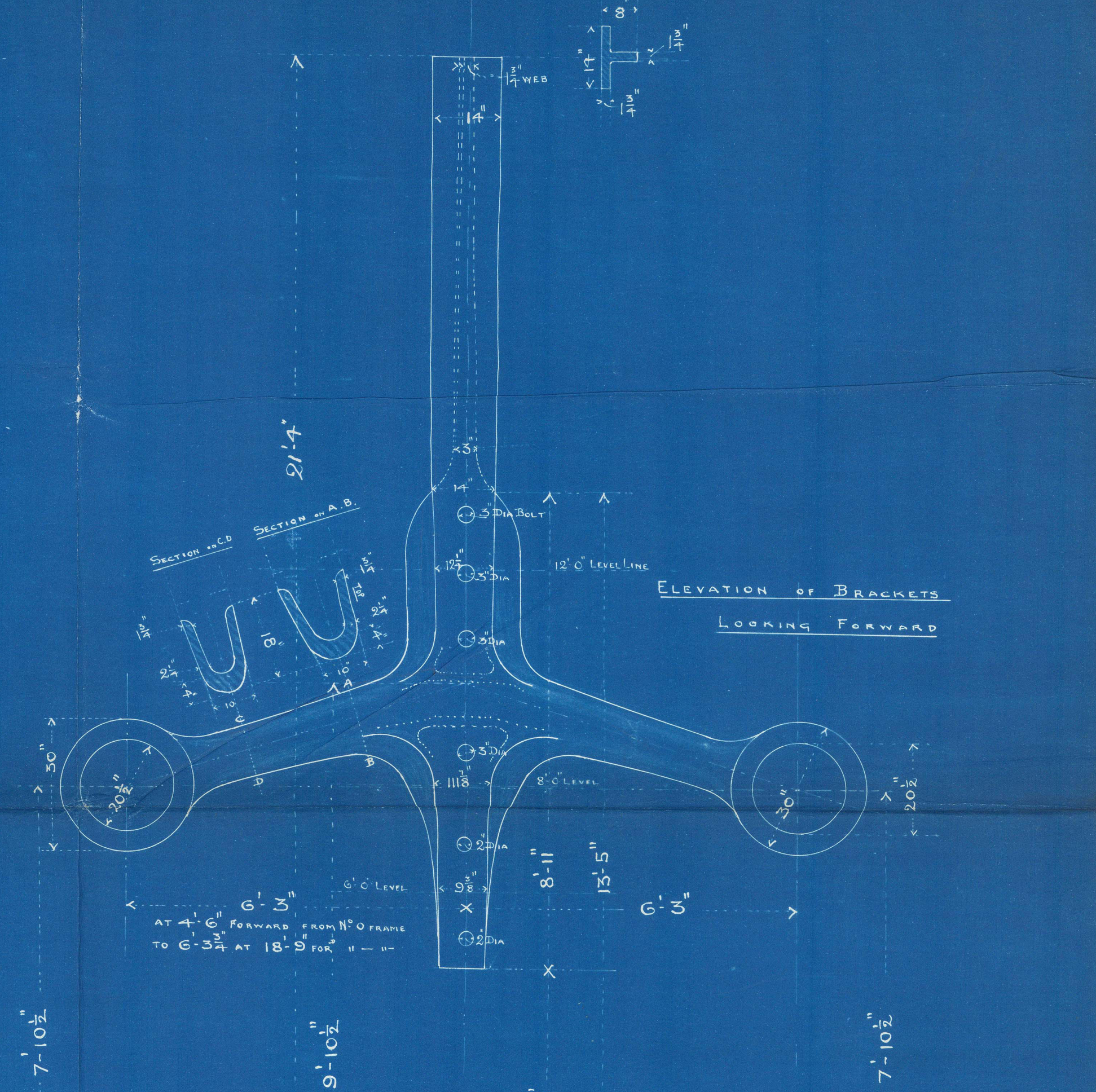
TO N° 0
ON PORT SIDE

TO N° 0
ON PORT SIDE

TO N° 0
ON PORT SIDE

TO N° 0
ON PORT SIDE

TO N° 0
ON PORT SIDE



TO N° 0 FRAME
ON STAND SIDE

TO N° 0
ON PORT SIDE

TO N° 0
ON PORT SIDE

TO N° 0
ON PORT SIDE

TO N° 0
ON PORT SIDE

TO N° 0
ON PORT SIDE

TO N° 0
ON PORT SIDE

TO N° 0
ON PORT SIDE

TO N° 0
ON PORT SIDE

TO N° 0
ON PORT SIDE

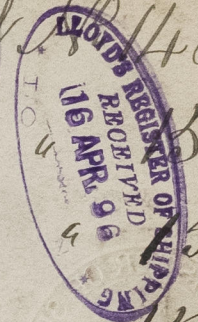
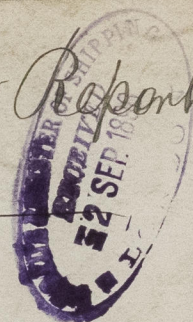
TO N° 0
ON PORT SIDE

TO N° 0
ON PORT SIDE

TO N° 0
ON PORT SIDE

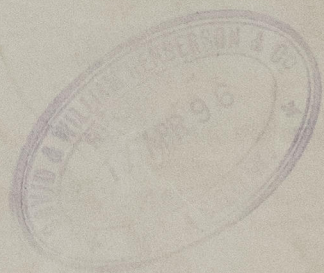
TO N° 0
ON PORT SIDE

S. S. "Kanagawa Maru" Glasgow Report 14840.
 S. S. "Hakata Maru" — do — 15019.
 S. S. "Wakasa Maru" — do — 15163.
 S. S. "Inaba Maru" — do — 15122.
 S. S. "Bingo Maru" — do — 15666.



Hendersons
 394 + 395, 6, 7, 8
 Stern frame
 Shaft brackets





© 2021

Lloyd's Register
Foundation

663238-0103