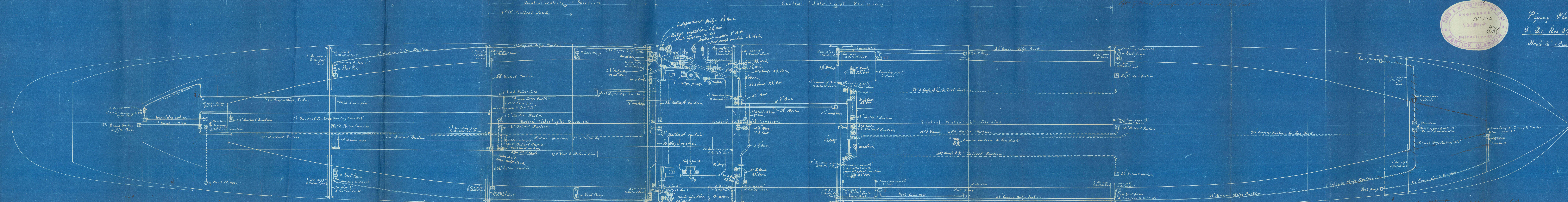
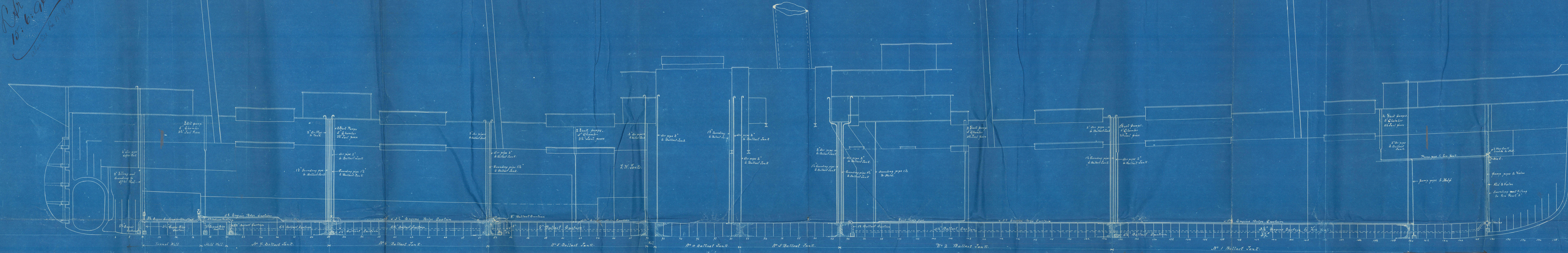
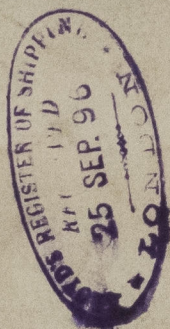
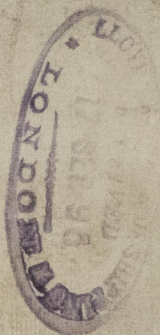
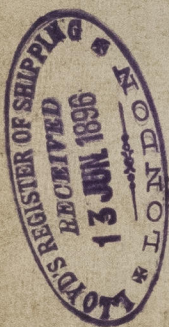


20.6.96
 15.6.96
 11.6.96



Piping Plan.
 S. S. Ross 594-5.
 Scale 1/4" = One Foot.

In view of attention in arrangement of
 ballast tank No. 10, the pumping system of the part
 is similar to those app'd for 596-7-8
 15.6.1906



394 43-

S. S. "Nanagawa Maru" Glasgow Report N^o. 14840.—
S. S. "Hakata Maru" — do

Shipping Office



© 2021

15019.—

Lloyd's Register
Foundation

GUS258-0101