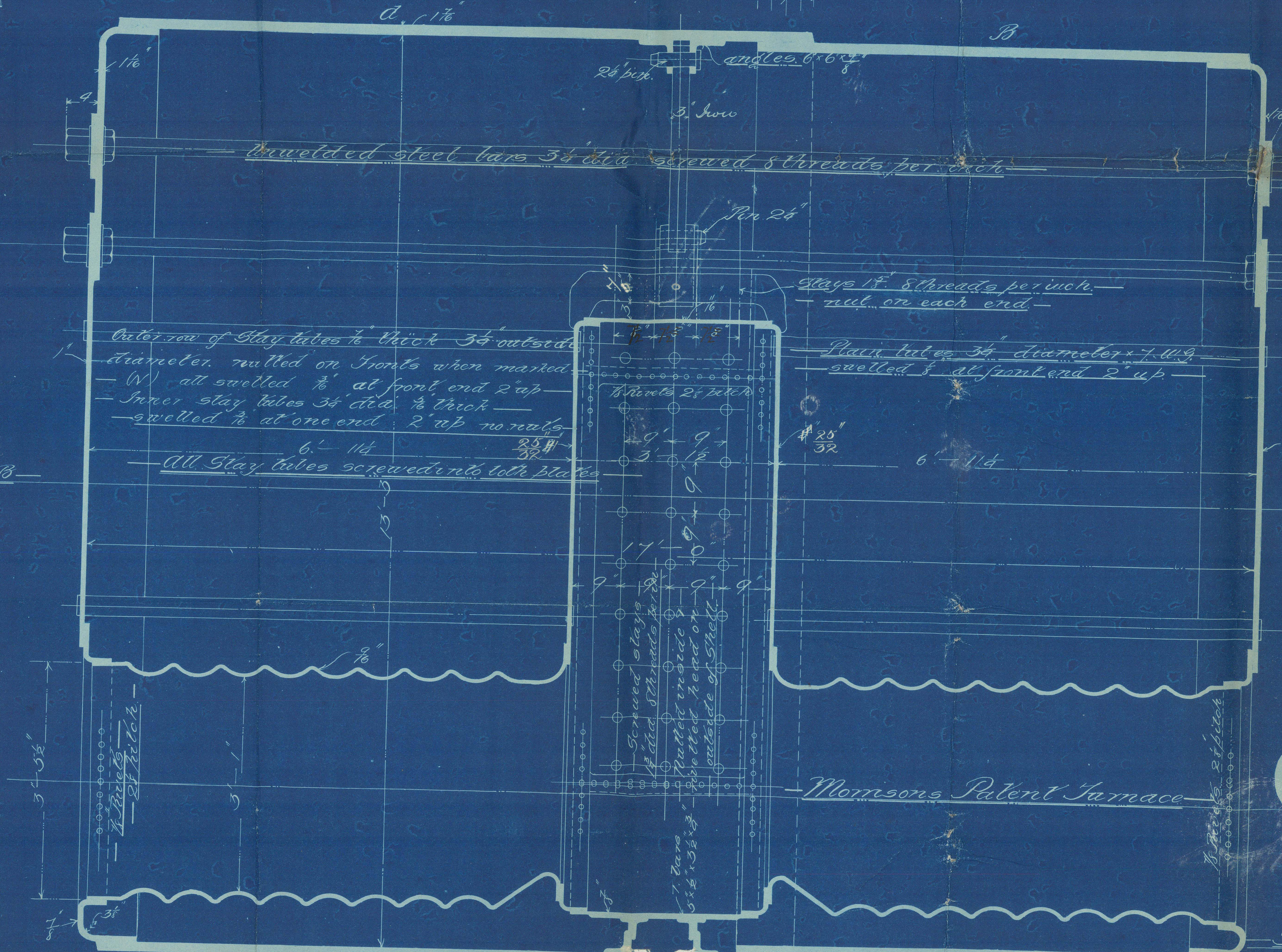
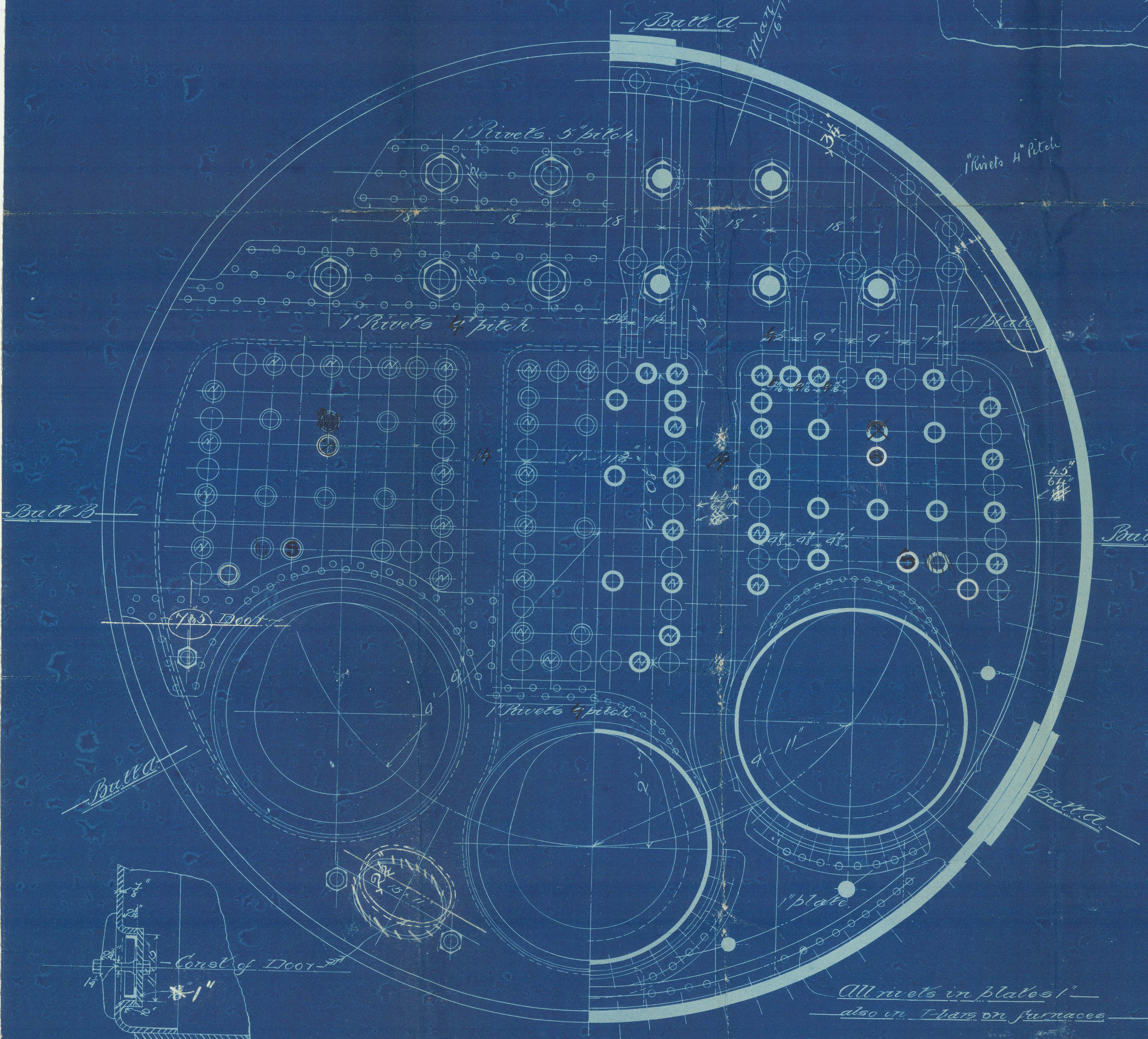


Working Pressure 200 lbs per sq in
Tested do 400 " " "
To Board of Trade and Lloyd's



WILLIAM HENDERSON
ENGINEERING AND
2393
28 MAR 96
SHIP BUILDING
GLASGOW

Scale 1" = One Foot

ENGINES. N°339-5

Boilers

S.S. "Kanagawa Maru"	Glasgow Report N ^o 14840	
S.S. "Yakatu Maru"	do	15019
S.S. "Wakasa Maru"	do	15163
S.S. "Inaba Maru"	do	15422
S.S. "Bingo Maru"	do	15666

Double End 1

395

394

J W Henderson

396

397

398

