

25-3-96  
 6-8-96 (396<sup>17</sup>)  
 3-9-96 (398)

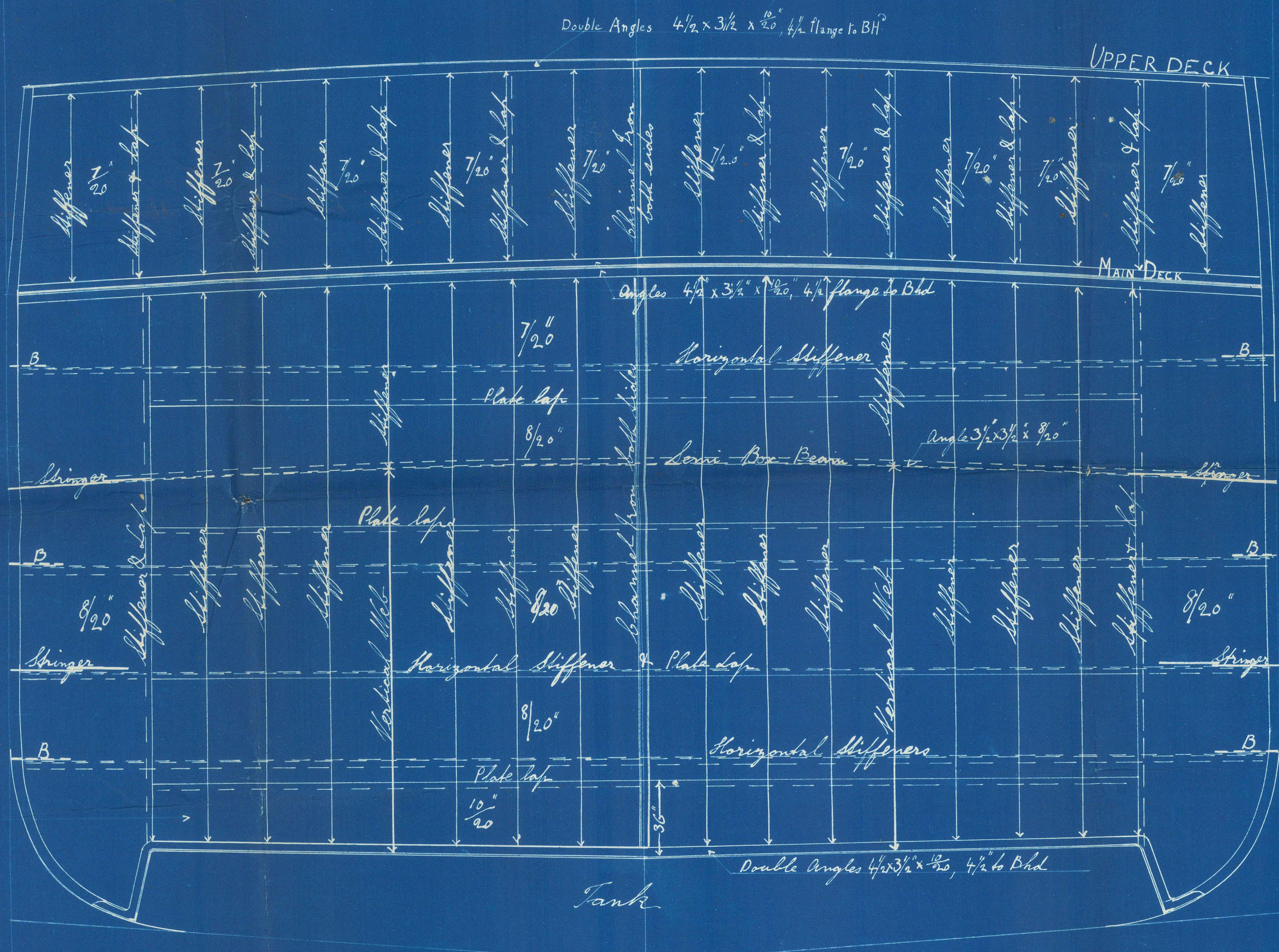
# PLAN OF A WATERTIGHT BULKHEAD

S.S. N<sup>o</sup> 394-5

4-396<sup>17</sup> appo. 1/8/96

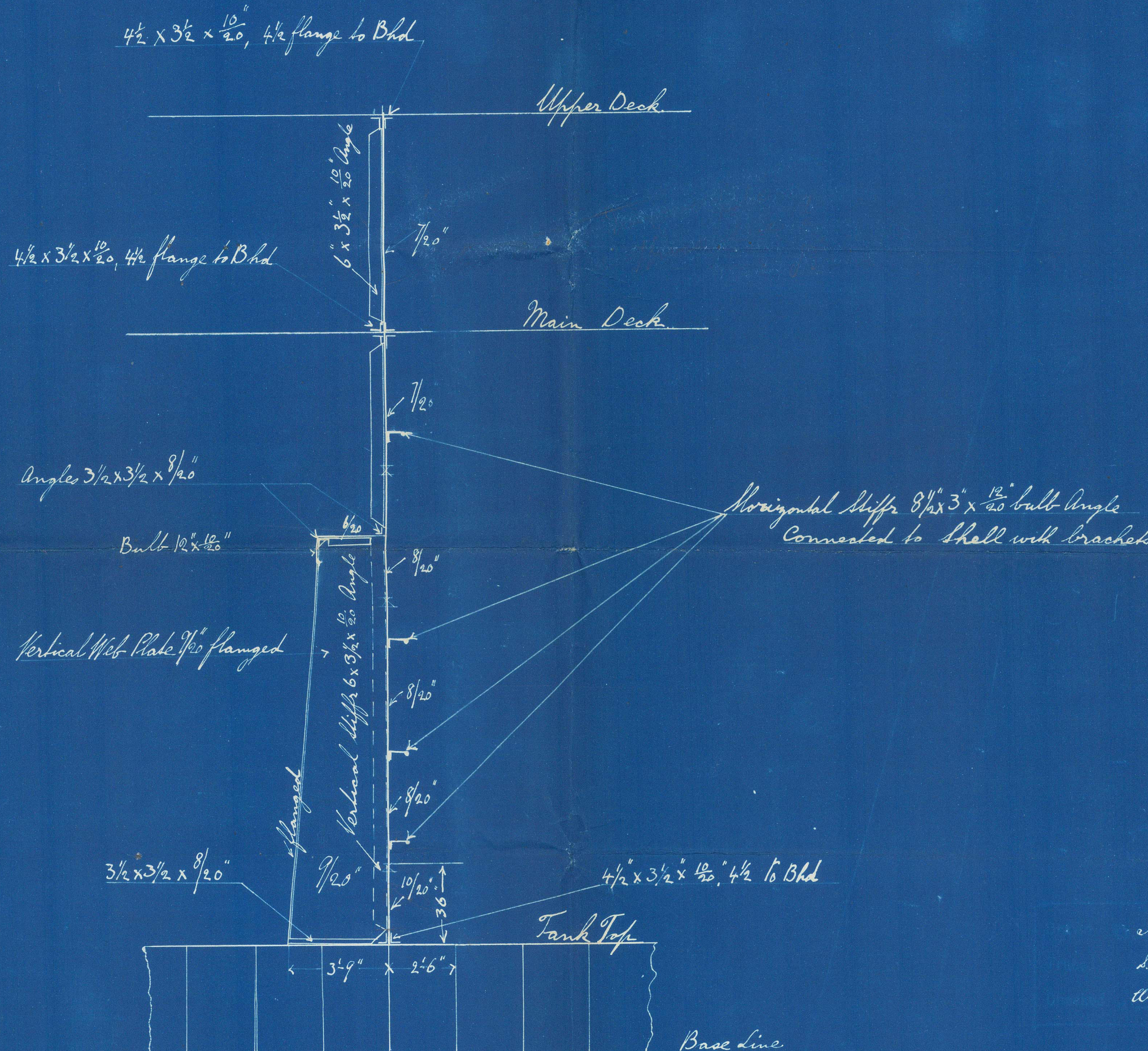
SCALE 1/4" = 1 FOOT

4-398 appo. 2/4/96



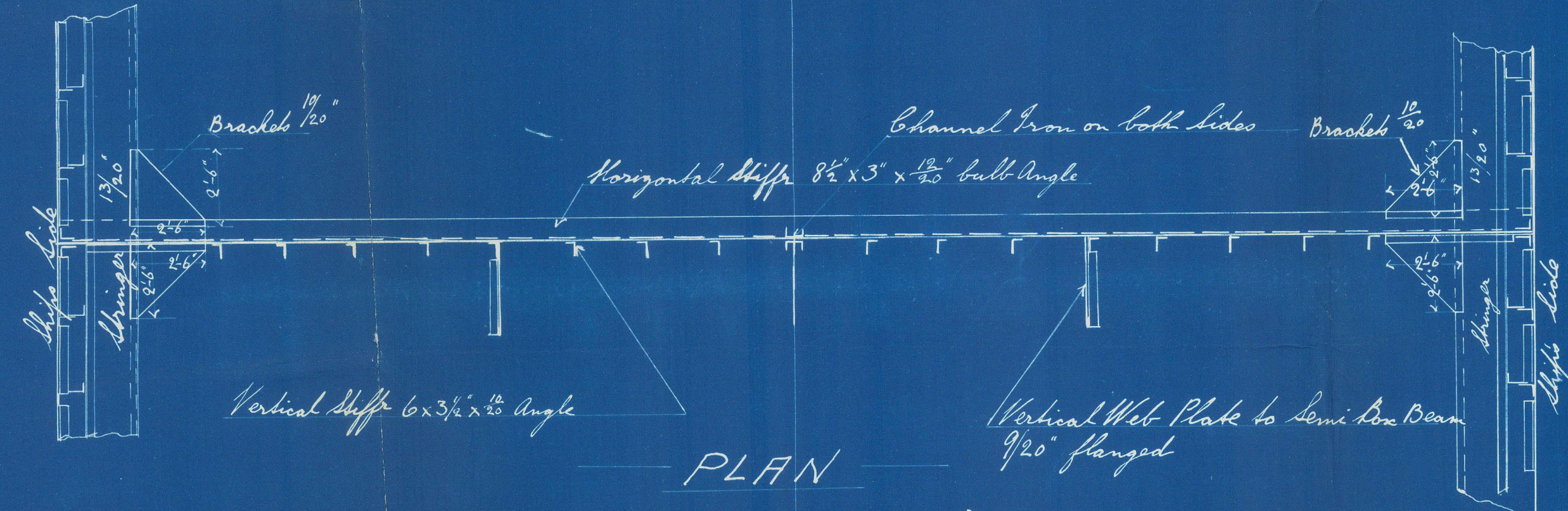
Bulkhead bottom plate 3/8" thicker in lieu of Brackets to Tank top.

ELEVATION



See A. Brown & Co. Ltd. Glasgow.

SECTION

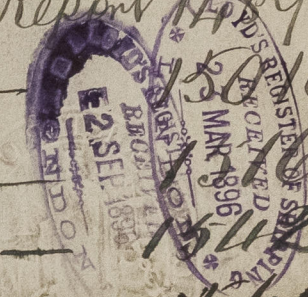


Bulkhead stiffened vertically by angles 6 x 3 1/2 x 10 1/2 spaced 30" apart.  
 --- horizontally by built angle 8 1/2 x 3 x 10 1/2, spaced 40" apart.  
 Horizontal Stiffener connected to shell by brackets.

15/6  
 25/3/96



S.S. "Nanagawa Maru" Glasgow Report 14840  
 S.S. "Hakata Maru" — do — 15019.  
 S.S. "Wakasa Maru" — do — 15113.  
 S.S. "Inaba Maru" — do — 15122.  
 S.S. "Bingo Maru" — do — 15666.



Bullheads

Henderson  
 390 1295-  
 1296, 7, 18.



© 2021

Lloyd's Register

GLS258 0599  
Foundation