

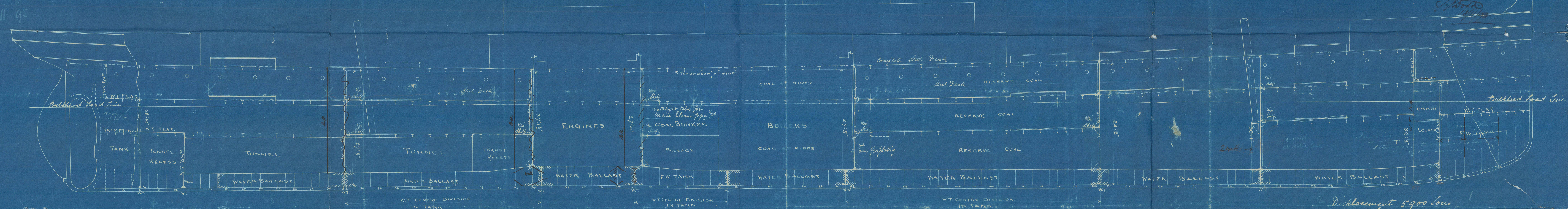
37242 27202
Nº 4-4-9-50-1

LONGITUDINAL SECTION

SCALE 1/4" = 1 FOOT

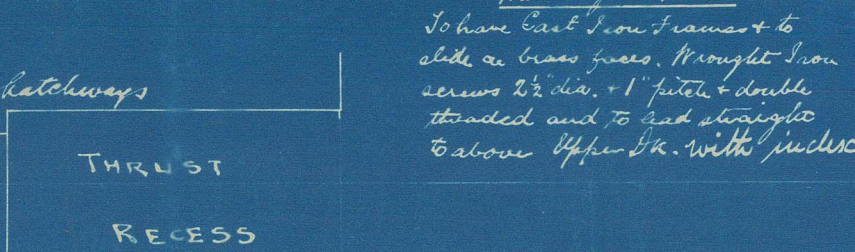
*Buildings
 30th Oct 1895*

As the tracing received from the Builders and approved by the Committee was also the tracing approved by the Board of Trade, the Builders desire to keep the original tracing and send this photo, which has been checked and found to be a true copy.



PLAN OF TUNNEL

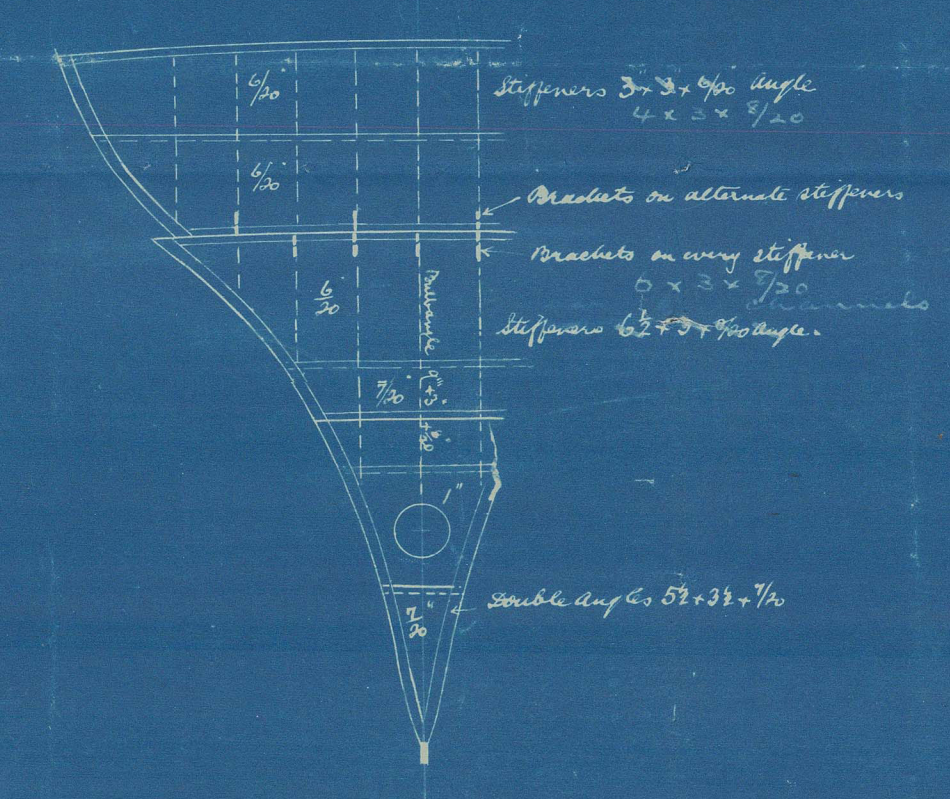
*Plating 7/16" stiffeners 4" x 3 1/2" x 9/16" 14' 0" apart and 3' 0" at ends
 2/30 rivets
 of plating*



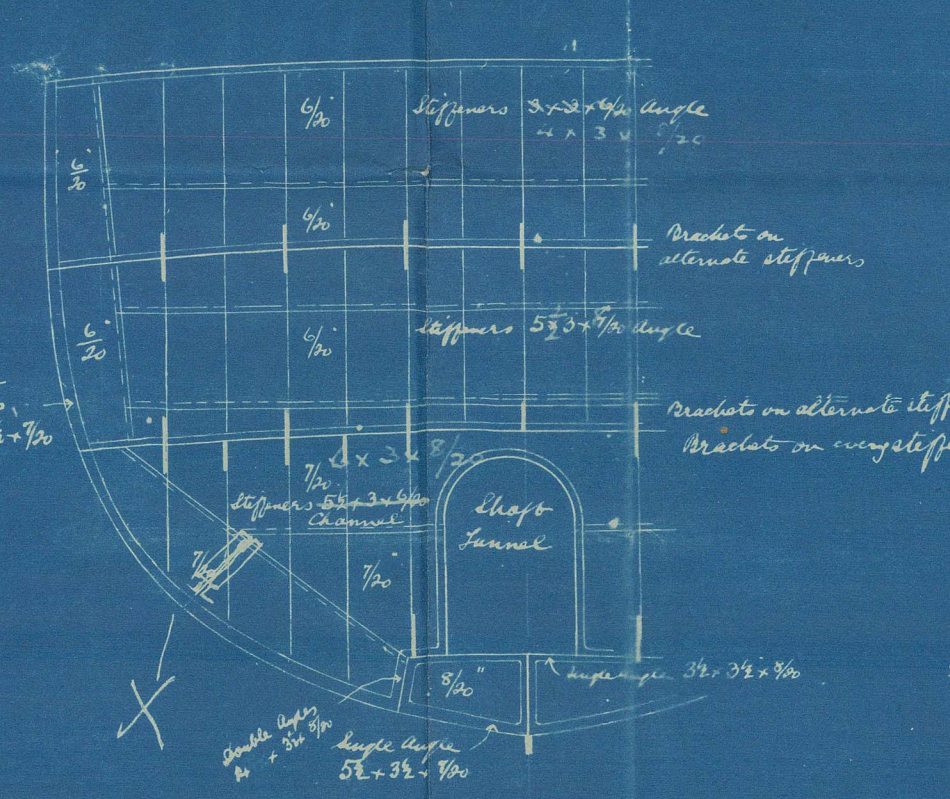
PLANS

PASSAGE

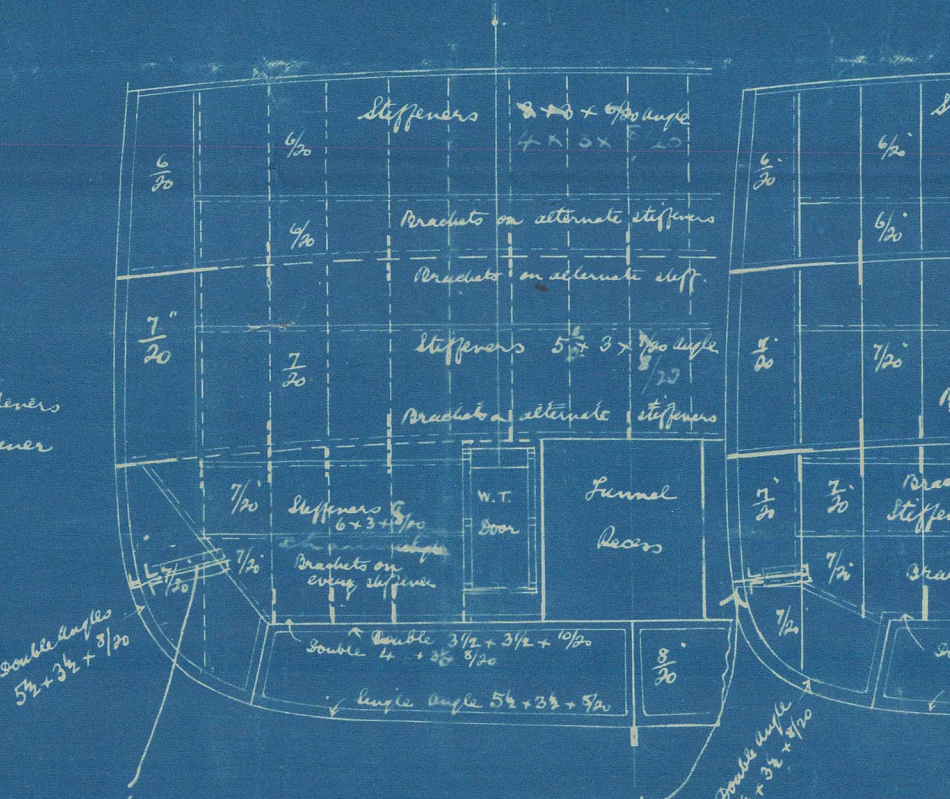
WT. BULKHEAD Nº 8
 LOOKING AFT



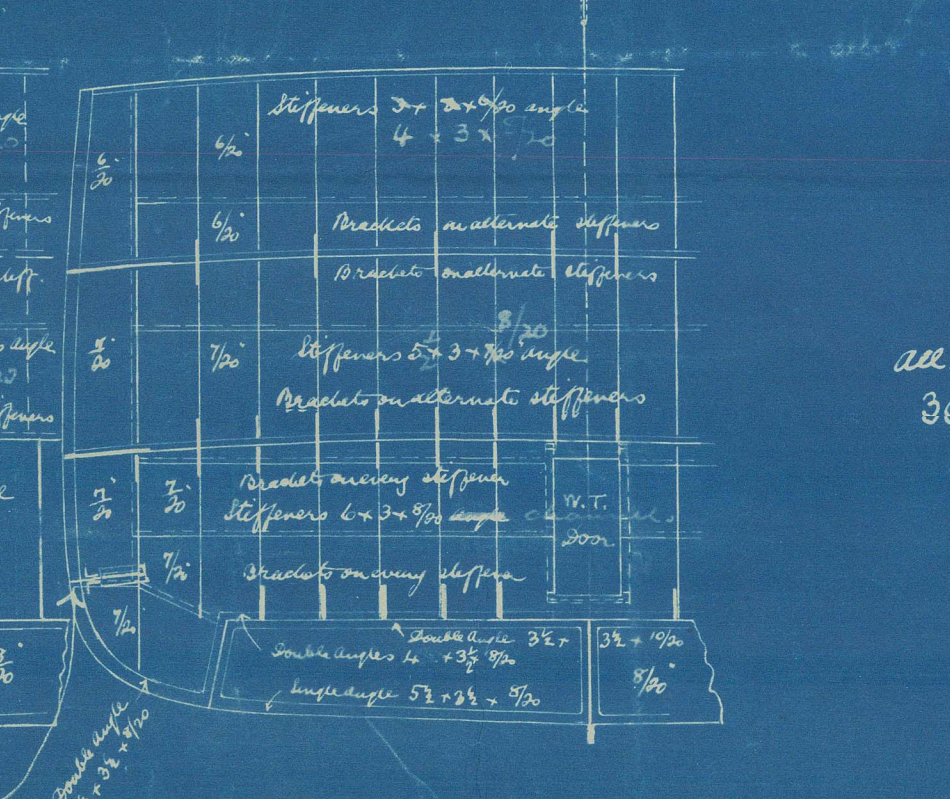
WT. BULKHEAD Nº 32
 LOOKING AFT



WT. BULKHEAD Nº 57
 LOOKING AFT

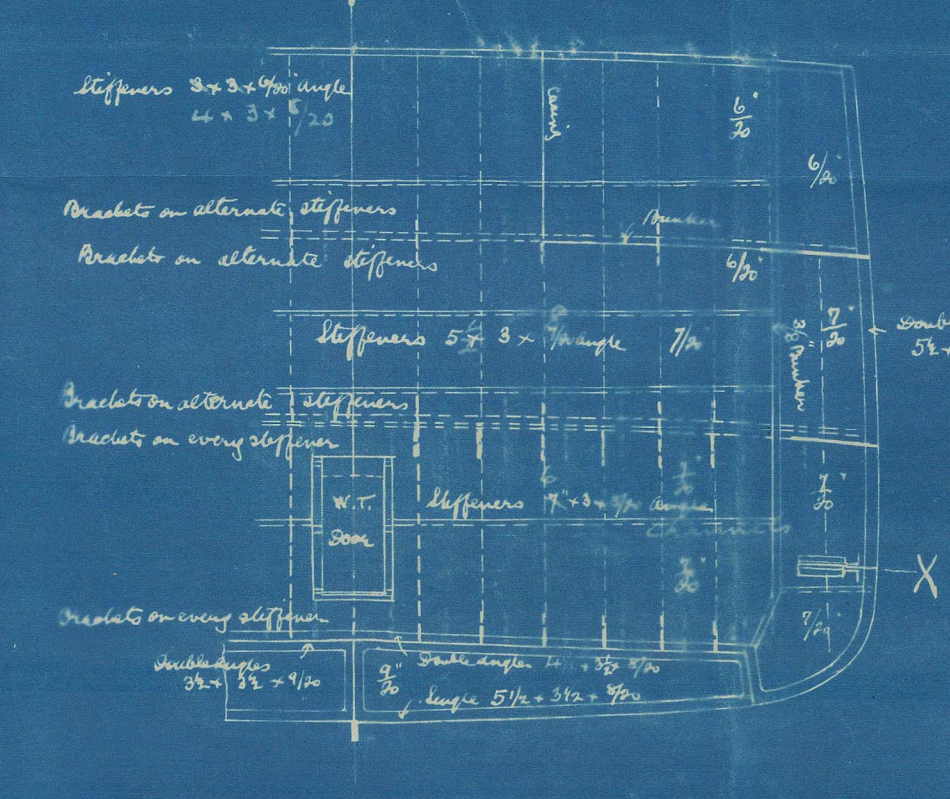


WT. BULKHEAD Nº 67
 LOOKING AFT

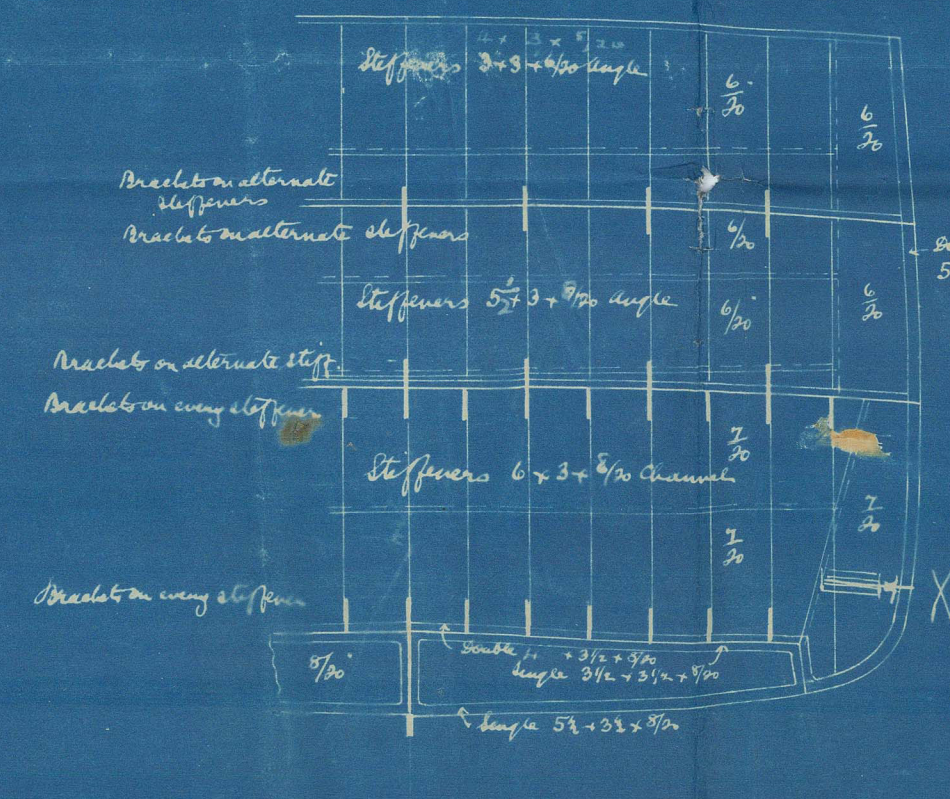


*all stiffeners
 30' apart*

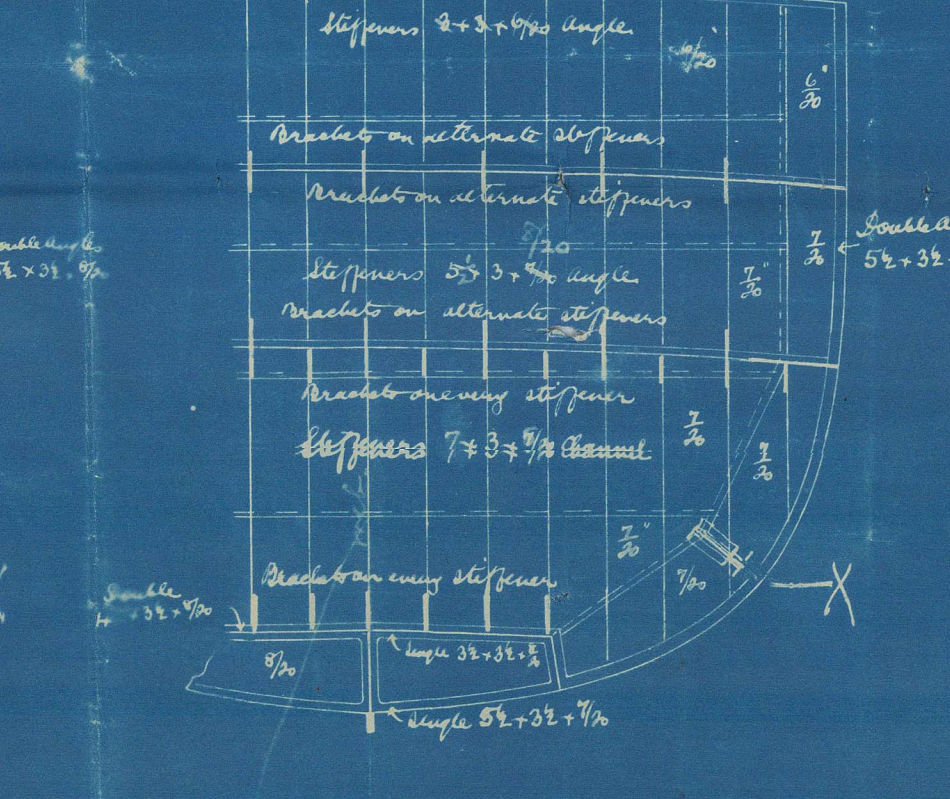
WT. BULKHEAD Nº 92
 LOOKING FORWARD



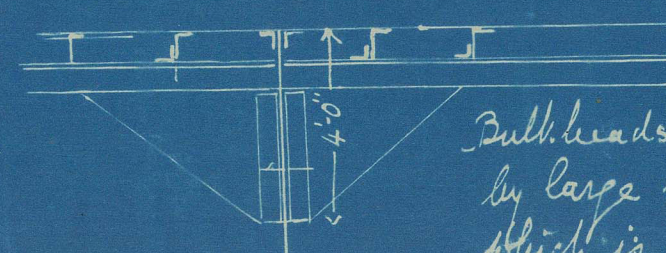
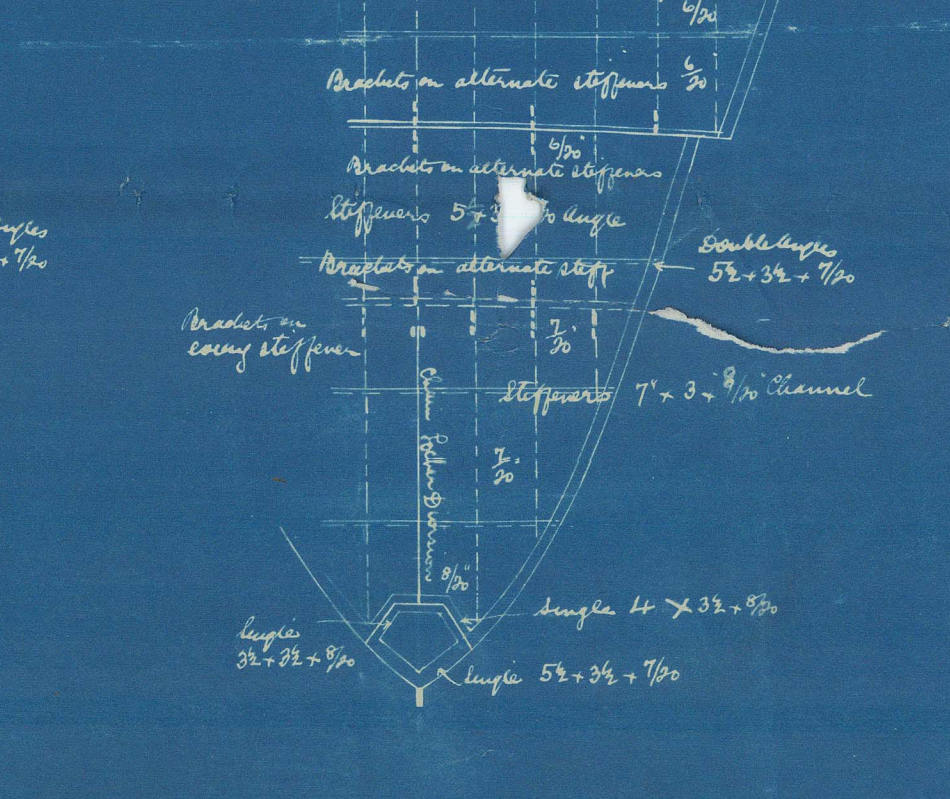
WT. BULKHEAD Nº 121
 LOOKING FORWARD



WT. BULKHEAD Nº 140
 LOOKING FORWARD



WT. BULKHEAD Nº 161
 LOOKING FORWARD



*Bulkheads would be stiffened at X
 by large brackets to bulk stringer
 which is not continuous through bulkheads*

Gls Rpt. No 14630.
La Plata

Bulkhead Sheffening
S.S. "Meinhold"
Gls Report 14413.
S.S. "Elbro" 14850.

9700-952519

Bulkhead Sheffening

15105-64450



© 2021

Lloyd's Register
Foundation