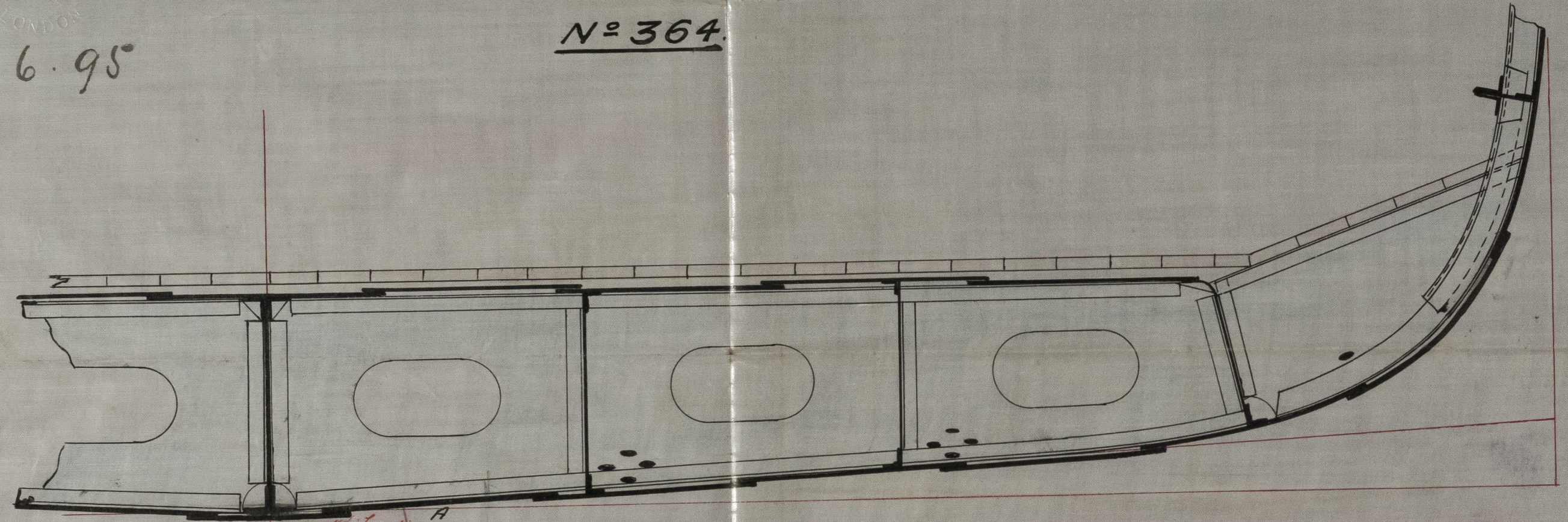




25.6.95

ALTERNATIVE PLAN OF FITTING KEEL PLATE.
INCREASING KEEL PLATE AND GARBOARD STRAKES
IN LIEU OF DOUBLING KEEL PLATE.

N^o 364.



6 1/2" Landing A
 about 5 1/4" x 1 1/20 for 1/2 length to 1 1/40 at ends
~~Butt Straps Double 1 1/20 outside & 1 3/20 inside for 1/2 length and 2/20 thicker~~
~~the plate as far as about 1/4 length all Double Rivetted~~
 Keel Plate 36 x 3 3/20 for 1/2 length to 1 1/20 at ends
 Butt Straps Double 1 1/20 outside & 1 3/20 inside
 for 1/2 length to 1 1/20 outside & 1 3/20 inside at ends
 all J. Rivetted

Butt Straps Double 1 1/20 inside & 1 3/20 outside for
 1/2 length tapering to 1 1/20 outside & 1 3/20 inside at ends

see letter.

25/6/95

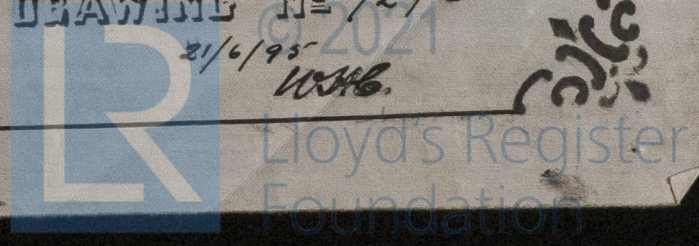
J. W
24/6/95

Alex^r Stephen & Sons.
SHIPBUILDERS & ENGINEERS
GLASGOW

DRAWING N^o 7276
21/6/95
10546.

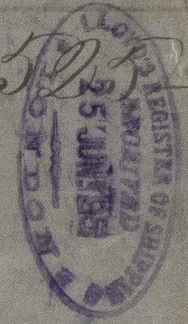
SCALE 1/2 INCH TO A FOOT

GLS255-012



S.S. "Meganitic" Glasgow Report N° 14.502

52/9/02



GLS255-0122

