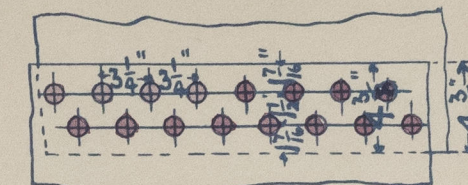
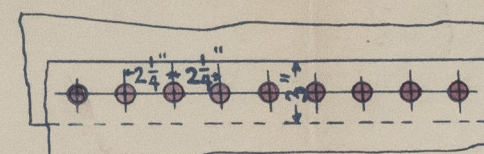
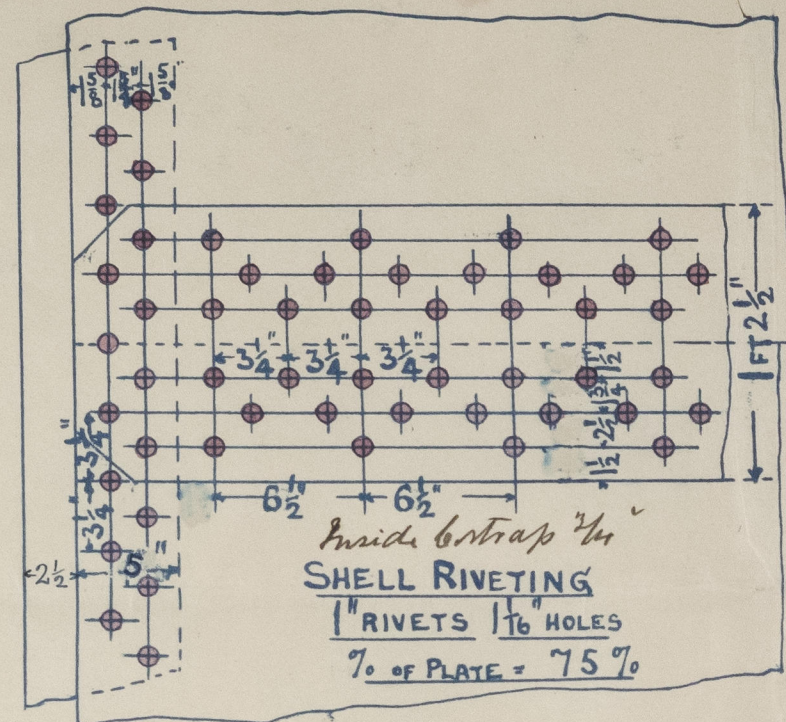
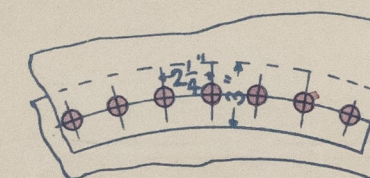
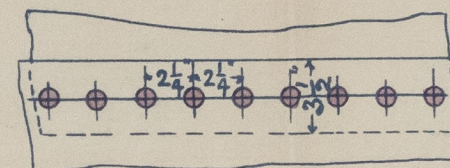


Rev. 24.9.95

SCALE $1\frac{1}{2}$ " ONE FOOT

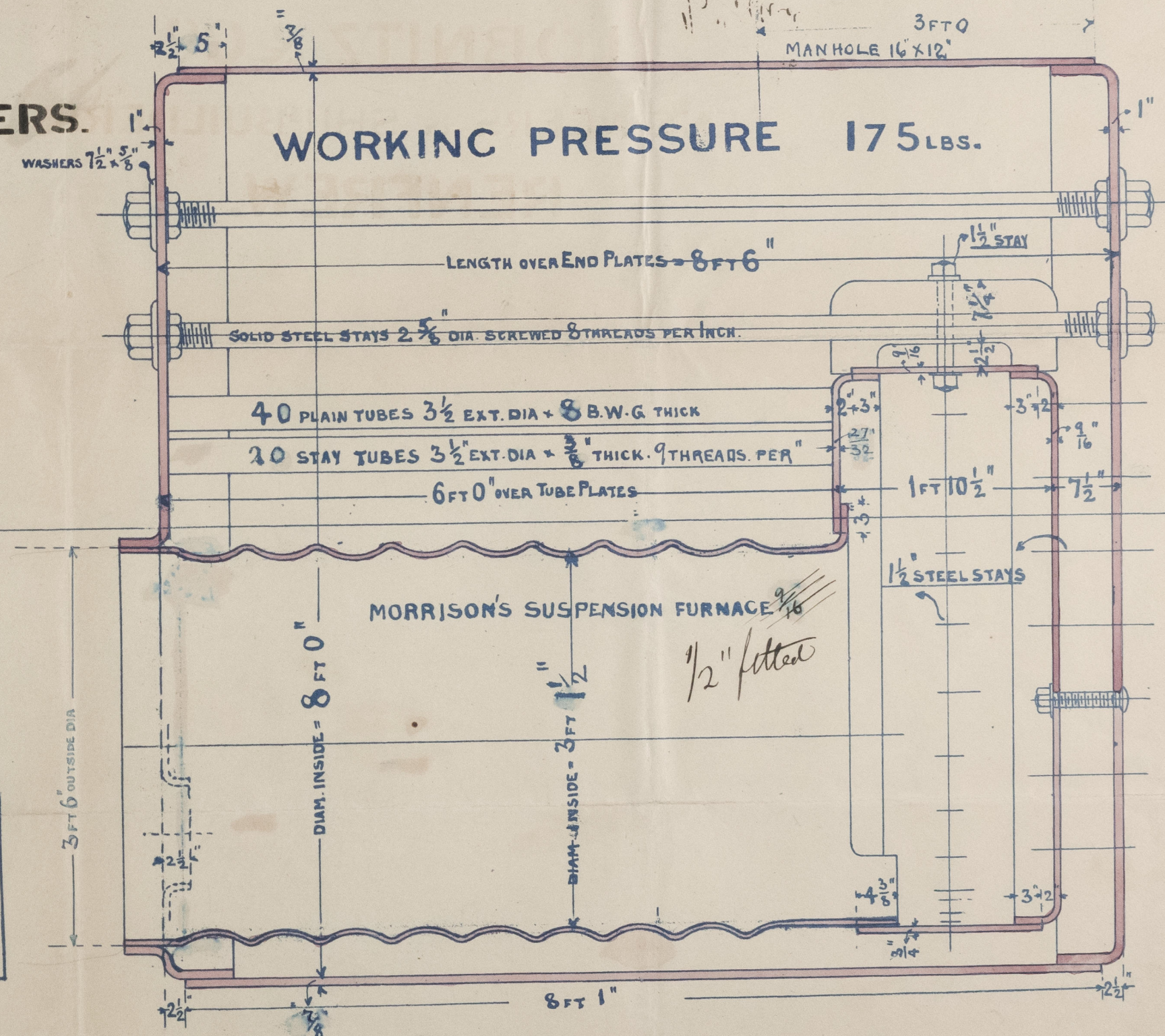
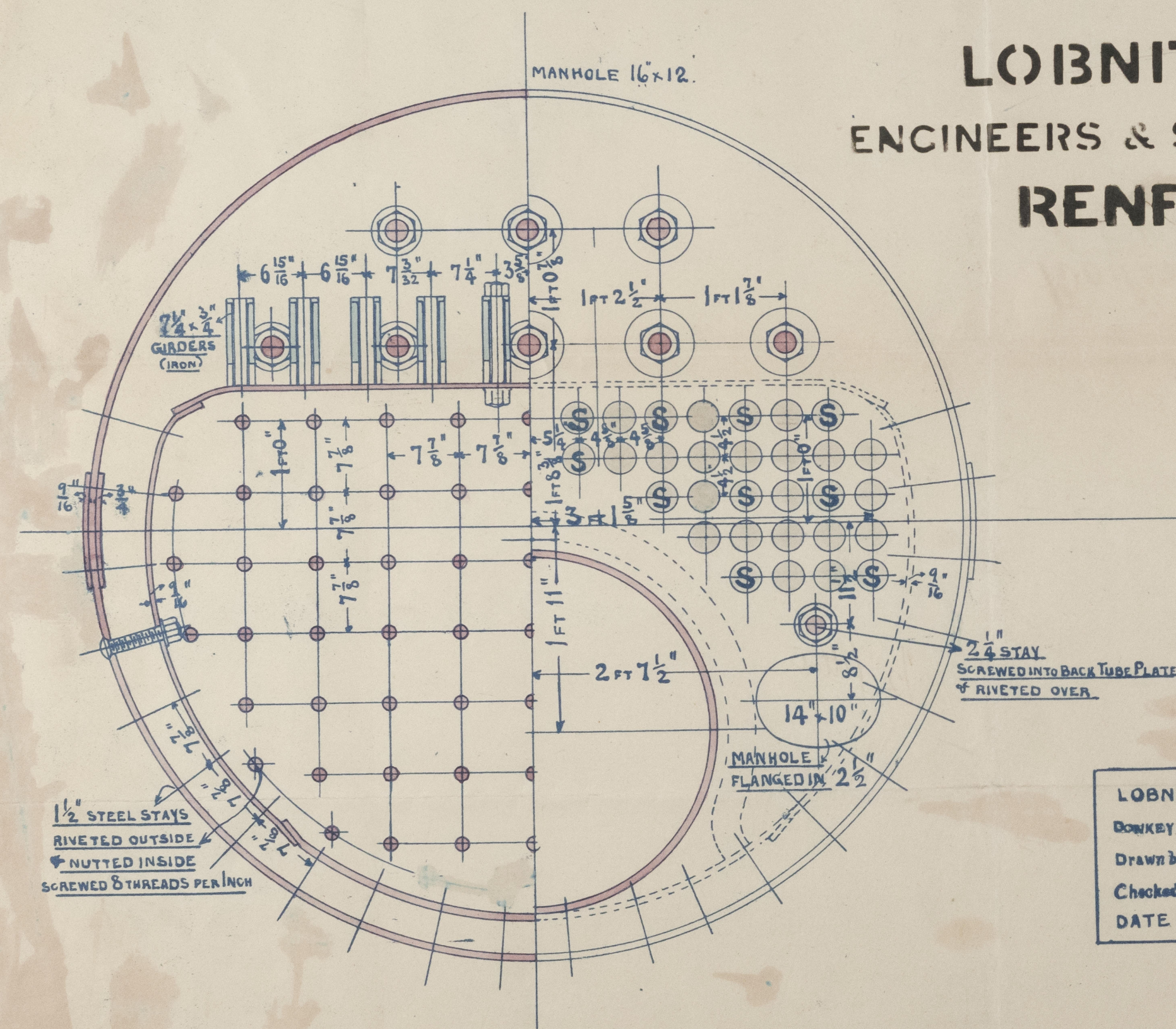


COMB. BOX RIVETINGS
 $\frac{7}{8}$ " RIVETS $\frac{15}{16}$ " HOLES



FURNACE RIVETING
 $\frac{7}{8}$ " RIVETS $\frac{15}{16}$ " HOLES

LOBNITZ & CO
ENGINEERS & SHIPBUILDERS.
RENFREW.



LOBNITZ & Co., RENFREW.
DONKEY BOILER No 435
Drawn by *J. J.*
Checked by *G. J.*
DATE 19th August 1895

SCALE 1" ONE FOOT

DONKEY BOILER No 435

LOFF

J.M.
13/9/95 © 2021
Lloyd's Register
Foundation
21.9.95

Boiler
S.S. "Okinawa Maru" Glasgow Report N° 4333
Lobnitz

433

