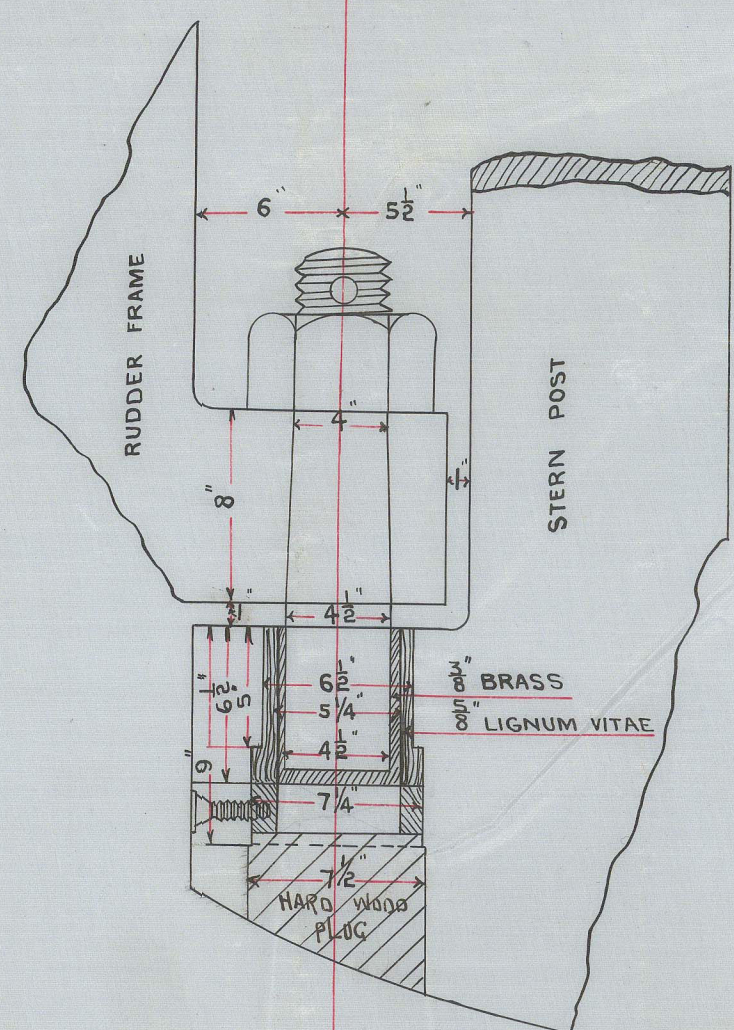
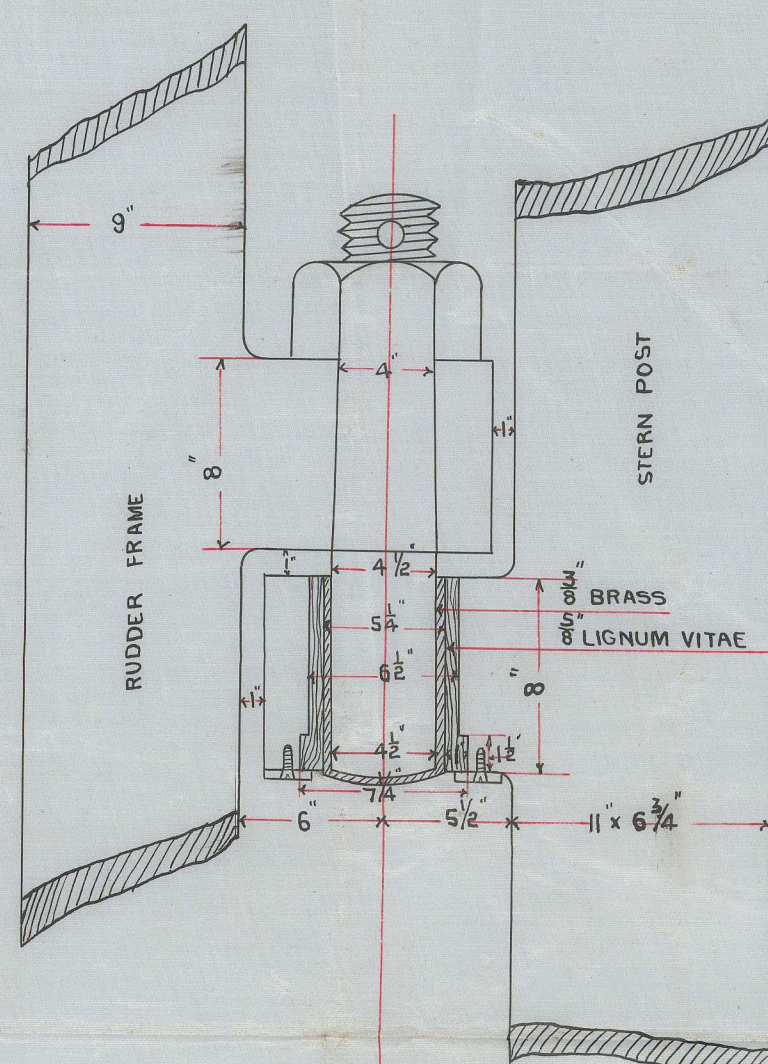


3" SCALE.



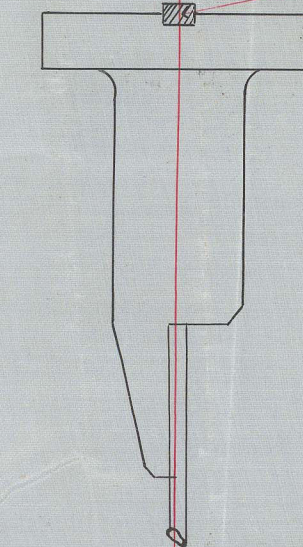
KEEL TO BE MADE TO MOULD

SCALES $\frac{1}{2}$ 1" \propto $\frac{1}{2}$ " = ONE FOOT.

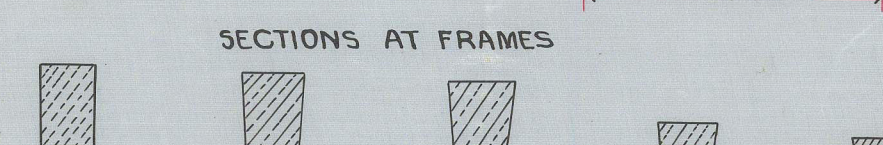


SCALE 1 INCH = 1 FT

KEY FITTED IN COUPLING



A technical drawing of a tapered pipe. The left end has a diameter dimension of $\frac{1}{4}$ inch. The right end has a diameter dimension of 8 inches. The drawing shows the profile of the pipe with a dashed line indicating the centerline.



13m
81694

