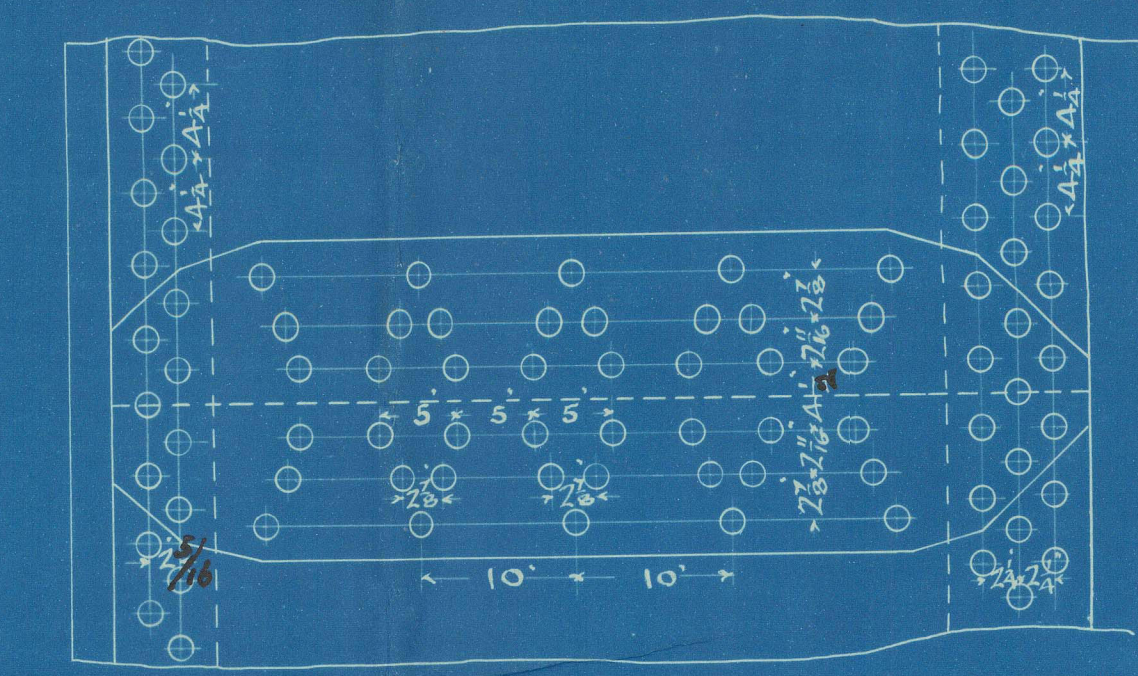
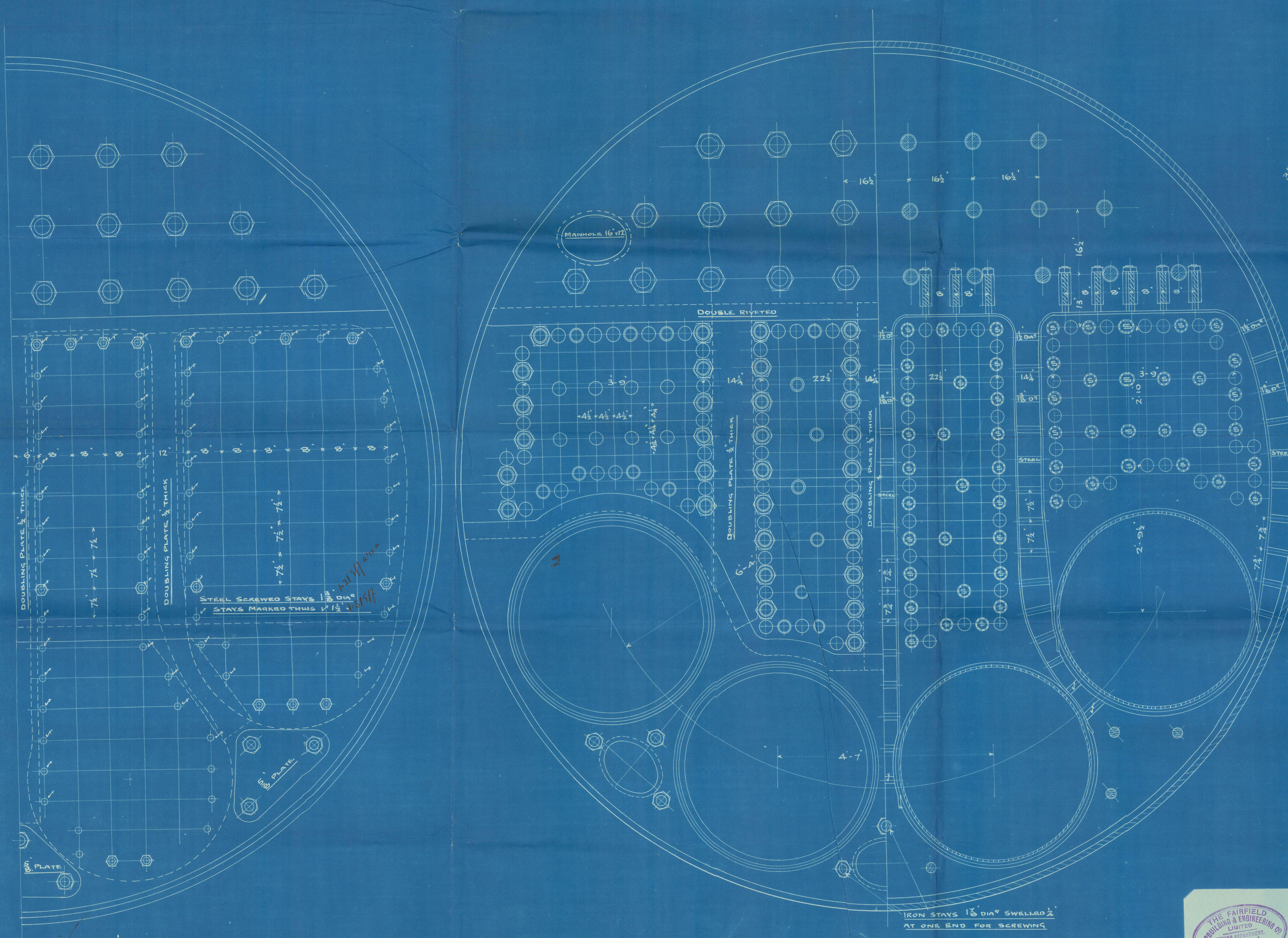
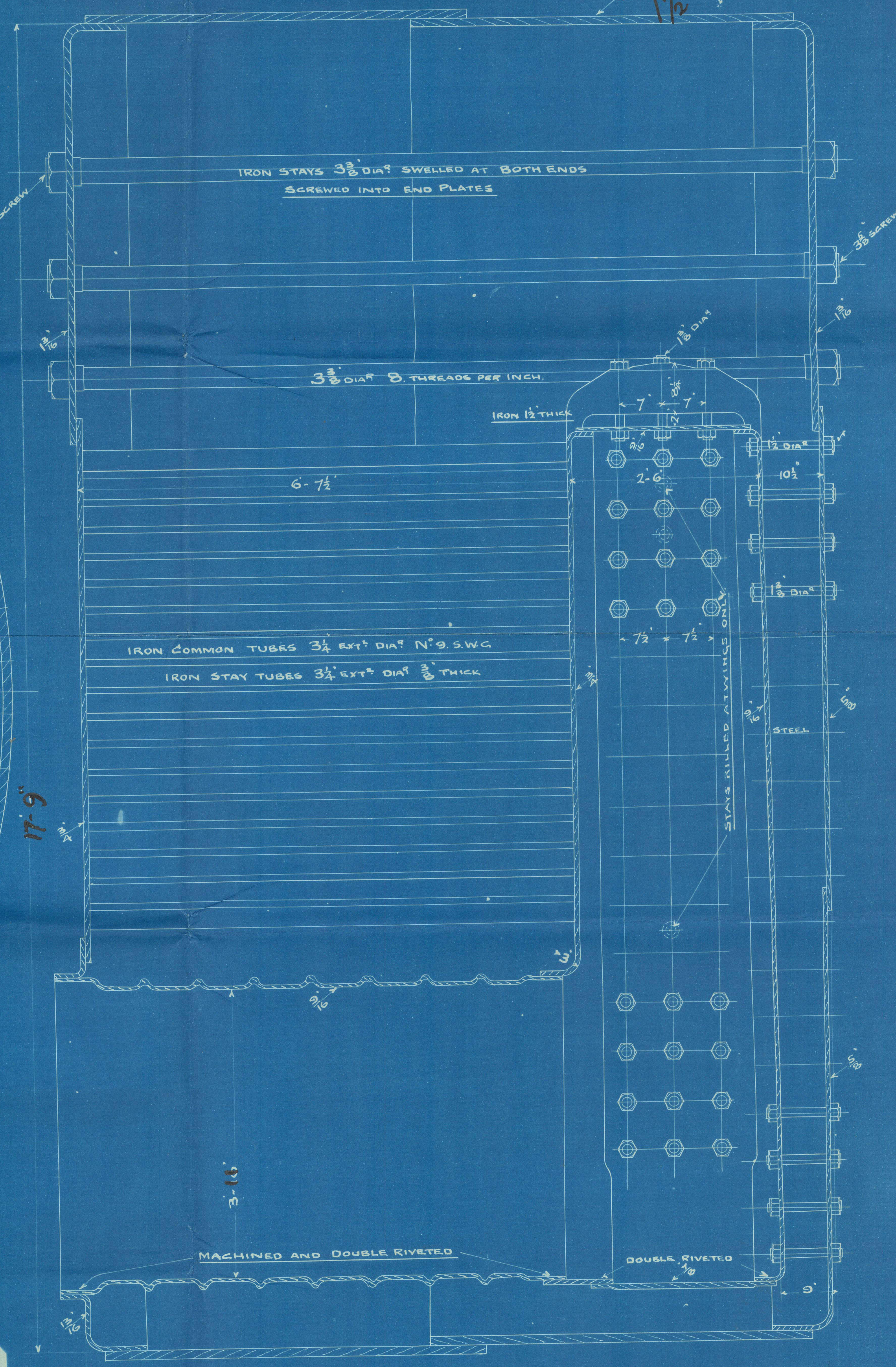


10-2-94



STEEL PLATES $\frac{1}{2}$ THICK
 DOUBLE STRAPS $\frac{1}{2}$ THICK
 ALL HOLES $\frac{1}{2}$ DIA FOR 18 RIVETS
 DRILLED IN PLACE
 MINIMUM STRENGTH OF SHELL PLATES 20 TONS



THE FAIRFIELD
 LIMITED
 MANUFACTURING & ENGINEERING CO.
 5-FEB-34
 GOVAN, GLASGOW

10' 0"
 BOILERS N° 377
 SCALE 1" = 1 FOOT
 WORKING PRESSURE 165 LBS. PER SQ. INCH



Boilers
'Arundel Castle"
Glasgow Report
No 13398.

4.5245-0152



© 2021

Lloyd's Register
Foundation