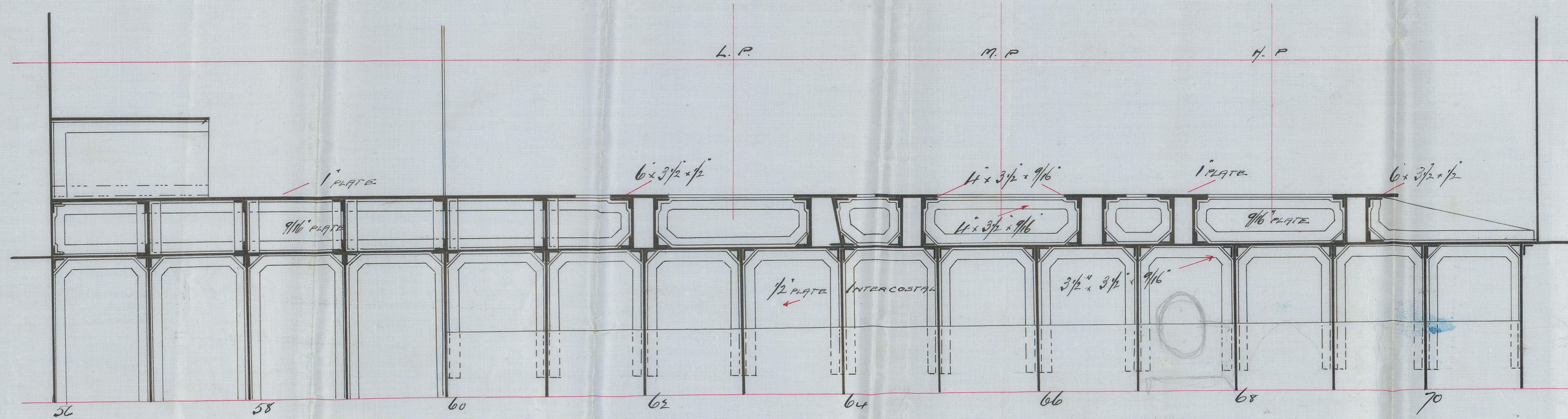
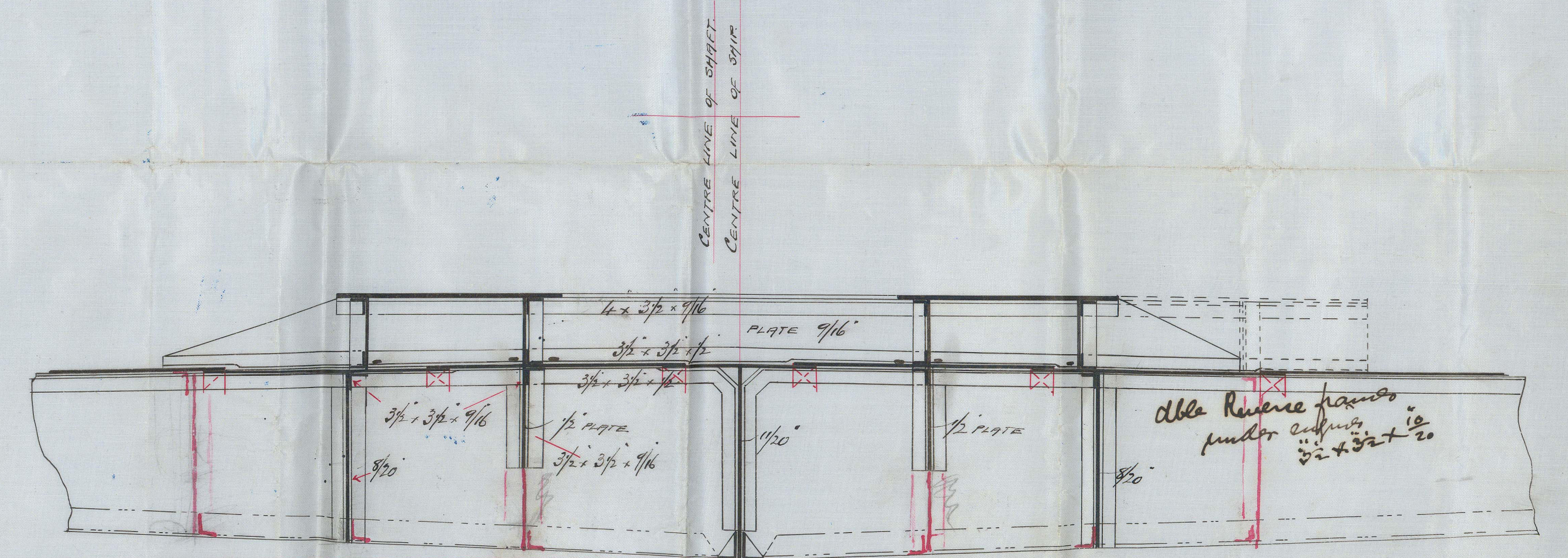
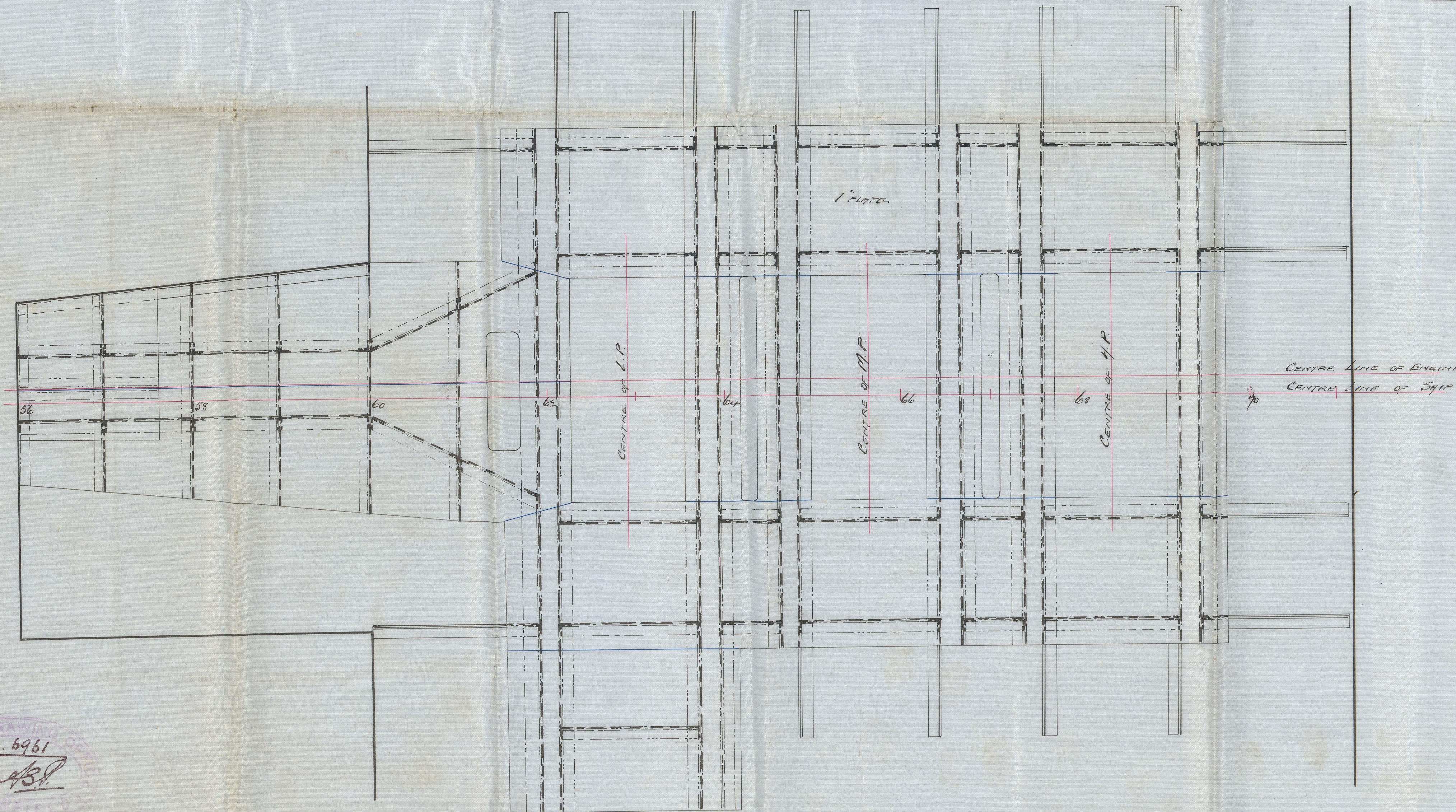


RECESS



ALL BELOW MACHINERY TO BE FLUSH RIVETED
AND WHERE POSSIBLE BY HYDRAULIC PRESSURE

S. S. No 377
ENGINE SEAT
Scale 1/2" = 1 Foot



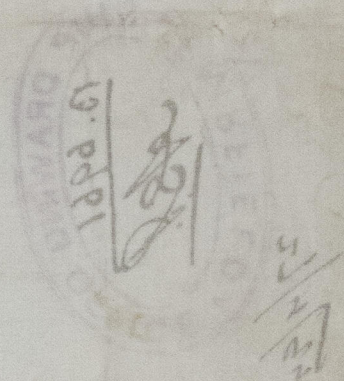
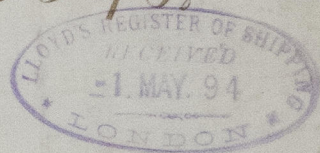
SECTION AT FRAME 65
LOOKING FORWARD



27/4/94

S.S. "Brunel Castle" Glasgow Report No 13398.

Engine test



24110-542579



© 2021

Lloyd's Register
Foundation