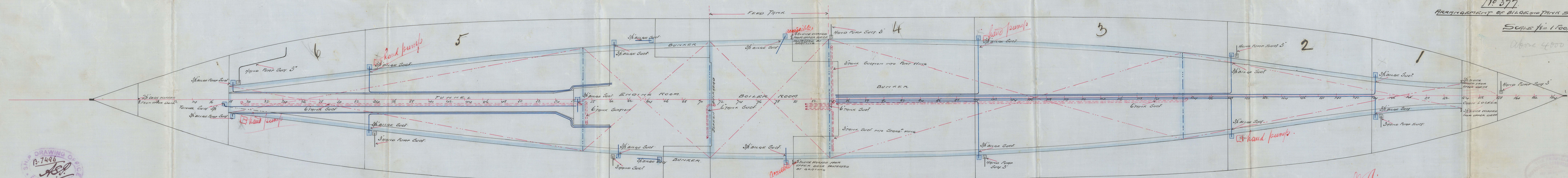
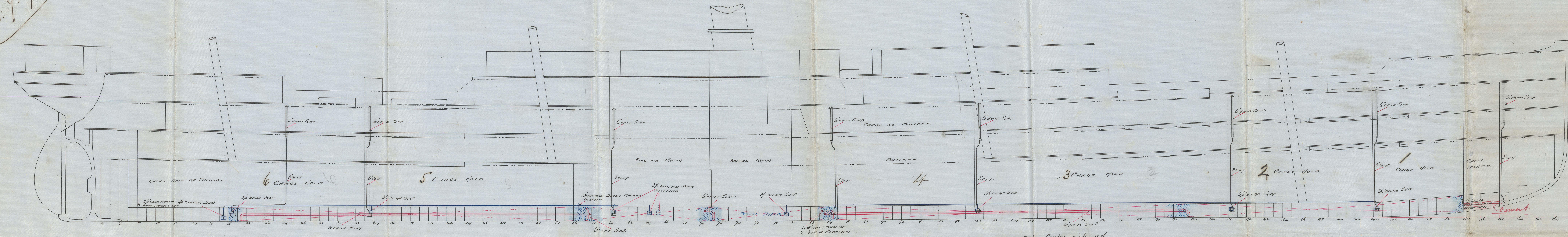


Ref. 1-1-94

8000194 "Steel Schooner" S.S.  
Special Report



No 372  
ARRANGEMENT OF BILGE AND TANK SUCTIONS

SCALE 1/2" = 1' 0"

Above 4000 tons

Note: Engine & Boiler Room Bilge Suctions  
 7- 3" Bilge Suct to 2 main engine (3" Bilge pumps (5m & R + 2m R.R.)  
 1- 8" Suct off 8" ballast pump (non return valve fitted)  
 1- 6" Circulating pump Suct  
 Pump Connections to Bilge System  
 2- 3" Main engine Bilge pumps  
 1- 4" General Service Pump  
 1- 4" Connection off 8" Ballast pump.

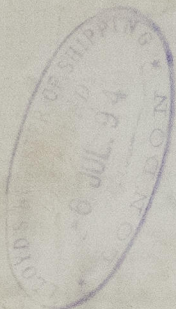
SHIP DRAWING OFFICE  
B.7496  
A.S.P.  
4/7/94

M.A.  
7-7-94

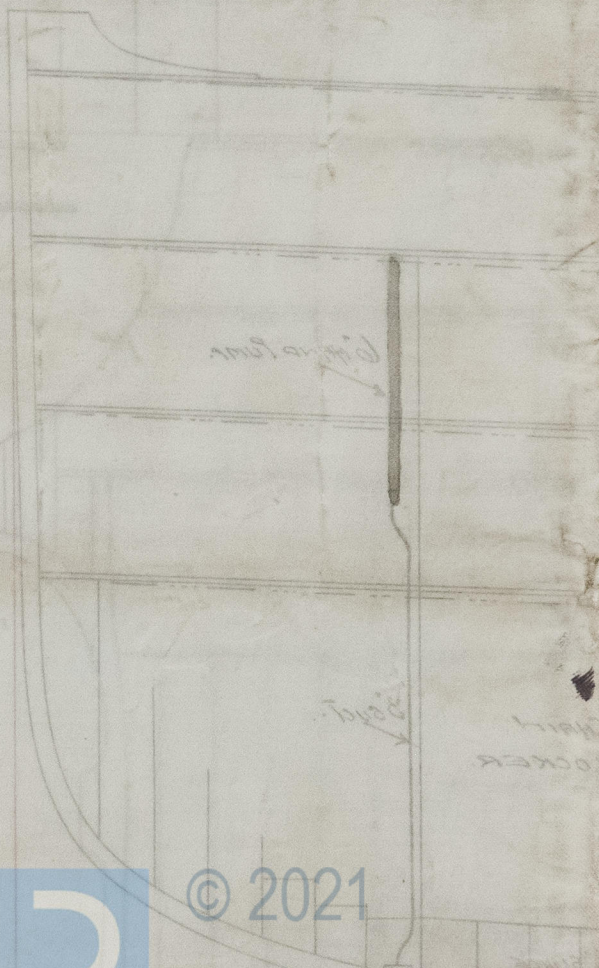
5-7-94



S.S. "Brundel Castle"  
Glasgow Report No. 13398



4LS245-0141



© 2021

Lloyd's Register  
Foundation