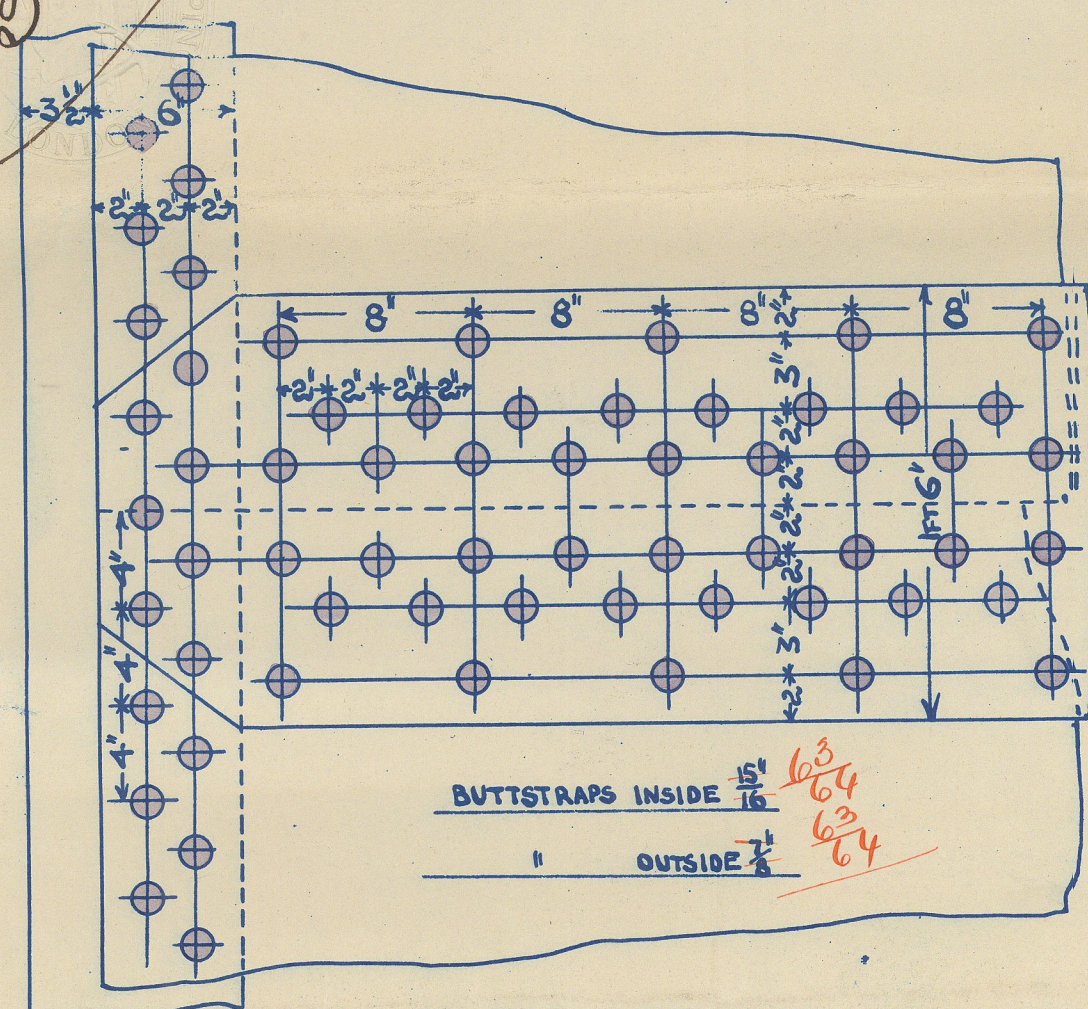
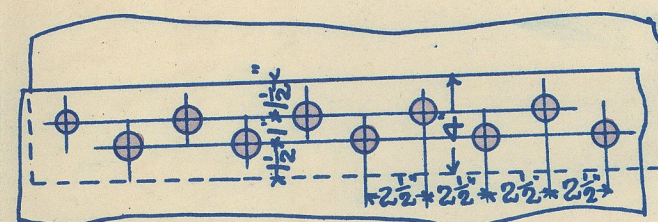


IRENFREW.

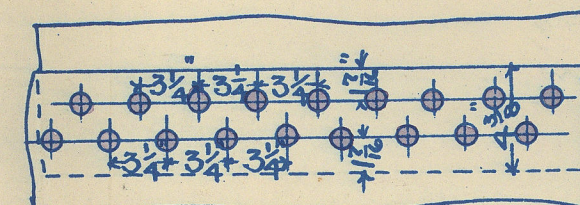
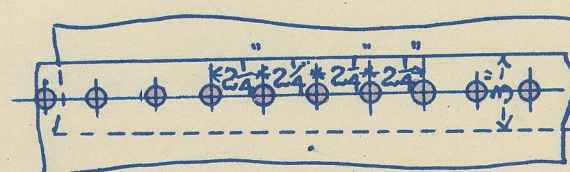
LOBNITZ & Co., RENFREW
Engines, No. 422.
Drawn by Louis Grosvenor
Checked by E. J.
DATE 1 June 1894.



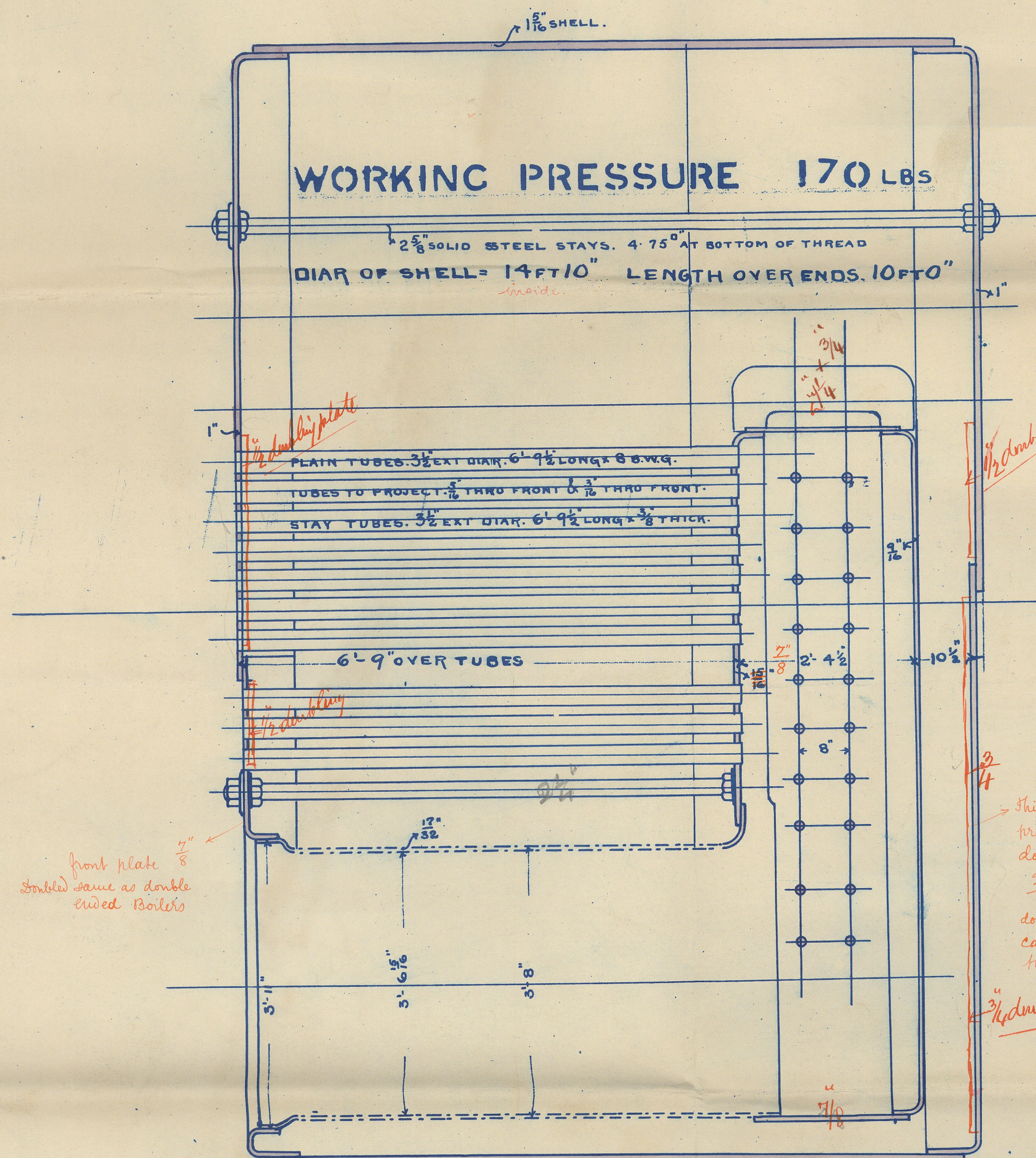
SHELL RIVETTING
1 1/4" HOLES 1 3/16" RIVETS
% OF PLATE = 84



END PLATE RIVETTING $1\frac{1}{16}$ " HOLES 1" RIVETS



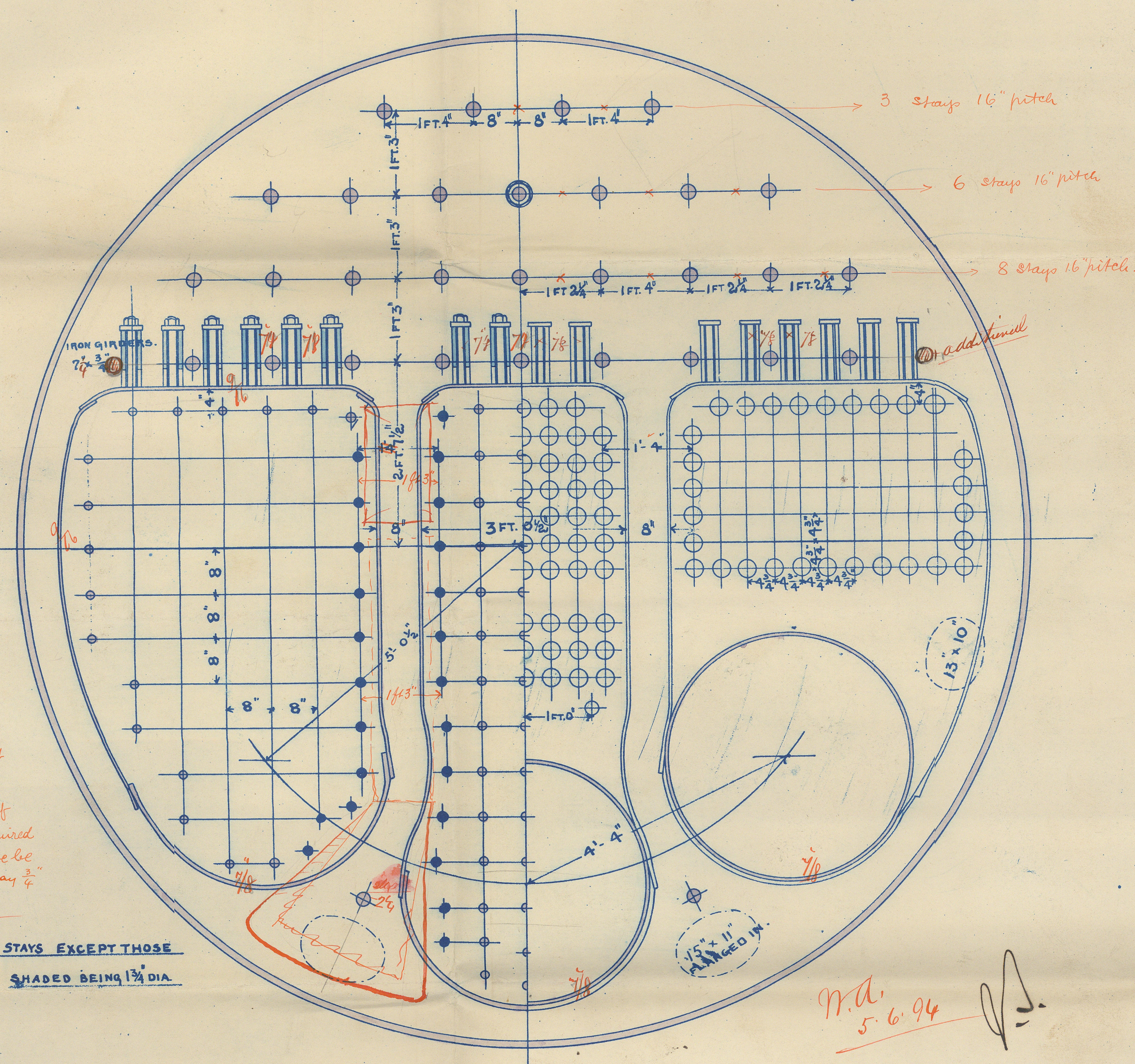
COMB. BOX RIVETTING $\frac{7}{8}$ " RIVETS $\frac{15}{16}$ " HOLES.



front plate $\frac{7}{8}$
Doubled same as double
ended Boilers

→ This Back plate
preferred without
doublings say
 $\frac{27}{32}$ thick or if
doubling is required
can the plate be
thinner? say $\frac{3}{4}$
No doubling plate

ALL 1 1/2" STAYS EXCEPT THOSE
SHADED BEING 1 3/4" DIA.



M.A.
5.6.94

LLOYD S PLAN

BOILER N^o 4 22

SCALE $\frac{3}{4}" = \text{ONE FOOT}$

OFF

ARRANGEMENT OF STAYS. &c. SAME AS DOUBLE ENDED BOILER

Boilers
S.S. "Santo Domingo"
Glasgow Report
13325,-



© 2021

Lloyd's Register
Foundation