

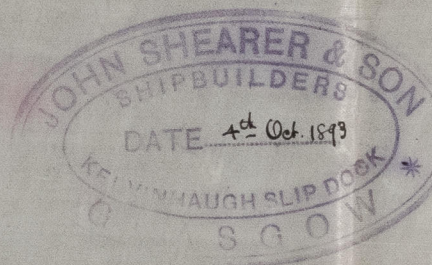
10.10.93.

# MIDSHIP SECTION

Nº 15

To CLASS 100 A.I. AT LLOYDS STEEL

SCALE  $\frac{1}{2}$  = 1 FOOT.



LENGTH B.P. 111'-0"  
BREADTH MOULDED 20'-0"  
DEPTH MOULDED 9'-0"

$\frac{1}{2}$  B = 10.00  
 $\frac{1}{2}$  C = 17.75  
D = 9.55  
37.30 1<sup>st</sup> NUMERAL  
109.32  
32976  
72922  
32976  
410000 2<sup>nd</sup> N°  
 $\frac{L}{D} = \frac{109.92}{9.55} = 11.5$   
 $\frac{L}{B} = \frac{109.92}{20} = 5.49$

## EQUIPMENT Nº 4278.

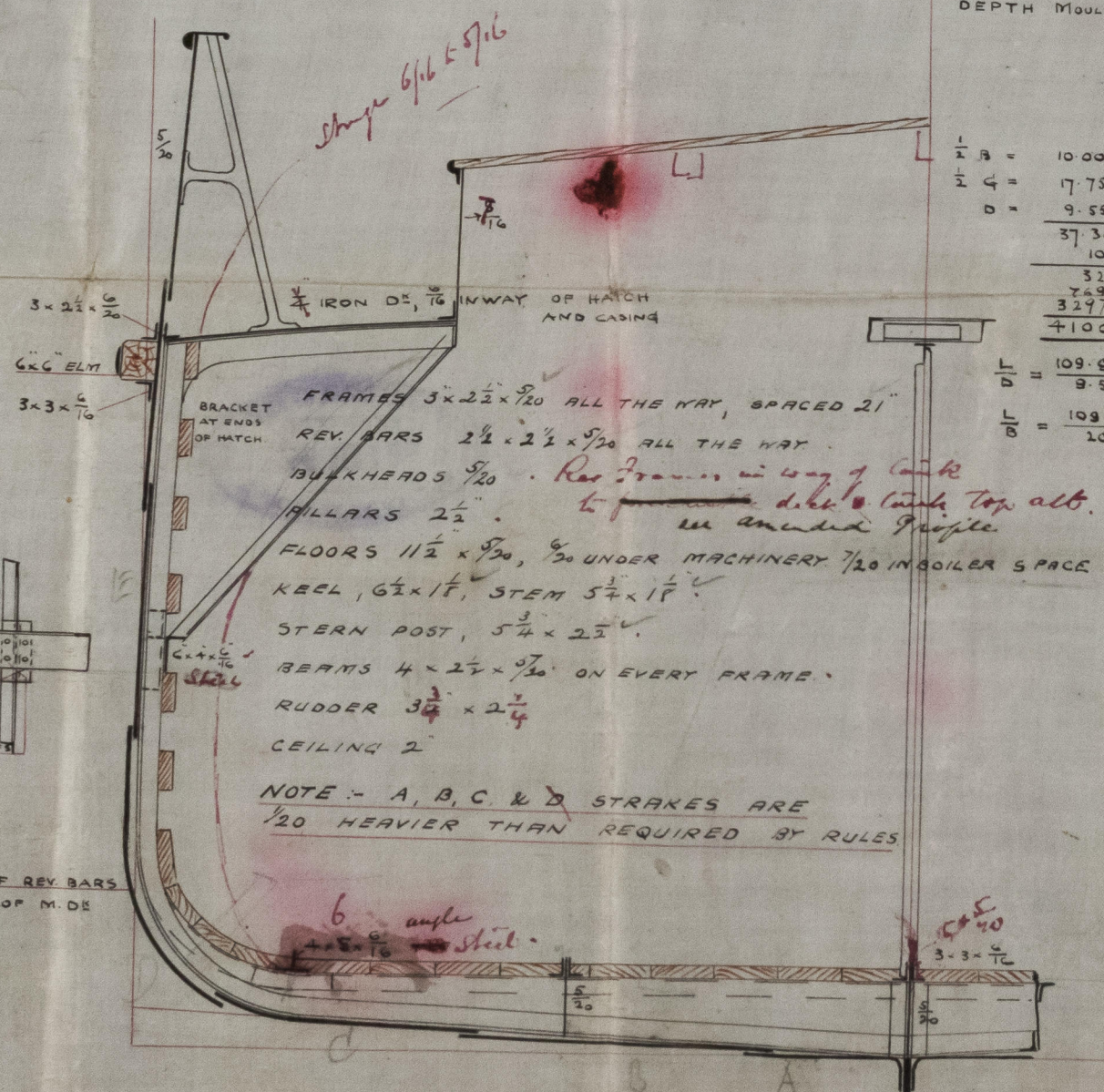
- 2 ANKER ANCHORS 14 CWT. EX. STOCK.
- 1 STREAM " 14 " " "
- 1 KEDGE " 5 " " "
- 120 FATH  $\frac{12}{16}$  STUD CHAIN CABLE.
- 45 "  $\frac{9}{16}$  STREAM CHAIN OR 2" STEEL WIRE.
- 75 " 6 TOWLINE
- 90 " 4 HAWSER.

LANDINGS SINGLE RIVETED EXCEPT GARBORD AND SHEERSTRAKE WHICH ARE DOUBLE RIVETED. ALL BUTTS LAPPED, TREBLE RIVETED FOR  $\frac{1}{2}$  L, EXCEPT SHEERSTRAKE, BILGE STRAKE, & GARBORD STRAKE, WHICH HAVE DOUBLE RIVETED BUTT STRAPS  $\frac{1}{20}$  THICKER THAN PLATES, FOR  $\frac{1}{2}$  LENGTH.

FLOORS CONTINUOUS CENTRE PLATE INTERCOSTAL.

33 x  $\frac{5}{16}$  D.R.  $\frac{7}{20}$  TO  $\frac{9}{20}$  S.R.  $\frac{7}{20}$  TO  $\frac{9}{20}$

A B & E strakes lapped treble riveted for  $\frac{1}{2}$  length  
A.C. & D strakes double riveted butt straps  
D strake treble riveted butt strap



© 2021

Lloyd's Register Foundation



S. S. Shames Castle "Glasgow Report"  
Apr 12 1884.  
Midship Section

