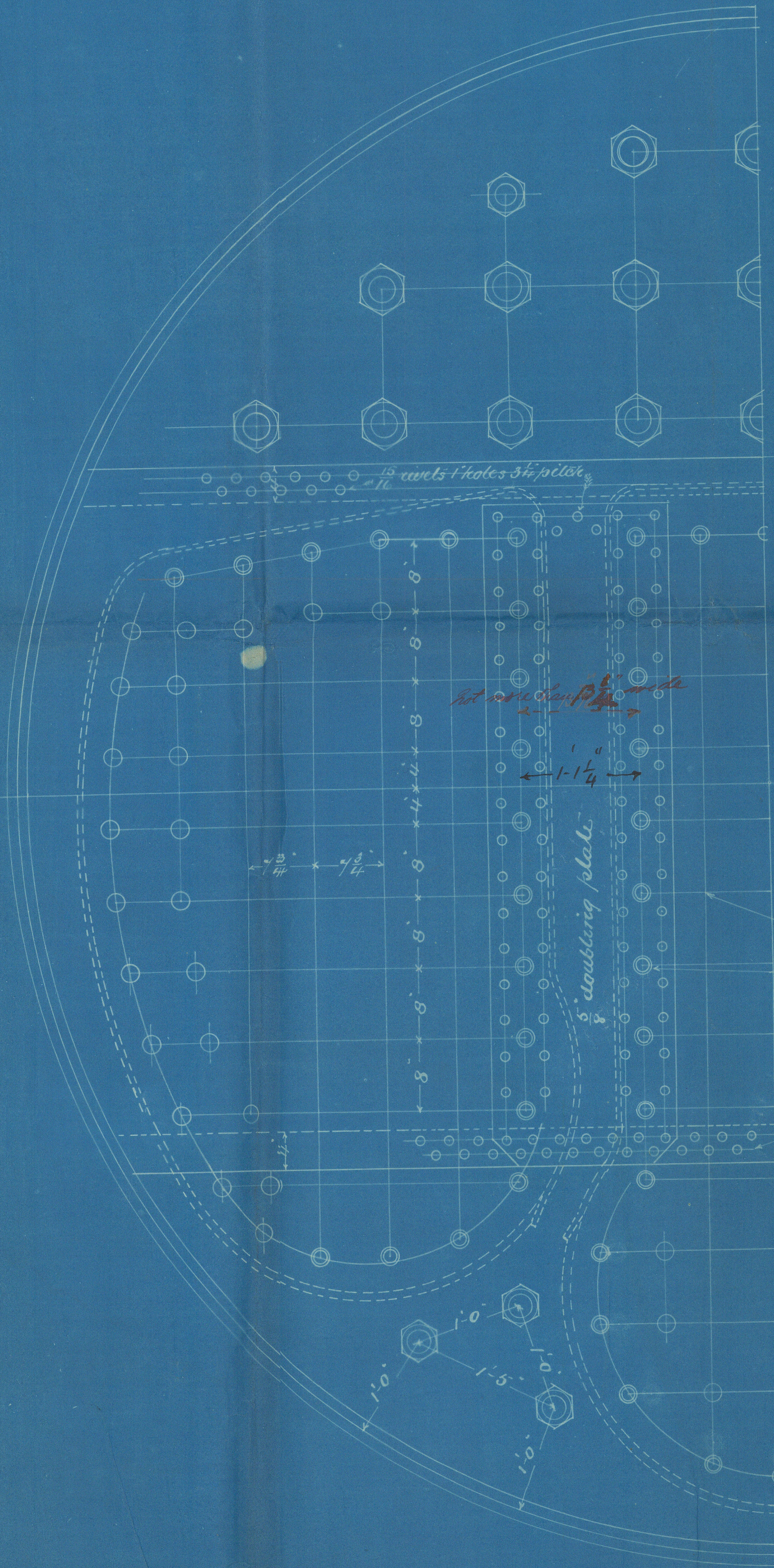
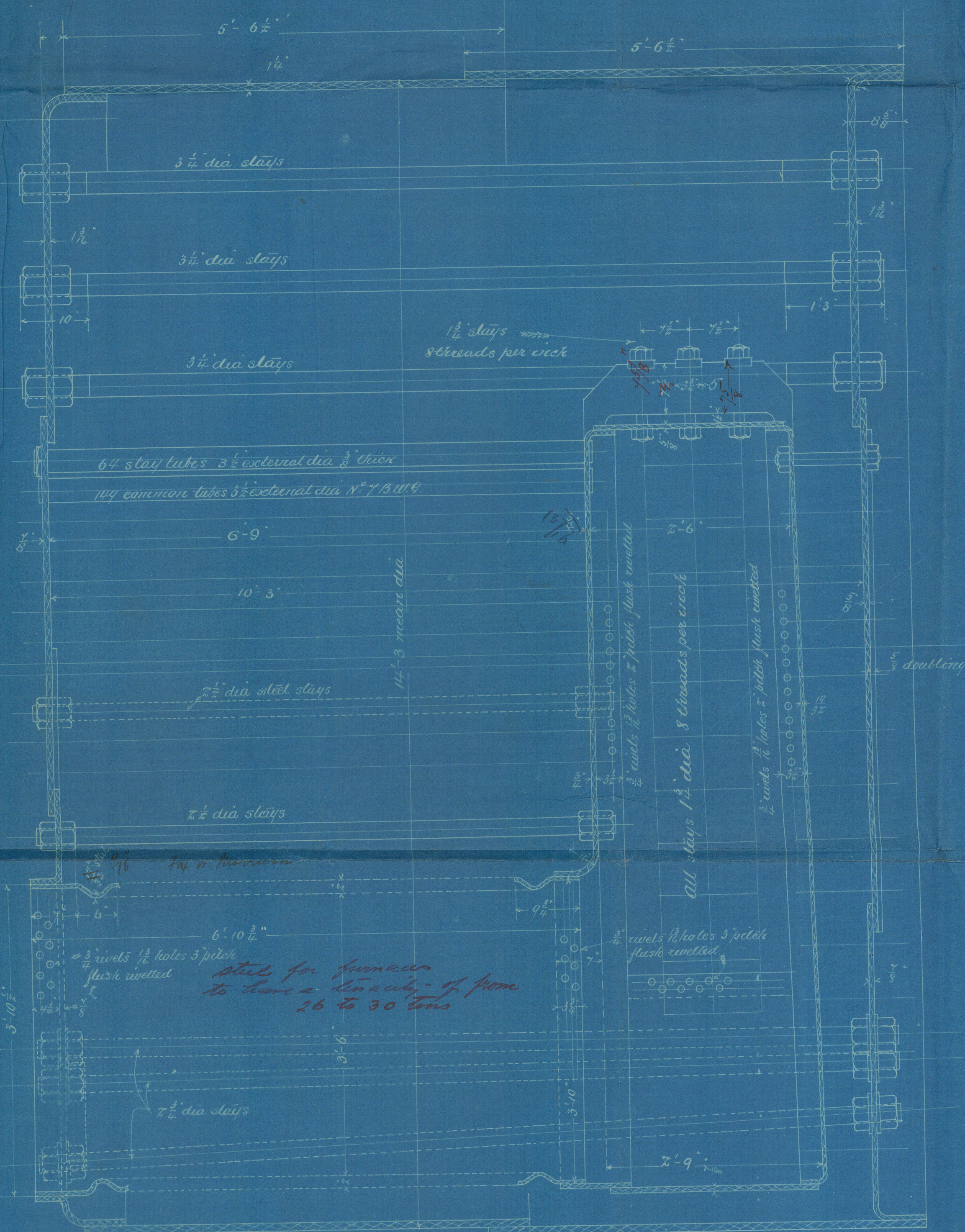
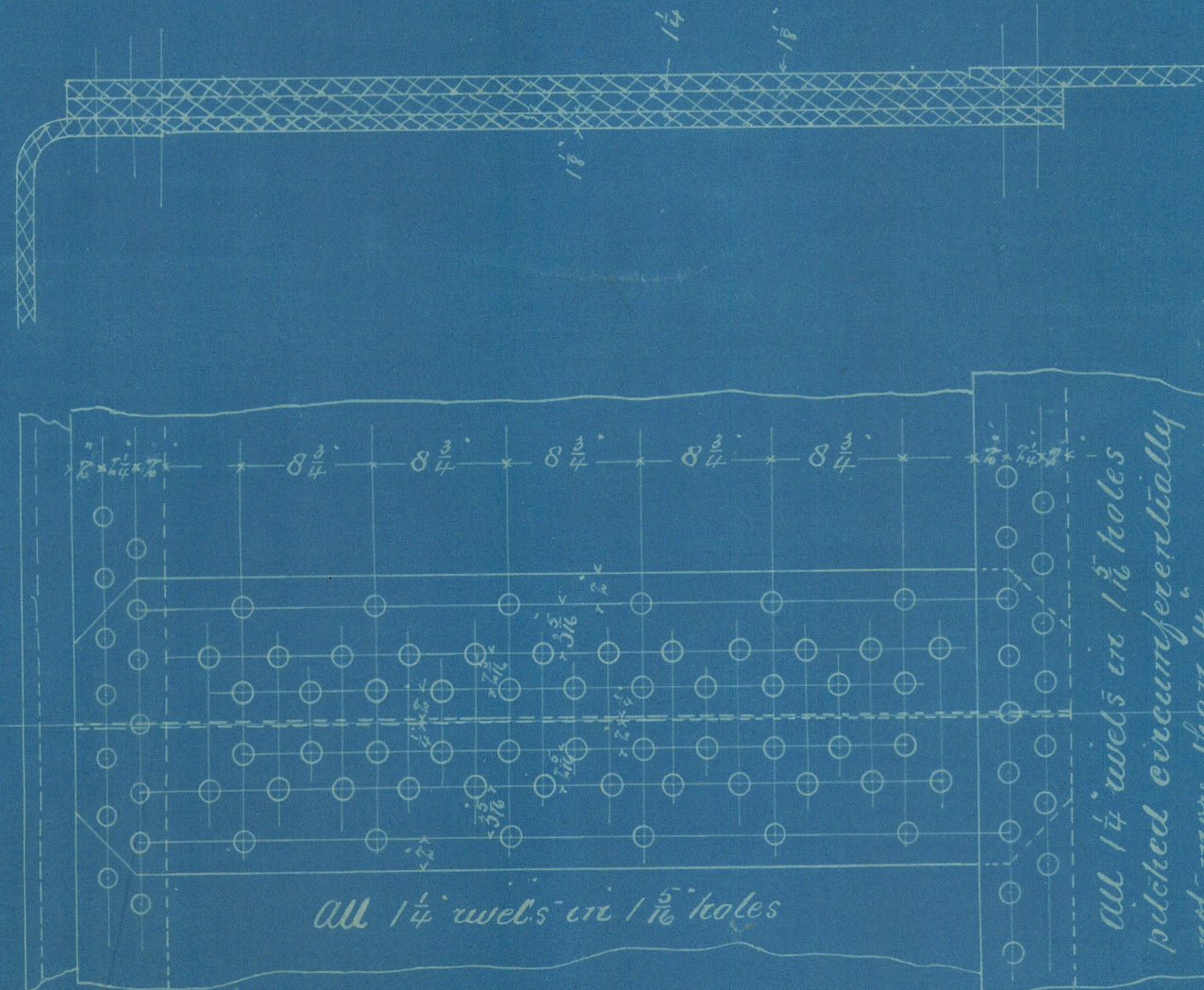
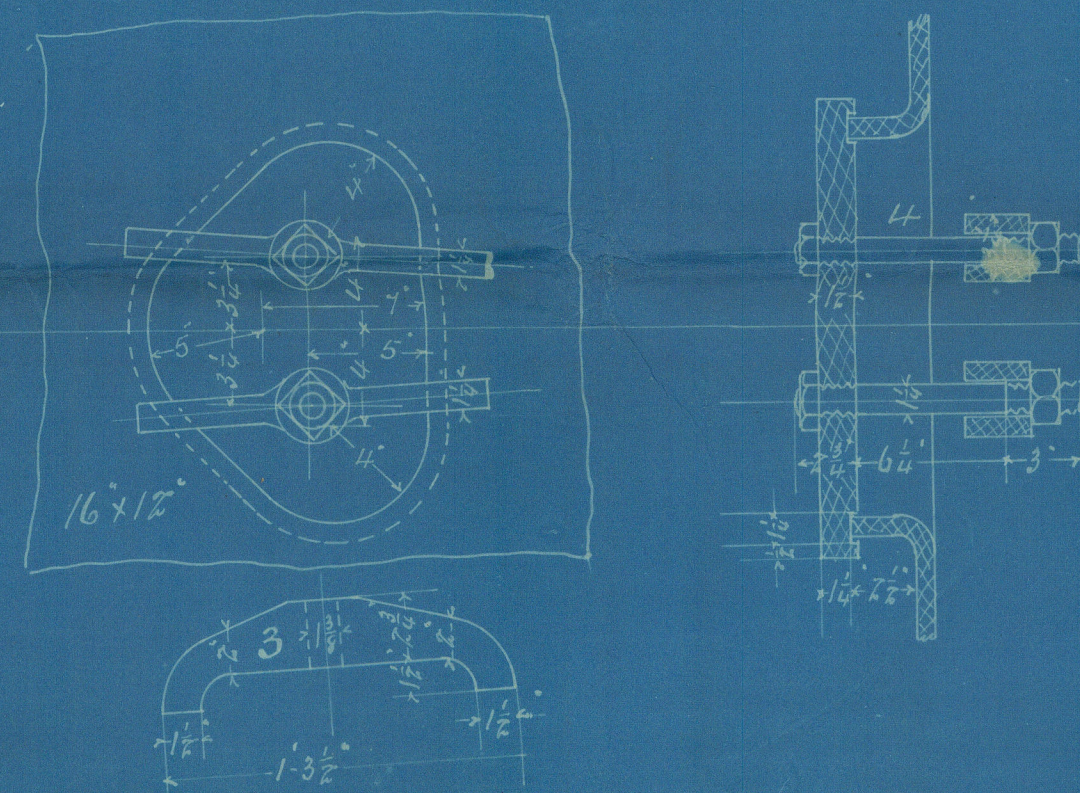
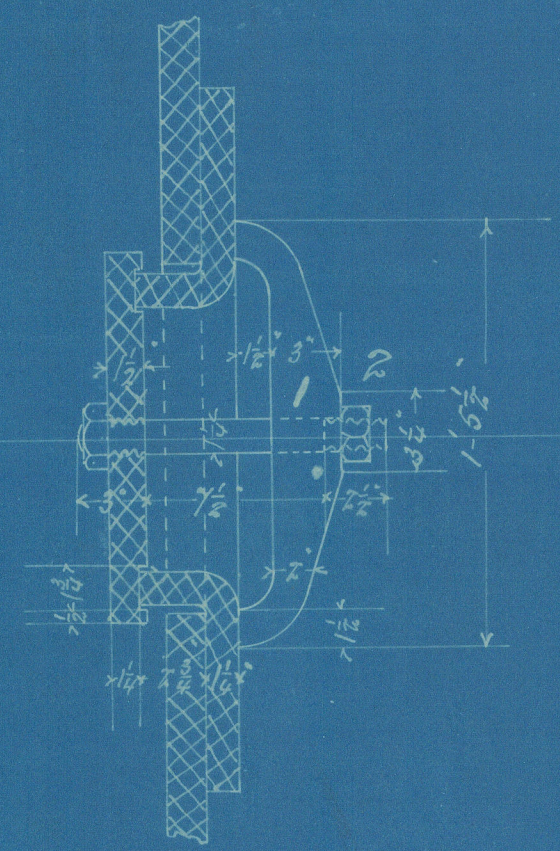
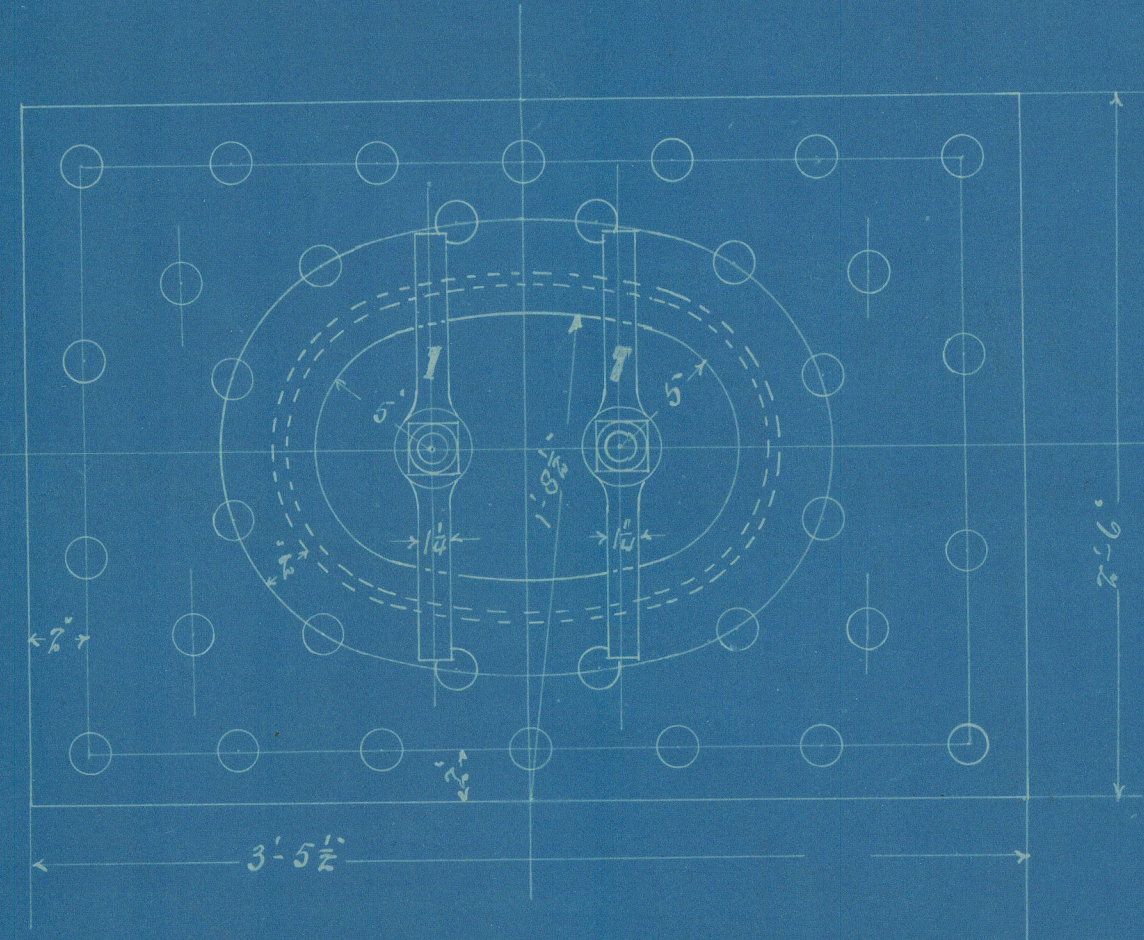
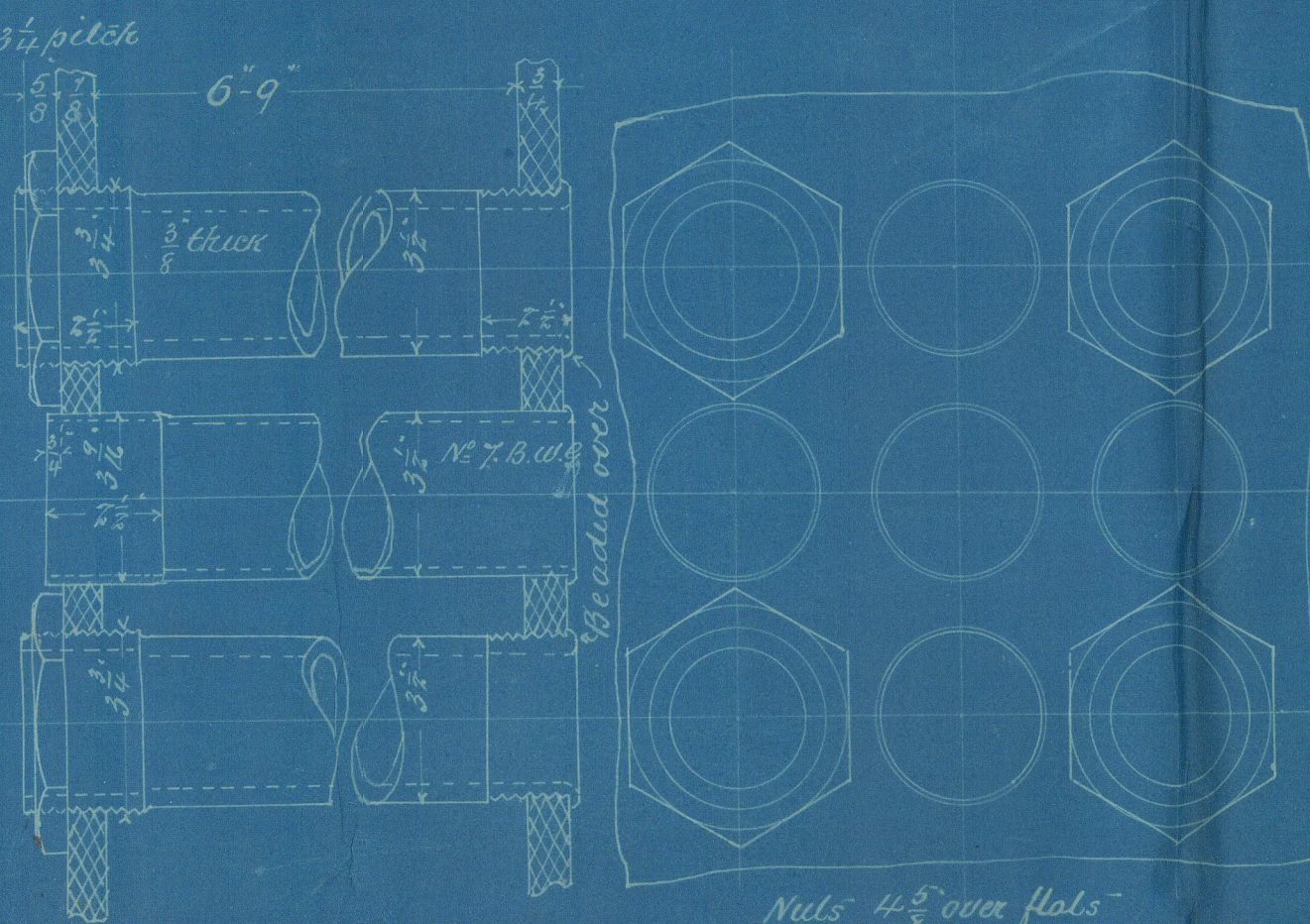


Rev. 18.7.93



Particulars of Boiler		
Heating surfaces	Tubes	1353
	Others	325.83
	Total	1678.83
Grate surface		63.135
Water line height above fire box		
Draught area thro' tubes		10.7
Ratio	Heating surface Grate surface	26.59
Ratio	Grate area Draught area thro' tubes	5.9
Working pressure		175
Test		300
Percentage of plate section at joint		
	Shell	55.0
	Head	68.8
Finished weight of boiler		
Weight of water in boiler to water line		

All stays in comb^d chamber backs to be 1 1/2" dia, except stays in rear wall which are to be 2" dia. 8 threads per inch.

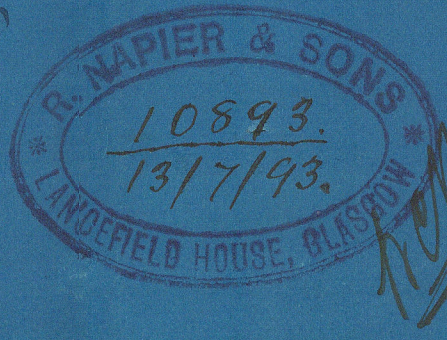


Modifications noted and embodied in working drawings. 25/7/93

437 Main Boiler

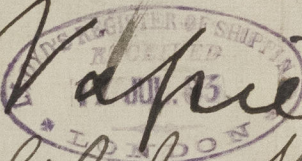
Scale 1/12" = 1 foot

3469



GLS239-0033

Bailers
437


Napier
S. S. John Williams
Glasgow Report
No. 12445.-



© 2021

Lloyd's Register
Foundation