

24220

N<sup>o</sup> 437

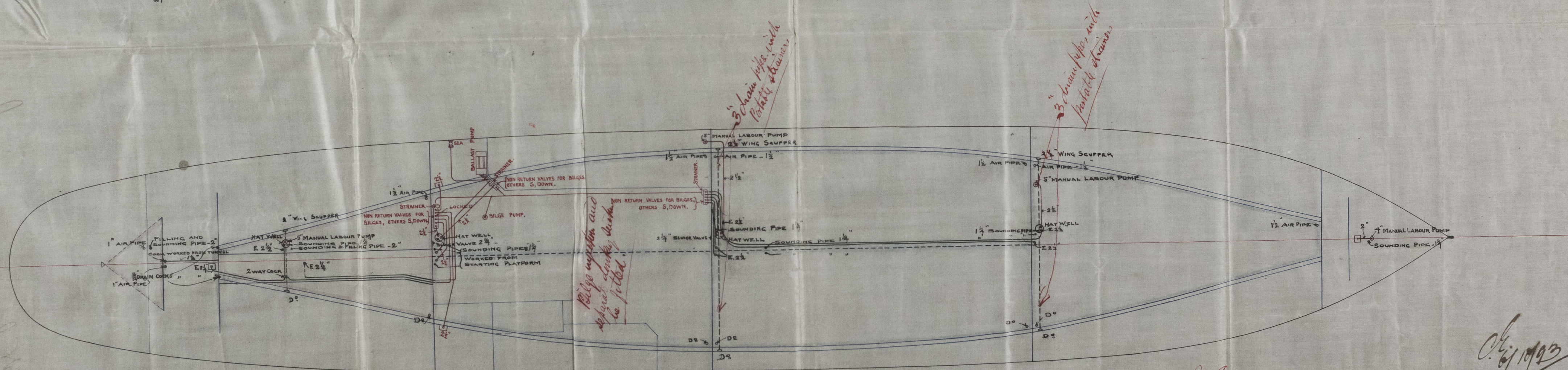
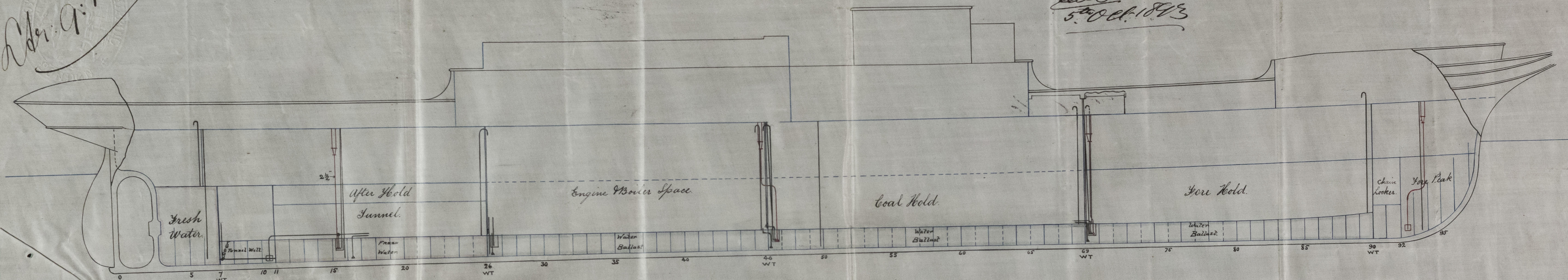
*Order 9:10:93*

# PUMPING ARRANGEMENT

SCALE, 1/8 INCH = 1 FOOT

*Thos W. Napier & Sons  
5th Oct. 1893*

TONNAGE UNDER MAIN DECK ABOUT 600



WING SCUPPERS TO HAVE FIXED GRATINGS  
AT THEIR UPPER ENDS, WITH A PORTABLE  
ROSE OUTSIDE FOR CLEANING.  
PERFORATED PLATES TO BE FITTED OVER HAT WELLS

E = ENGINE SUCTION

*MA.  
9-10-93*

*Chas. Napier & Sons*

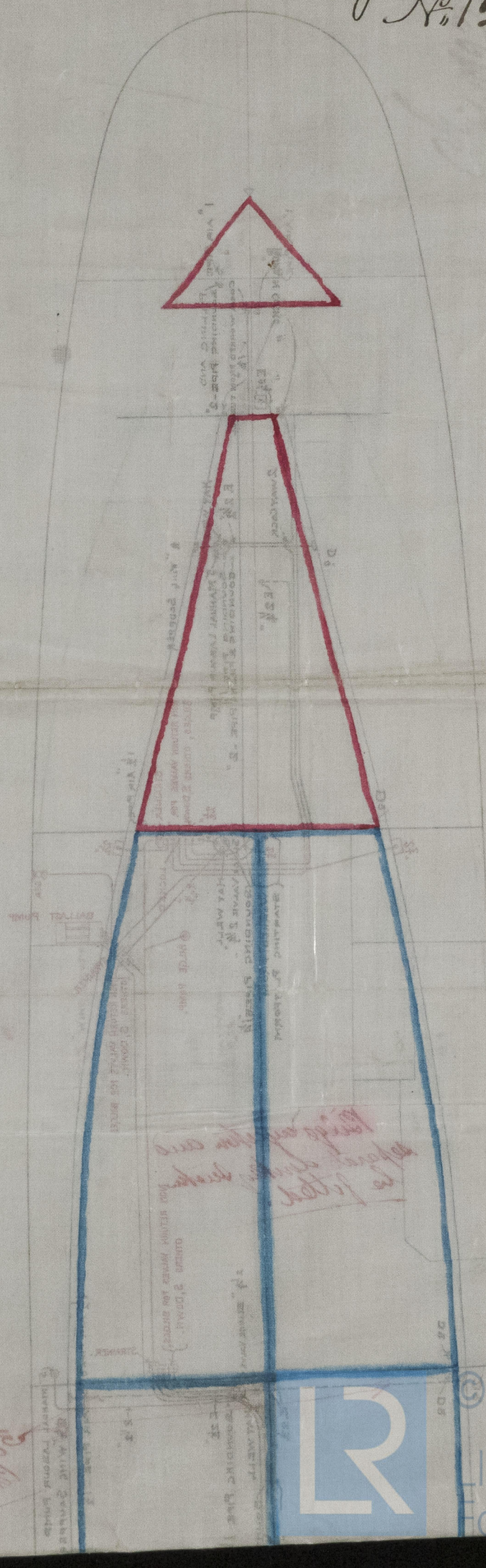
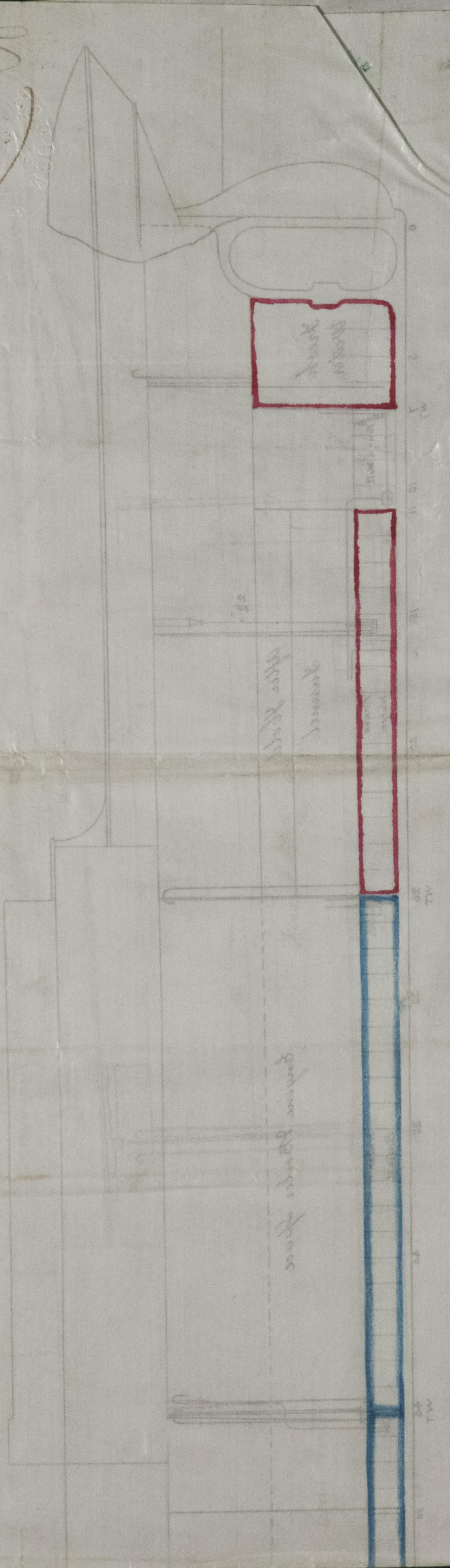


54350  
7-2-27

*John Williams*  
1010

GLS239-0017  
S.S. "John Williams" Glasgow Report  
No. 12445

TONNAGE UNDER MAIN DECK ABOUT 6000  
PUMPING



REMARKS: SPACES TO BE FILLED OVER THE  
HULL OUTSIDE FOR CLEAVING  
WIND AND WATER TO NAVIGATE  
EASILY AND TO BE STAYED



© 2021  
Lloyd's Register  
Foundation