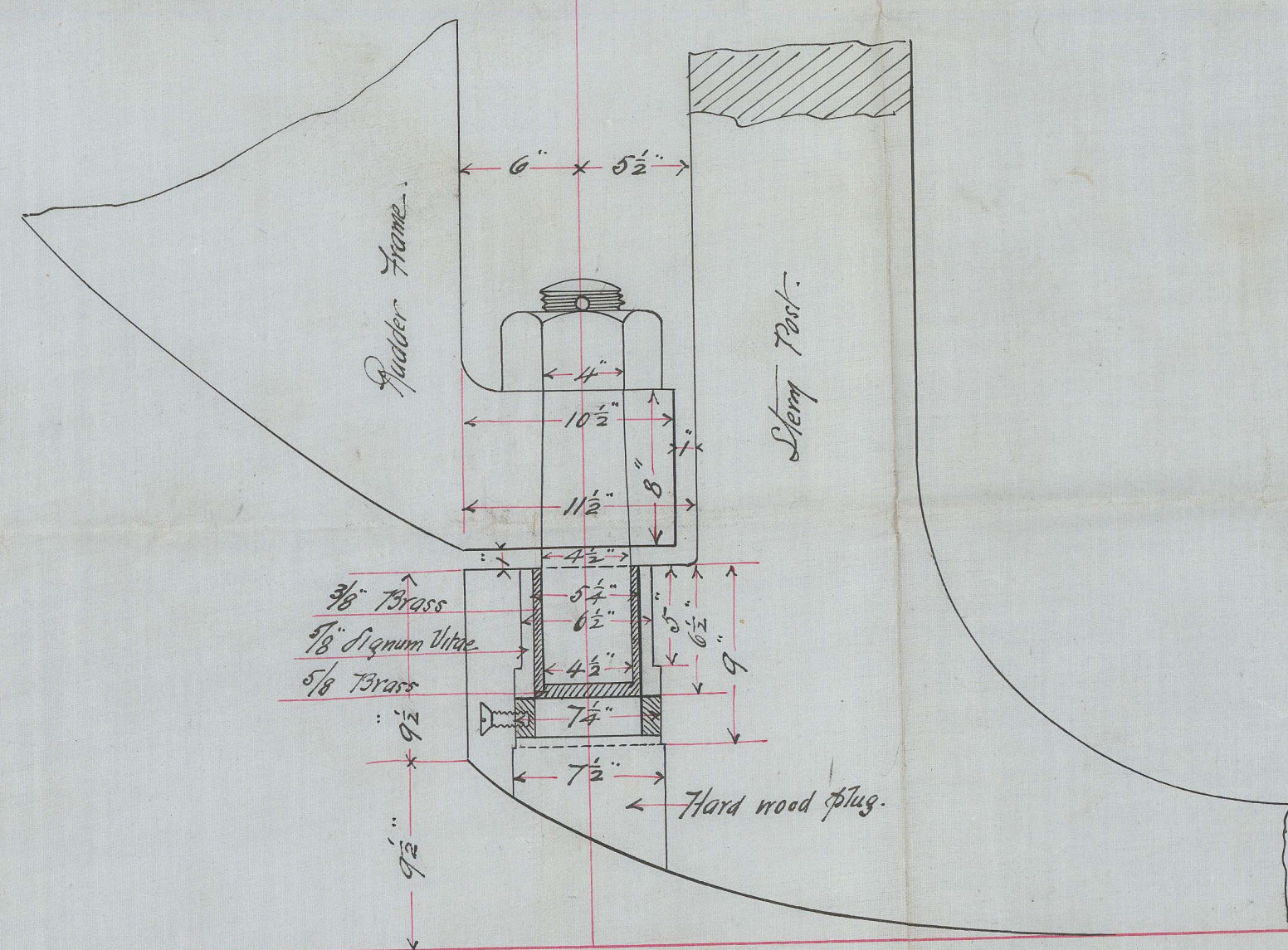


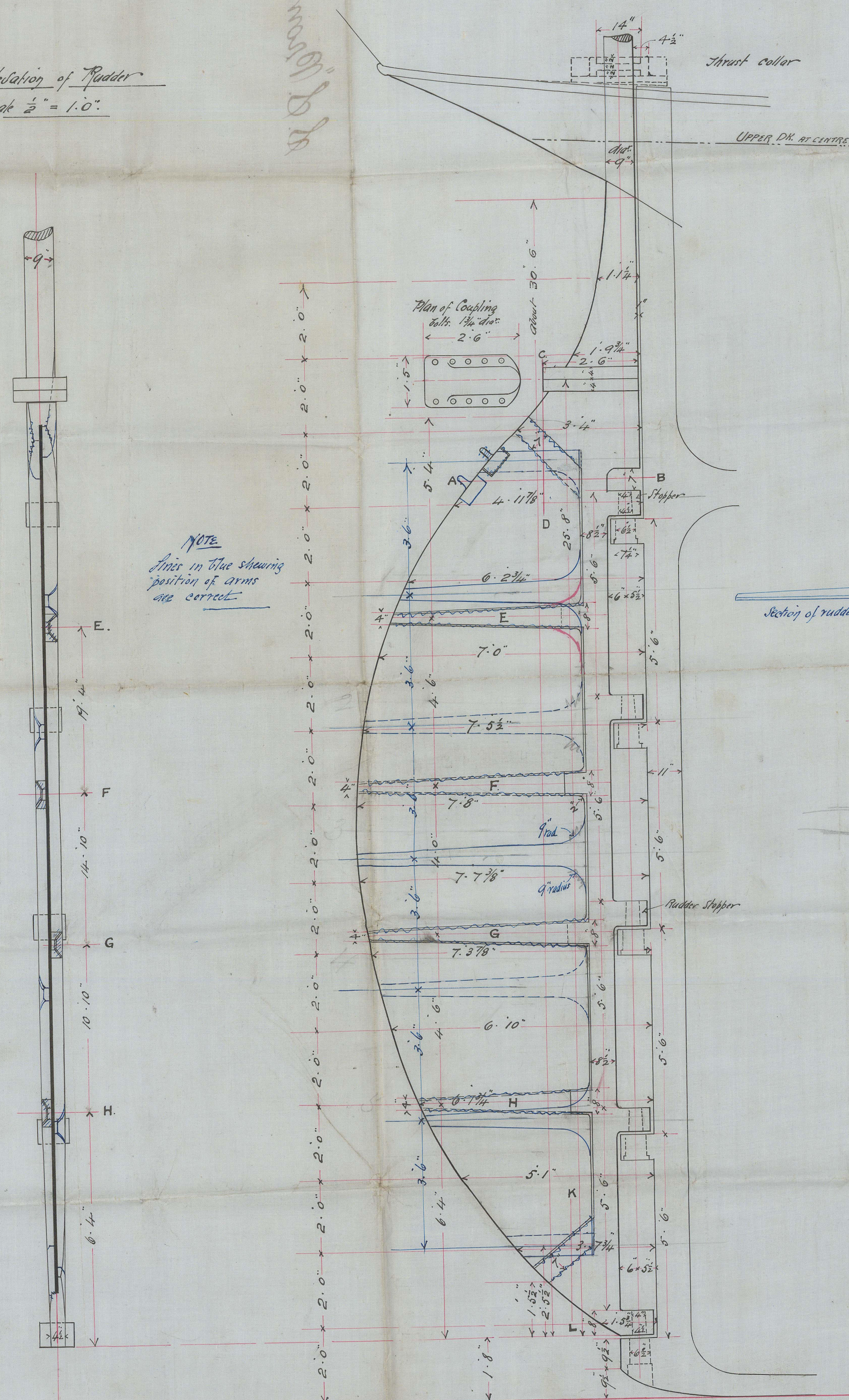
Sketch of Pimble.
Scale $1\frac{1}{2}'' = 1.0''$



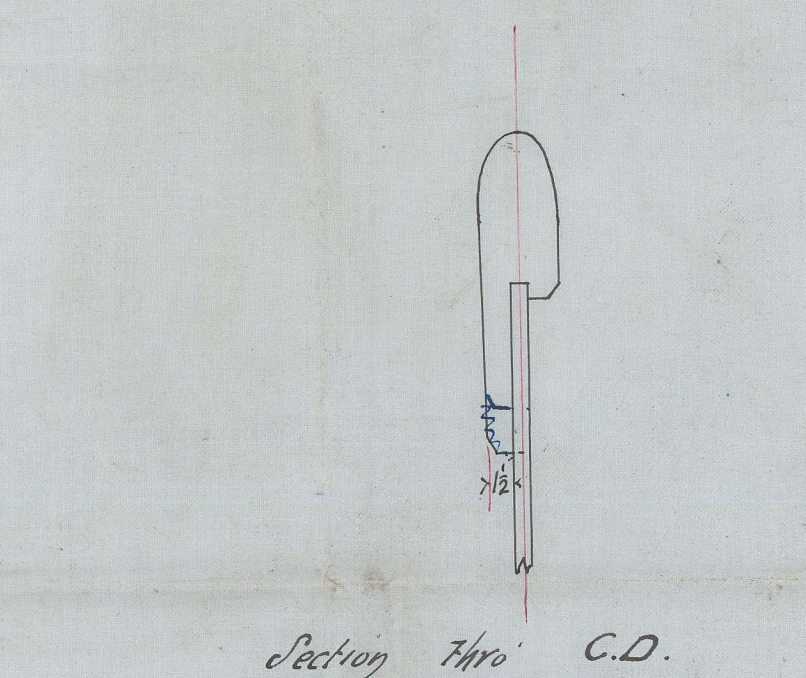
End Elevation of Rudder
Scale $\frac{1}{2}" = 1.0"$

NOTE
Lines in blue showing
position of arms
are correct

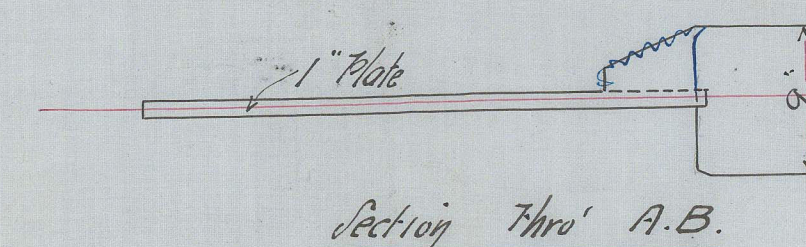
RUDDER.
S.S. No 490.



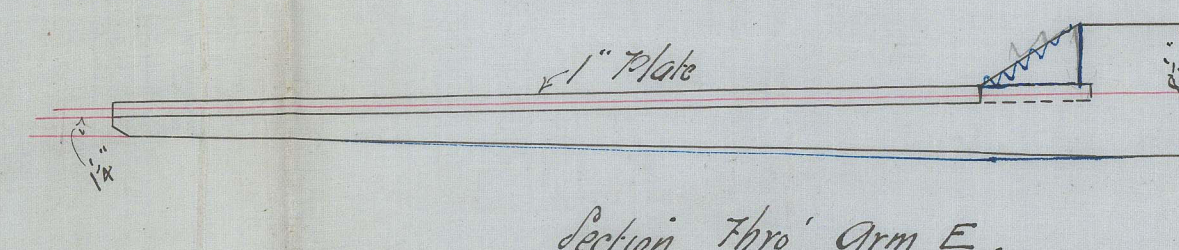
Sections in way of Grms r.
Scale 1" = 1.0"



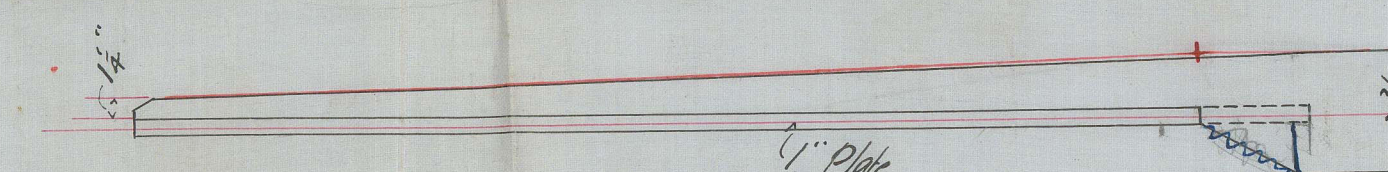
Section Thro' C.D.



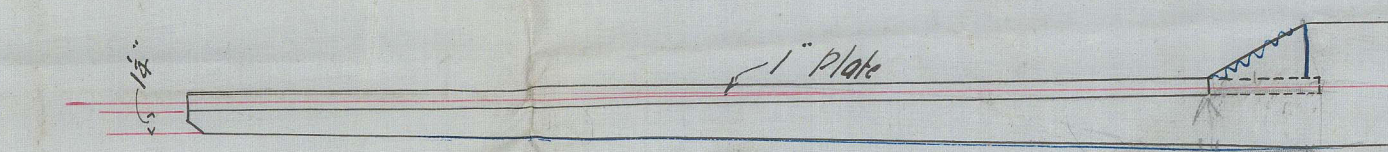
Section Thro' A.B



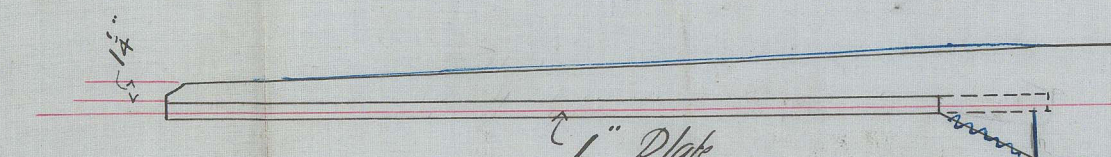
Section Thro' Arm E.



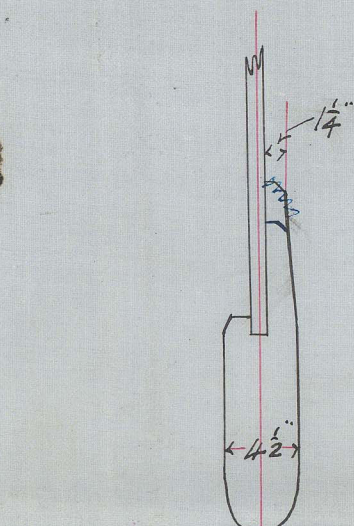
Section thro' Arm F.



Section thro' Arm G



Section thro' Arm H.



Section Thro' K.L.

