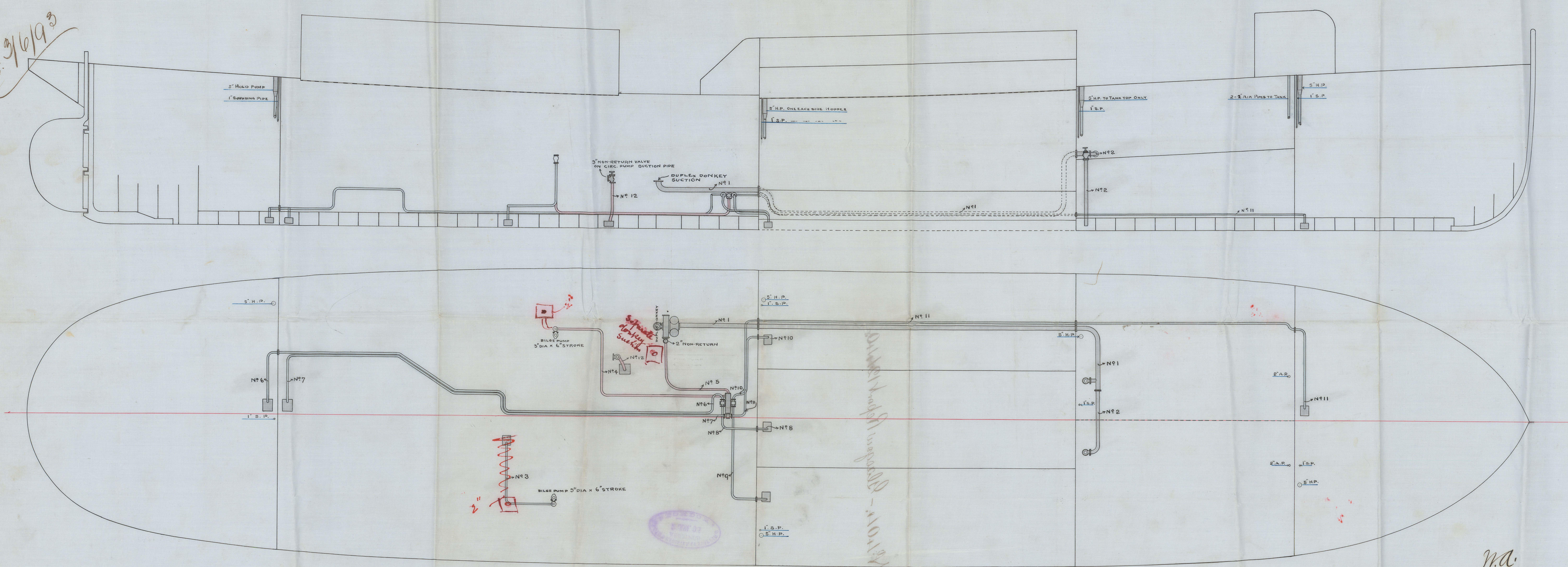


Oct. 31/93



LIST OF PIPES			
N°	PURPOSE	BORE	PIPE
1	BALLAST SUCTION	4"	CAST IRON
2	DO.	3"	D?
3	STBD. BILGE SUCT. FROM ENG. BILGES	2"	LEAD
4	PORT. D? " BILGE BOX	2"	COPPER
5	DUPLEX DONKEY SUCT. FROM BILGE BOX	2"	DO.
6	BILGE SUCTION FROM AFT COMP.	2"	LEAD
7	BILGE SUCT. FROM ENG. BOILER SPACE	2"	DO.
8	" " " HOPPER WELL	2"	DO.
9	" " " STBD. AIR COMP.	2"	DO.
10	" " " PORT. D?	2"	DO.
11	" " " FORE COMPARTMT.	2"	DO.
12	BILGE INJECTION ON PORT CIRC. SUCTION	3"	COPPER

ARRANGEMENT OF BILGE PIPES FOR N° 404  
(LLOYD'S PLAN)  
SCALE 1/4" = ONE FOOT.

LOBWITZ & Co., RENFREW  
Drawing No. 404  
Designed by J. G. & H. S. Appleton  
Checked by J. S.  
DATE, May 25<sup>th</sup> 1893.

M.A.  
2-6-93



TOOF ENO =  $\frac{1}{4}$  FLACS

(2002 JUL 29)

# DISPLACEMENT OF BITCE

2500

312

Dredger N<sup>o</sup> 404. - Glasgow Report 12/1/10.

