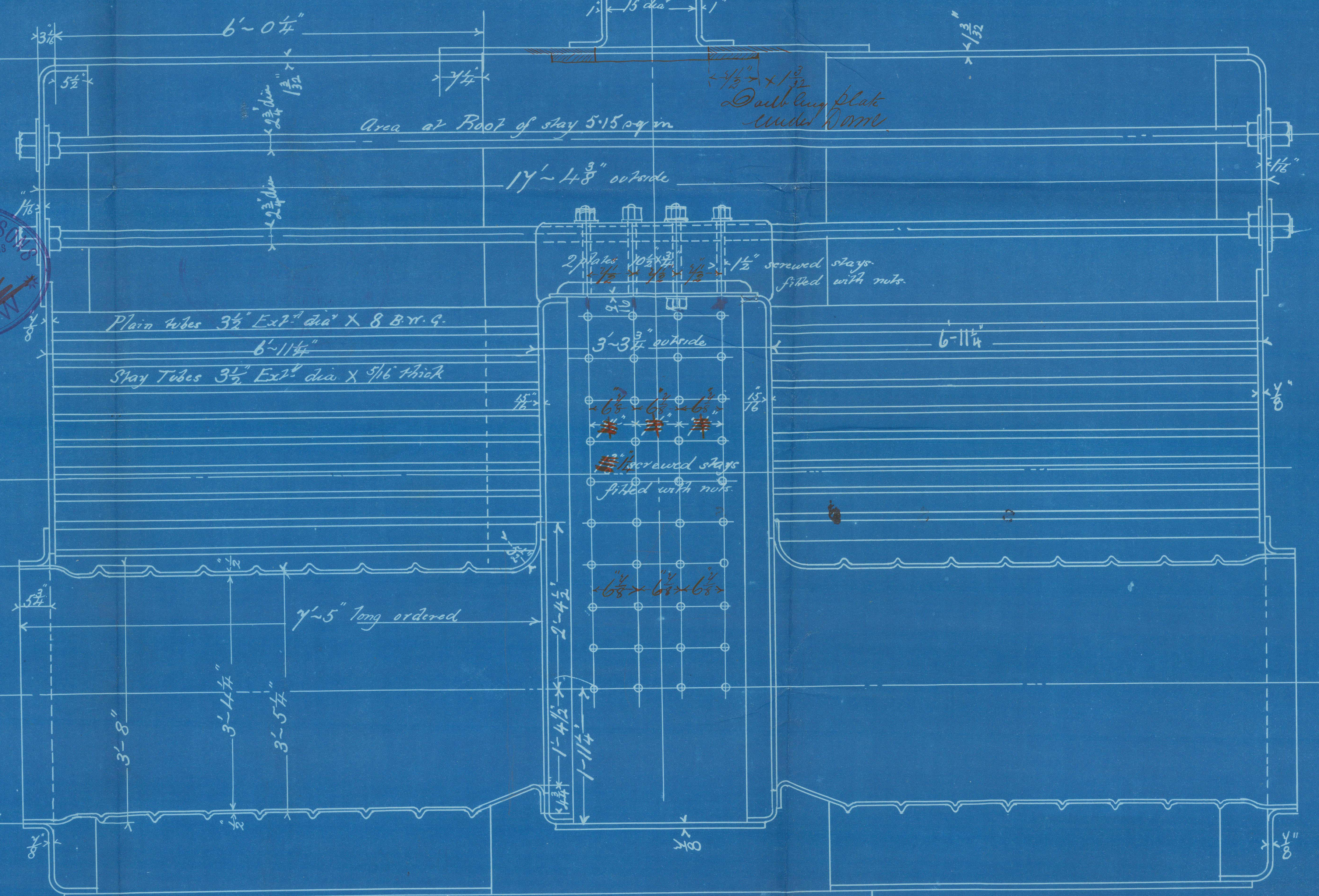
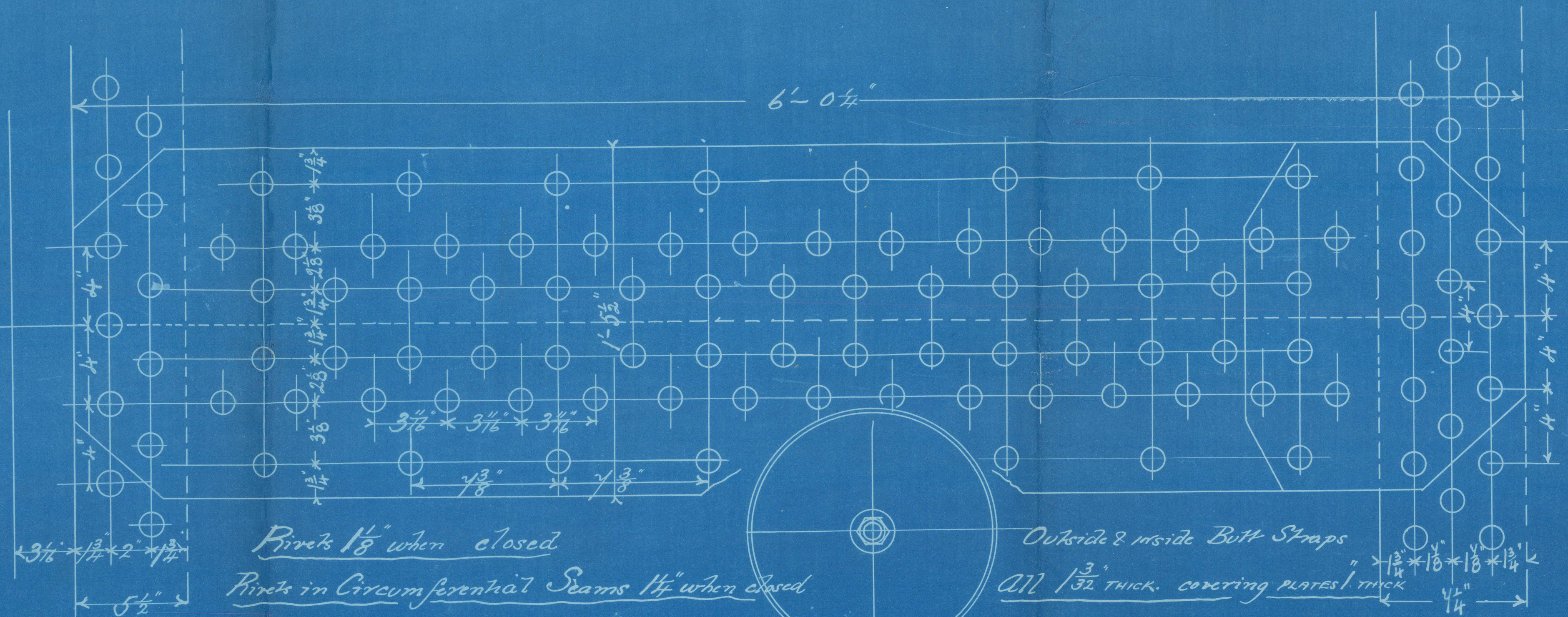
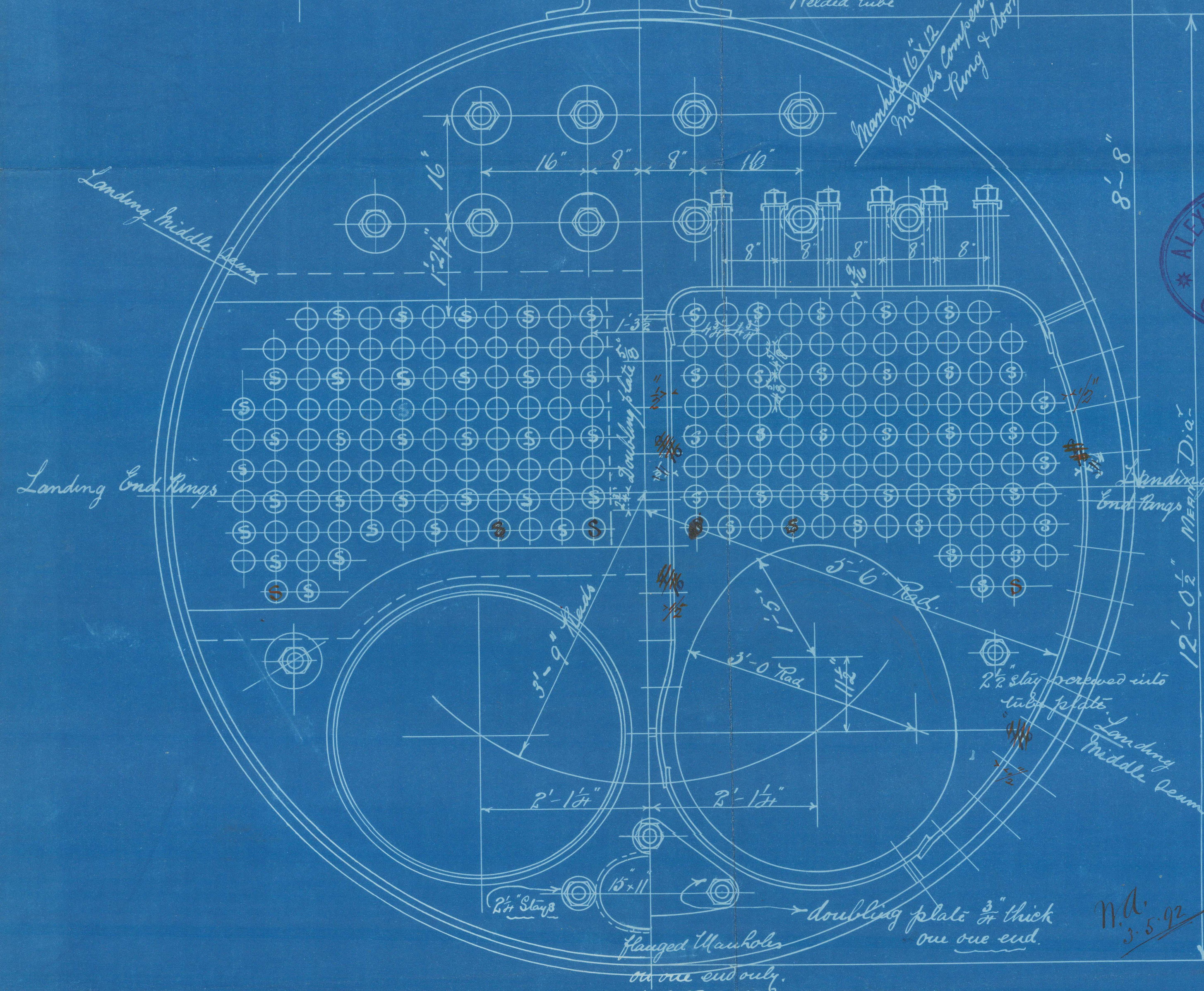
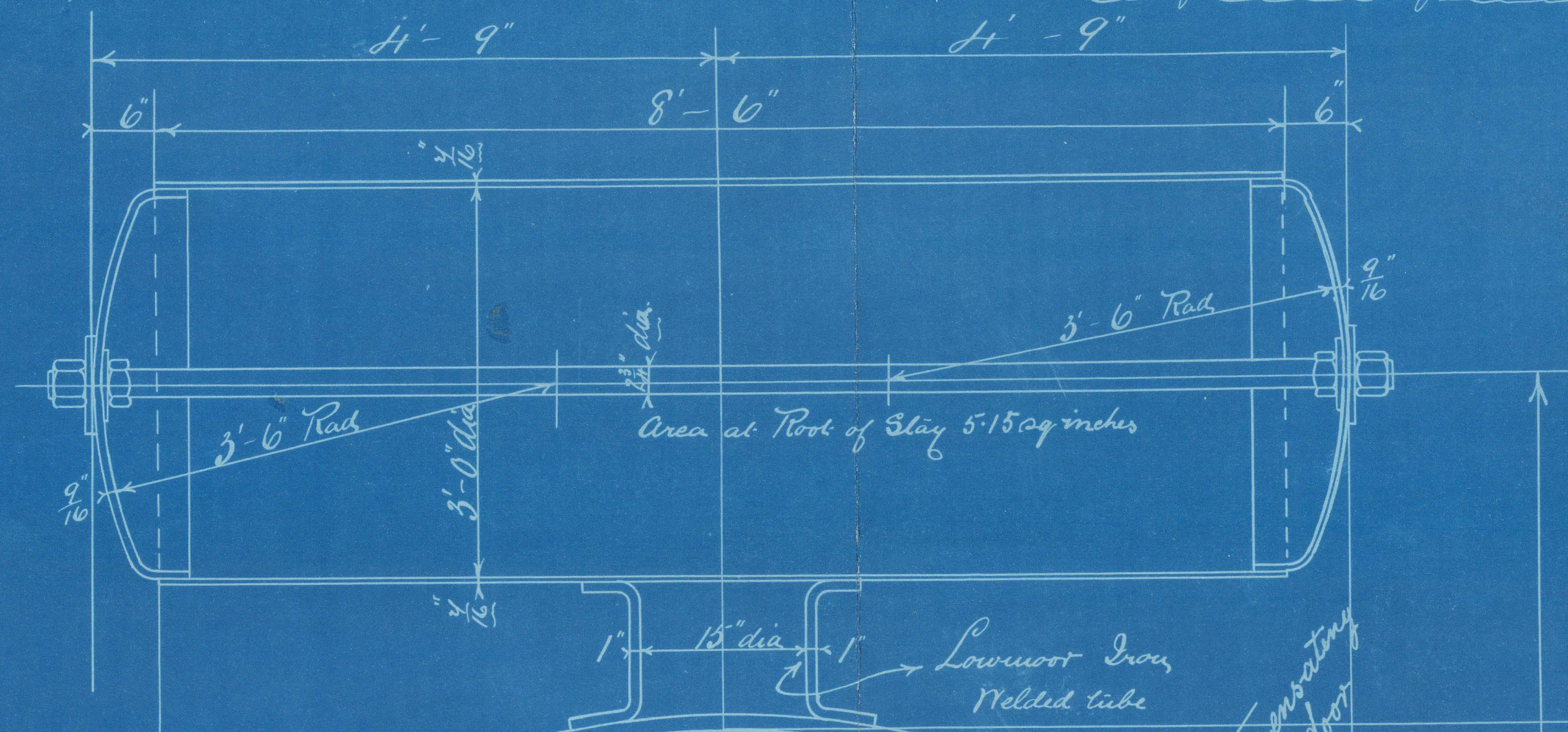
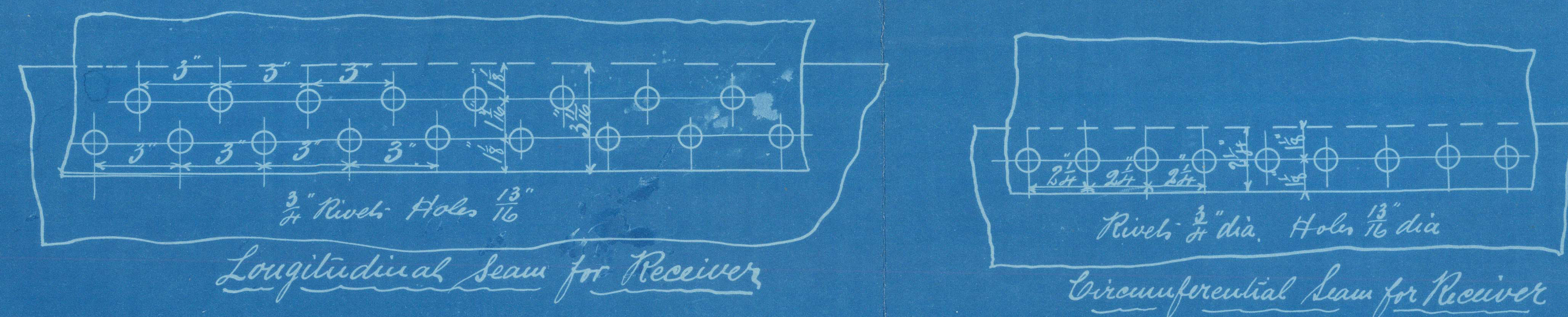


Rev. 5.5.92



NEW BOILER for S.S. "QUEEN VICTORIA" 160 LBS. WORKING PRESSURE. TESTED TO 320 LBS.

SIEMENS MARTIN MILD STEEL THROUGHOUT. EXCEPT DOME CONNECTING PIPE.

scale 1" = one foot



Messrs A. Stephen & Son  
New Main boiler.  
160 lb.

S.S. "Queen Victoria."

Glasgow Report

No 11435.—



© 2021

Lloyd's Register  
Foundation