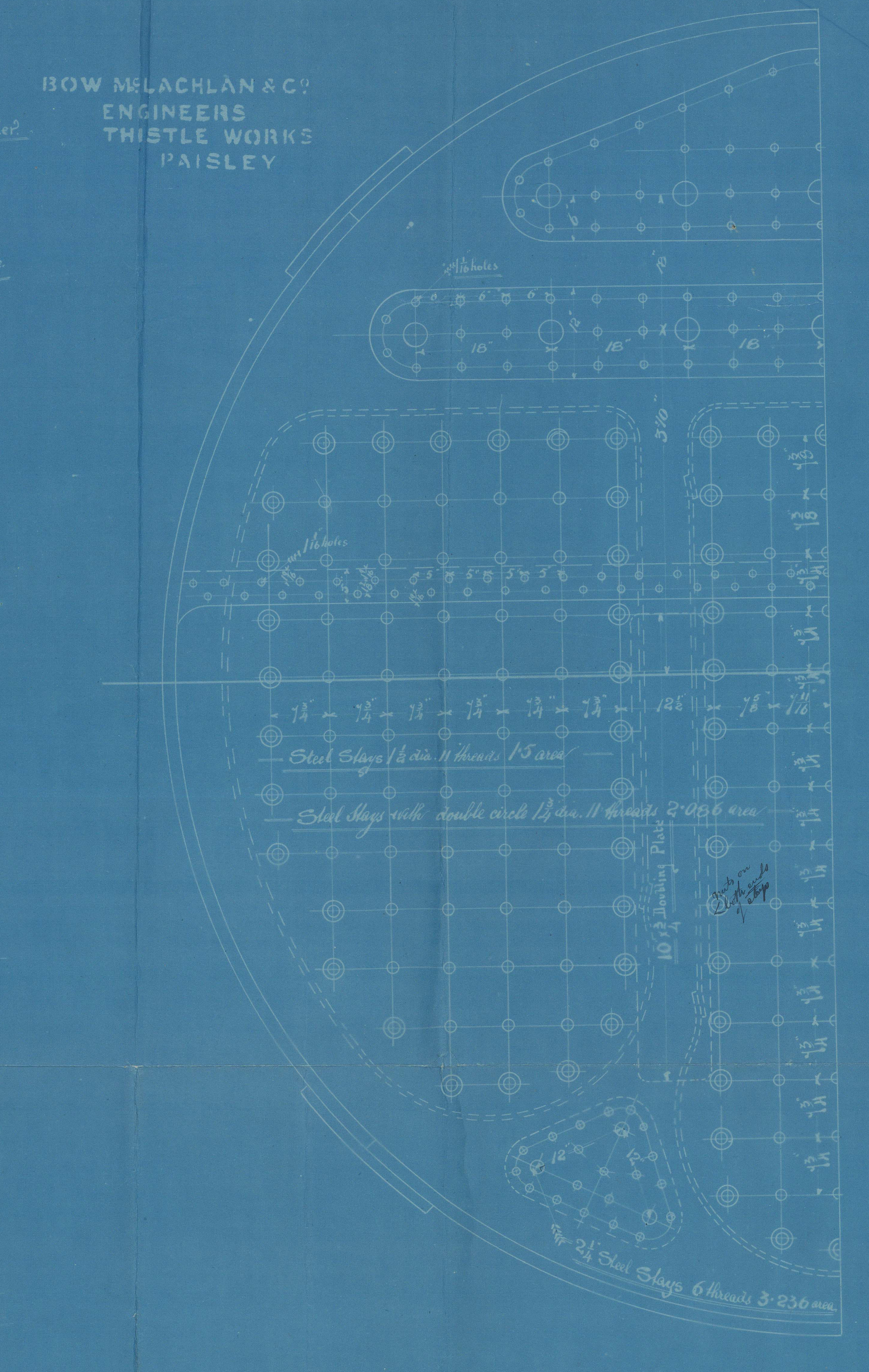
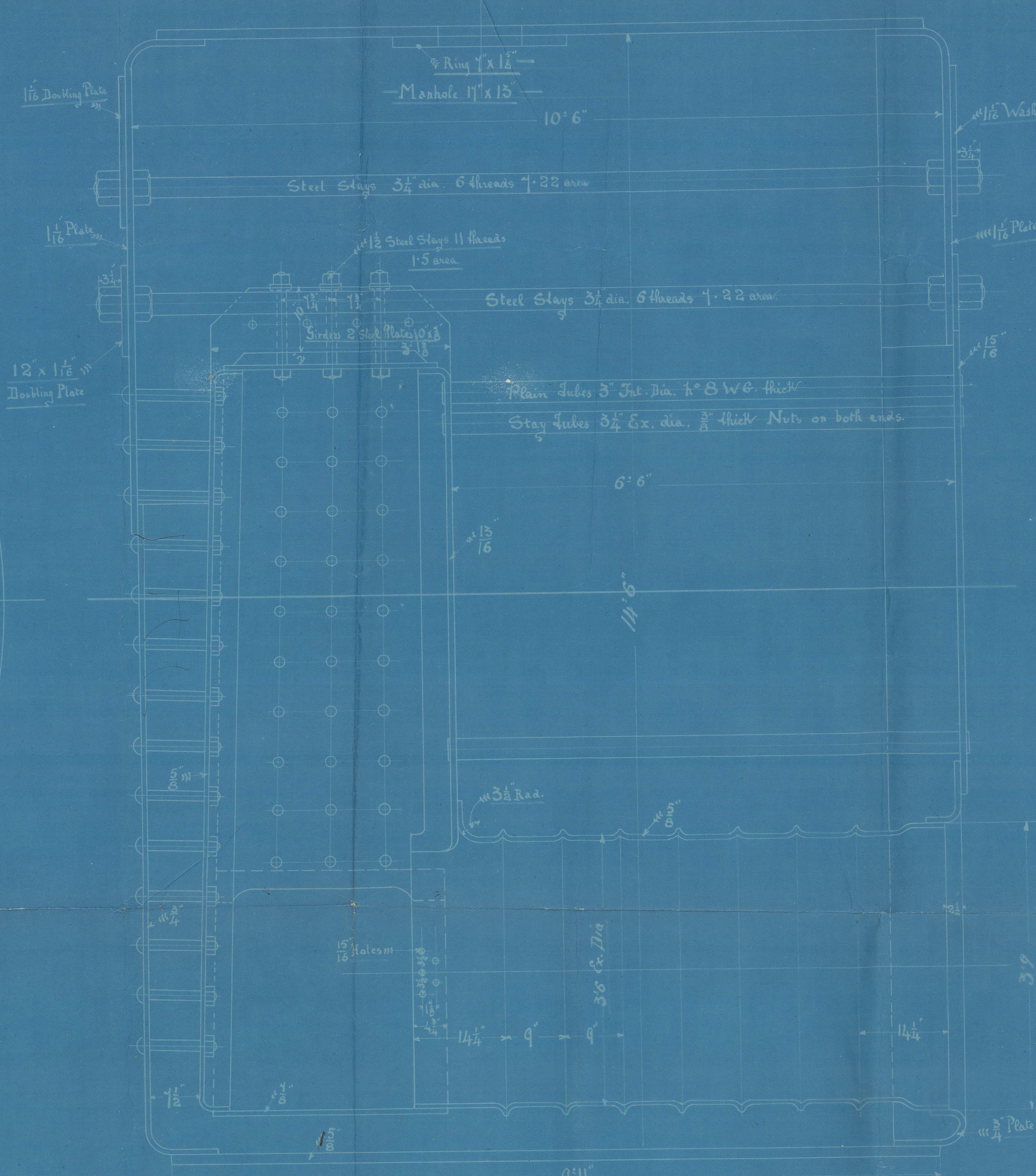
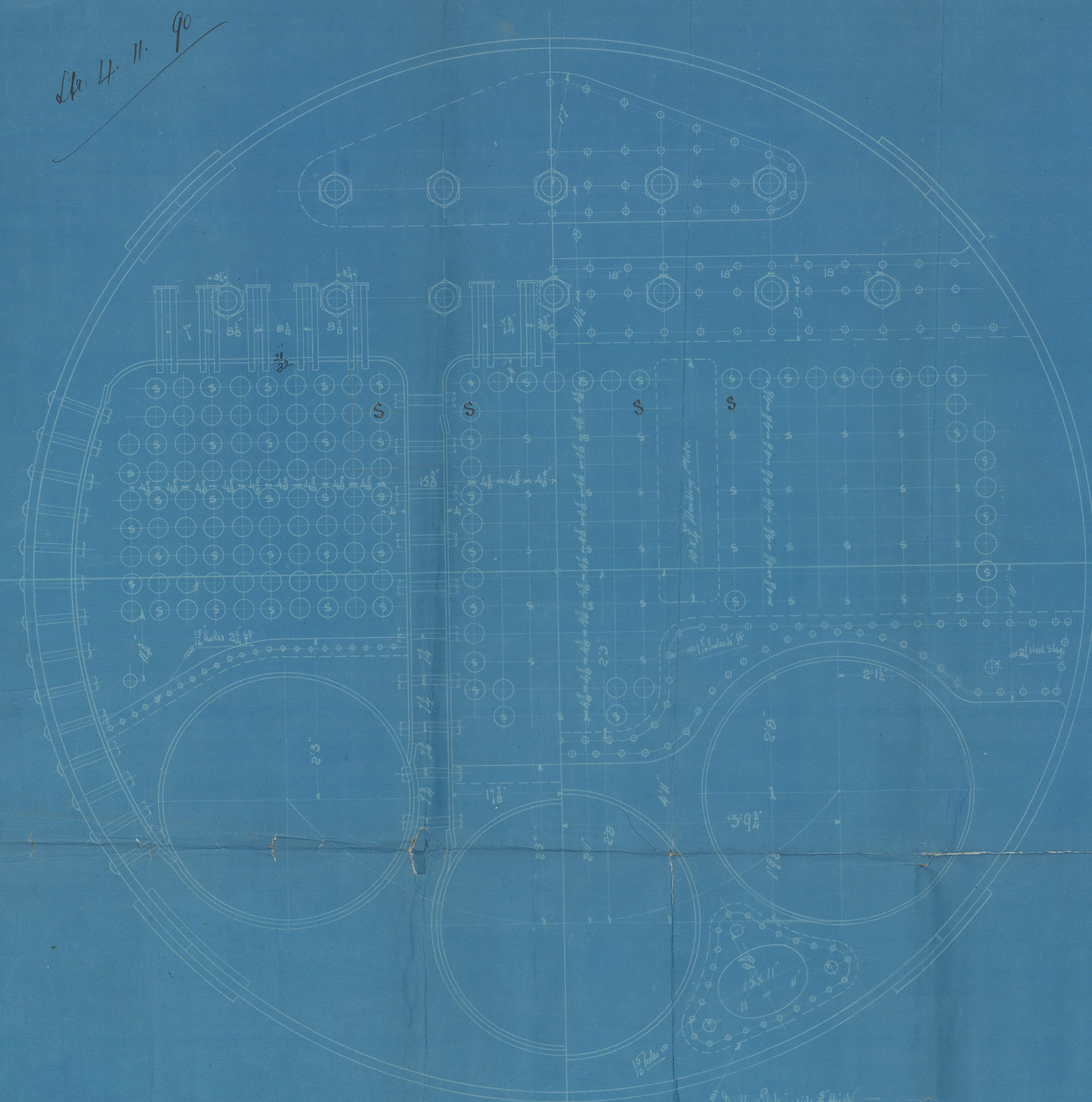


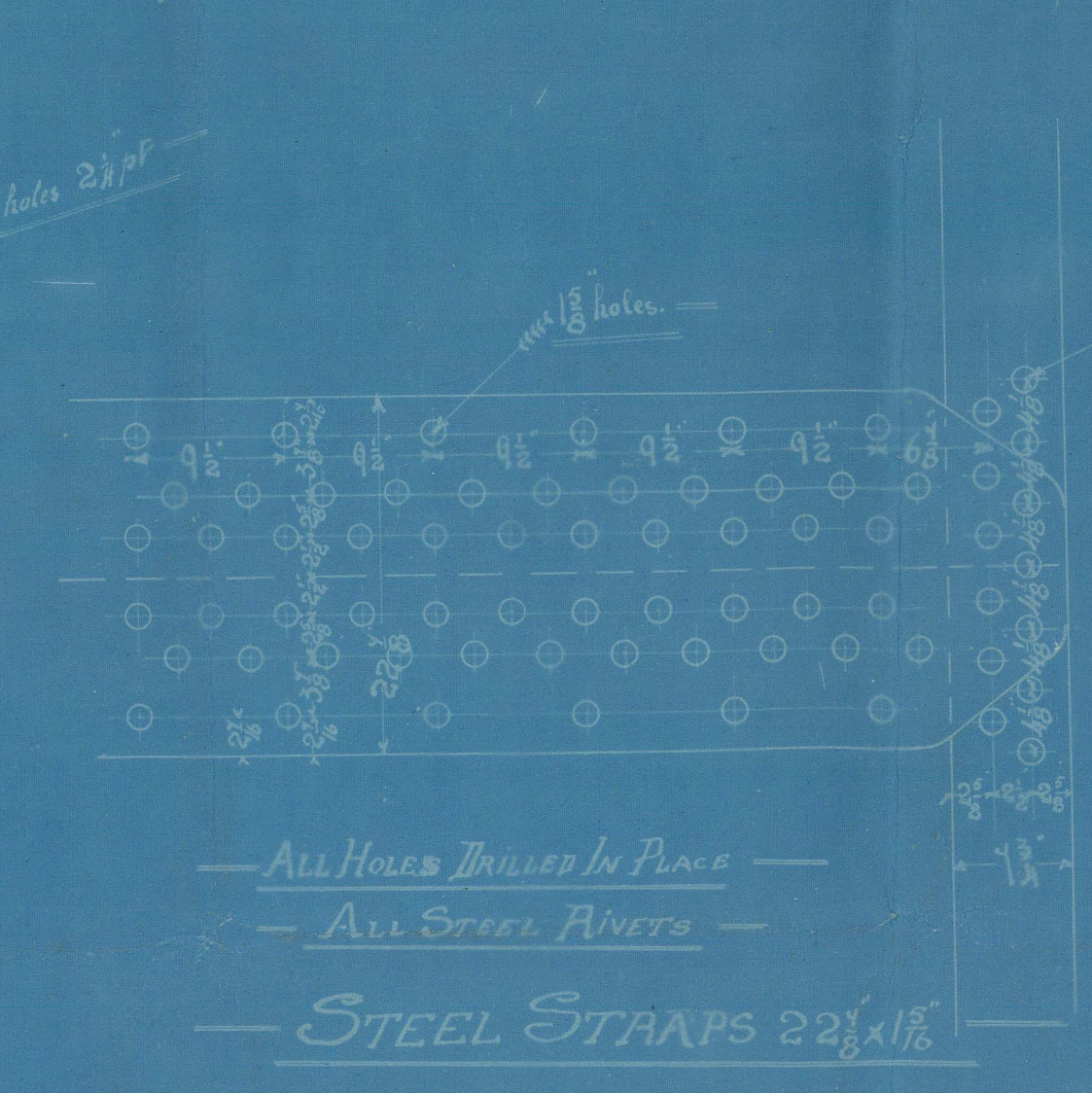
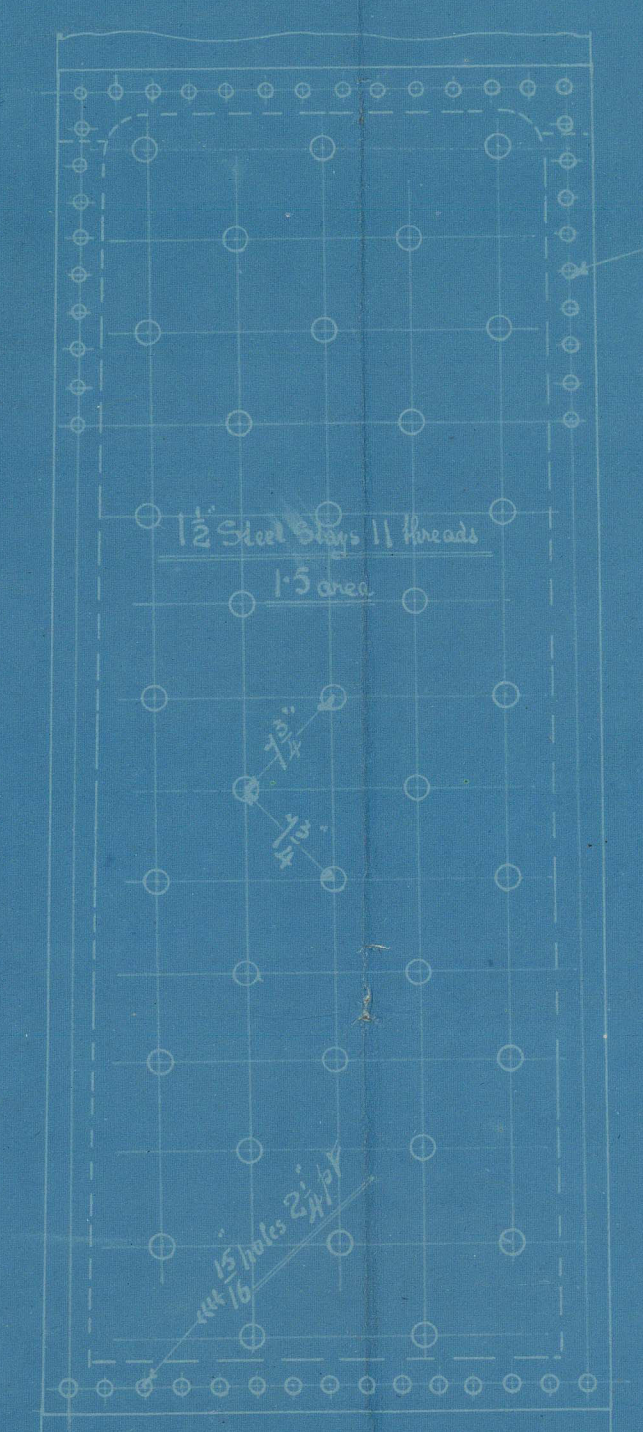
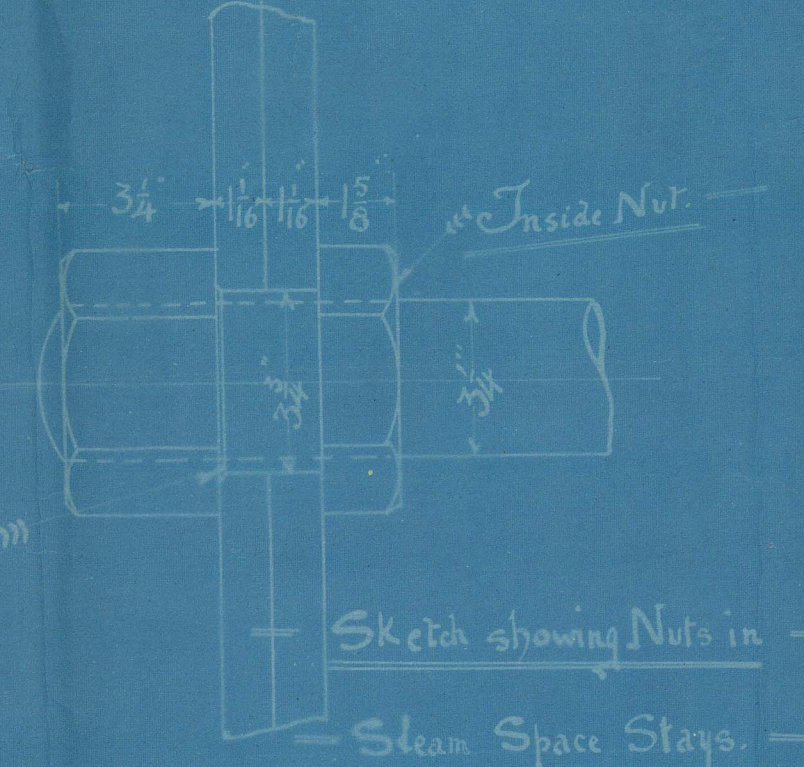
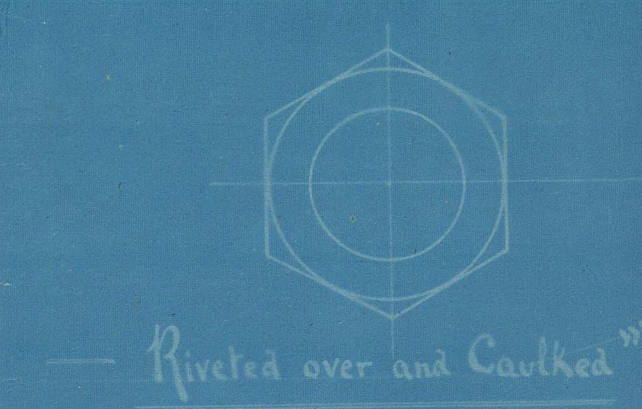
Dr. 4. 11. 90



BOW MELACHLAN & CO
ENGINEERS
THISTLE WORKS
PAISLEY

Thickness of plates 3/16"

Shell	3/16"
Stays	3/16"
Flues	3/16"
Back Com. Chamber	3/16"
Top flue plate	3/16"
Bottom flue plate	3/16"
Back flue plate	3/16"
Front flue plate	3/16"
Back flue plate	3/16"
Front flue plate	3/16"



MARINE RETURN TUBE BOILER 14'6" DIA. 10'6" LONG.

Scale 1" = One foot

Working Pressure 200 lbs per sq. in. - Boiler Number 305

Drawing No. 4487
30 October 1890

BOW MELACHLAN & CO
ENGINEERS
THISTLE WORKS
PAISLEY

STAYS THROUGH COMBUSTION CHAMBER & SHELL PLATE

Dr. 4. 11. 90

Flam & Ted
169
"Bailers"
S. S. "Upolu" Glasgow Report No. 11198.—

GLS226-0080



© 2021

Lloyd's Register
Foundation