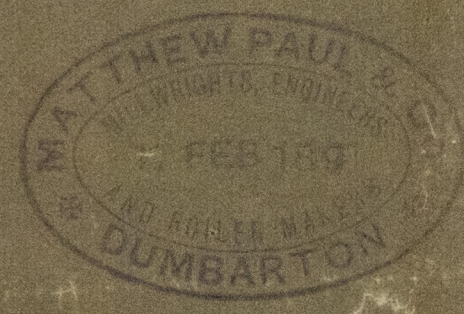


STEEL
BOILERS N^o 421.2.

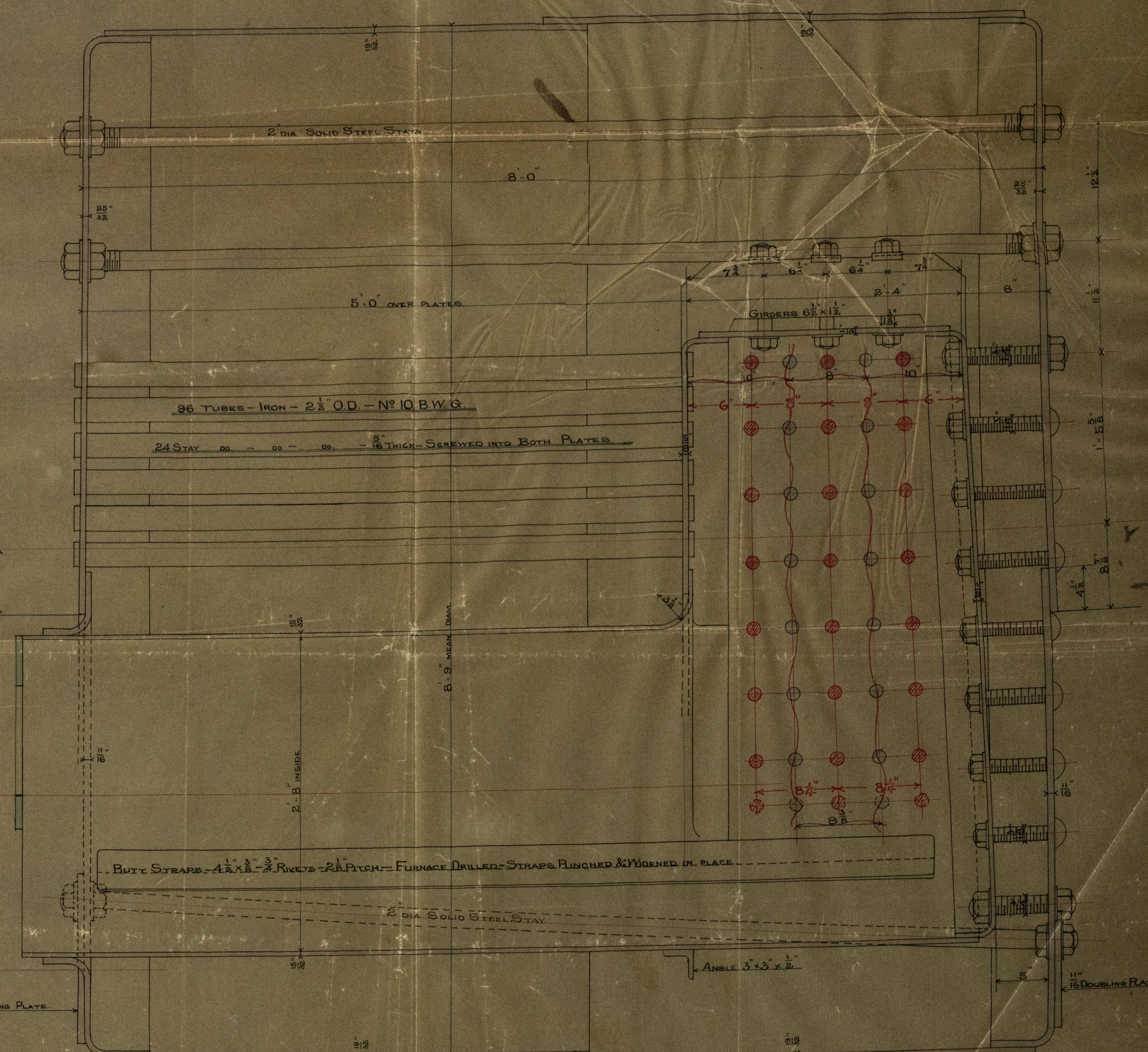
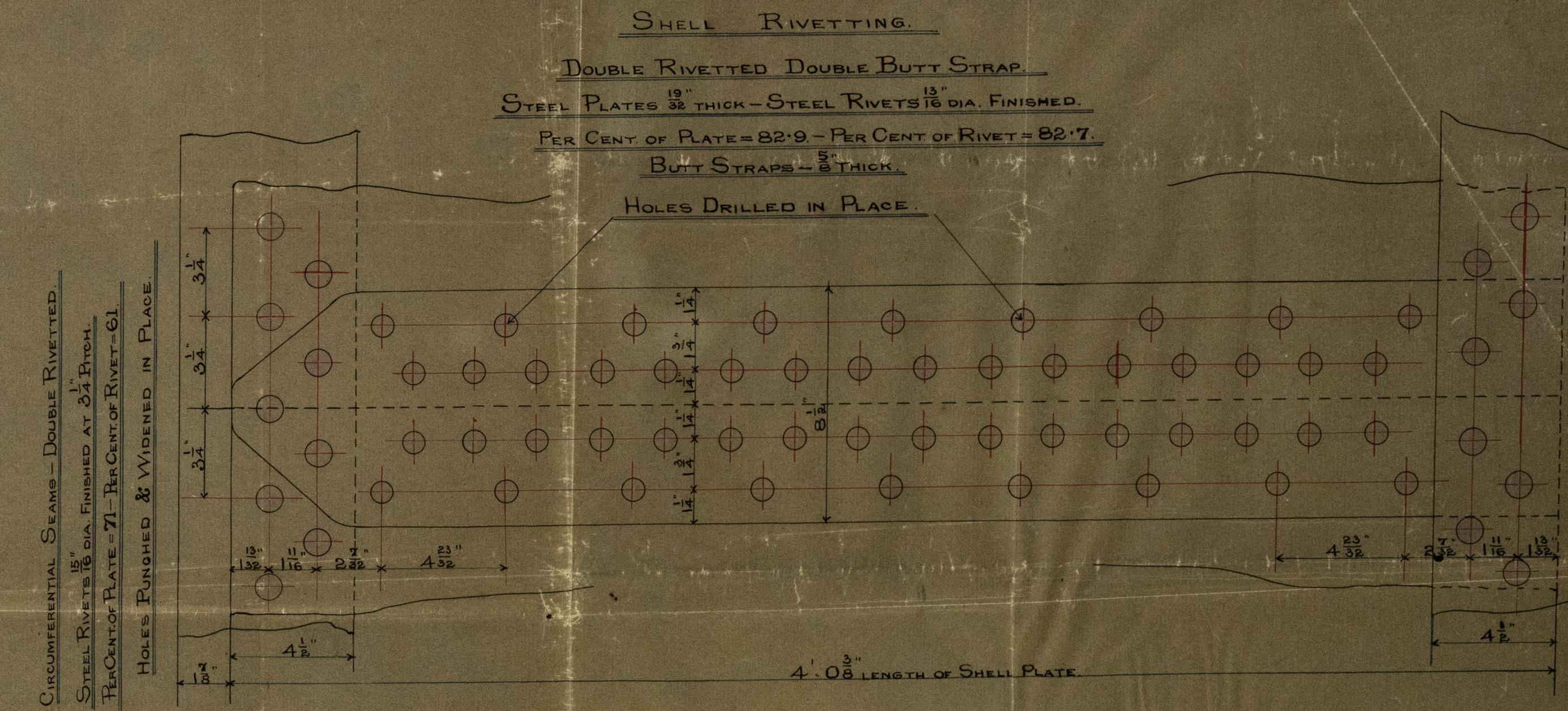
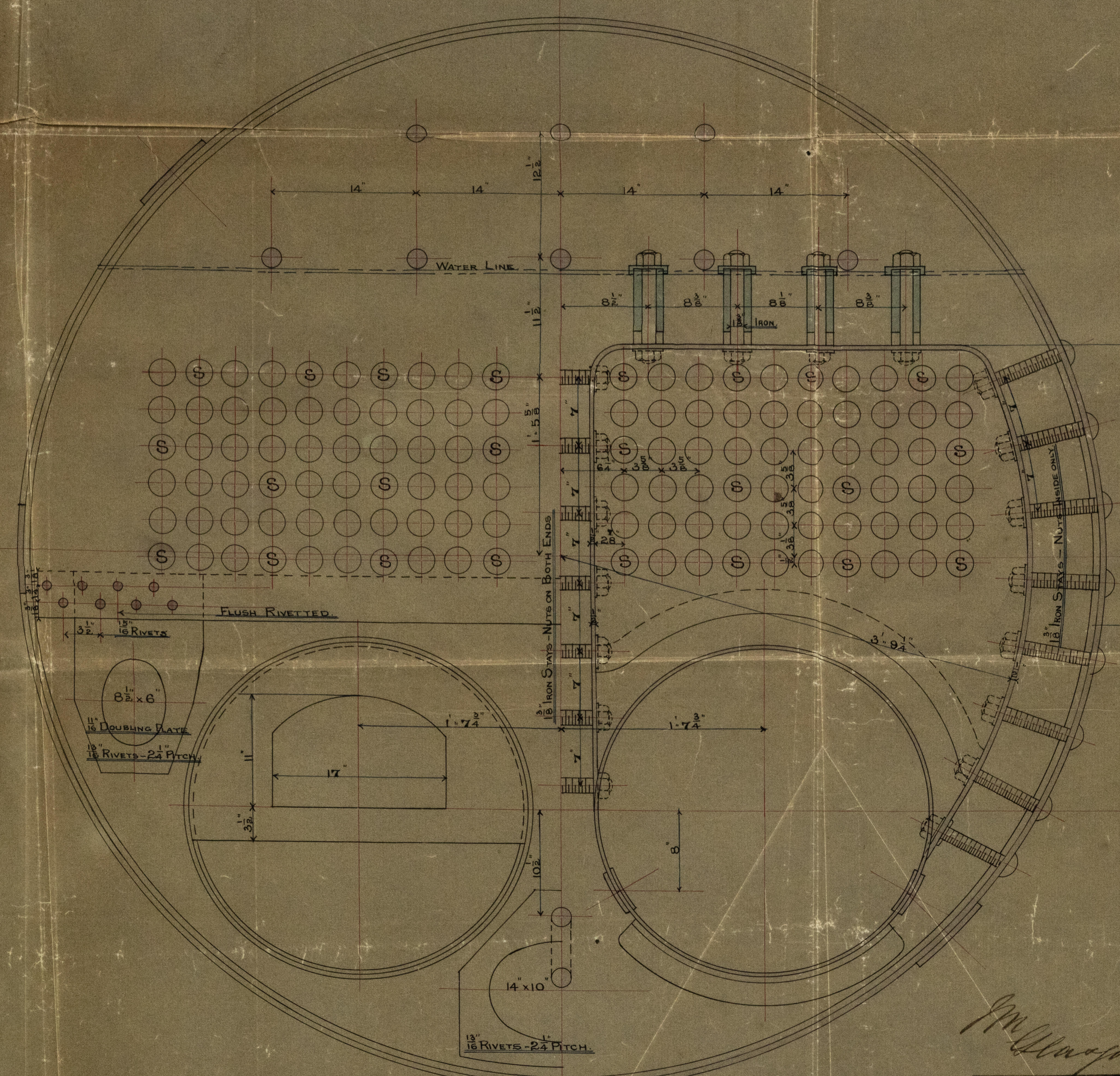
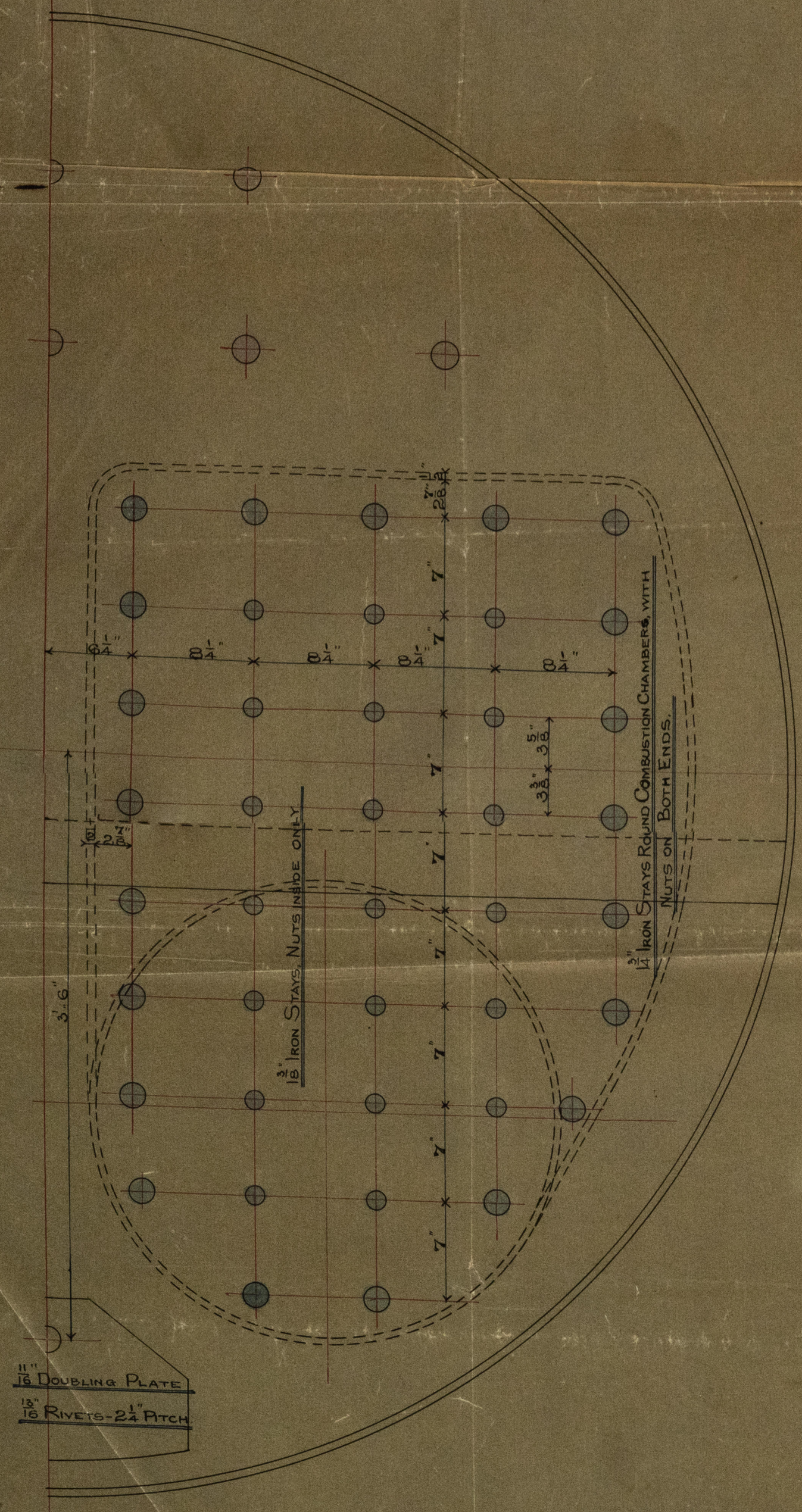
SCALE $\frac{1}{2}$ " = 1 FOOT.

WORKING PRESSURE = 110 LBS \square

DRAWING NO 24

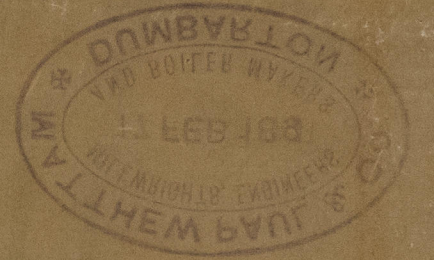


77 James Glasgow Glasgow No 10089.



S.S. Guian. Glasgow Report No 10962.

DRAWING NO 54



WORKING PRESSURE = 110 lbs

SCALE 1" = 1 FOOT

GLS224-0189

BOILER NO 1215

STEEL

Seams - Double Riveted.
Boiler finished at 24' from
the 7' - 11' Riveted Rivet-61
and 8' Riveted in Place.

SHARP RIVETING
RIVETTED DOUBLE BUTT JOINT
1/2" THICK STEEL RIVETS 1/2" DIA FINISHED
END OF PLATE - 82.9 - FOR CENT OF RIVET - 82.7
BUTT JOINT - 82.9 - 1/2" THICK STEEL RIVETS 1/2" DIA FINISHED

