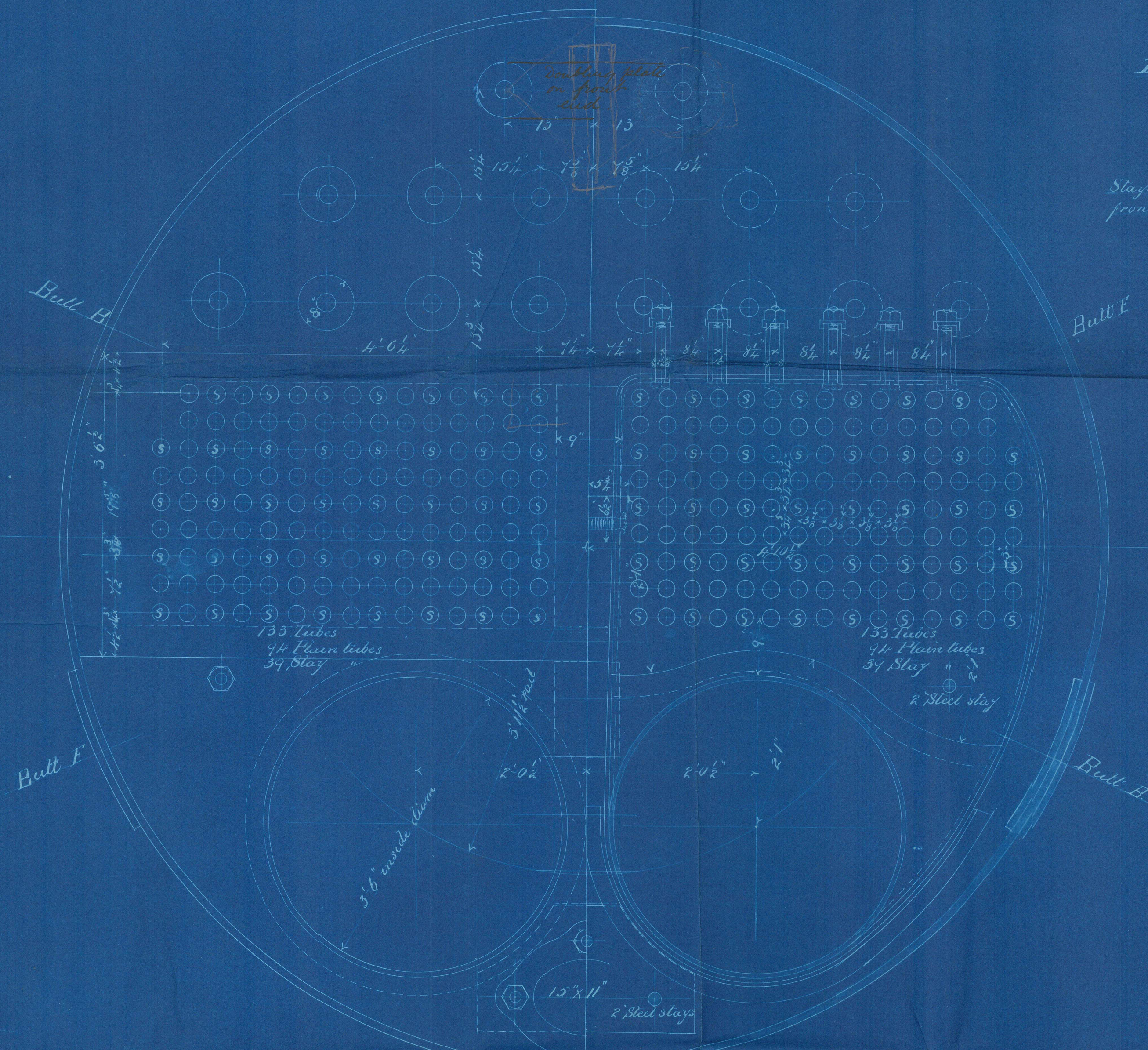
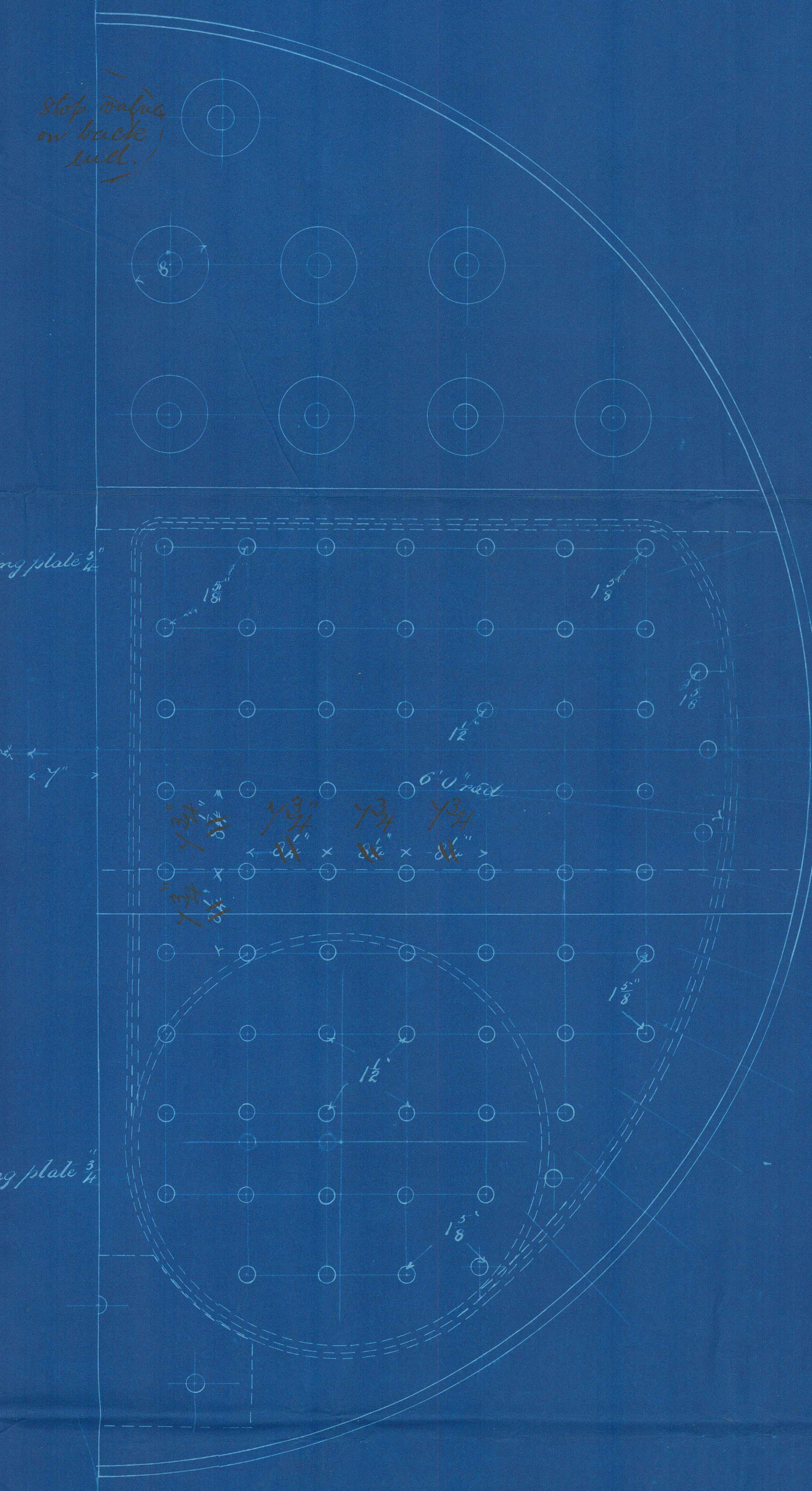
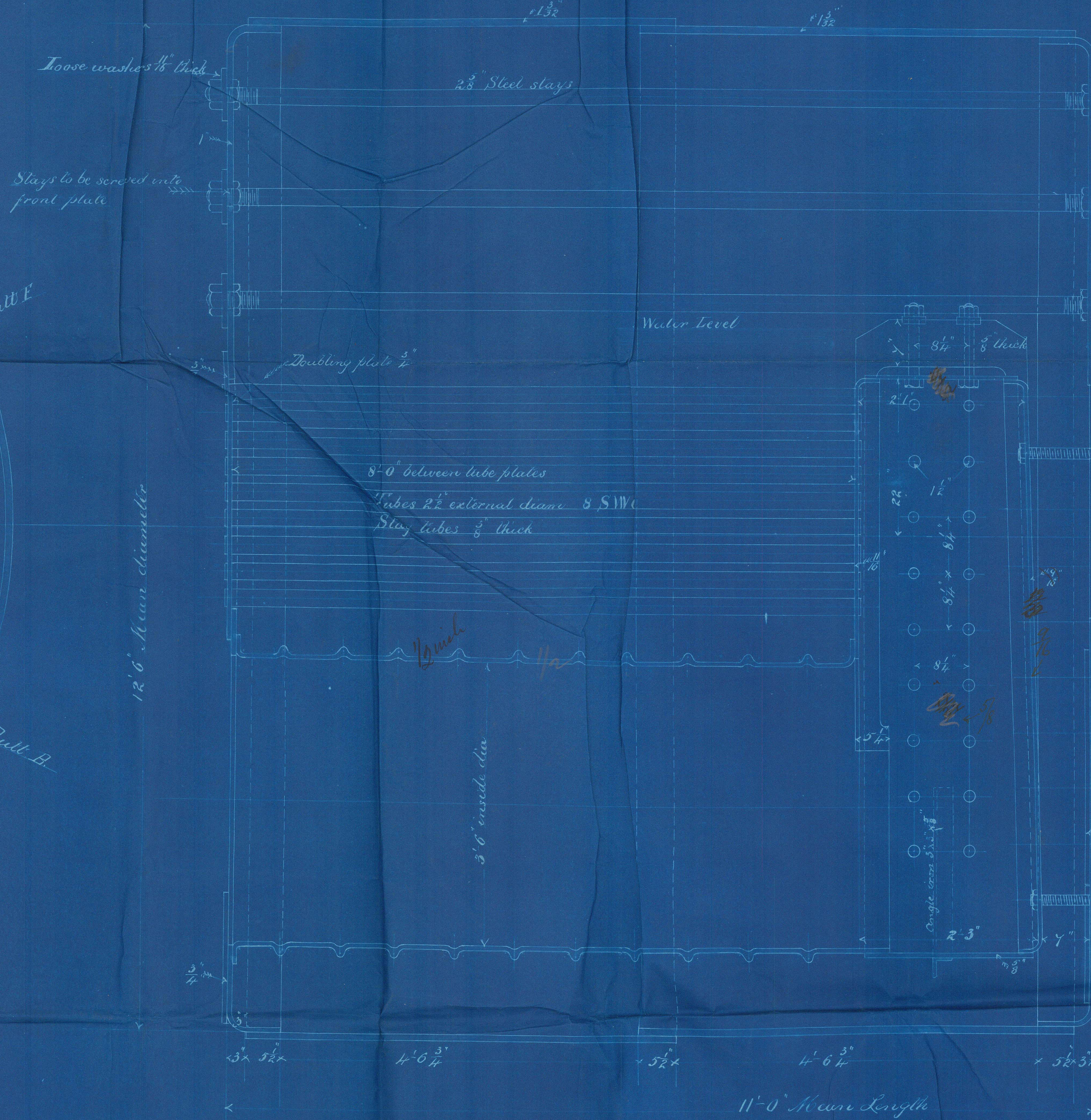
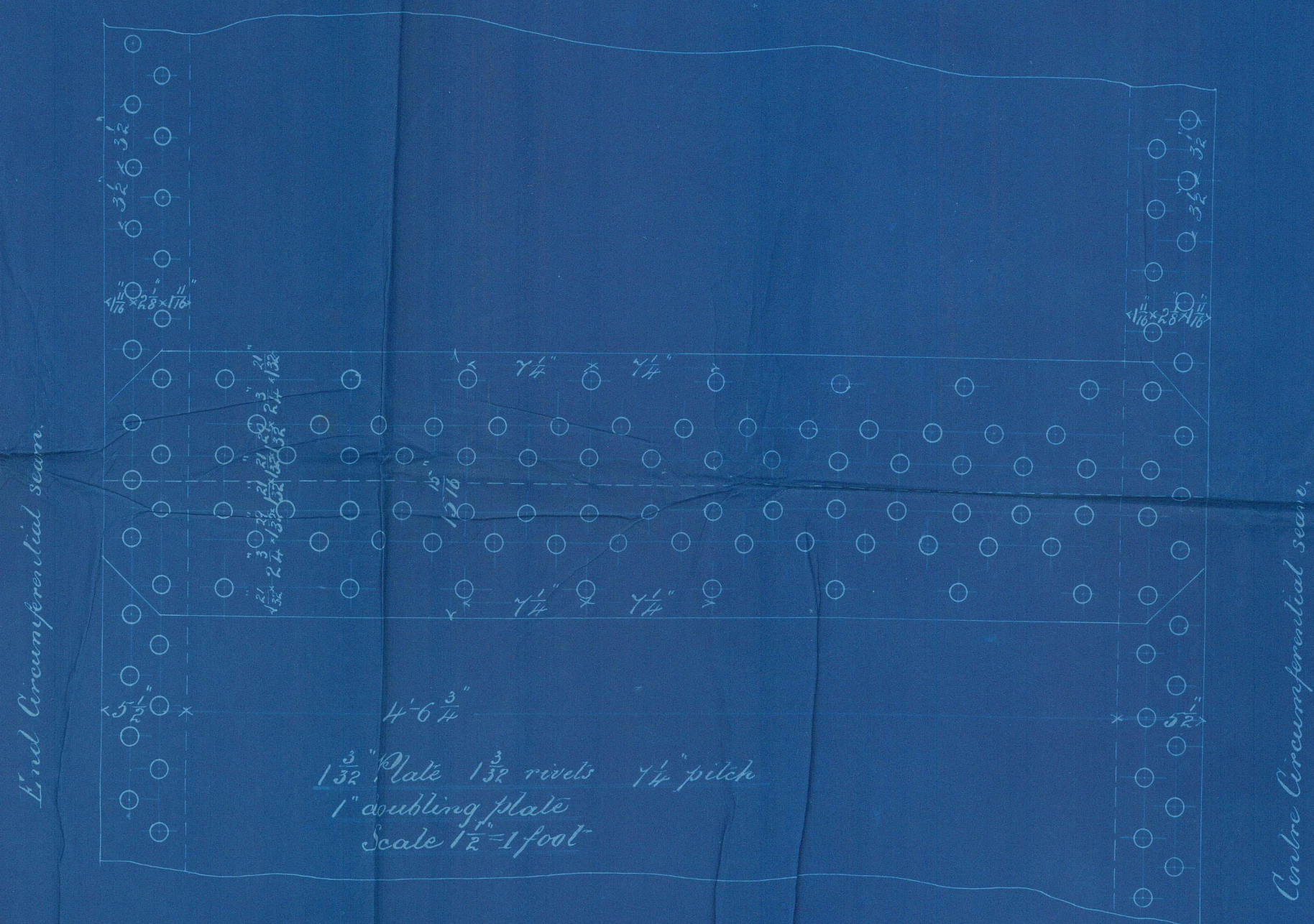


14.9.90



Starboard Boiler



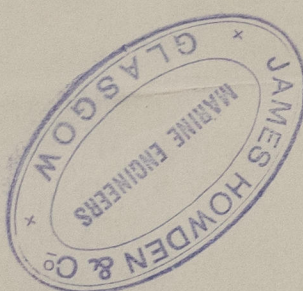
Steel plates Calculated to 29 tons.
Steam space slays 2 3/8" dia 2 3/8" bored steel,
Combustion chamber slays 1 1/2" dia outside row 1 3/8" dia,
10 threads per inch, nuts on both ends,
All holes drilled. Shell drilled in place,

MA
14.9.90

Engine N° 177
Boiler N° 450-1 to 11/1 J. Houdart 1894
100 Working Pressure. Workman Black
Scale 1/8" = 1 foot Drawing N° 4153

Black & Birnie

14.9.90



Boiler Tracing
S.S. "Arctanmhor"
Glasgow Report No 10952.-

Howden &
Partners
173 160/6

