

# MIDSHIP SECTION OF

Sailing Ships Nos 368 & 369.

"MOUNT STEWART" and "CROMDALE." as built  
 1767

To class 100A.

Dimensions  
 Length Keel and Foremast 200' 0" x 200' 0" x 25' 1" moulded  
 Depth of hold to top of Ceiling 24' 0"

Scale 1/2" = one foot.

## Lloyds Numerals

1/2 Breadth 20' 00  
 1/2 Girth 141' 21  
 Depth 25' 92  
 57' 13 = 1st Numeral  
 258' 33  
 26139  
 60704  
 43365  
 17426  
 225082929 = 2nd Numeral  
 + 15  
 240085457 = Equipment Numeral

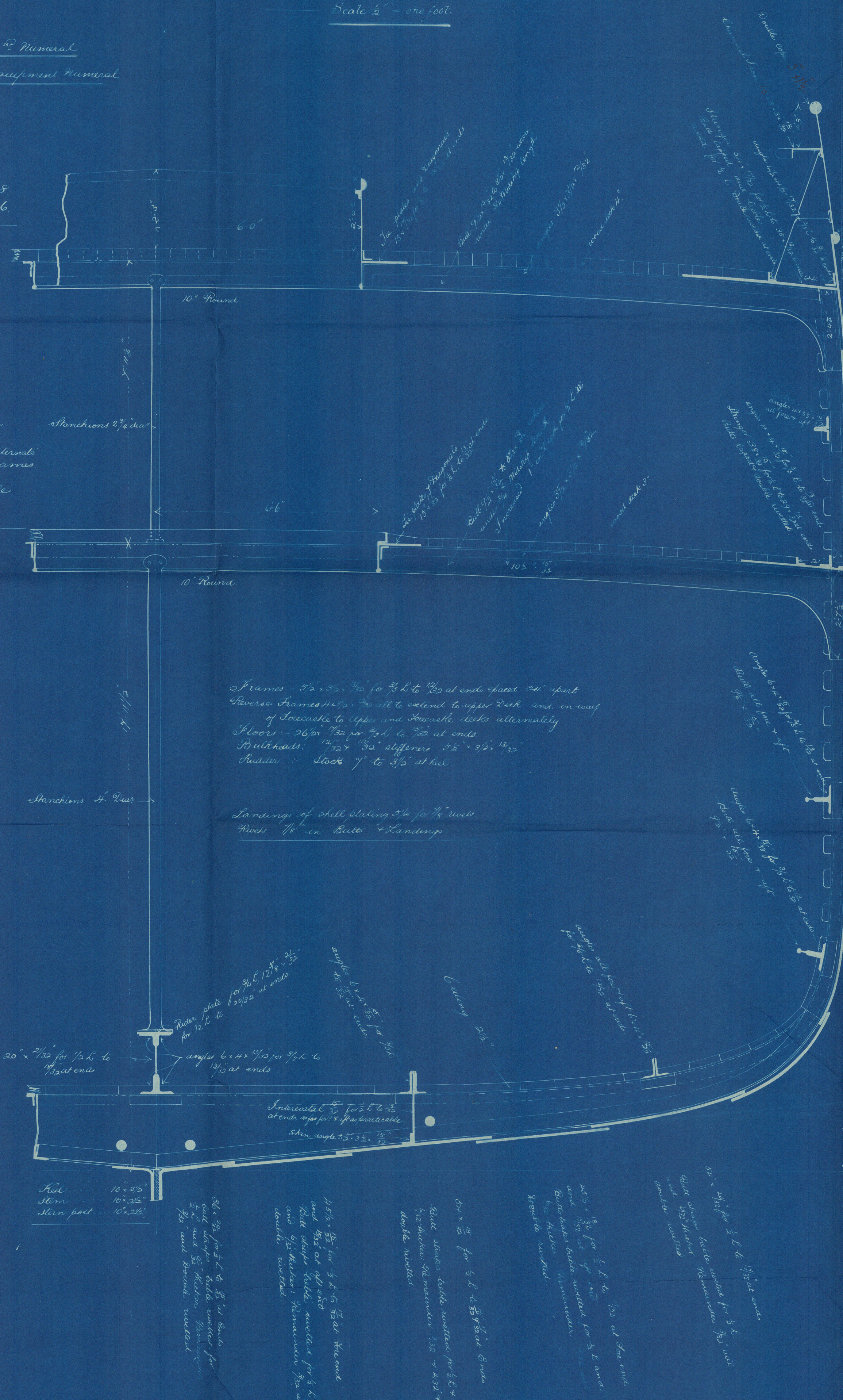
## Proportions

Breadth ----- 6' 438  
 Depth ----- 9' 966

## Equipment

3 Bowers 38 cut collective weight 1052. Ex stock.  
 1 Stream 112 " Ex stock  
 1 Kedge 5 1/2 " "  
 270 Tackles 2" steel chain cable  
 78 1/4 Stream " or 1/4 steel wire  
 90 15" Pump or " "  
 90 " 1" Snapper  
 90 " 7" Pump

Pop + Foremast Side Plating 12 1/2  
 " " " " 11 1/2 x 1/2  
 Foremast Beam + Hull 7 1/2 x 1/2 on alternate  
 " " " " 5 1/2 x 1/2 frames  
 Poop beam built angle 7 x 3 1/2  
 Poop stringer 1/2" Rounding at Gunwale  
 Foremast 24 x 1/2 butts lapped and  
 double riveted.



Bulkhead 4 1/2 Beam  
 Bulk double riveted  
 3 1/2 x 1 1/2  
 Shearstrake 1/2 x 1/2 for 1/2 h to 1/2 at  
 the end and 1/2 at aft end  
 Butt straps table riveted for 1/2 h and  
 1/2 thicker. Remainder 1/2 and 1/2 and  
 double riveted

5 1/2 x 3/4 for 1/2 h to 1/2 at end  
 Butt straps table riveted for 1/2 h and  
 1/2 thicker. Remainder 1/2 and 1/2 double riveted.

12 1/2 x 3/4 for 1/2 h to 1/2 at the end  
 + 1/2 at aft end  
 Butt straps table riveted for 1/2 h and  
 1/2 thicker. Remainder 1/2 and  
 double riveted

5 1/2 x 3/4 for 1/2 h to 1/2 at end  
 Butt straps table riveted for 1/2 h and  
 1/2 thicker. Remainder 1/2 and 1/2  
 and double riveted

12 1/2 x 3/4 for 1/2 h to 1/2 at the end  
 and 1/2 at aft end  
 Butt straps table riveted for 1/2 h and  
 1/2 thicker. Remainder 1/2 and 1/2  
 double riveted.

5 1/2 x 3/4 for 1/2 h to 1/2 at end  
 Butt straps table riveted for 1/2 h and  
 1/2 thicker. Remainder 1/2 and 1/2  
 double riveted.

Note: Butt Straps of outside Straps where  
 over 1/2 and under 1/2 board and of  
 inside Straps where over 1/2 and  
 under 1/2 board to be increased 1/2  
 in thickness + table riveted

4 1/2 x 3/4 for 1/2 h to 1/2 at the end  
 and 1/2 at aft end  
 Butt straps table riveted for 1/2 h and  
 1/2 thicker. Remainder 1/2 and 1/2  
 double riveted



Ship "Cromdale" Glasgow Report No. 10756



© 2021

Lloyd's Register  
Foundation

615223-0099