

THU 18 AUG 89
THU 19 SEP 3

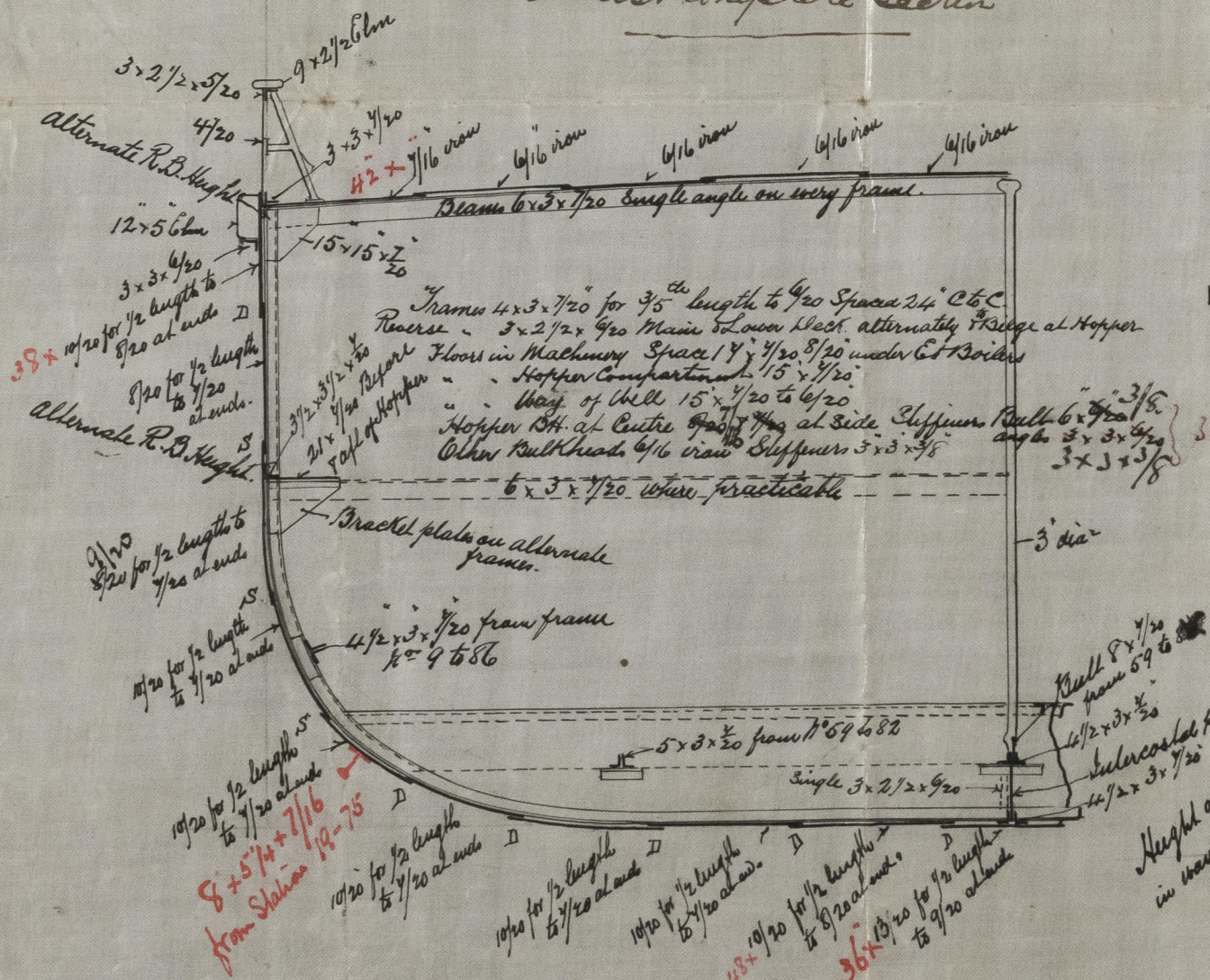
5/8/89
H.L.D.

Half m. breadth . . . 19.25
Depth . . . 17.50
Total girth of
half B section } . . . 31.91
68.66
184
12638.44

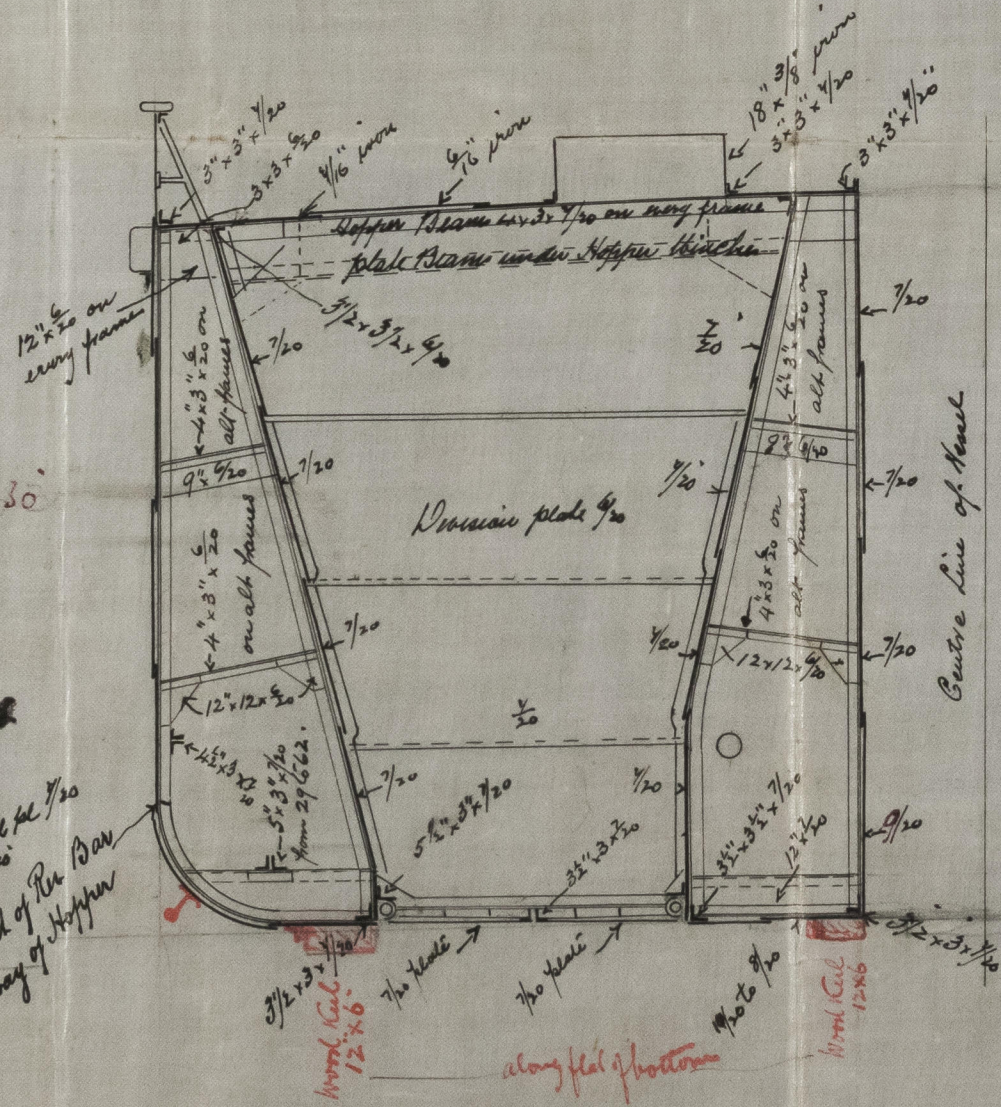
Sections of Hopper Dredger

185.0 x 39.0 x 16.6 moved amidships. No. 279
185.0 x 39.0 x 16.6 moulded.
38.6 Scale 1/4" = 1 foot

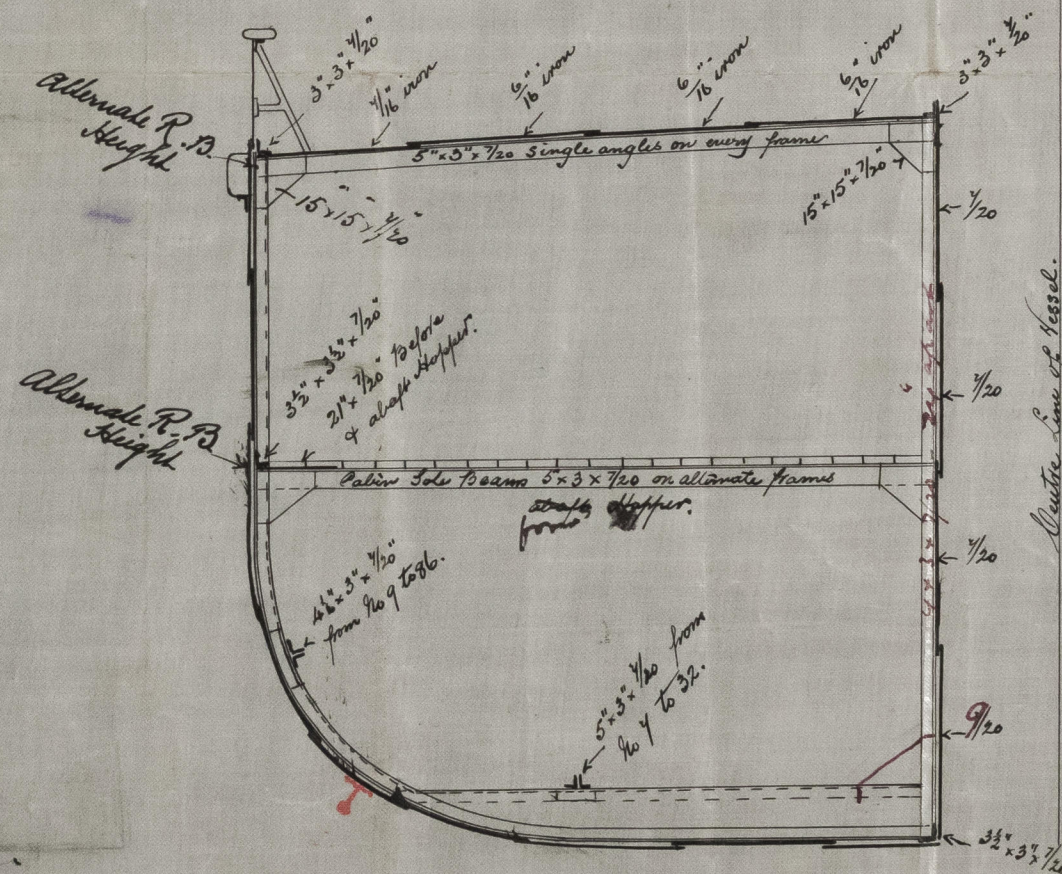
Section thro B Fuller complete section



Section thro C. Steel



Section thro A



- Riving - seams of shell plates from
Keel to Bilge also lower edge of shear strake
Double riveted Sides of keel, single riveted
All Butts of shell double riveted with 3/4\" rivets
Seams of Hopper & Well plating Single riveted with 3/4\" rivets
Butts \" \" Lapped & double riveted \" \"
Butts of Stringer plate, Staircase & double riveted with 3/4\" rivets
remainder of deck plates Lapped & single riveted with 5/8\" \"
Seams of deck single riveted with 5/8\" rivets
Butts of Bulwark Single riveted with 5/8\" rivets

W. SIMONS & CO.
LONDON WORKS,
RENFREW.

Glasgow Report No. 1004.

Handwritten signature or calligraphy.

[illegible]

此乃一書

GLS220-0019

1834

© 2021

Lloyd's Register
Foundation