

MIDSHIP SECTION OF S.S. N^o 211.

TO CLASS 100 A.I., SPAR DECK, STEEL.

SCALE 1/2 INCH = 1 FOOT.

THU 7 MAR 89
FRI 16 APR 89
WED 10 APR 89
SAT 27 APR 89
SAT 18 MAY 89

Forecastle Beams - T Bull 7 1/2" Iron, on alt. frames
Forecastle Stringer 30" x 6 1/2" Iron
" " Angle 3" x 3" x 7/16" Iron.

Proportions
Breadth in length 7.9
Depth to Main Deck 16.95
Minus one Depth 1.00
15.95

Numerals
1/2 Breadth 19.50
1/2 Girth 32.29
Depth to Main Deck 18.18
70.97
70.97 x 308.33 = 21752 = Scantling N^o

Numerals
1/2 Breadth 19.50
1/2 Girth 40.63
Depth to Spar deck 25.92
86.05
86.05 x 308.33 = 26479.8
Add .75 of 3335 = 2506.2
Equipment N^o 29038.0

Length of Poop 186 feet
Forecastle 46
= .75 of 308.33

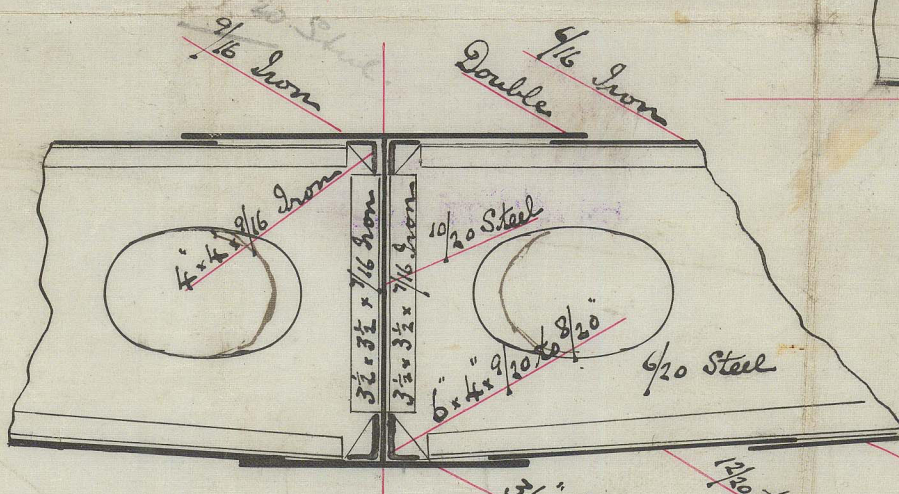
Equipment

2 Bower Anchors, ea Stock 34 Cuts
1 Stream " " 29
1 Kedge " " 10 3/4
1 " " 5 1/2
1 " " 2 1/2
270 fathoms 1 1/4" Stud Chain Cable
75 " 1 1/4" Stream Chain
100 " 12" Hauler or 4" steel wire
90 " 9 1/2" Hauler
90 " 8" Warp.

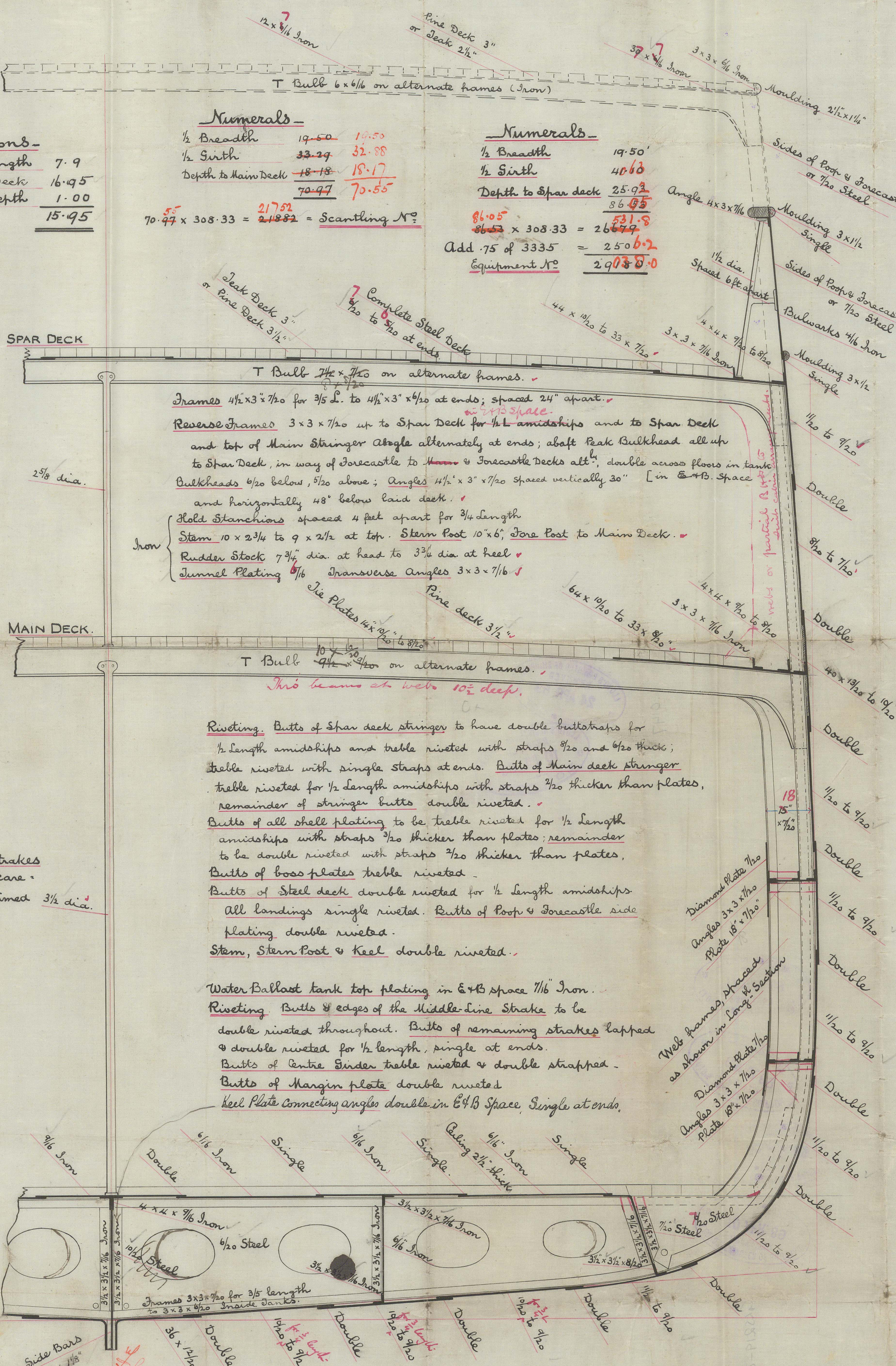
Sarboard Strakes and after hoods of plating connected to stern frame to be of same thickness as respective strakes amidships
Boss Plates to be 1/2" thicker than plates amidships.

All Stringer plates, Sheerstrakes, Sarboard strakes and all Buttraps above 5/8" thick to be carefully annealed on the holes sufficiently rimmed after punching

Floor plates as shown on every frame continuous from Centre Girder to Margin Plate.

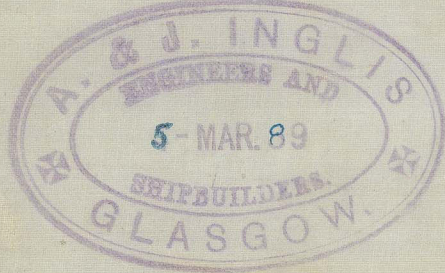


Alternative if Flat Plate Keel be fitted
Ships to be fitted in one length from side to side.



Star Sheerstrake increased in breadth to 45" to compensate for sidelights 12" dia. fitted from 8 to 10 feet apart.
Sheerstrake doubled for about 20 feet in way of break of poop.

Main Sheerstrake doubled with 10/20 plating for 3/4 length amidships.

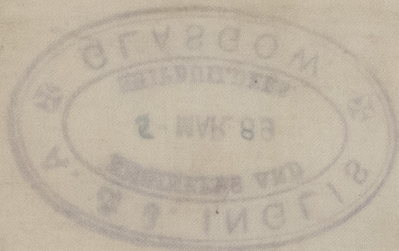


7/3/89

SS "Wodonga"

Gls Report N^o 9977

1/3/89
J.S.



GLS219-0147

Length of Porth 186 feet
Forecastle 46
232
75 of 308 33

Spur Sheerstrake increased in breadth
to 45" to compensate for sidelights 15"
dia fitted from 8 to 10 feet apart
Sheerstrake doubled for about 20 feet
in way of beams of porth.



© 2021

Lloyd's Register
Foundation