

19 AUG 89  
TUE 15 OCT 89

29/7/89  
H.L.D.

# SECTIONS OF T.S.S. N<sup>o</sup> 148.

TO CLASS 100-A. STEEL AT LLOYDS.

SCALE 1/2 INCH TO ONE FOOT.

## MIDSHIP SECTION.

NUMERALS TO QUARTER DECK

|             |        |
|-------------|--------|
| 1/2 GIRTH   | 31.79  |
| 1/2 BREADTH | 15.41  |
| DEPTH       | 19.64  |
| LENGTH      | 146.27 |

PROPORTIONS

|                       |
|-----------------------|
| $\frac{L}{B} = 4.08$  |
| $\frac{L}{D} = 11.14$ |

1<sup>st</sup> 11<sup>th</sup>

2<sup>nd</sup> 11<sup>th</sup>

146.27 26.56

Depth moulded 15.50  
Ramp Rule 16.14

NUMERALS TO MAIN DECK

|             |        |
|-------------|--------|
| 1/2 GIRTH   | 25.29  |
| 1/2 BREADTH | 15.41  |
| DEPTH       | 16.14  |
| LENGTH      | 130.95 |

PROPORTIONS

|                       |
|-----------------------|
| $\frac{L}{B} = 4.08$  |
| $\frac{L}{D} = 13.32$ |

1<sup>st</sup> 11<sup>th</sup>

2<sup>nd</sup> 11<sup>th</sup>

130.95 38.56

EQUIPMENT

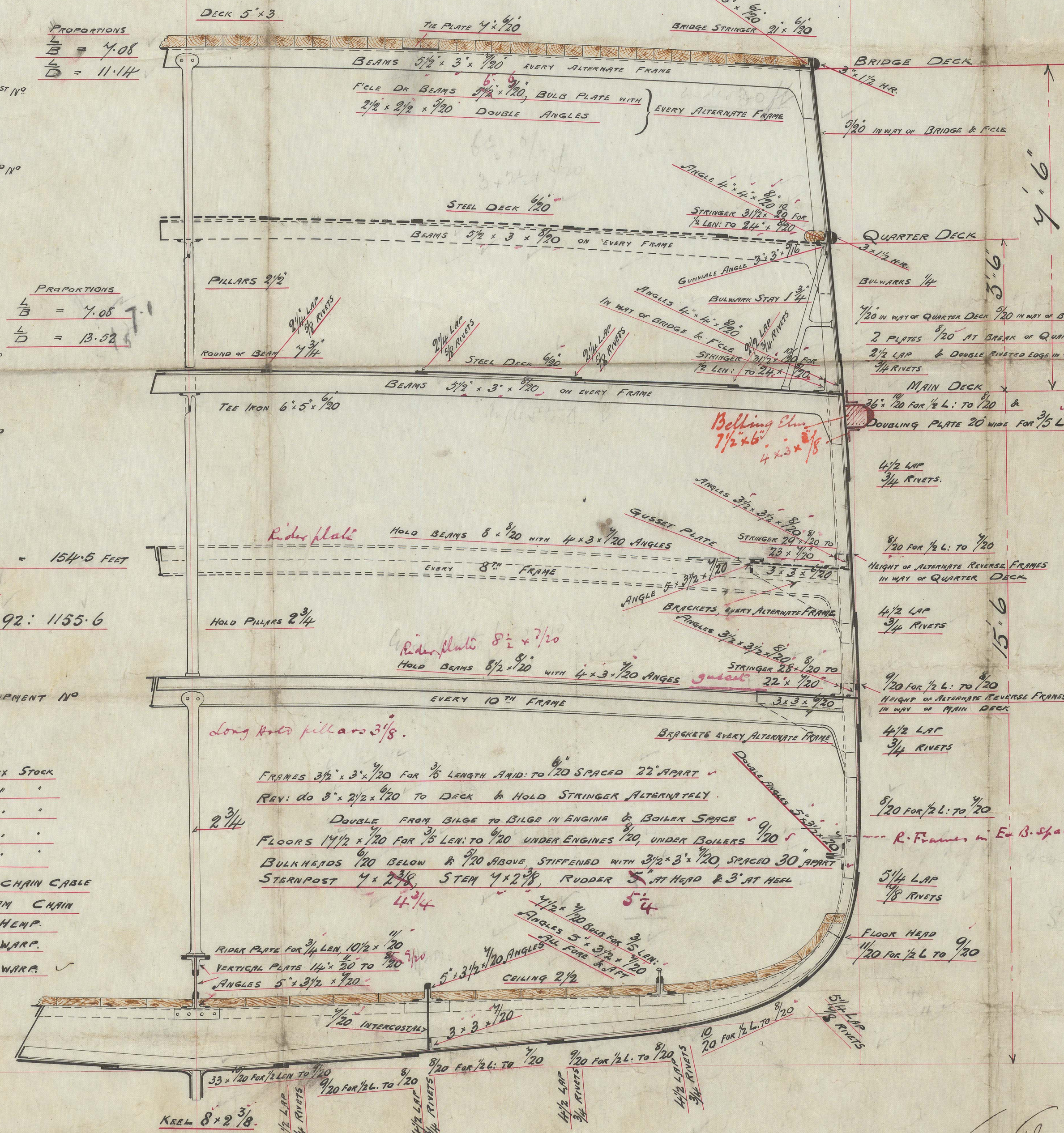
| NUMERALS                     | NUMERALS   |
|------------------------------|------------|
| COMBINED LENGTH OF ERECTIONS | 154.5 FEET |
| 130.95                       | 1636.92    |

218.84 : 154.5 :: 1636.92 : 1155.6

130.95 .38  
1155.6  
14250.98 EQUIPMENT NO

EQUIPMENT

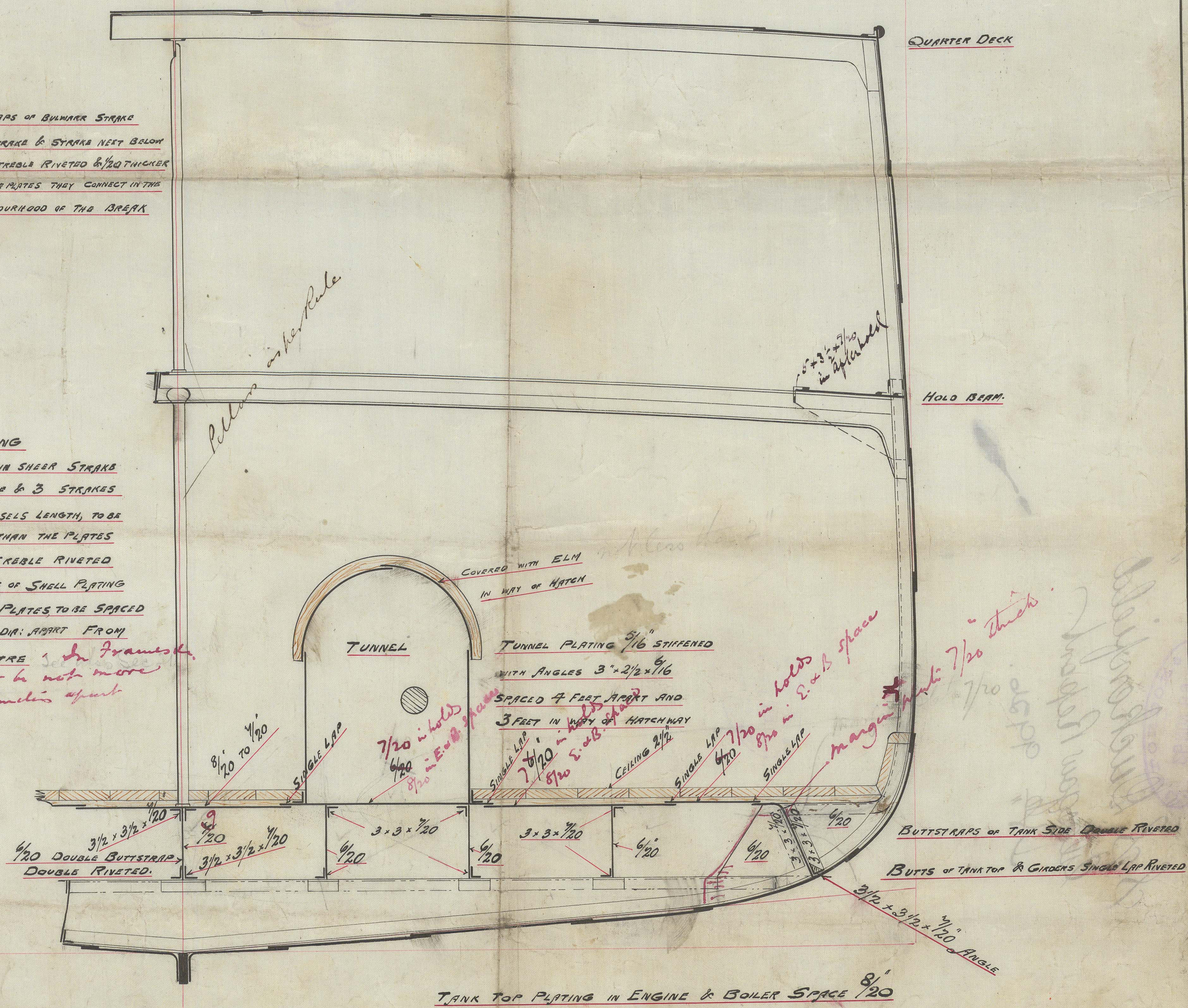
|             |             |                  |
|-------------|-------------|------------------|
| 2 BOWERS    | 18 CWT EACH | EX STOCK         |
| 1 BOWER     | 15 1/2      | "                |
| 1 STRENGTH  | 6 1/2 CWT   | "                |
| 1 KEDGE     | 3 1/2 CWT   | "                |
| 1 -DO-      | 1 1/2       | "                |
| 240 PETHONS | 1 1/2       | STUD CHAIN CABLE |
| 60          | 1 1/2       | STRENGTH CHAIN   |
| 90          | 9 1/2       | HEMP             |
| 40          | 4 1/2       | WARP             |
| 90          | 5 1/2       | WARP             |



## SECTION THRO' AFTER BALLAST TANK

NOTE  
BUTTS OF BULKHEAD STIFFERS  
SHALL BE RIVETED 1/20 THICKER  
TO BE THREADED RIVETS 1/20 THICKER  
THAN THE PLATES THEY CONNECT IN THE  
NEIGHBOURHOOD OF THE BREAK

RIVETING  
BUTTS OF MAIN SHEAR STIFFERS  
DECK STIFFER PLATE & 3 STIFFERS  
AT BILGES FOR 1/2 VESSEL LENGTH, TO BE  
1/20 INCH THICKER THAN THE PLATES  
THEY CONNECT & TREBLE RIVETED  
THE RIVETS IN BUTTS OF SHELL PLATING  
& DECK STIFFER PLATES TO BE SPACED  
NOT MORE THAN 3 1/2 DIA. RIGHT FROM  
CENTRE TO CENTRE 1 1/2 DIA. FROM  
THE RIVETS TO BE NOT MORE  
THAN 7 DIAMETER APART



See Letter to  
878989.

GLS219-0070



ONDS REGISTER OF SHIPPING  
RECEIVED  
25 NOV. 89  
LONDON

S. S. Duckenfield  
Glasgow Report  
No 9926.

© 2021

Lloyd's Register  
Foundation