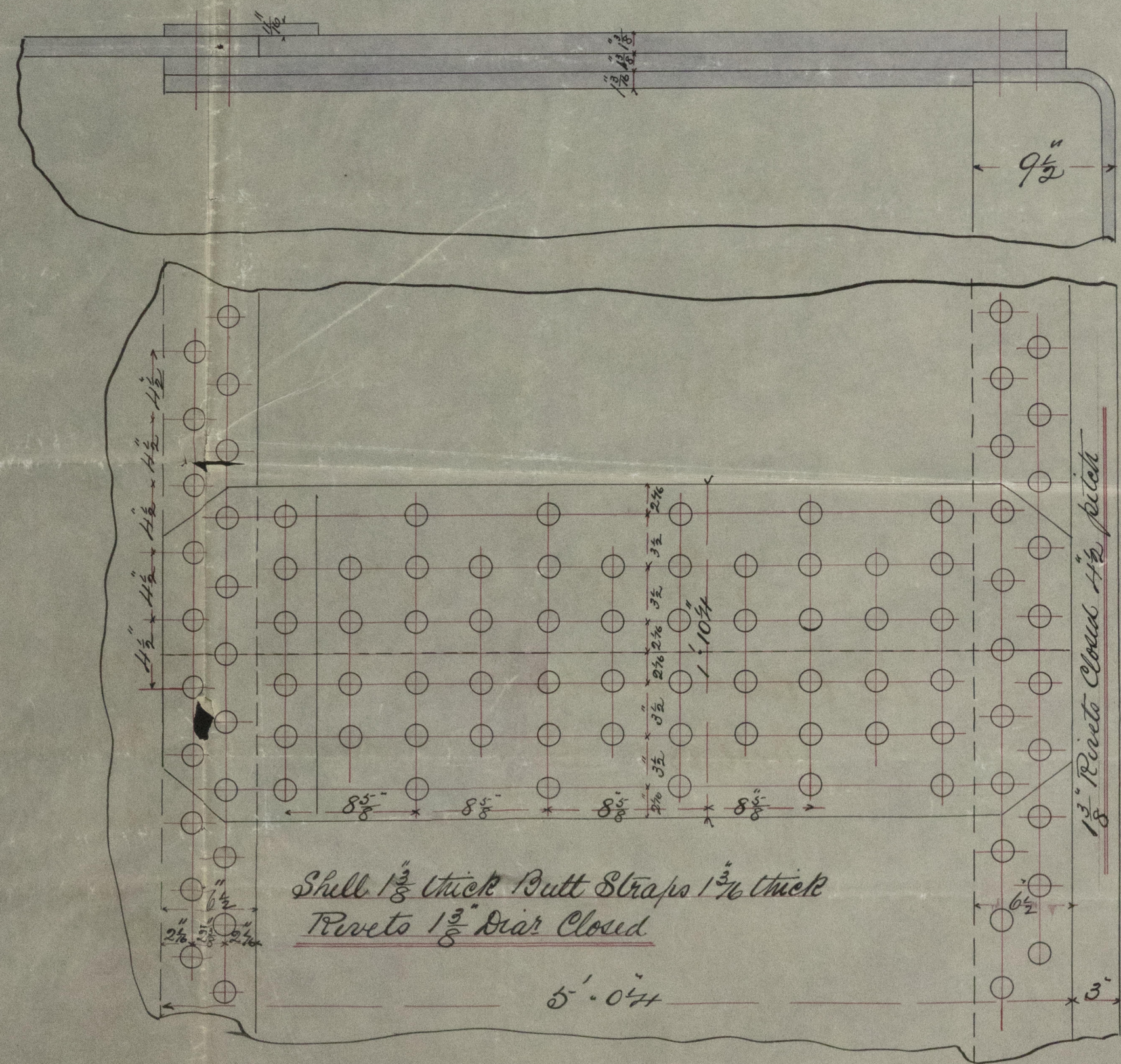


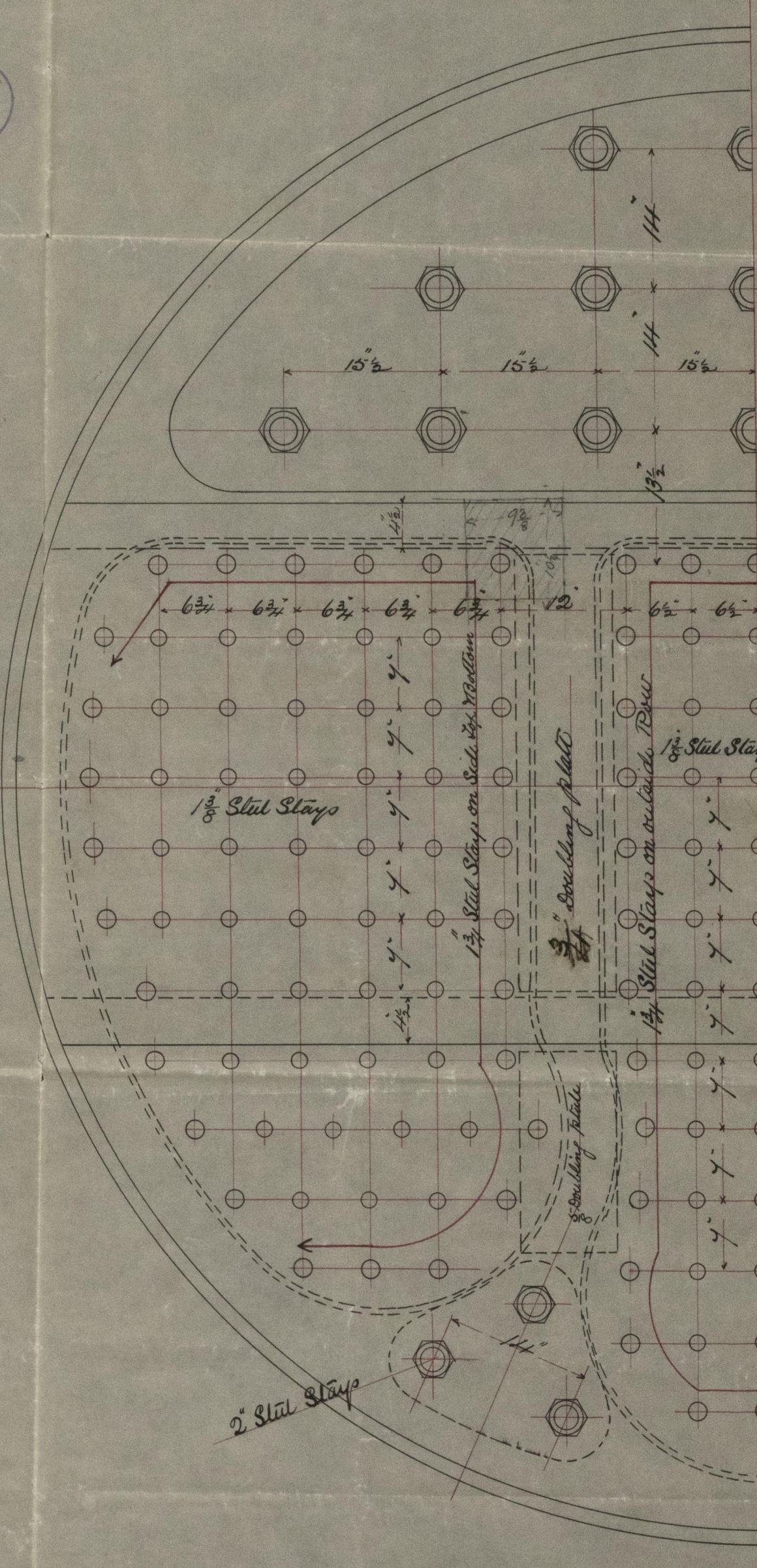
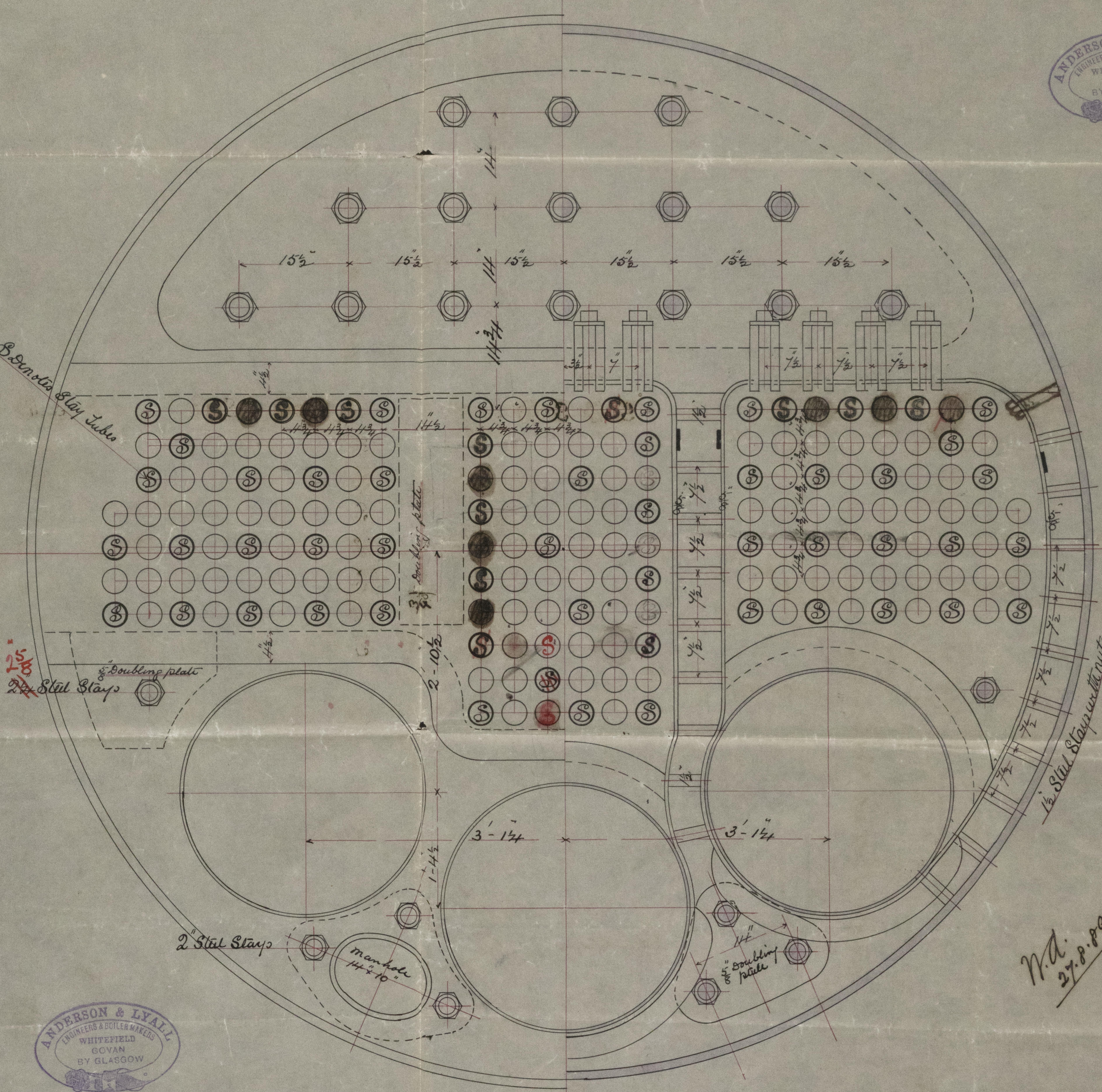
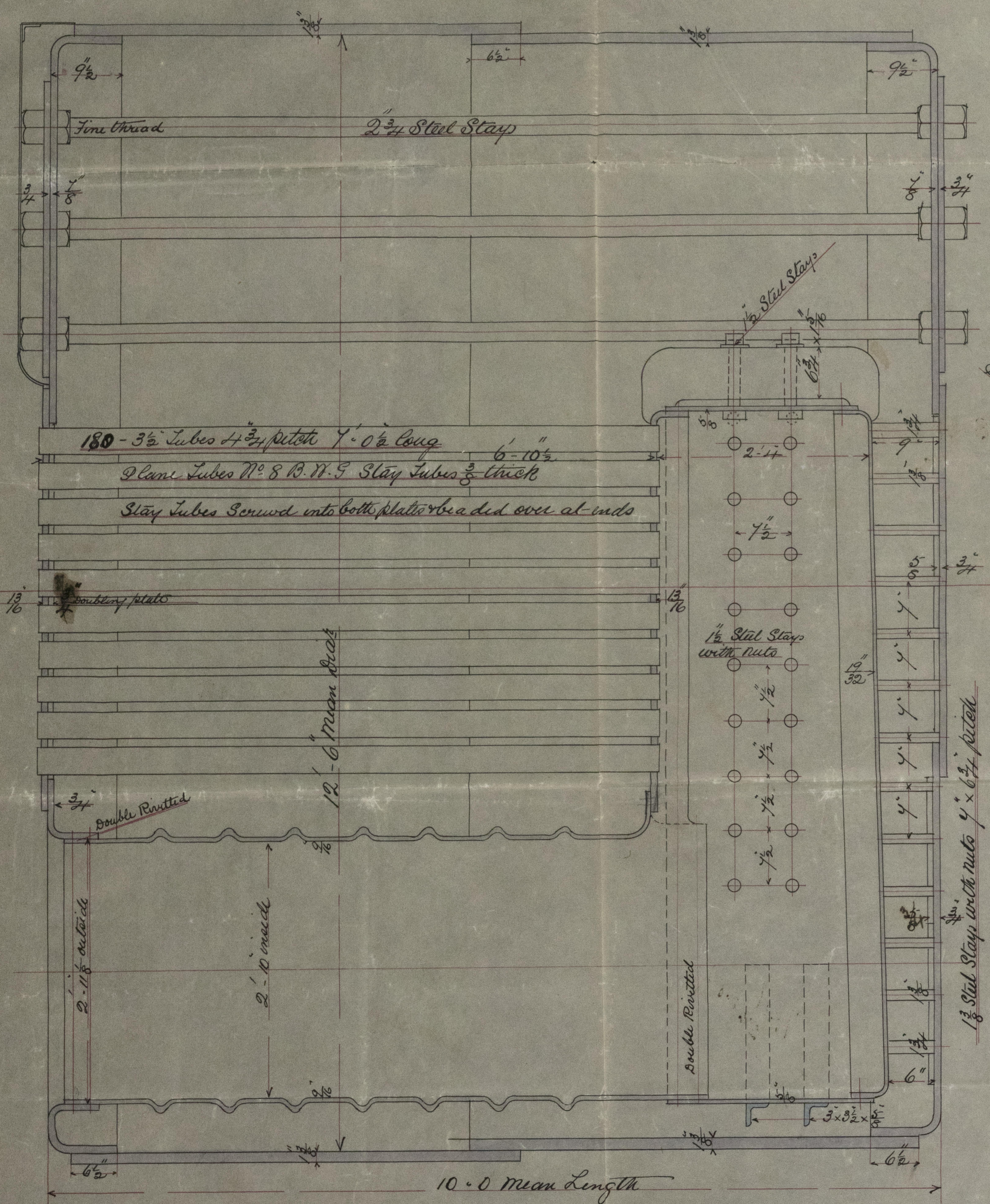
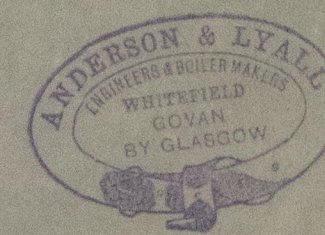
hr. 27: 8: 89.



Shells 1 1/2" thick Butt Straps 1 3/4" thick
Rivets 1 1/2" Bar Cloud

5'-0 1/4"

Boilers No 186
12'-6" dia. x 10'-0" long Pressure 200 lbs per square inch
Boilers of Steel Throughout Tubes of Iron
Scale 1 inch = one Foot
22nd Augt 1889



10-25 x 9-3/4 x 204 - 2-1/2" dia. = 1 1/2"
8 x 40
10-25 x 9-3/4 x 204 - 2-1/2" dia. = 1 1/2"
9 x 40



MA.
27.8.89

Anderson & Lyall

No. 186 Br

Fleming & Ferguson Eng. No.

Fleming & Ferguson Ship No.

S. S. Duckenfield
Glasgow Report
No. 9926.

GLS219-0068

200 lbs per square inch

of Tubes of Iron

1 inch = one Foot

22nd Augt 1889

© 2021

Lloyd's Register
Foundation

