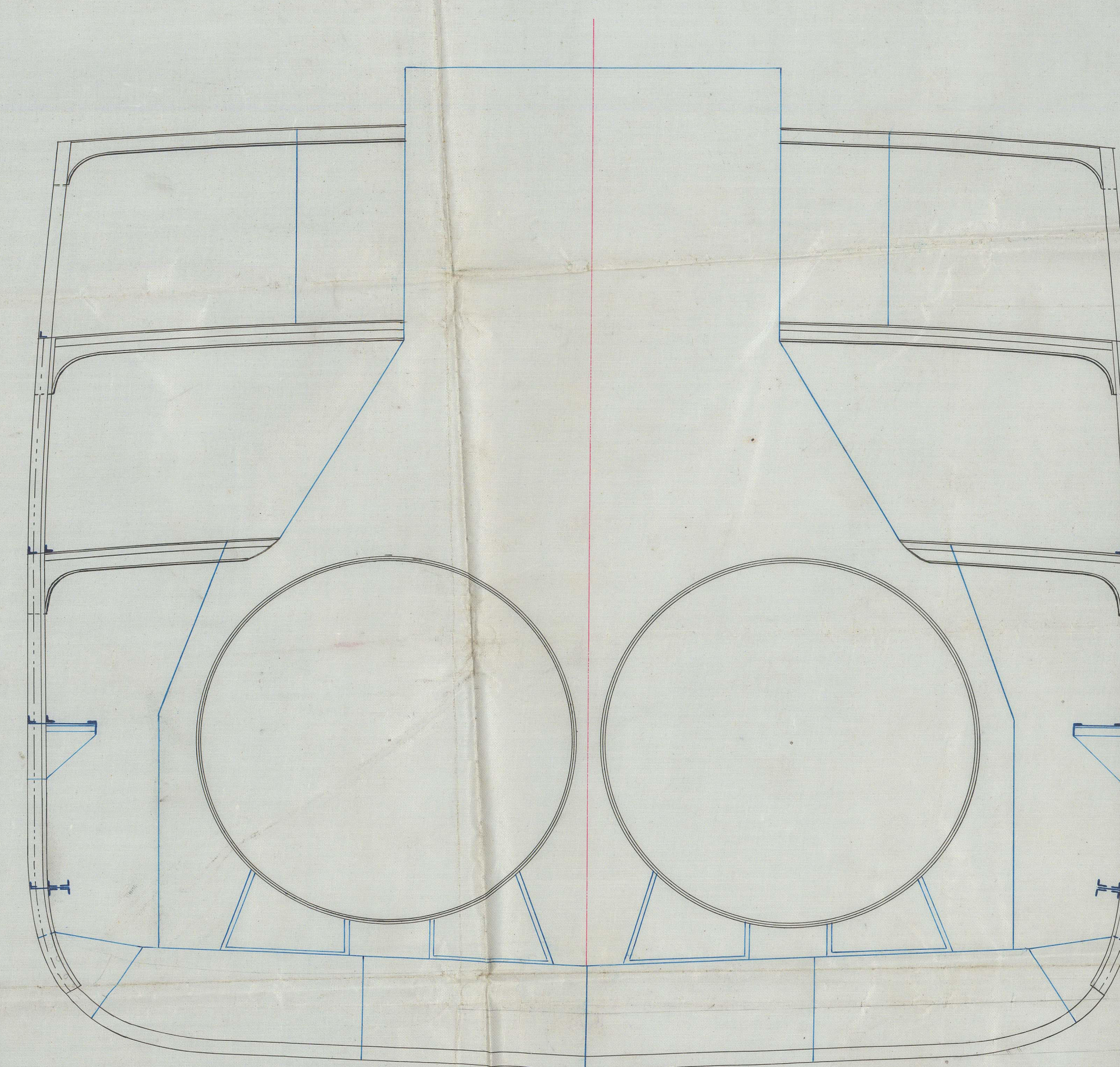
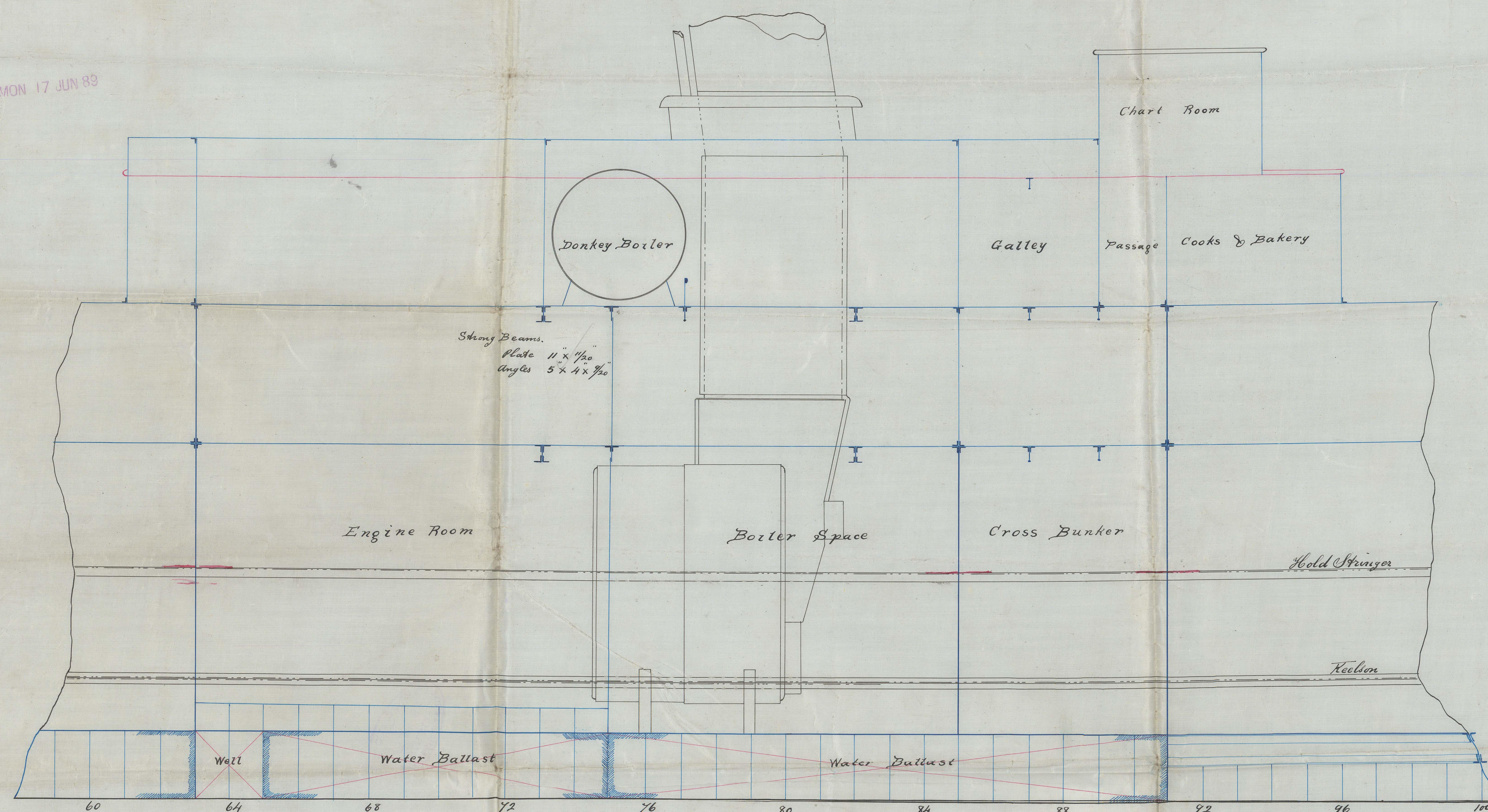


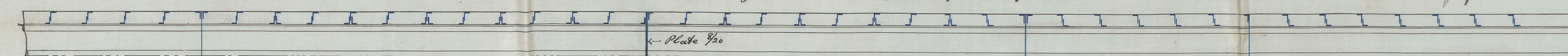
MON 17 JUN 89

10/10/89
 10/10/89
 10/10/89



Section Through Boiler Space

Double reverse bars on alternate frames to M.D. in Engine and Boiler space. Single reverse frames all to Upper Deck in 8" & 6" space $5\frac{1}{2} \times 3\frac{1}{2} \times \frac{3}{16}$ being equal to the size of the reverse frame as was approved by the Committee in S.S. No 345 27.6.89.



Bunker

Frames $6 \times 3\frac{1}{2} \times \frac{3}{16}$
 Riv. — $5\frac{1}{2} \times 3\frac{1}{2} \times \frac{3}{16}$

10/6/89
 S.S. No 346

PLAN SHOWING ARRANGEMENT OF STRONG FRAMES

IN WAY OF MACHINERY SPACE

S. S. No 346

Scale $\frac{1}{4}" = 1 \text{ Foot}$

29 Jan 90

REGISTER OF SHIPS
 28.6.89

REGISTER OF SHIPS
 28.6.89

S. S. "Brazilian"
Glasgow Report
No 9494. —

GLS 218-0065

Engine Room



© 2021

Lloyd's Register
Foundation