

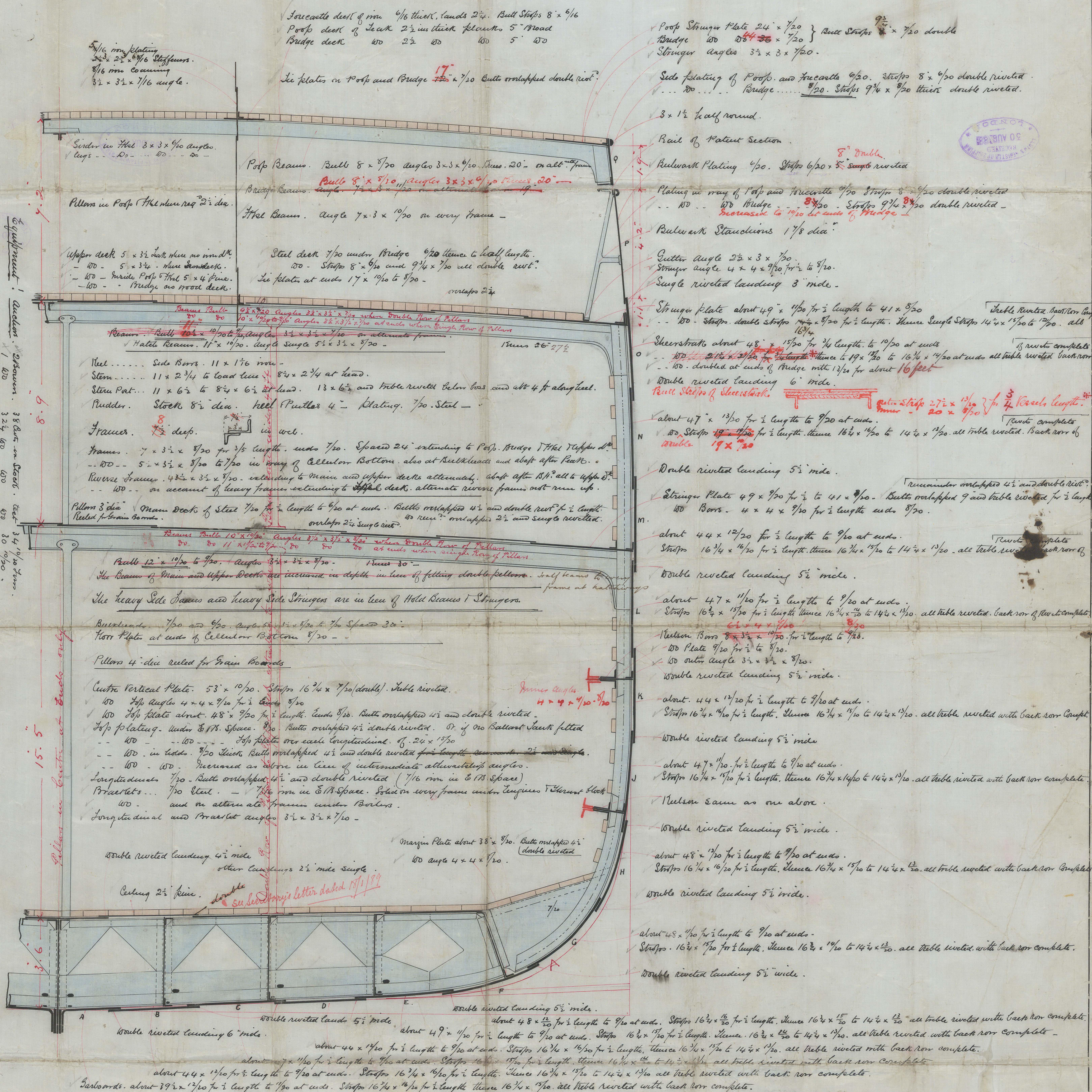
5/3. "Strathclyde" Gl. 9078

| | |
|-----------------------------------|-------|
| Length as per Rule | 338.3 |
| Half Moulded Breadth | 22.62 |
| Depth from Top of Keel | 27.66 |
| Half Midship Girth | 45.58 |
| Depth top of Keel to Main deck .. | 18.91 |

Numerals.

$22.62 + 27.66 + 45.58 - 7 \dots \dots \dots = 88.86$ *Swanstrup*
 $00 + 00 + 00 - 00 \times 338.3 \dots = 30061.33$ *Longitudinal*
 $00 + 00 + 00 \times 338.3 + \frac{5}{10} \times 98 = 34456.26$ *outfit.*

Proportions. $338.3 \div 45.24 = 7.47$ Moulded Breadths
 $338.3 \div 27.66 = 12.23$ Depths to upper deck.



Note! Since this section was drawn Bridge filled out to line shown in red at A. The Numerals, however, are increased to the altered fuller form.

Plating. The plate forming Box, and the plate along and below same to be ²/₃ thicker than their plate and overlaps ^{from frame to same} remainder of after-boards of Plating same thickness as their plate and overlaps -

Material - The Reef Side Plate. Stem. Stern Post. Rudder. Hold Pillars.
Shaft. Inboard and Outboard. Engine. 170 in Seating. Rudders and
much deep Plate. Hatch plate. Prop. Bridge and Sonarite Bulkhead
Plate. Bulkhead Timbers. Engine 170 in. Casings. Machinery Reinforced
-work in E. 170. Space. and if Owners desire 40 Plateing of 875 in E. 170. Space
Slip on. and rivets to be of iron. Other material in this
Section under otherwise specified to be of Steel -

Alex^r, Stephen & Sons,
SHIPBUILDERS & ENGINEERS,

SHIPBUILDERS & ENGINEERS
J. L. Feb. 19. 6. 88 GLASGOW

DRAWING NO 4539

18/6/88 Mum

SECTION AT ALTERNATE FRAMES ON WHICH NO BRACKETS ARE FITTED.

8008 2/2

(Faint handwritten notes at the bottom of the page, likely bleed-through from the reverse side.)

the plates in 900 and 1000 1/2

$37 \times 37 \times \frac{1}{2}$ and
 $37 \times 37 \times \frac{1}{2}$ and
 $37 \times 37 \times \frac{1}{2}$ and
 $37 \times 37 \times \frac{1}{2}$ and

10/10 x 10/10 for 1/2 length of 1/2 of each
 10/10 x 10/10 for 1/2 length of 1/2 of each

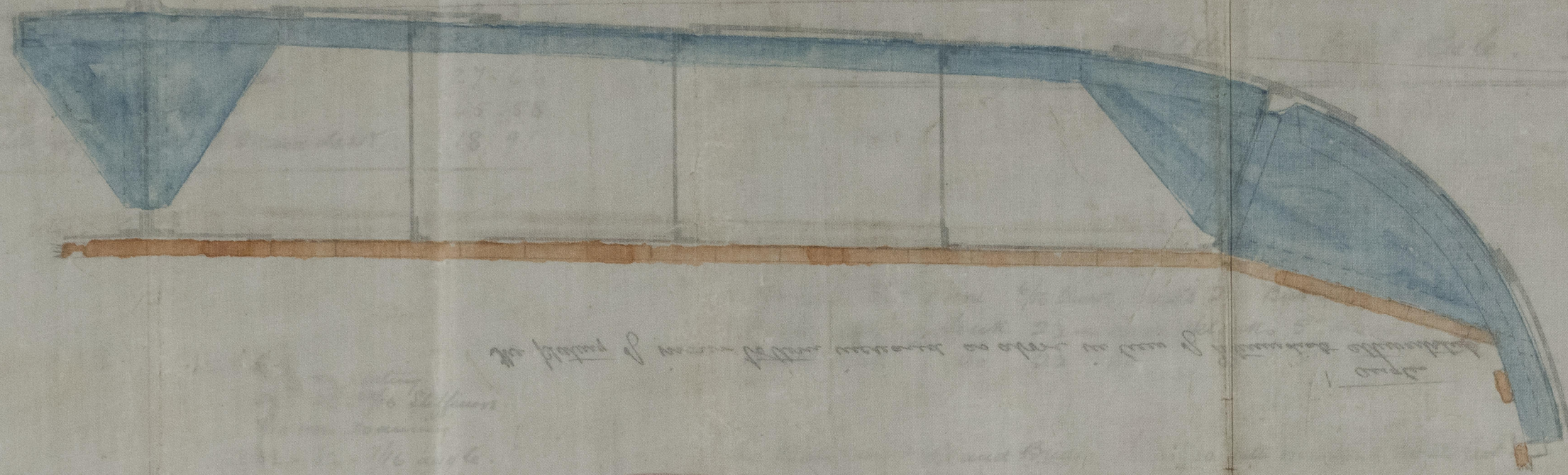
RECEIVED
20 JUN. 33

GLS213-0087

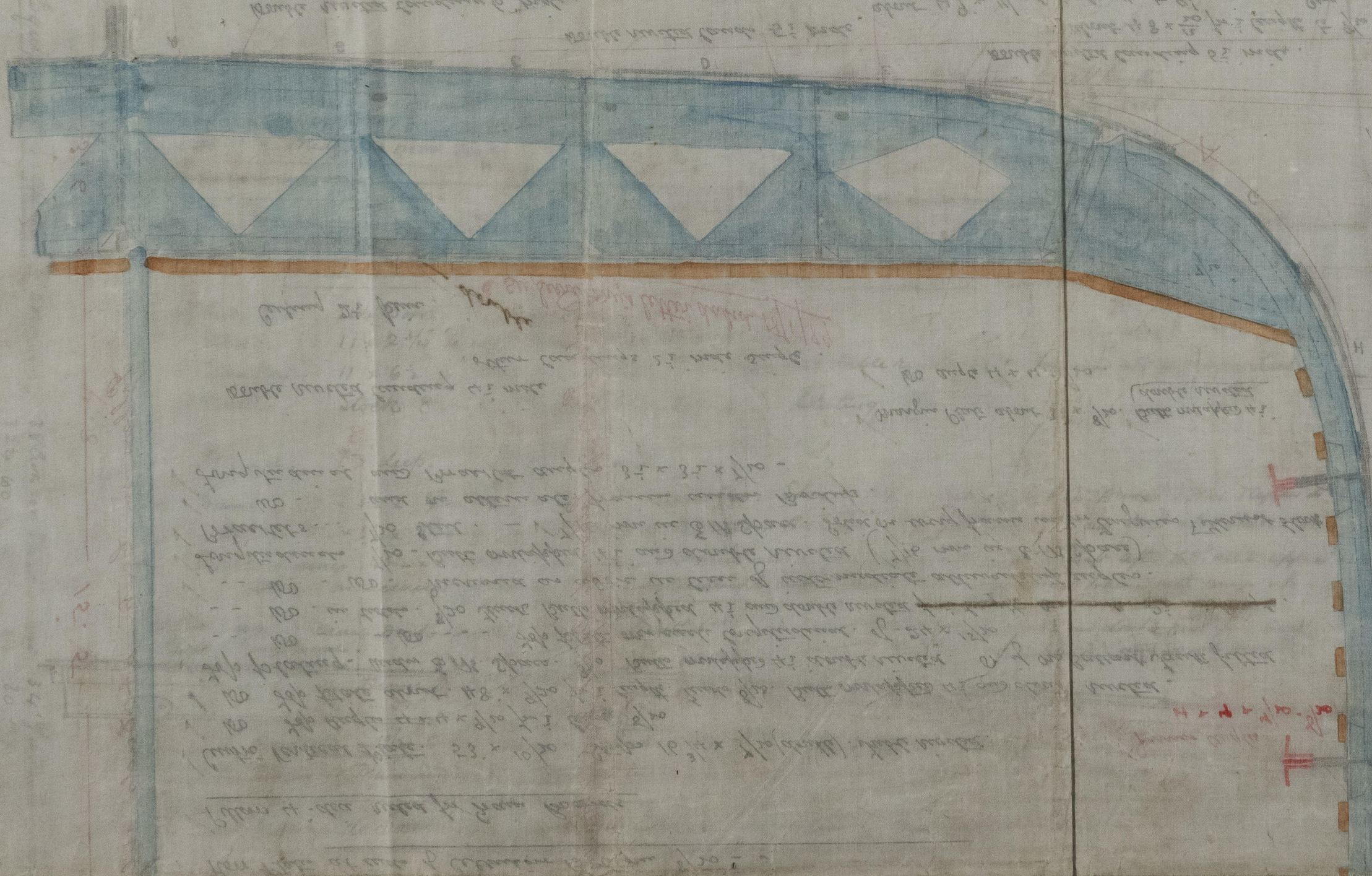
PLAN OF THE

STEEL SKELETON STEAMER

SECTION AT MIDSHIP FRAME ON WHICH NO BULKHEADS ARE ERECTED



SECTION AT MIDSHIP FRAME ON WHICH NO BULKHEADS ARE ERECTED



STEAMER

STEEL SKELETON STEAMER

SECTION AT MIDSHIP FRAME ON WHICH NO BULKHEADS ARE ERECTED

GLS213-0087