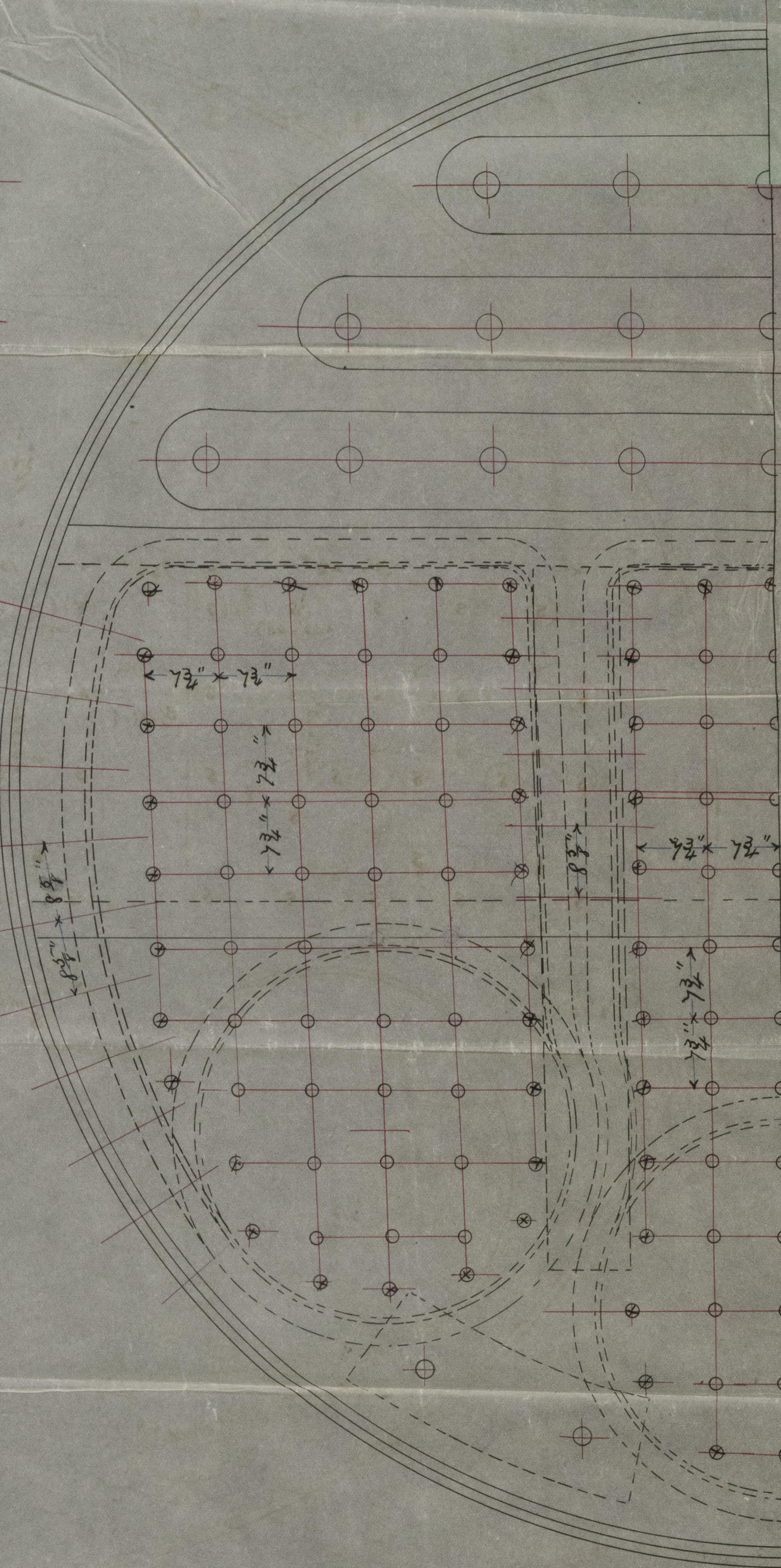
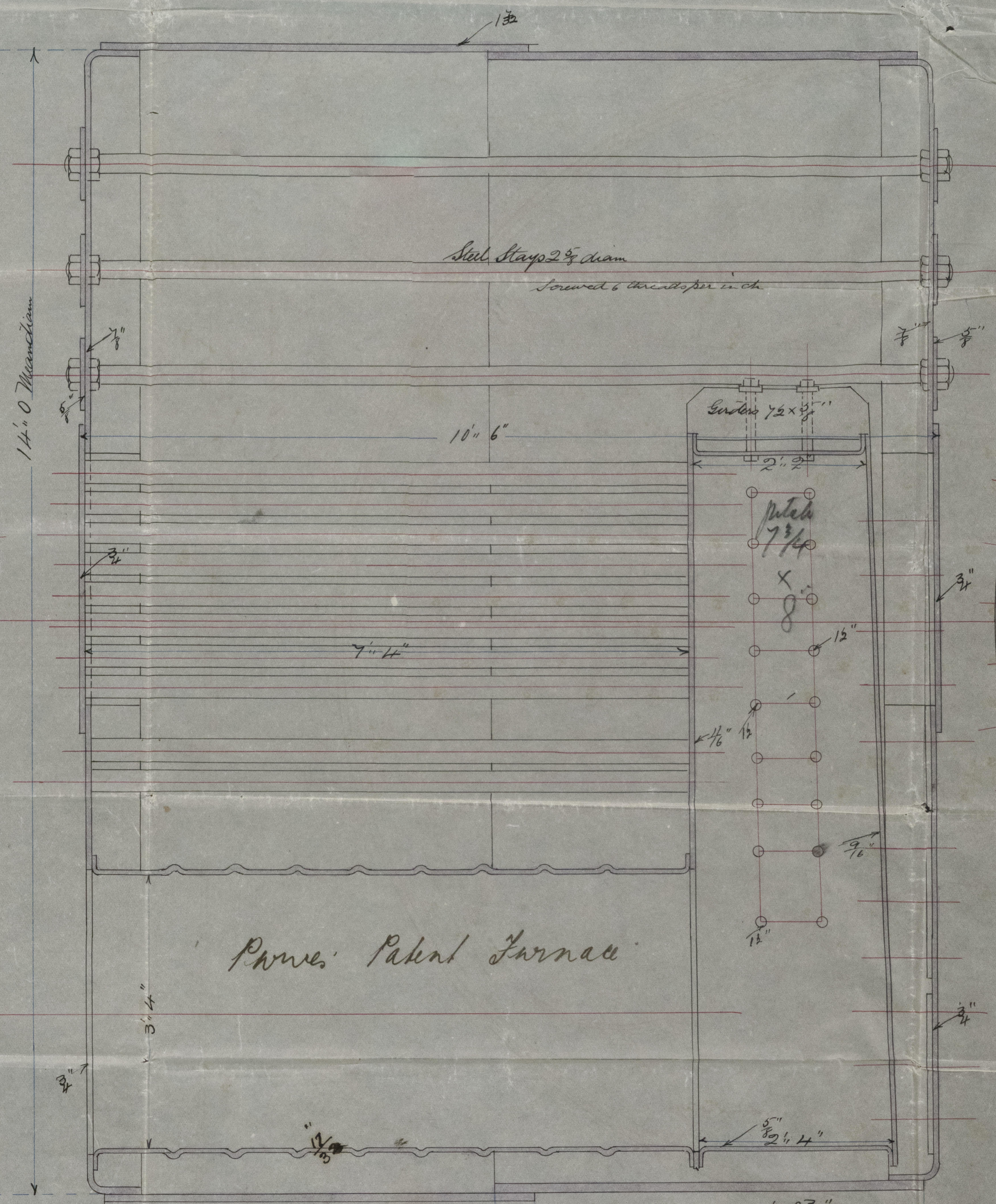
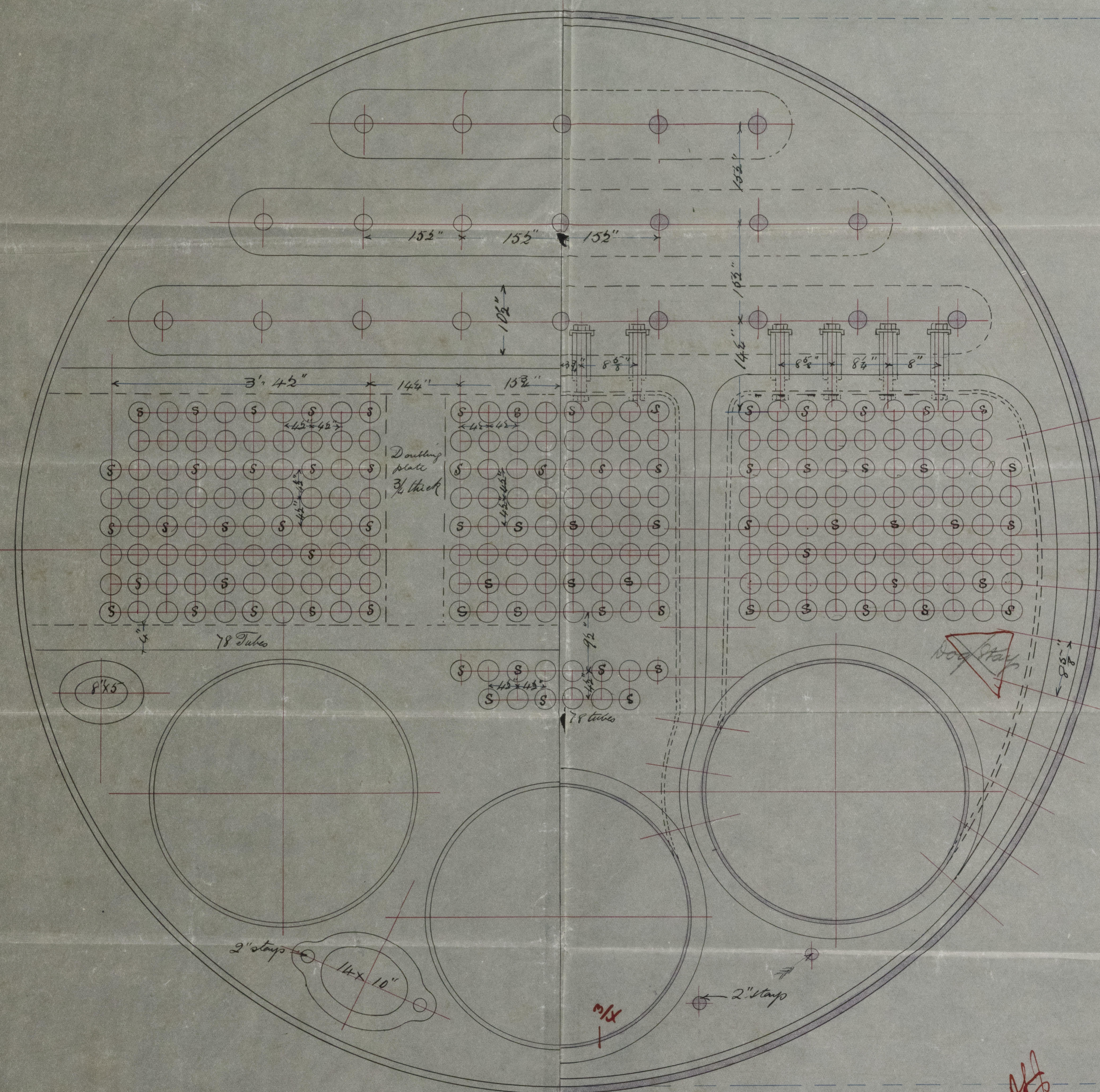


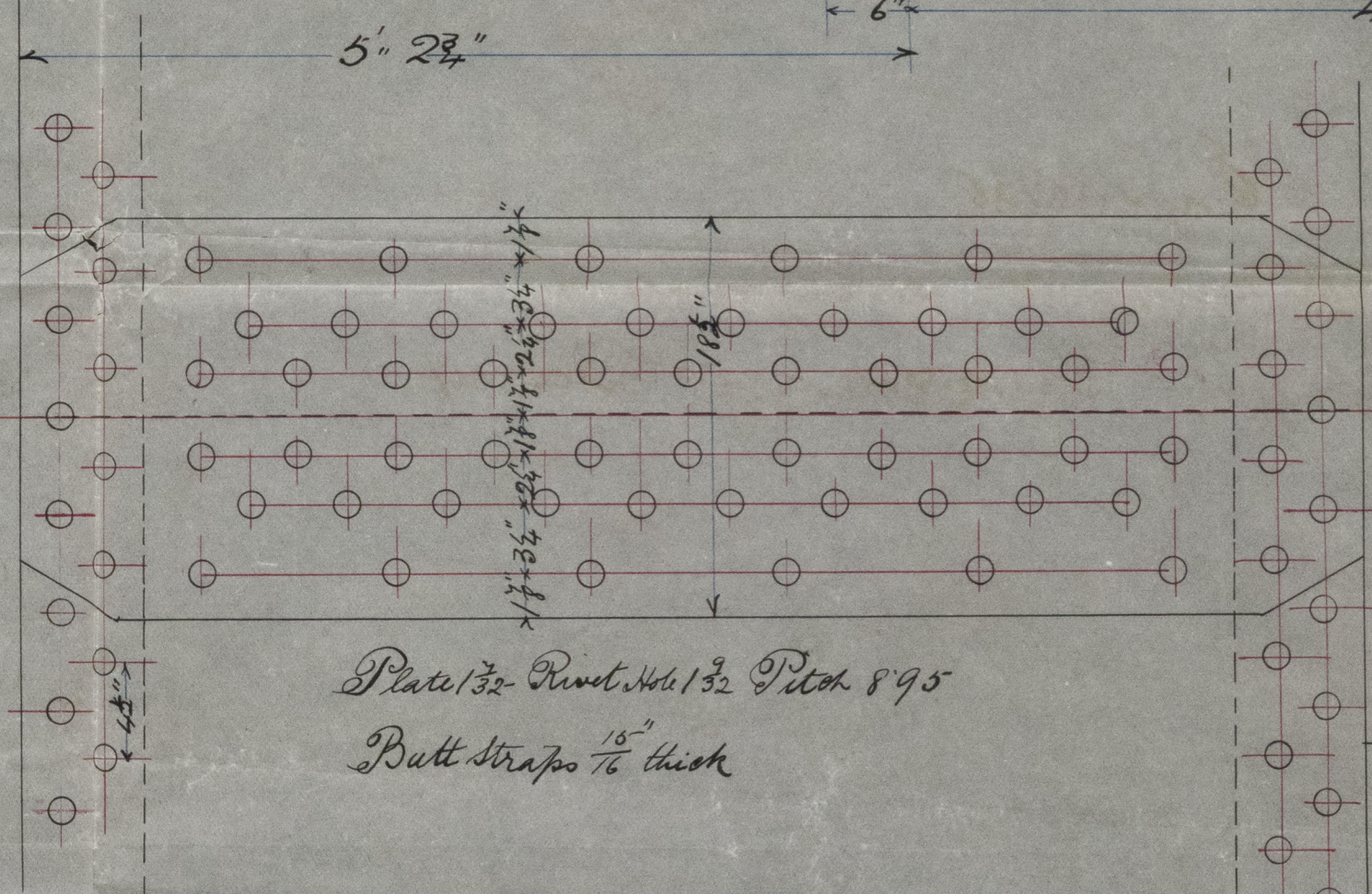
Dec. 12/1/88

S.S. "Lord Londonderry" Glasgow Report No 894/4

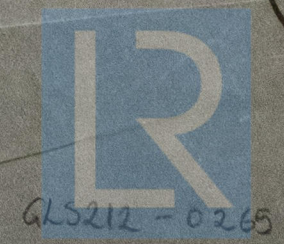


234 tubes 3/4 ext diam 7' 4" between plates
All holes drilled. Shell drilled in place

Engo No 136
Boilers Nos 379-80 - Working from 1666
Scale 1" = 1 foot - Dwg No 3360 - 25th Dec 1887



Comb Cham Backstays 1 1/2 diam milled on both ends & screwed into plates
Those marked x 1 1/2 diam



Register Foundation
GL5212-0265

8944

lls

"Lora Londonderry"

M 13

711611

GLS212 - 0265

GLS 8976



© 2021

Lloyd's Register
Foundation



CP2515 - 0502

26
8