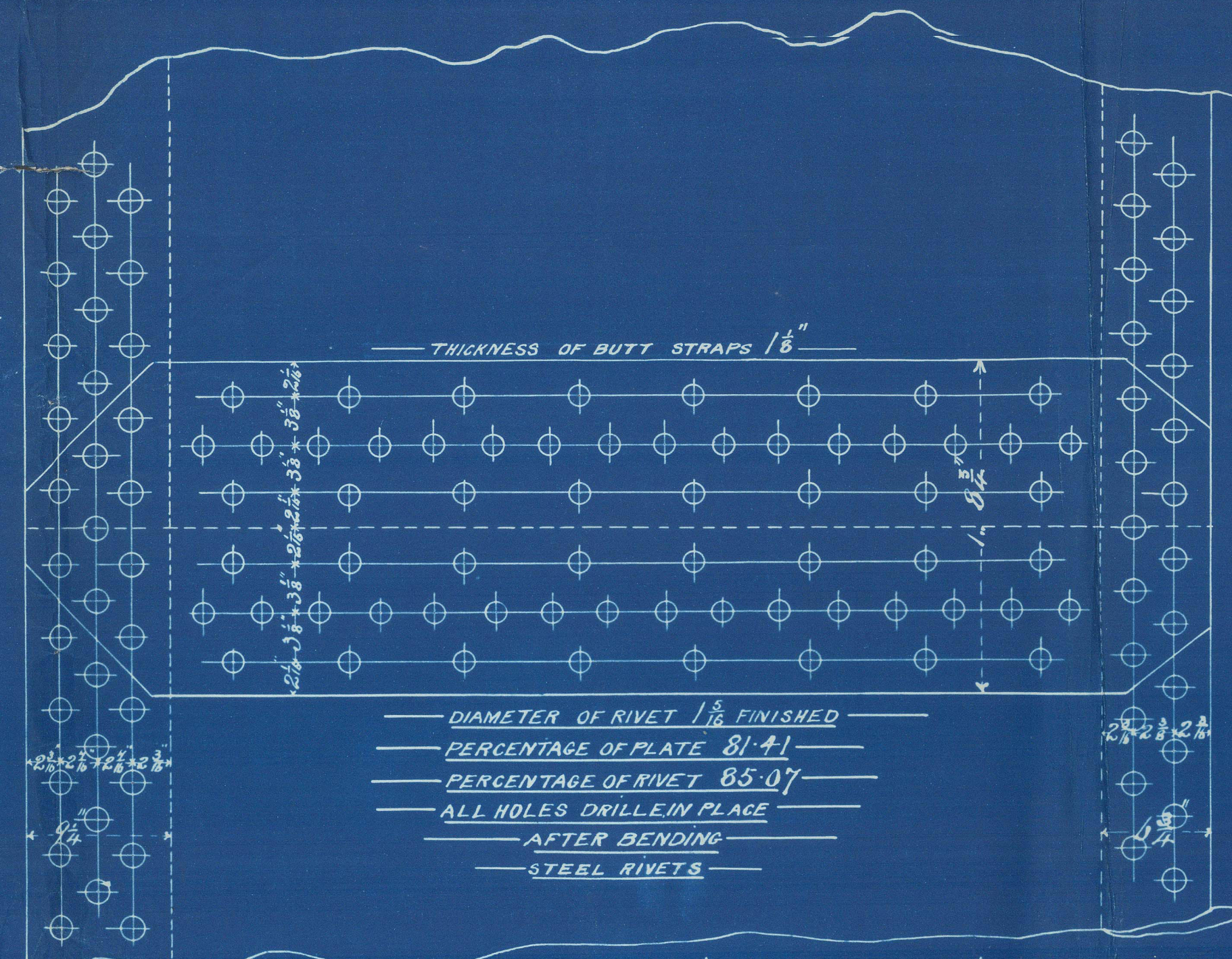
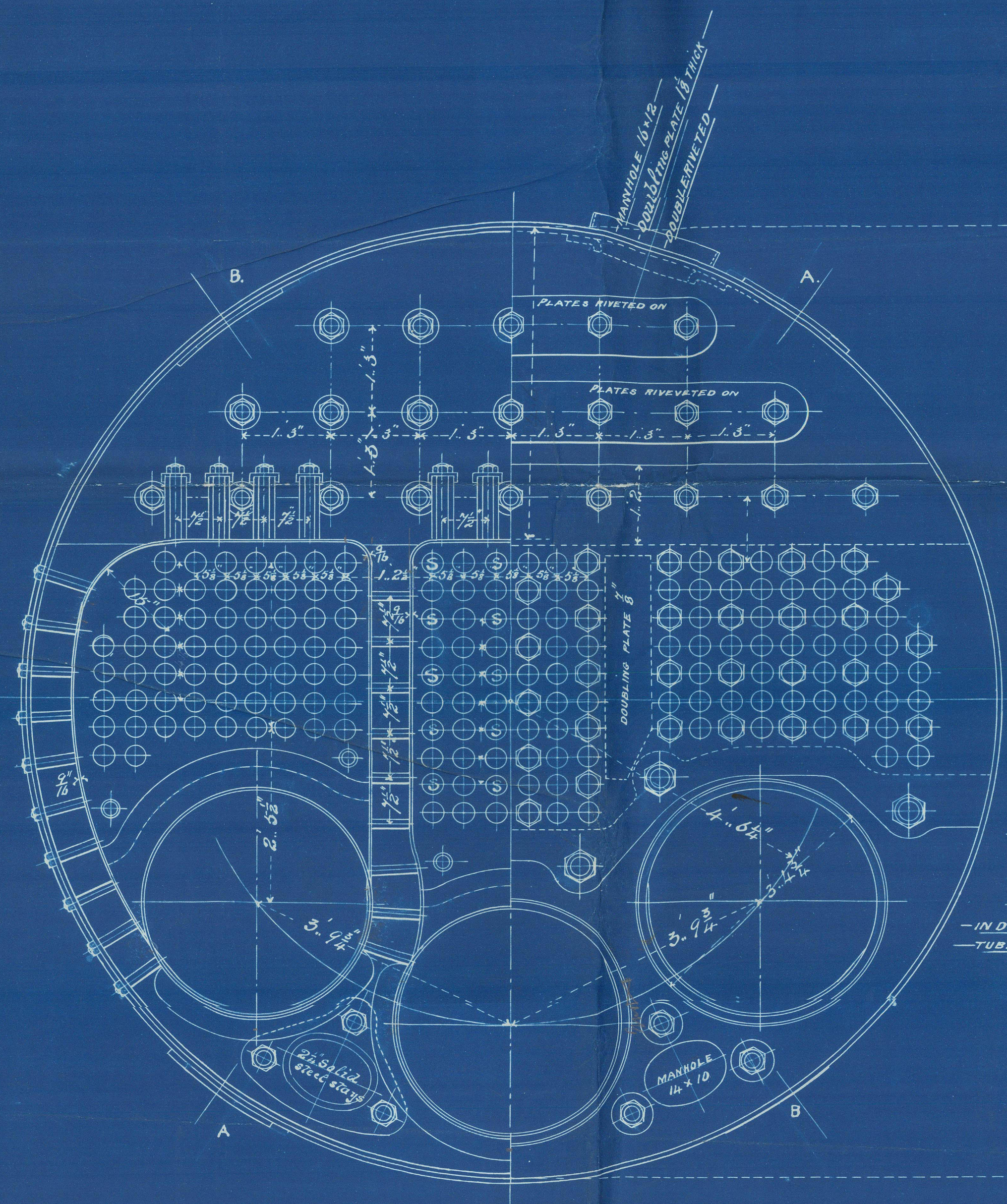


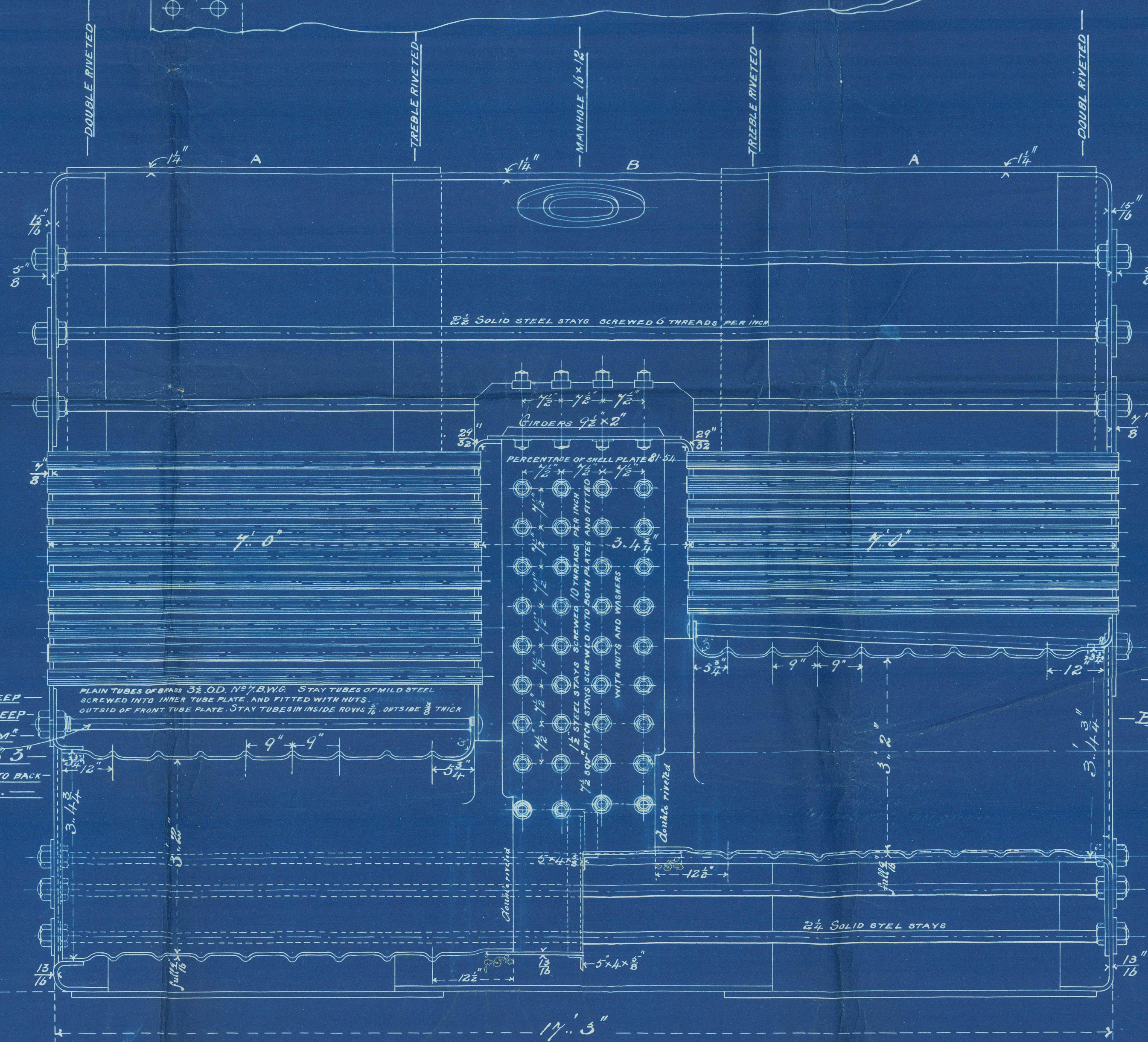
DIAMETER OF RIVET  $1\frac{1}{8}$ " FINISHED  
 112 RIVETS IN THE CIRCUMFERENCE  
 PERCENTAGE OF PLATE 68.3  
 PERCENTAGE OF RIVET 69.8  
 PITCH 4.54  
 ALL HOLES DRILLED IN PLACE  
 AFTER BENDING  
 STEEL RIVETS



DIAMETER OF RIVET  $1\frac{1}{8}$ " FINISHED  
 128 RIVETS IN THE CIRCUMFERENCE  
 PERCENTAGE OF PLATE 61.5  
 PERCENTAGE OF RIVET 53  
 PITCH 3.97  
 ALL HOLES DRILLED IN PLACE  
 AFTER BENDING  
 STEEL RIVETS



NUTS ON INSIDE 1" DEEP  
 NUTS ON OUTSIDE 2" DEEP  
 IRON STAYS  $2\frac{1}{4}$ " DIAM.  
 BOTH ENDS STAYED TO 5"  
 IN DIAM. TO BE SCREWED INTO BACK  
 TUBE PLATE AND RIVETED



TO BE FITTED  
 WITH  
 BROWN'S PATENT RIBBED  
 AND GROOVED FURNACES

Number of plain tubes	248	Heating surface of tubes
Number of stay tubes	116	Heating surface of furnaces
Total number of tubes	364	Heating surface of fireboxes
Length of tubes	4' 2"	Heating surface of inner tube plate
		Total heating surface

2 of 2

## DOUBLE ENDED STEEL BOILER

N<sup>o</sup> 255-6

WORKING PRESSURE 160 LBS PER SQ INCH

LONDON & CLASCOV.  
 ENGINEERING & IRON SHIP BUILDING CO.  
 (LIMITED)  
 CLASCOV & COVAN



S. S. Laiko Mann<sup>21</sup>

"Kobe Mann  
gls. 8764

2910 tons

3066

3660

17 hds

© 2021



Lloyd's Register  
Foundation

GLS209-0251