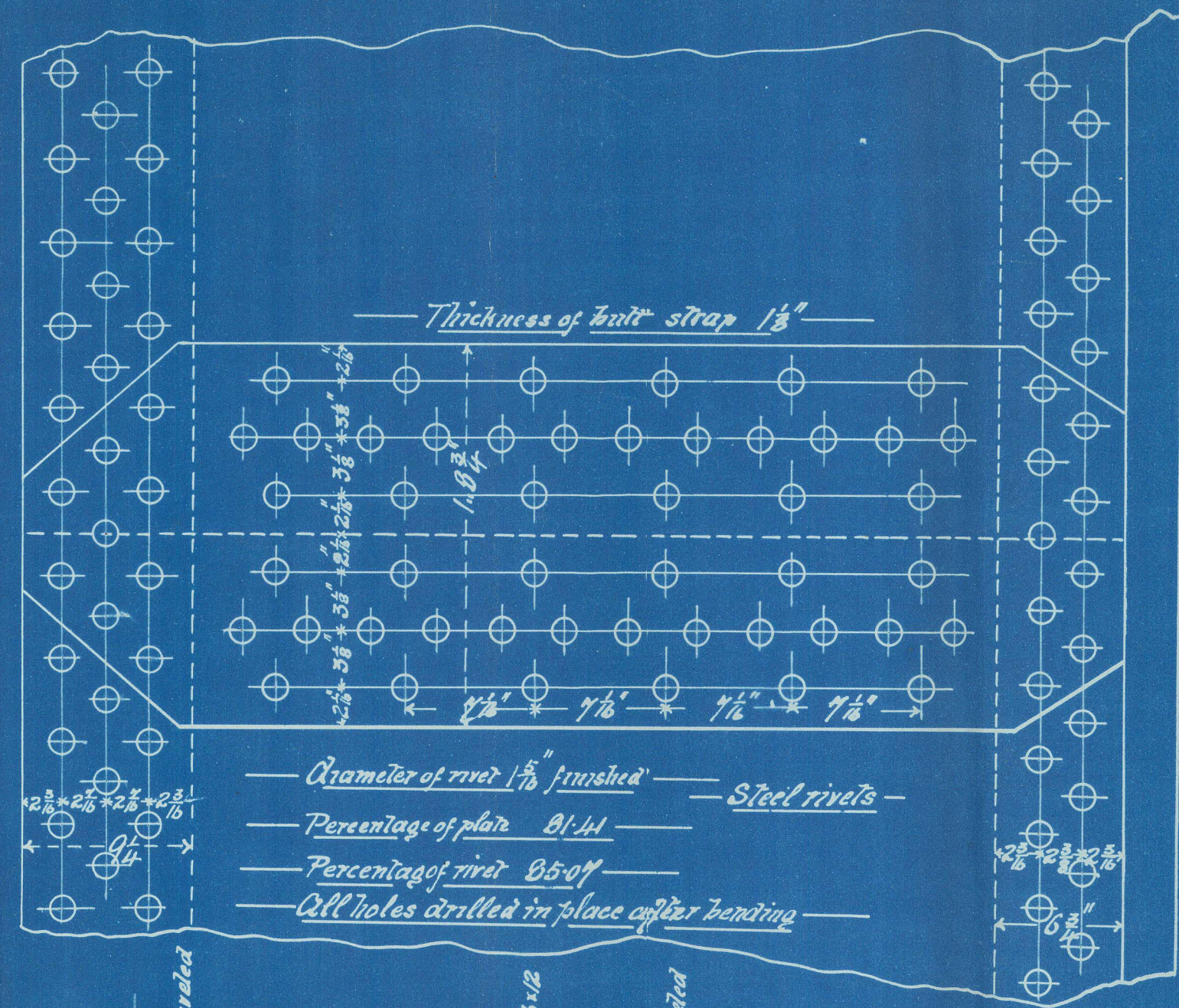
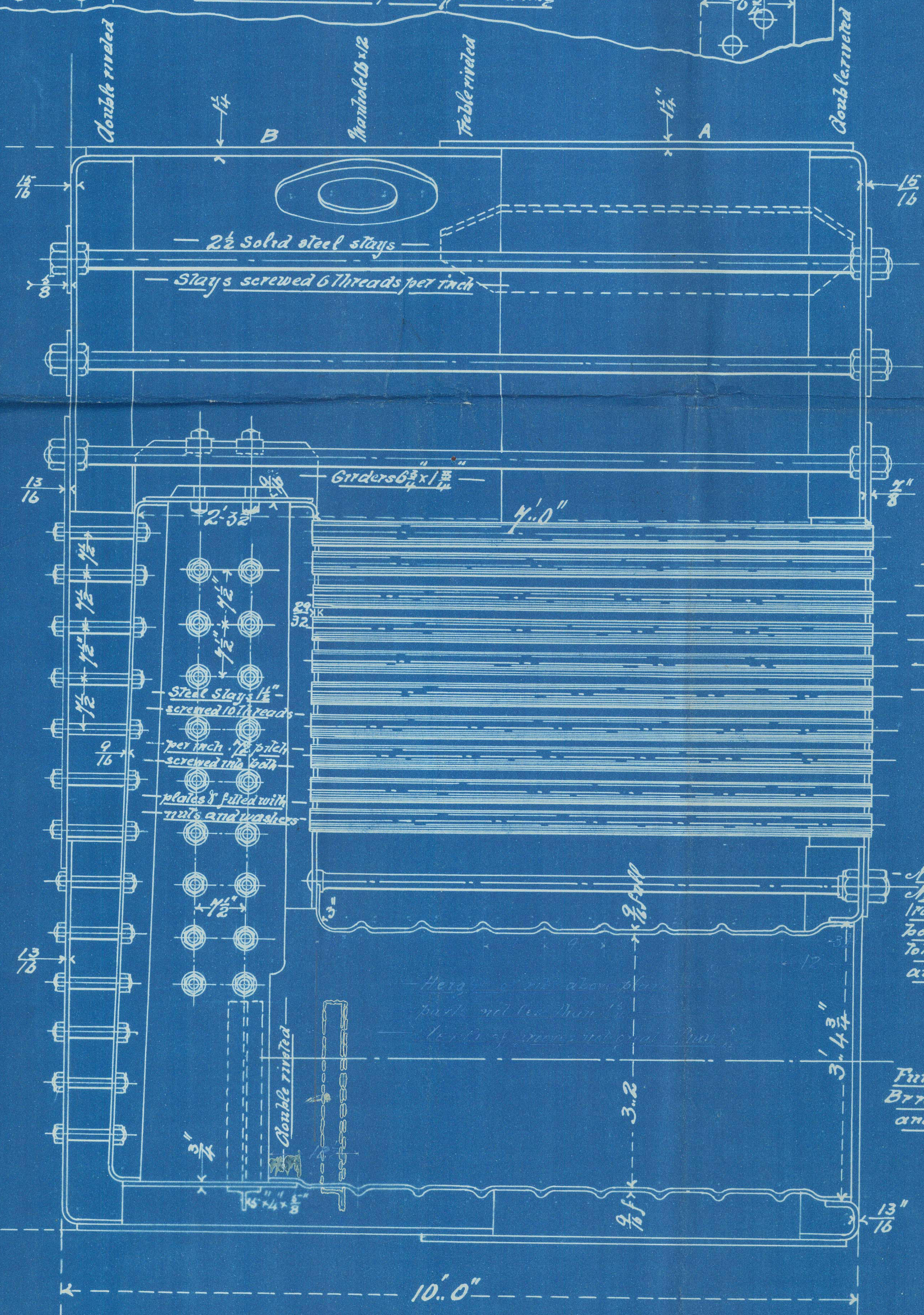


Channel of river 175 fathoms — Steel rivets —  
112 Rivets in the circumference —  
Percentage of plate 89.3 —  
Percentage of rivets 888 —  
Pitch 4.5 ft. —  
All holes drilled in place after bolting —



— Diameter of rivet 1/8" finished — Steel Rivets —  
— Percentage of plate 61.3 —  
— Percentage of rivet 53 —  
— Pitch 3.91 —  
— 128 rivets in the circumference —  
— All holes drilled in place after bending —



Tubes 3 1/2" O.D.  
Plain tubes of brass No. 4 B.W.G.  
Stay tubes of mild steel screwed  
into inner tube plate and fitted with  
nuts outside of front tube plate  
Stay tubes in outside rows 3/4" thick  
Stay tubes in inside rows 1/2" thick

Nut on inside 1" deep  
Nut on outside 2" deep  
For stays 2 1/4 diam.  
Both ends stayed to 5" in diam.  
Top screwed into back in c/plate  
and riveted over

Furnaces to be —  
Brown's patent ribbed —  
and grooved furnaces —

WORKING PRESSURE 160 LBS. PER. SQ<sup>IN</sup>. INCH

ENGINEERING & SHIP BUILDING CO  
(LIMITED)