



*Dr: 2 Sls.  
10/7/84*

*No 293. H. + 54307*

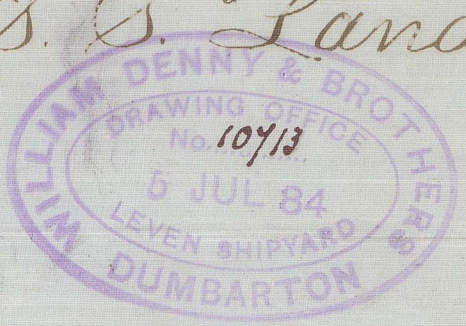
**MIDSHIP SECTION  
S. S. 340' x 42' x 29'**

TO CLASS 100 A AT LLOYDS, THREE DECKED

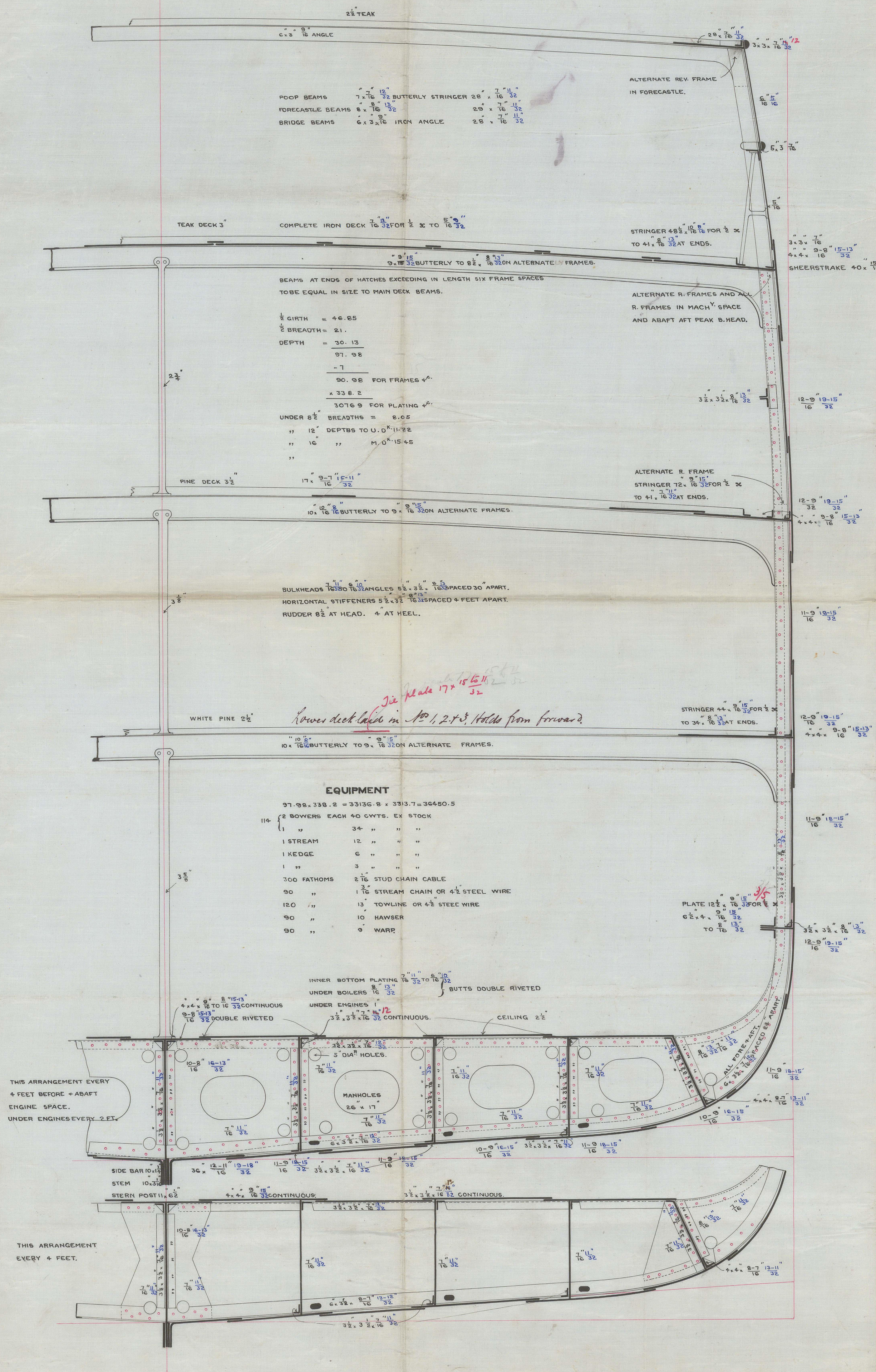
SCALE  $\frac{1}{2}$  = 1 FOOT.

STEEL SCANTLINGS IN BLUE.

*S. S. "Zoodiana" Glasgow Report No. 6894.  
S. S. "Talpoora" do " 6944.  
S. S. "Lawada" do " 6981.  
S. S. "Landaura" do " 4493.*



J.C.



**BUTTS OF DECK PLATING DOUBLE RIVETED** FOR  $\frac{1}{2}$  INCH  
ALL SHELL BUTTSTRAPS  $\frac{1}{8}$  INCH THICKER THAN THE PLATES THEY  
CONNECT AND TREBLE RIVETED FOR  $\frac{1}{2}$  LENGTH AMIDSHIPS.  
BOSS PLATES AND PLATE ABOVE AND BELOW TO BE  $\frac{1}{8}$   
THICKER THAN THE MIDSHIP PLATING AND THEIR  
BUTTSTRAPS EXTENDED FROM FRAME TO FRAME.  
BUTTSTRAPS OF SHEERSTRAKE, UPPER + MIDDLE DECK STRINGER  
PLATES TO BE  $\frac{1}{8}$  INCH THICKER THAN THE PLATES THEY CONNECT AND  
TREBLE RIVETED FOR  $\frac{1}{2}$  LENGTH AMIDSHIPS.

**NOTES FROM GENERAL ORDER BOOK**  
IF BUILT OF STEEL, BUTTSTRAPS OF SHELL PLATING 20% THICKER THAN  
THE PLATES THEY CONNECT AND TREBLE CHAIN RIVETED FOR  $\frac{1}{2}$  LENGTH IN  
AFTER HODS ENDS TO BE FULL MIDDLE  
THICKNESS AT LEAST, FROM KEEL TO STRAKE IMMEDIATELY ABOVE  
STERN FRAME, TOP PLATES, RIVETS IN FRAMES OF AFTER PEAK  
ATTACHING THEM TO SHELL PLATES ARE TO BE PITCHED ONE INCH  
CLOSER THAN ELSEWHERE. PITCH OF RIVETS IN FRAMES, R. FRAMES,  
AND FLOORS MUST NOT EXCEED 7 DIA. APART.  
ALL BUTTS OF INNER BOTTOM AND LONGITUDINALS TO BE DOUBLE  
CHAIN RIVETED EXCEPTING CENTRAL LONGITUDINAL WHICH IS TO BE  
TREBLE CHAIN RIVETED ON DOUBLE STRAPS. RIVETS IN STERN FRAME TO BE PITCHED  
ONE  $\frac{1}{2}$  INCH CLOSER THAN REQUIRED BY LLOYDS.

*15/8  
9/7/84*

GLS206-0015