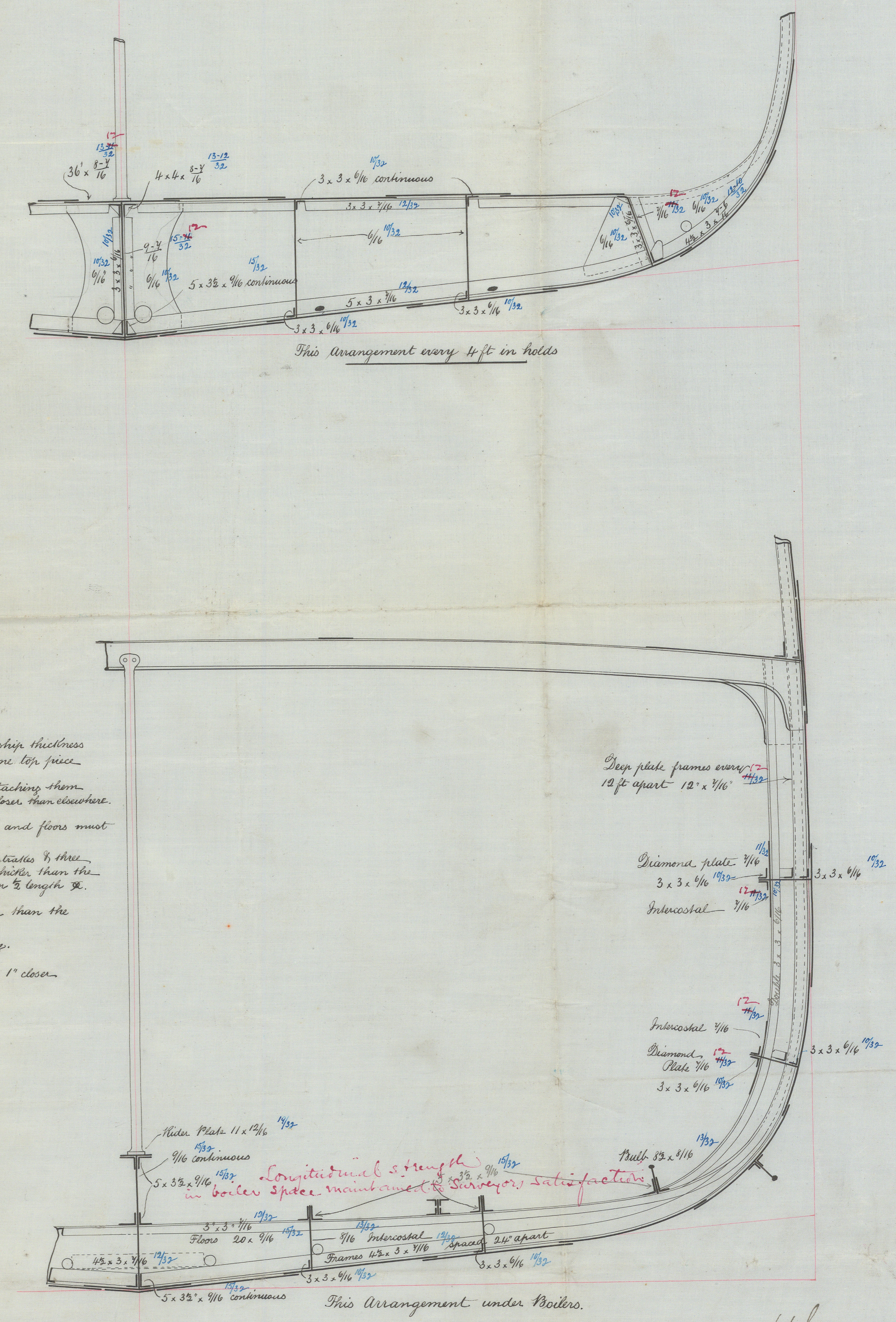


Ltr. to Sls.  
 4/12/84.  
12.2.85  
 27.2.85

No. 505.  
 Midship Section of  
 Proposed S.S. 250' x 36' x 24' mid-  
 To class 100 A1 Spar decked at Lloyd's.  
 Scale 1/8" = 1 foot  
 Steel scantlings in Blue

S. S. Barcoo "Glasgow Report No. 7142. —

Sister vessel to S.S. "Maroon" R: 221 in Register Book except that this vessel has cellular double bottom in fore & after hold & under engines, while the "Maroon" had ordinary floors all fore & aft.



A circular purple ink stamp. The outer ring contains the text "WILLIAM DENNY &amp; BROTHERS" at the top and "DUMBARTON" at the bottom. The inner circle contains the text "DRAWING OFFICE" at the top, "No. 1148H" in the center, "1 DEC 84" below that, and "LEVEN SHIPYARD" at the bottom.