

Str. & Gen. 24/1/84.

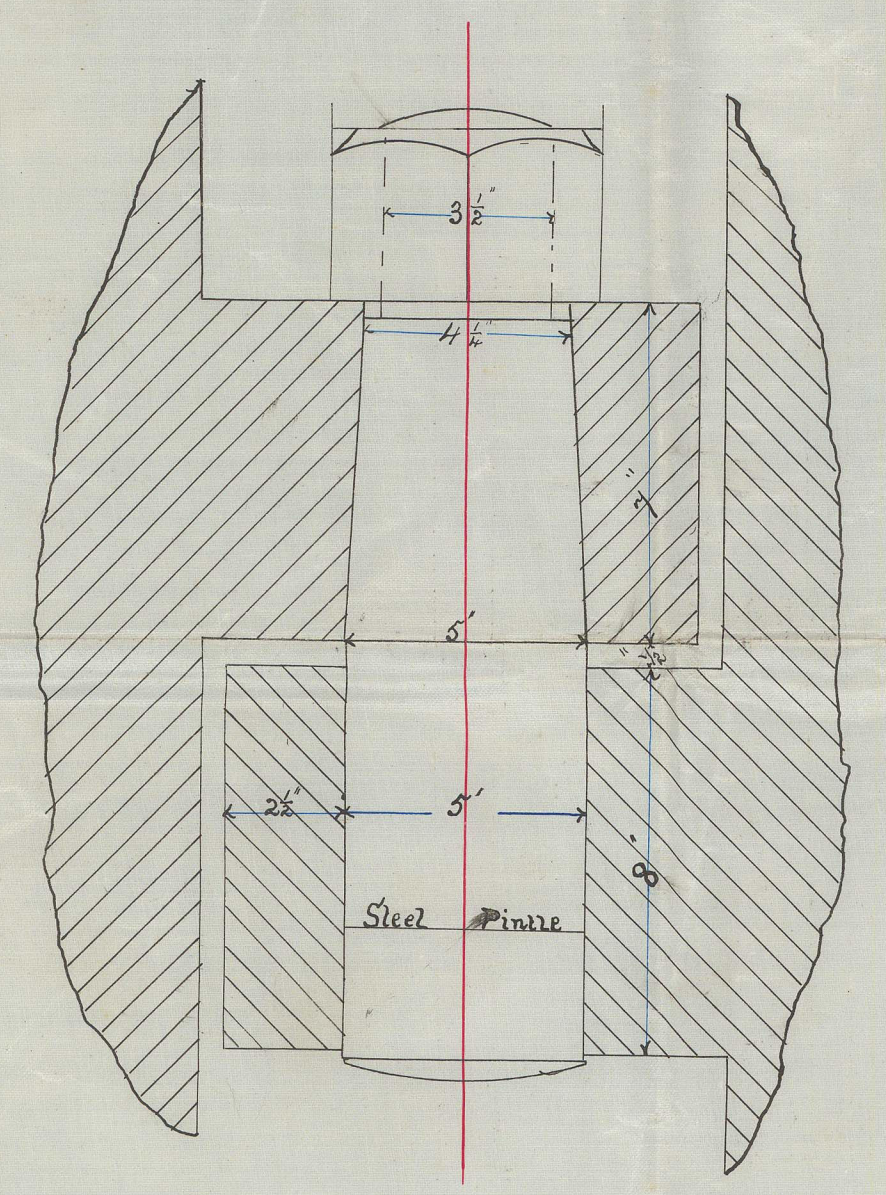
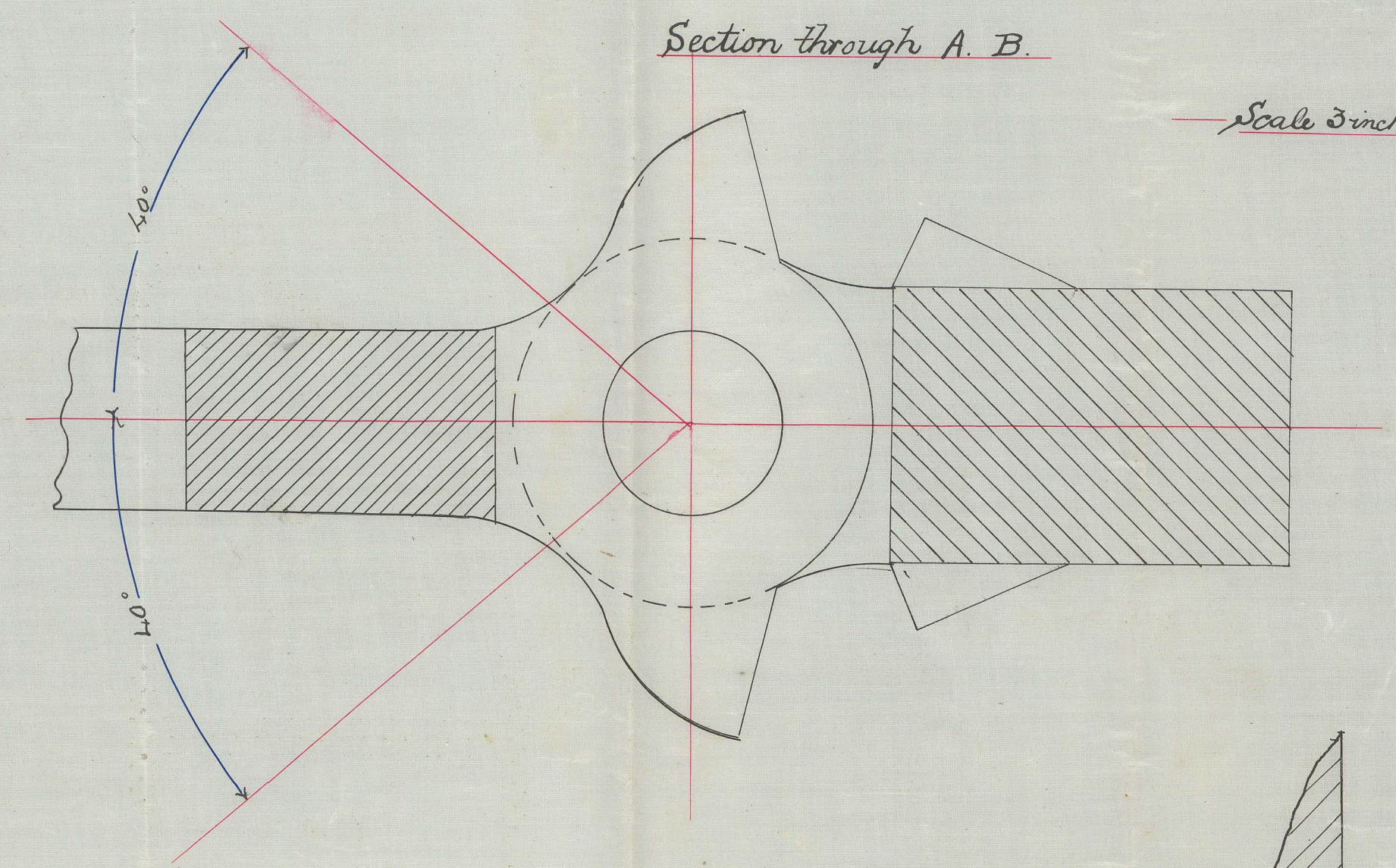
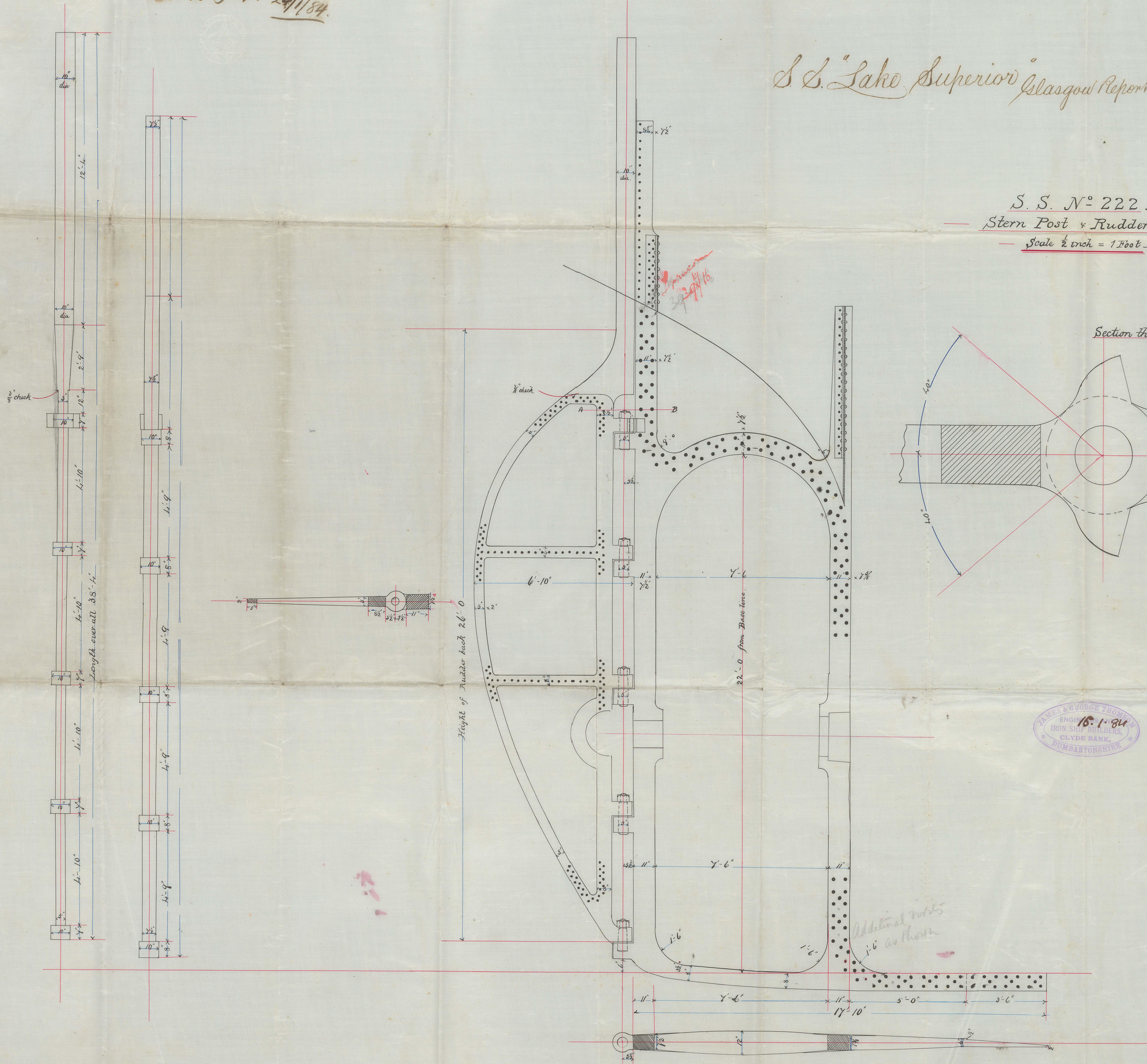
S.S. "Lake Superior" Glasgow Report N^o 6905.

S.S. N^o 222.

Stern Post & Rudder frame

Scale $\frac{1}{2}$ inch = 1 Foot.

Forging of best hammered Scrap Iron.



JAMES & GEORGE THOMSON
ENGINEERS
IRON SHEDS, DUNDEE
CLYDE BANK,
DUMFRIES & GALLOWAY

18/11/84
24/1/84