

Midship Section

Steel Screw Steamer for Cable Purposes.

to class 100A. Among Deck. Special Survey

Builder's      Dimensions

Length (between perpendiculars)	230' 0"
Breadth (moulded)	32' 0"
Depth (do.) to main Deck	17' 7"
Do. (do.) to Aftmost Deck	24' 10"

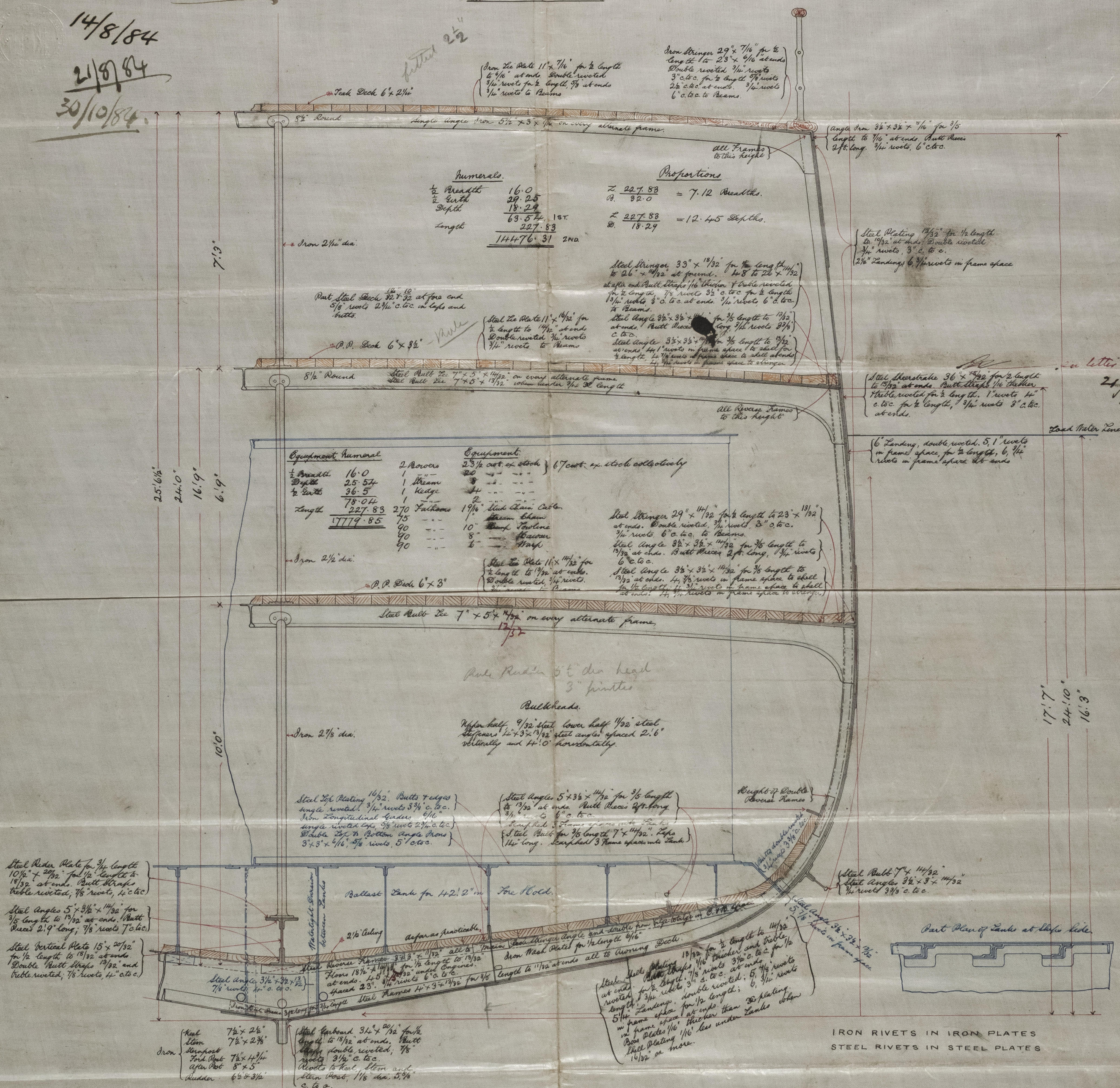
Scale  $\frac{1}{2}'' = 1$  Foot.

Wm. H. Kaysier & Son  
 Lk. L. Ls.  
 7th Aug. 1884

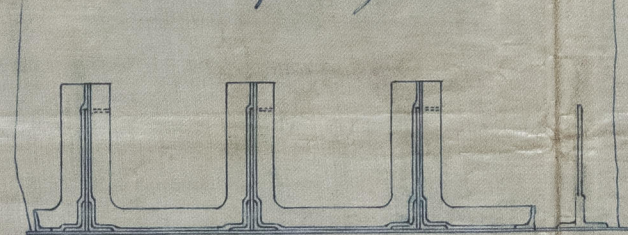
14/8/84

21/8784

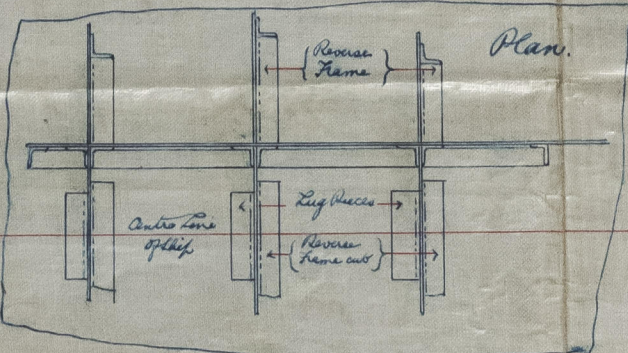
30/10/84



Elevation of Watertight Division



Plan



J. L.  
Lbs. 13/8/84

13M  
14/8/81