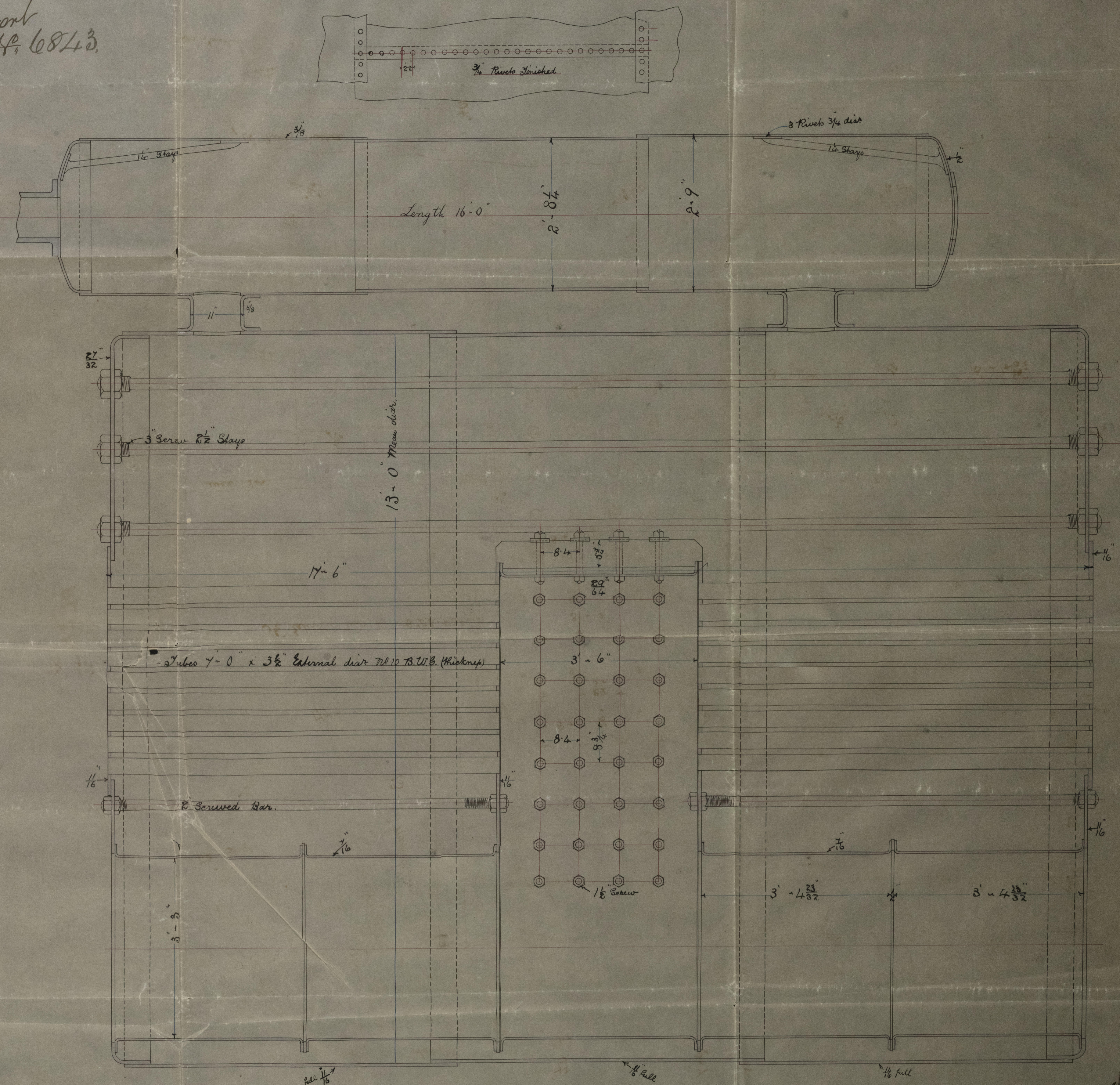
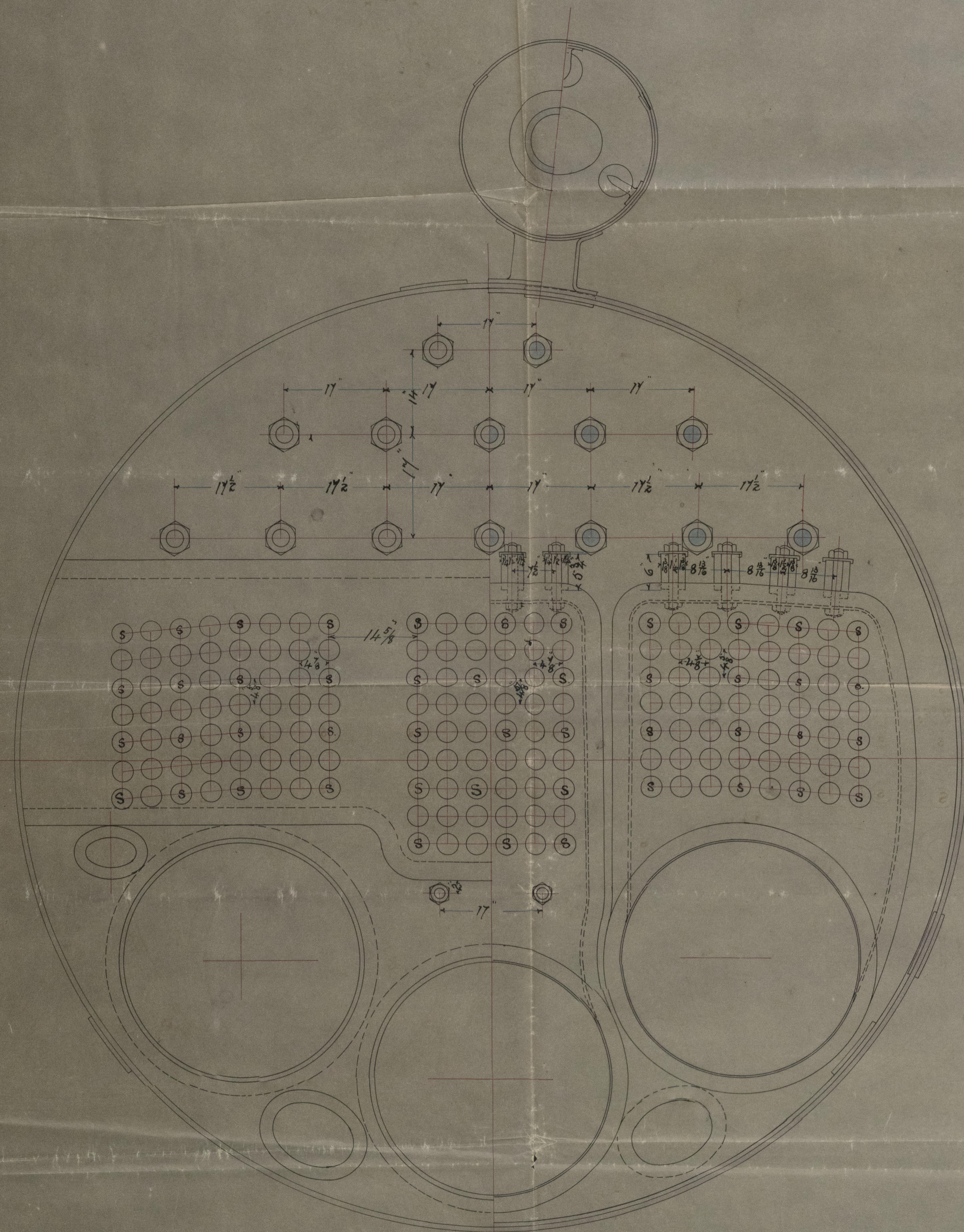


S.S. "Tokio Maru"
Glasgow Report
No. 6843.

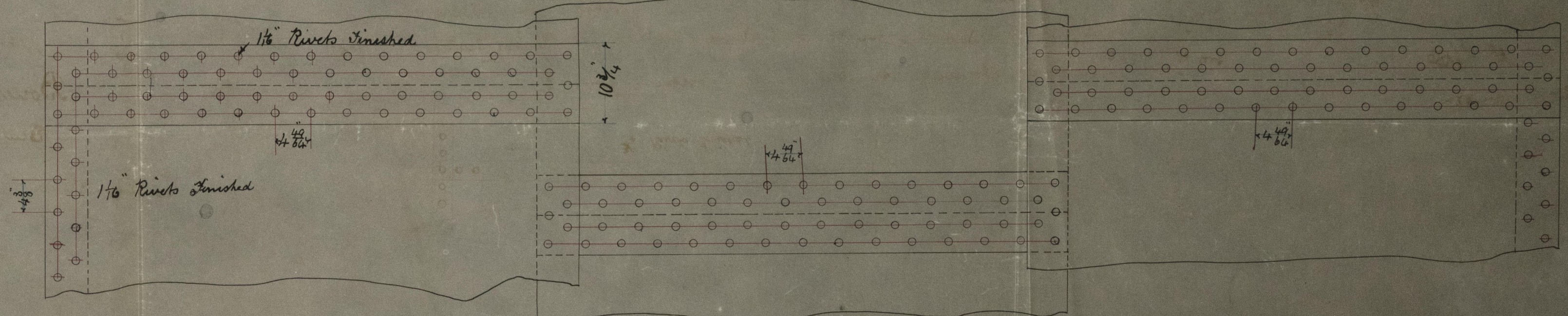
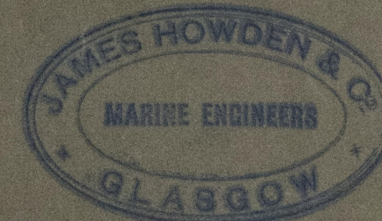


This tracing
altered from original

Boilers No. 336-7 Eng. No. 146

Scale 1"=1' - Eng. No. 5672-20th March 1906.

94 Stay Tubes (nom) 7'-0" x 3 1/2" total 338 in each Boiler
338 Plain Tubes 7'-0" x 3 1/2" External diam in each Boiler (Boats)
Working Pressure 80 lbs per sq. Inch



May 4/84

To Mr
Cassan Shepard
D. D.
Oria Lane