

1359

10 SEP 85
LONDON

22 JAN 84
LONDON

18 MAR 84
LONDON

Dr. S. G. S.

139/83

20/1/84

20/3/84

7/4/84

Class 100A

Runway Deck

MIDSHIP SECTION

SSN° 26

Scale 1/2" = 1 foot.

S.S. "Tokio Maru" Glasgow Report No. 6843.

Myer Shanks & Bell

Yoker.

7th Sept. 1883

Principal Dimensions

Length between perps 285'-0"
Breadth Extreme 35'-0"
Depth Moulded to Main Deck 21'-9"
" " " " 29'-0"

Half Breadth 17'-4 1/4"
Birth 35'-9 1/4"
Depth 22'-6"

12.62 Depths 17'-8" x 284 = 21489 Plating Numerals
8.14 Breadths 17'-8" x 284 = 21489

Equipment Numerals = 2560x

2 Bower Anchors 32 cwt each ex stock

1 " 2 1/4 " ex stock

1 Stream " 10 1/2 " "

1 Hedge " 5 1/4 " "

1 " 2 1/2 " "

240 Fathoms 1 1/4 inch Chain Cable

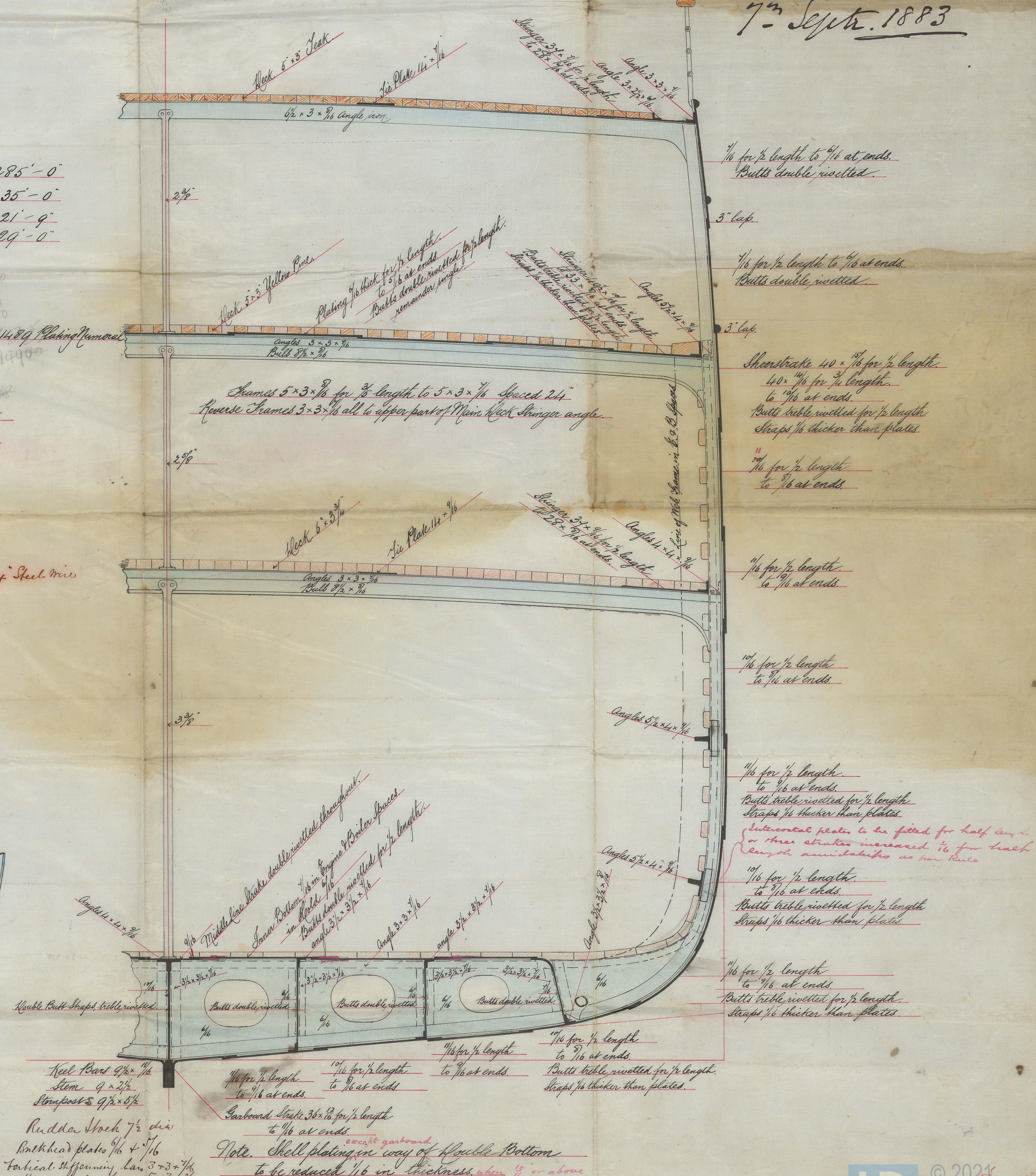
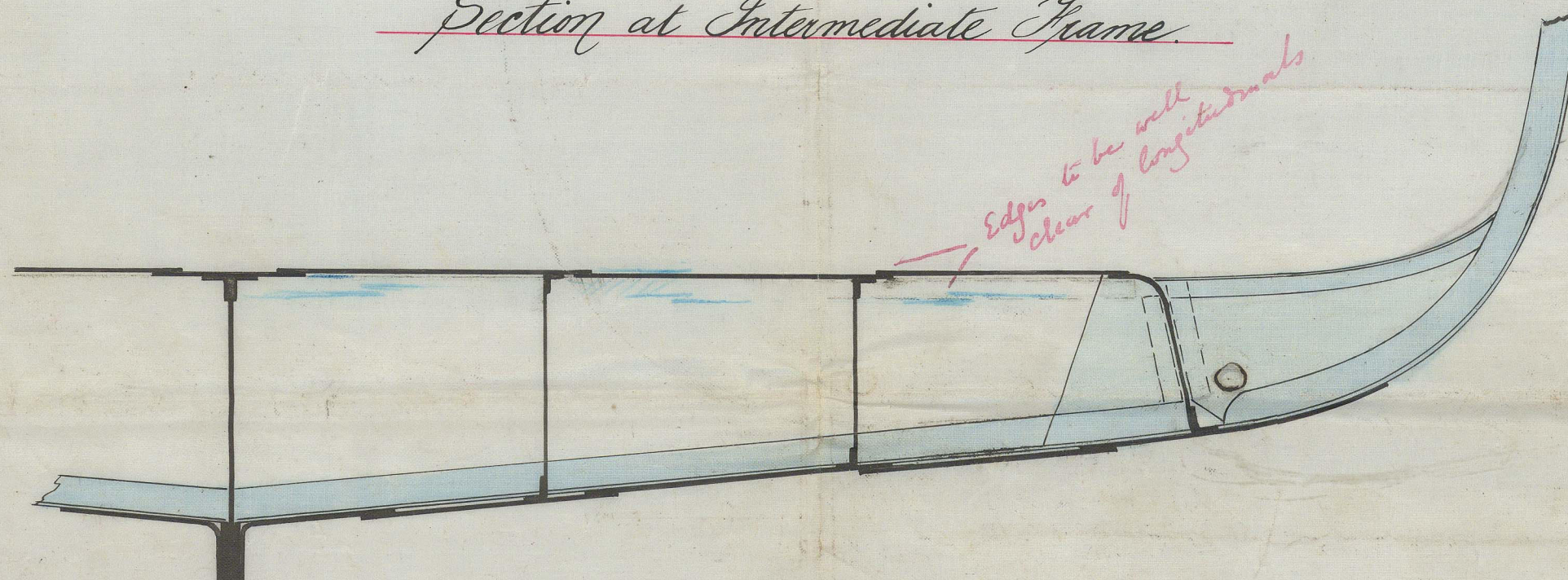
45 " 1 1/4 inch Stream Chain

90 " 12 inch " 90 fathoms 1 1/4 inch Steel Wire

90 " 9 1/2 inch " "

90 " 7 1/2 " "

Section at Intermediate Frame



Keel Bars 9 1/2 x 1 1/2
Stem 9 x 2 1/2
Stimpfosts 9 1/2 x 5 1/2
Rudder Stock 7 1/2 dia
Bulwark plates 1/6 x 5 1/6
Vertical stiffening bars 3 x 3 x 1/6
Horizontal do 5 x 3 x 1/6

Note. Shell plating in way of Double Bottom to be reduced 1/16 in thickness when 1/2" or above