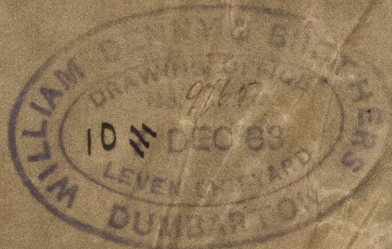


S.S. "Arawa" Glasgow Report No. 6692.

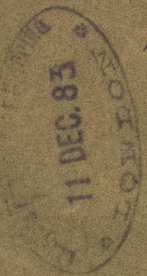
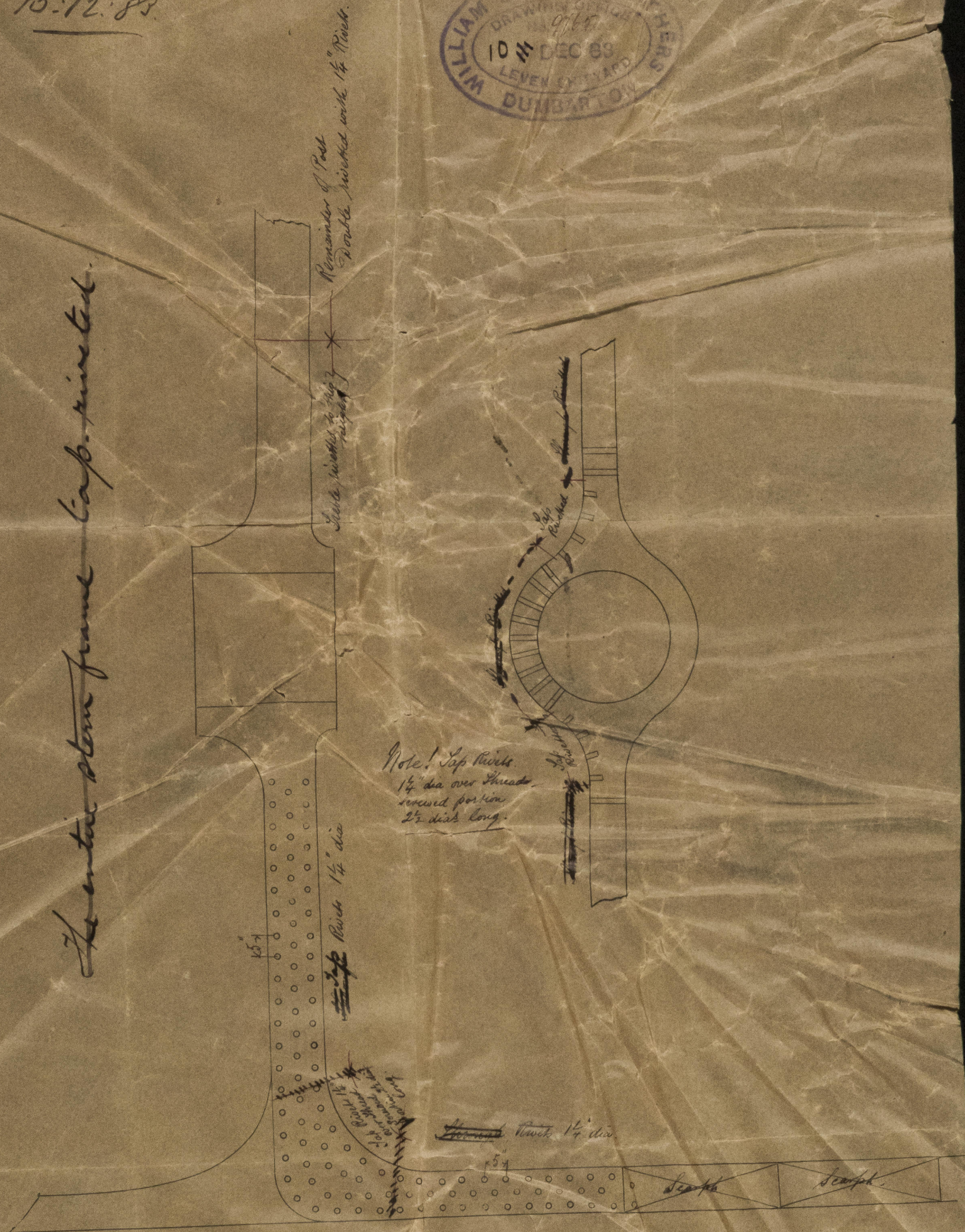
S.S. "Tainui" do " 6803.

Portion of Stern Frame S.S. Nos 282 & 3.
Scale $\frac{1}{2}$ " = 1 Foot.

Lt. S. G. S.
15.12.83.



The entire stern frame cap riveted.



L. S. G. S.
15.12.83

The entire stern frame
riveted.
attest in accordance with
Messrs Denny & Sons request.
J. H. [Signature]

GL 2701-0067