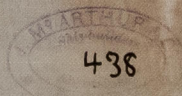
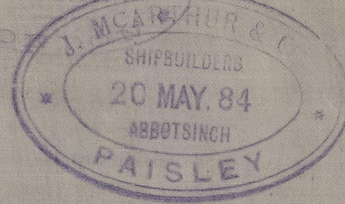
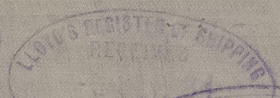
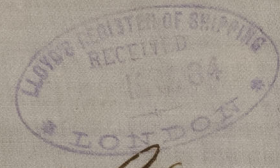


Lt. to Gls:
 29/5/84.

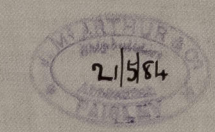


Steel Screw Steamer No. 29.
 Class 100 A.I.
 Scale 1/2" = 1 Foot.

S.S. "Rossgull"

Glasgow Report
 No. 6760.

Length bet. perfs. - 130'-0"
 Breadth - 22'-0"
 Depth - 10'-8 1/2"
 Depth of hold (to ceiling) 10'-0"



Butt Straps of Sheer Strake
 Quarter & Main deck stringer-plates
 and 1 strake at bilge to be 1/16
 thicker than their plates & double
 riveted for 1/2 length.